

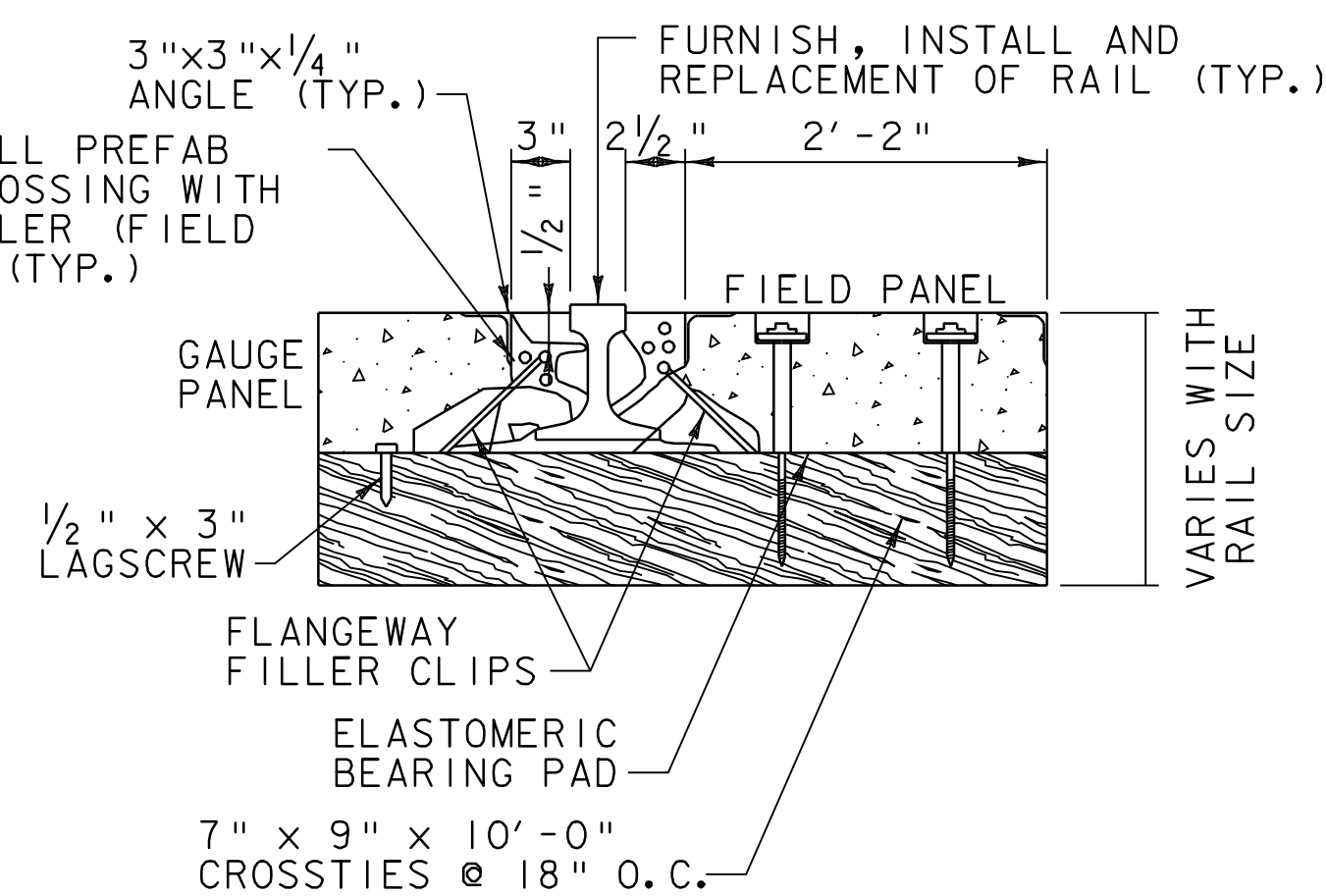
TYPICAL SECTION - CONCRETE GRADE CROSSING

GENERAL NOTES:

- ITEM 900.645 SHALL INCLUDE ALL ITEMS AND MATERIALS SHOWN IN THE ABOVE DETAILS TO CONSTRUCT THE PROPOSED CONCRETE GRADE CROSSING UNLESS OTHERWISE NOTED OR AS DIRECTED BY THE RESIDENT ENGINEER.
- THE CONTRACTOR SHALL INSTALL A GEOTEXTILE UNDER THE RAILROAD BALLAST PER SECTION 649 OF THE 2006 VAOT STANDARD SPECIFICATIONS FOR CONSTRUCTION AS DIRECTED BY THE RESIDENT ENGINEER.
- THE CONTRACTOR SHALL TRANSITION THE PROPOSED ROADWAY TO THE PROPOSED ELEVATION OF THE CONCRETE GRADE CROSSING BY PAVING THE 1" IN 50' TAPER BY PLACING 2 LIFTS OF SUPERPAVE BITUMINOUS CONCRETE PAVEMENT (PG 58-28) TYPE IIIS AS DIRECTED BY THE RESIDENT ENGINEER.
- THE CONTRACTOR SHALL INSTALL A 6" UNDERDRAIN ALONG BOTH SIDES OF THE PROPOSED CONCRETE RAILROAD GRADE CROSSING PER SECTION 605 OF THE 2006 VAOT STANDARD SPECIFICATIONS FOR CONSTRUCTION AND GRADE TO DRAIN TO THE EXISTING DITCHES AS DIRECTED BY THE RESIDENT ENGINEER.
- THE CONTRACTOR SHALL INSTALL ONE 6" GALVANIZED STEEL CONDUIT AS SHOWN ON THE PLANS OR AS DIRECTED BY THE RESIDENT ENGINEER.
- CROSS TIE SPACING UNDER CWR AREA SHALL BE 18" ON CENTER OR AS REQUIRED IN CROSSING PANEL AREA PER MANUFACTURER'S SPECIFICATIONS.
- NEW 7"x9"x10'-0" AND 7"x9"x8'-6" CROSS TIES SHALL BE INSTALLED IN THE CROSSING AREA AS SHOWN ON THE PLANS. CROSS TIES LOCATED WITHIN THE APPROACH AREAS SHALL BE REPLACED AS RECOMMENDED BY THE RAILROAD AND APPROVED BY THE RESIDENT ENGINEER.
- TIE PLATES SHALL BE NEW 14 INCH PLATES MANUFACTURED FOR THE TYPE OF RAIL USED. PLATES SHALL BE INSPECTED AND APPROVED BY THE RAILROAD AND RESIDENT ENGINEER. RAIL FASTENERS SHALL BE EITHER CUT TRACK SPIKES OR PANDROL TYPE CLIPS AND LOCK SPIKES. SPECIFIC RAIL FASTENING SHALL BE RECOMMENDED BY THE RAILROAD AND APPROVED OF BY THE RESIDENT ENGINEER.
- RAIL WEIGHTS SHALL BE DETERMINED BY THE RAILROAD AND APPROVED BY THE RESIDENT ENGINEER. THE MINIMUM RAIL WEIGHT SHALL BE 136 LB. RE.
- THE TYPE AND DESIGN OF COMMERCIAL FLANGEWAY MATERIALS SHALL RECEIVE APPROVAL FROM THE RESIDENT ENGINEER. MANUFACTURER'S SPECIFICATIONS SHALL BE FOLLOWED FOR THE INSTALLATION OF COMMERCIAL FLANGEWAY MATERIALS.
- INSULATED JOINTS WILL BE REQUIRED FOR TYPE "C" TRACK CIRCUITS. THE MAXIMUM STAGER BETWEEN RAIL JOINTS SHALL BE 10 FEET, THE MINIMUM SHALL BE 5 FEET.
- IF EXISTING TRACK IS CONTINUOUS WELDED RAIL, BONDED INSULATED JOINTS SHALL BE NEW AND WELDED AT BOTH ENDS IN ACCORDANCE WITH THE LATEST REVISION OF AREMA SPECIFICATIONS. ALL WELDS SHALL BE GROUND TO CONFORM TO THE SHAPE OF THE RAIL ON GAUGE AND FIELD SIDES AS DIRECTED BY THE RESIDENT ENGINEER.

STANDARD PANEL LENGTH	9'-0"
GAUGE PANEL WIDTH	4'-2 1/2"
FIELD PANEL WIDTH	2'-2 1/4"
HEIGHT DETERMINED BY RAIL SIZE	6" TO 8 1/2"
DIMENSION TOLERANCE	± 1/4"
CROSSTIE CENTERS REQUIRED	1'-6"
CROSSTIE LENGTH REQUIRED	10'-0"
CONCRETE	6000 LBS. PSI. 28 DAYS MIN.
REINFORCEMENT REBAR	AMERICAN GRADE 72
LIFTING EYES	4000 LBS. CAPACITY EACH
MEETS HS20-44 LOADING SPECS.	
WEIGHT	136#
	3831
	1529
WEIGHT (9' SECTION)	6800

ENLARGED SECTION AT RAIL



900.645 SPECIAL PROVISION (RECONSTRUCT RAIL-HIGHWAY CROSSING) (U.S. 7 - AAR DOT #900-613N)		
LIST OF QUANTITIES		
DESCRIPTION	UNIT	QTY.
REMOVAL OF EXISTING TRACK AND GRADE CROSSING	TF	410
NEW TRACK (136 RE CWR W/9-FT TIES) 10 FT	TF	410 140
CONCRETE PANEL GRADE CROSSING SURFACE	TF	270
FACTORY BONDED INSULATED JOINTS (136 RE)	EA	4
APPROACH TIES	EA	50 70
APPROACH ASPHALT SURFACE	TON	100
REINSTALL JOINTED TRACK WITH COMPROMISE JOINTS	TF	150
UNCLASSIFIED EXCAVATION	CY	200
TRENCH EXCAVATION	CY	50
BALLAST BASE COURSE	TON	120
BALLAST SURFACE COURSE	TON	200
UNDERDRAIN	LF	800
CONDUIT 6" CSG PIPE	LF	350

TF = TRACK FEET

NOT TO SCALE

CONCRETE GRADE CROSSING DETAILS #1

PROJECT NAME: MANCHESTER - DORSET
PROJECT NUMBER: NH 2608(1)S

FILE NAME: p06b040.dgn PLOT DATE: 07-JUN-2010 11:00
PROJECT LEADER: D.E.G. DRAWN BY: C.A.K.
DESIGNED BY: M.J.M. CHECKED BY: D.W.E.
IPARM FILE: p06b040rr2.i SHEET 75 OF 78