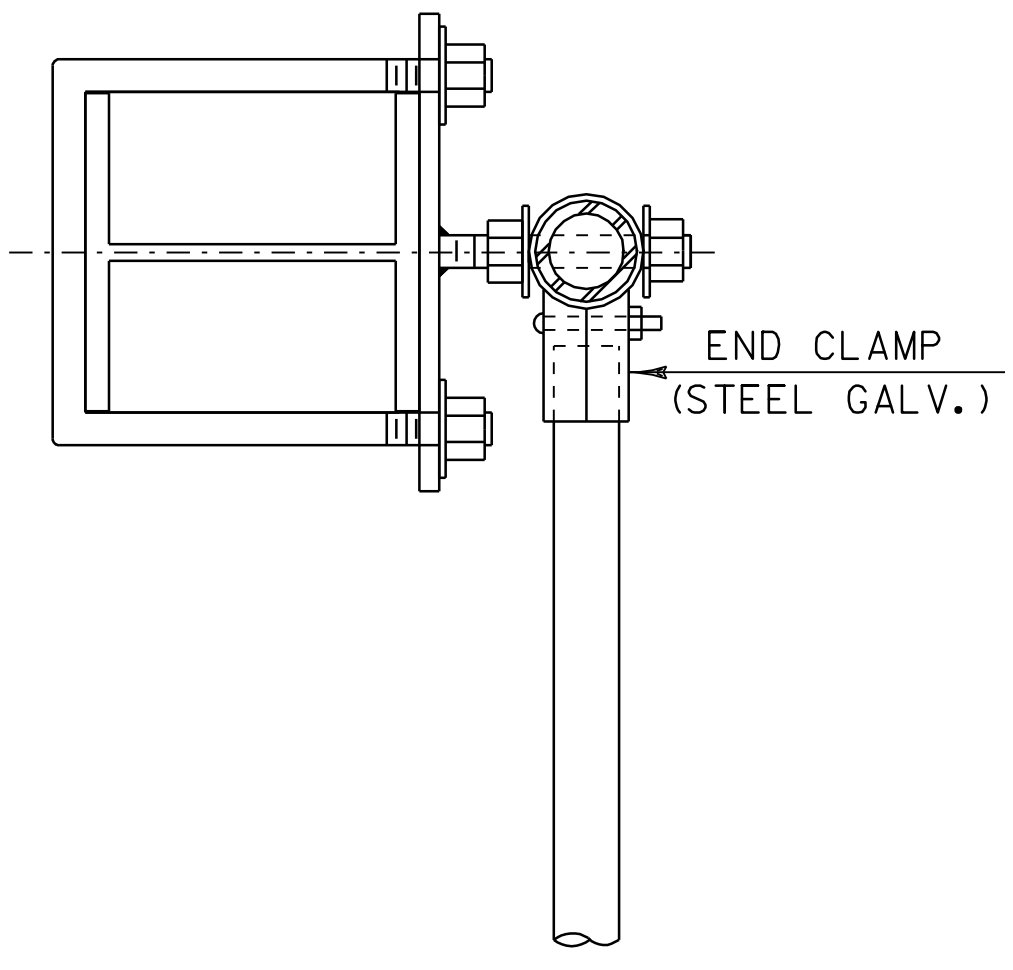


SECTION A-A



PLAN VIEW AT END POST

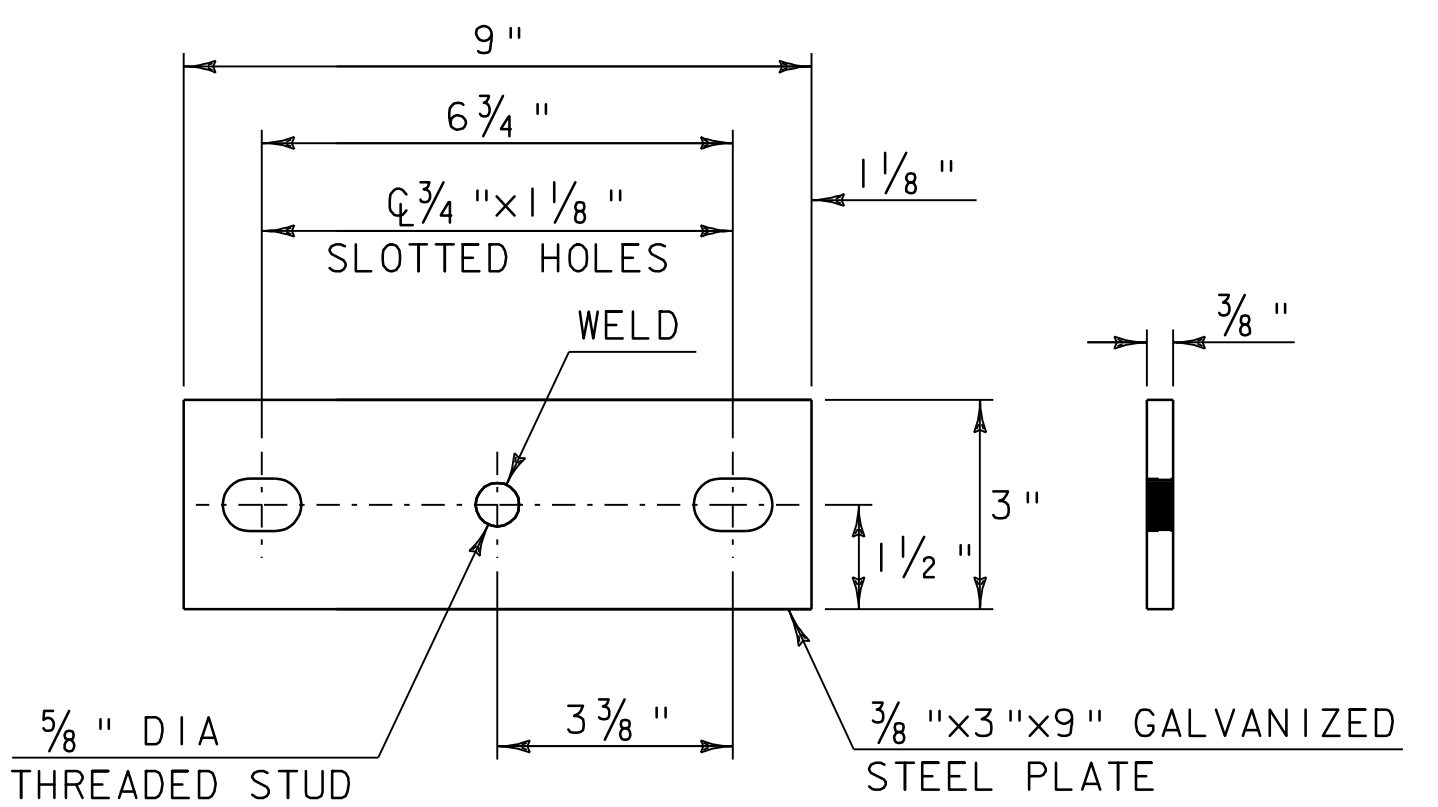
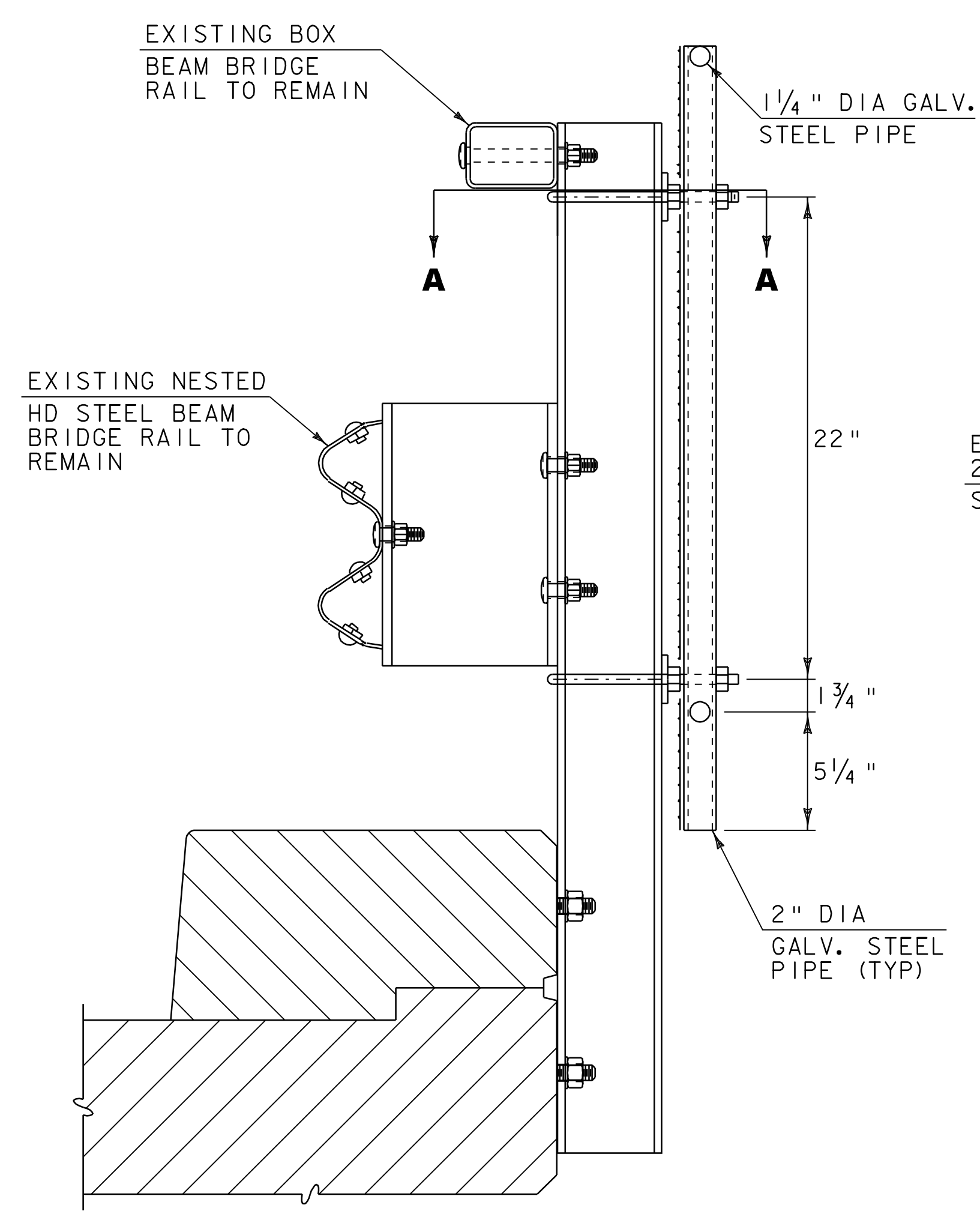
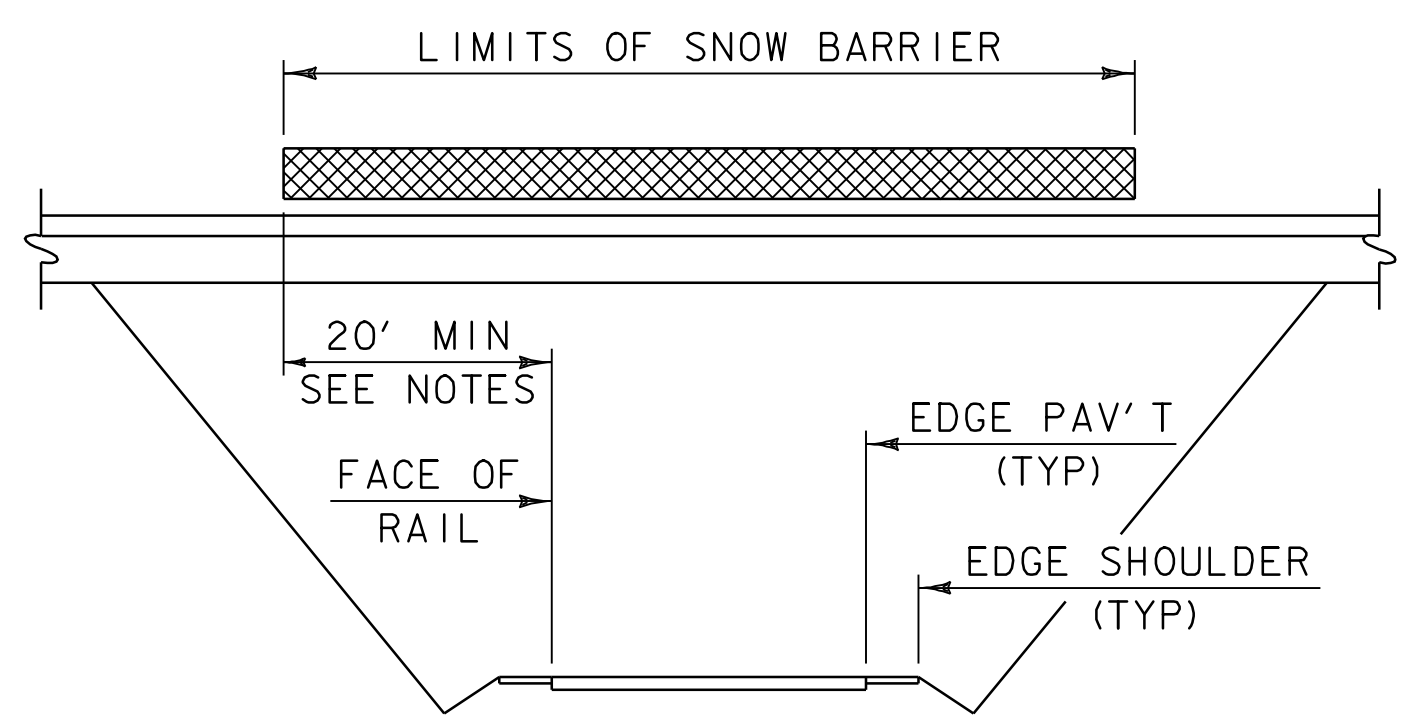


PLATE DETAILS

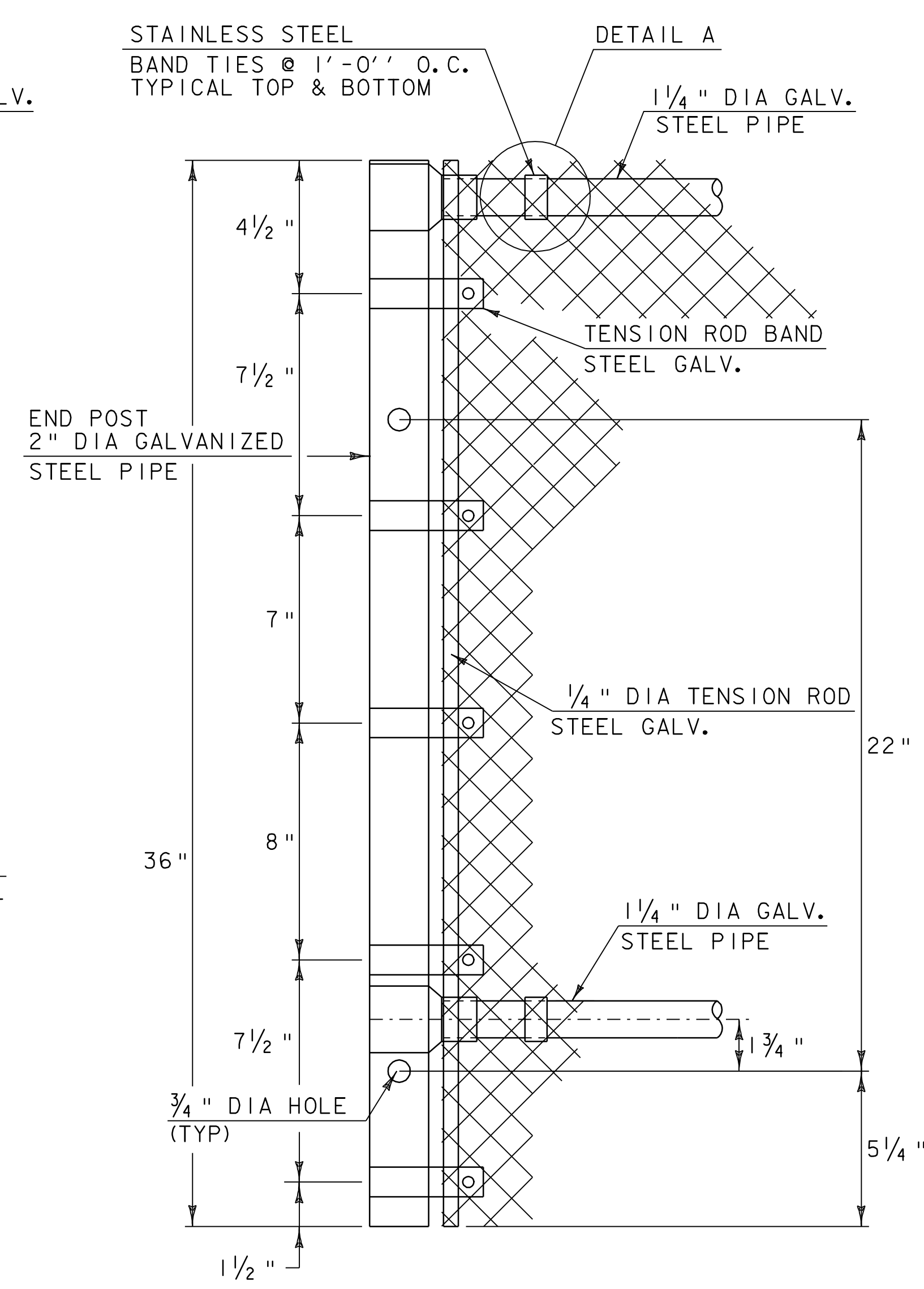


TYPICAL SECTION

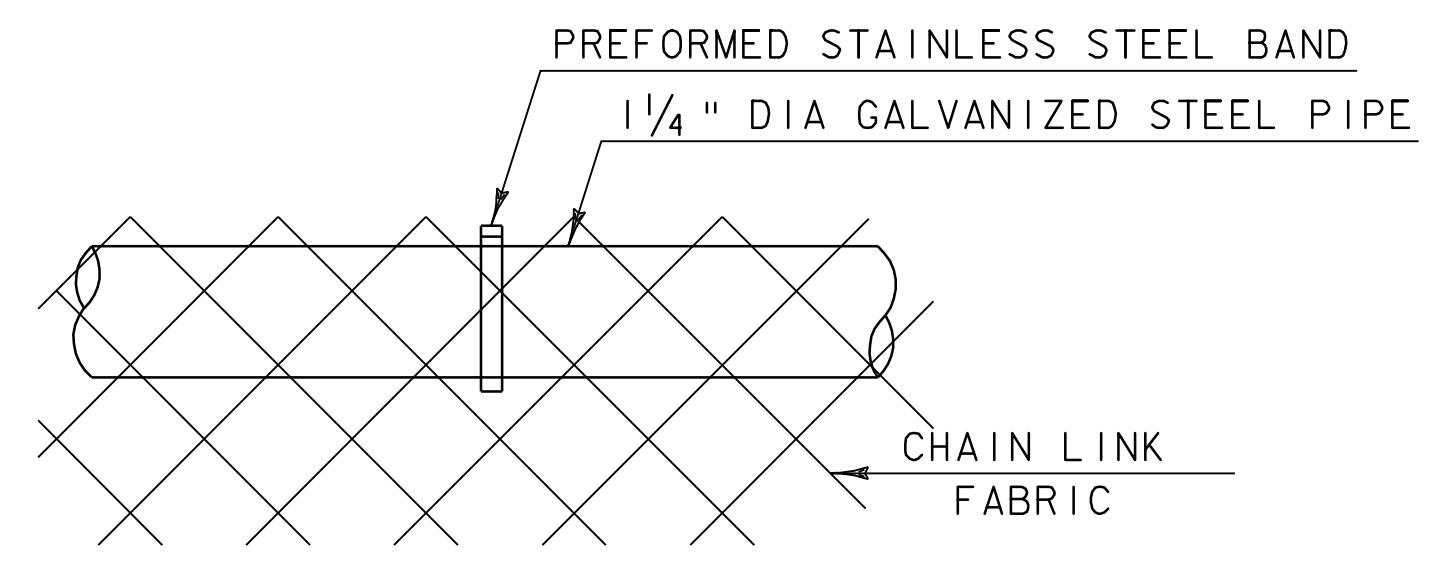


SCHEMATIC SNOW BARRIER LIMITS

BR29 MANCHESTER MM 6.894 = STA 364+00.32



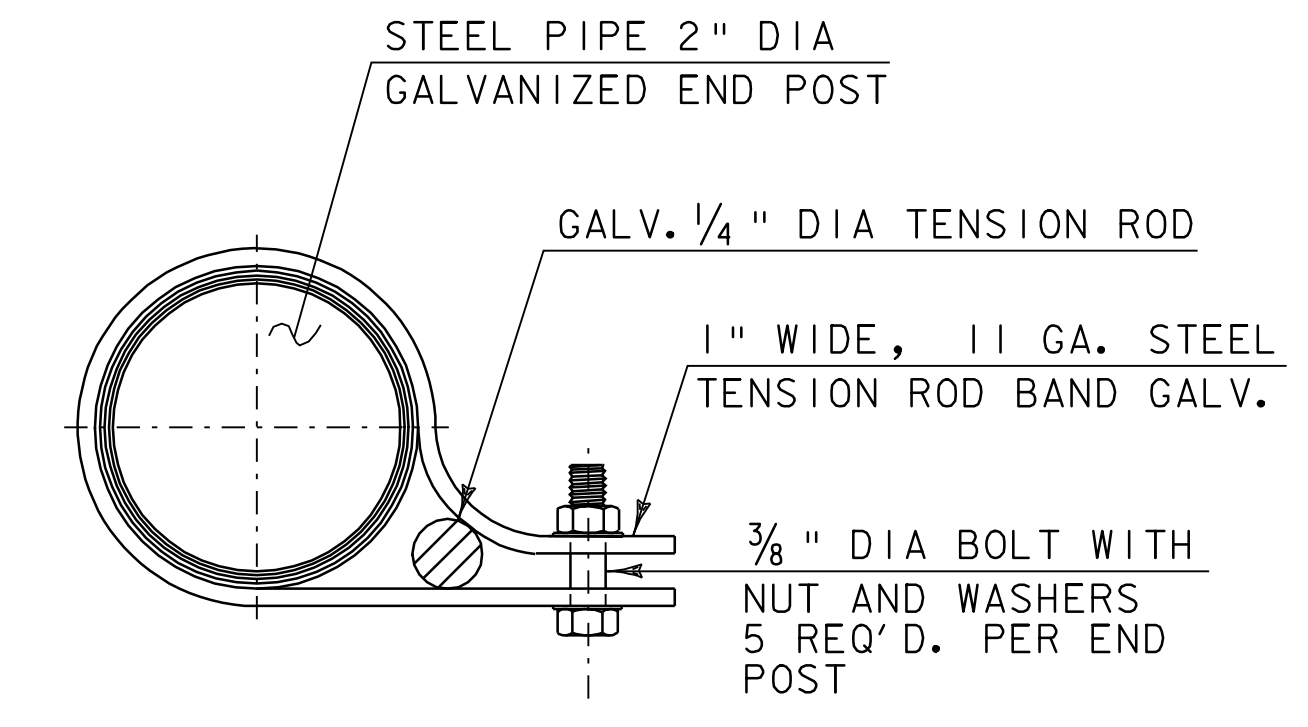
END POST DETAILS



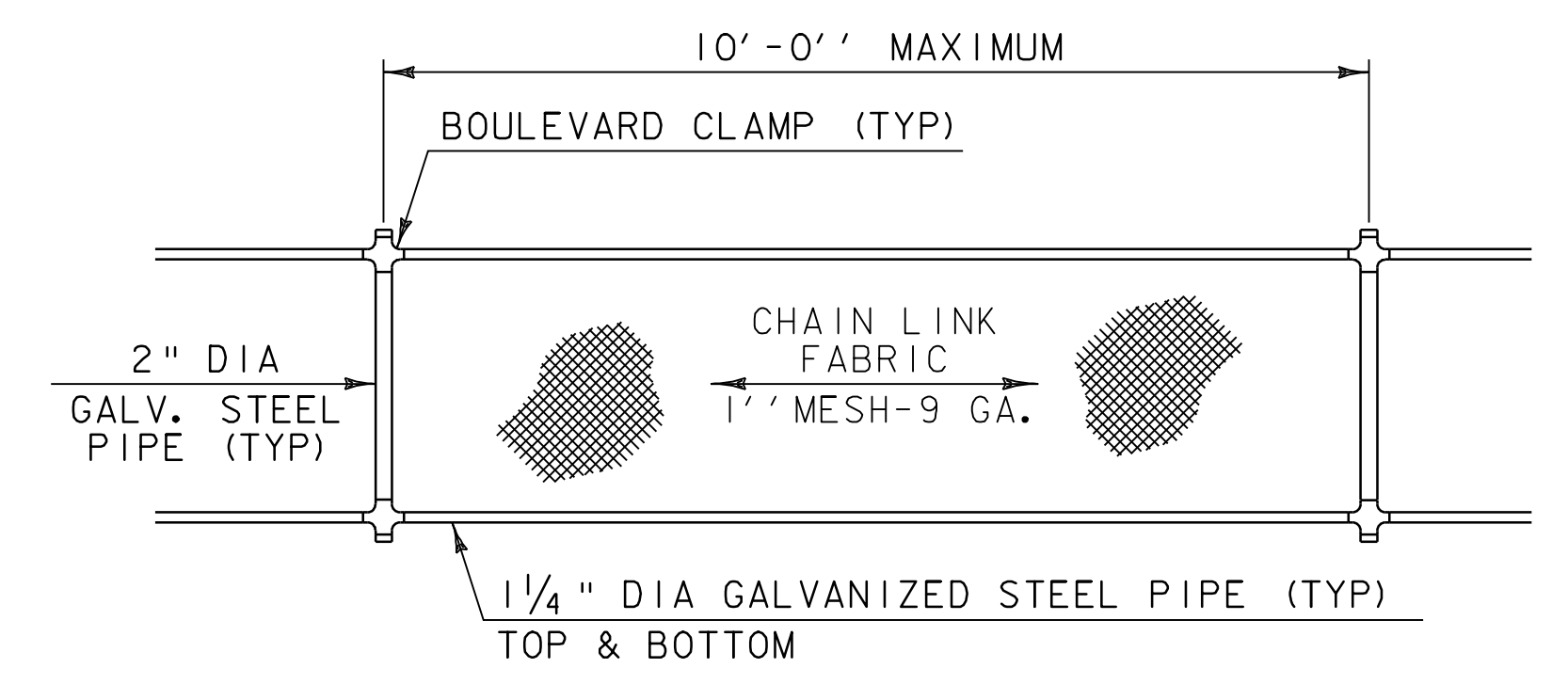
DETAIL A

NOTES

1. THREADS OF STUDS AND U-BOLTS TO BE 5/8-11 UNC.
2. ALL CONNECTION PLATES TO BE GALVANIZED AFTER FABRICATION.
3. 1/4" PIPE LENGTH SHALL BE FIELD CUT TO FIT POST SPACING.
4. CHAIN LINK FABRIC TO BE KNUCKLED TOP AND BOTTOM.
5. ALL BOLTS, NUTS AND WASHERS SHALL CONFORM TO THE SPECIFICATIONS FOR ASTM A307.
6. ALL STEEL PLATES SHALL CONFORM TO THE SPECIFICATION FOR AASHTO M270 GRADE 36.
7. ALL GALVANIZING SHALL CONFORM TO THE REQUIREMENTS OF AASHTO M-181 WITH HARDWARE AND FITTINGS CONFORMING TO THE REQUIREMENTS OF AASHTO M-111 OR AASHTO M-232 WHICHEVER IS APPLICABLE. ALL BOLTS, NUTS AND WASHERS SHALL BE EITHER HOT-DIP GALVANIZED IN ACCORDANCE WITH THE ABOVE AASHTO REQUIREMENTS OR MECHANICALLY GALVANIZED USING A MECHANICALLY DEPOSITED PROCESS CONFORMING TO THE REQUIREMENTS OF AASHTO M-298, CLASS 110.
8. GALVANIZED CHAIN-LINK FABRIC SHALL BE TYPE I (ZINC) CLASS D AS SPECIFIED IN AASHTO M-181.
9. SNOW BARRIER SHALL BEGIN AND END AT THE BRIDGE RAIL POST WHICH WILL PROVIDE A MINIMUM DISTANCE OF 20' (AS SHOWN) OR AS DIRECTED BY THE RESIDENT ENGINEER.
10. ALL REFERENCES TO THE DIAMETERS OF GALVANIZED STEEL PIPE SHALL REFER TO THE OUTSIDE DIAMETER (O.D.).



TENSION ROD BAND



ELEVATION SNOW BARRIER

NOT TO SCALE

SNOW BARRIER DETAIL SHEET

PROJECT NAME: MANCHESTER - DORSET	PLOT DATE: 07-JUN-2010 11
PROJECT NUMBER: NH 2608(1)S	DRAWN BY: C.A.K.
FILE NAME: p06b040.dgn	CHECKED BY: D.W.E.
DESIGNED BY: M.J.M.	SHEET 73 OF 78
IPARM FILE: p06b040bd6.i	