

646.426 DURABLE 6 INCH WHITE LINE, RECESSED
(ALL LINES WILL INCLUDE EDGE LINE BREAKS AND RADIUS FOR TOWN HIGHWAYS)

MANCHESTER:
STA. 271+00.00 - STA. 286+00.00 LT & RT

646.622 TEMPORARY 6 INCH WHITE LINE, PAINT
(ALL LINES WILL INCLUDE EDGE LINE BREAKS AND RADIUS FOR TOWN HIGHWAYS)

MANCHESTER:
STA. 271+00.00 - STA. 286+00.00 LT & RT

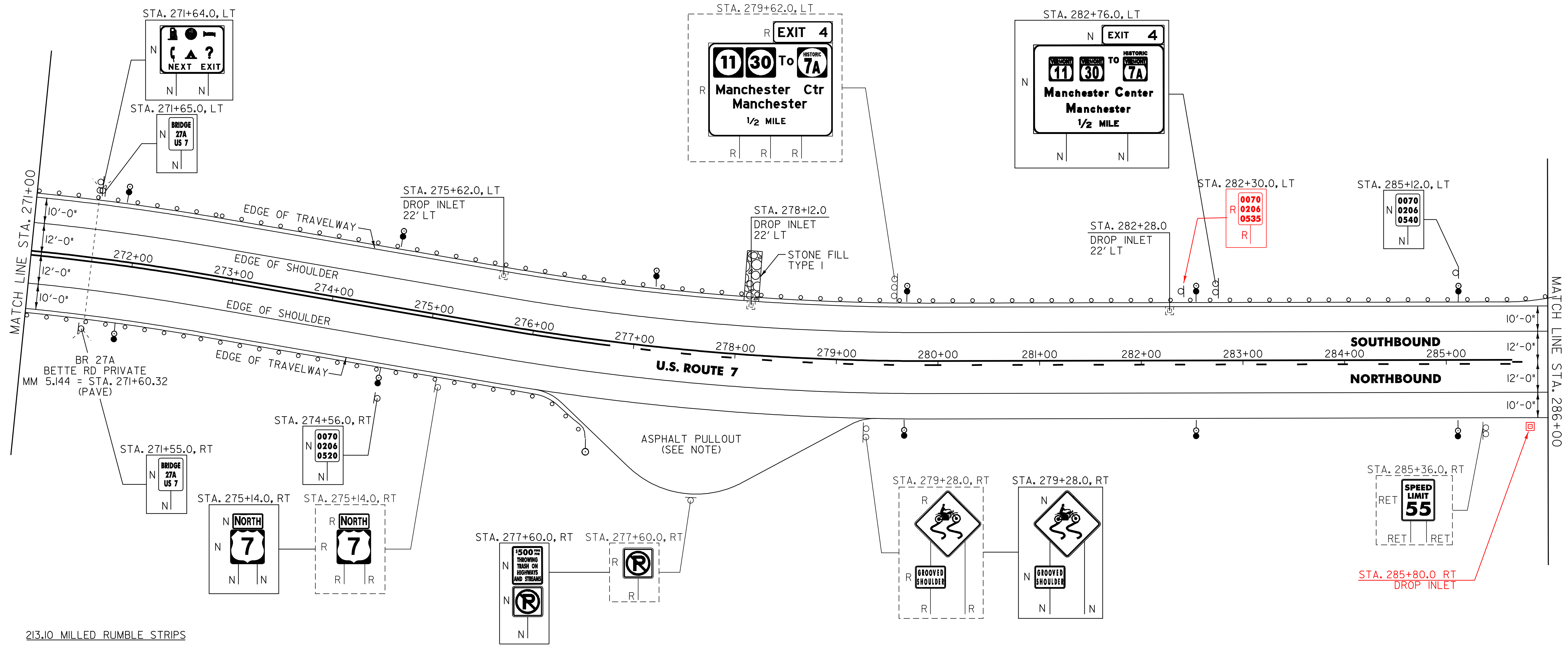
646.436 DURABLE 6 INCH YELLOW LINE, RECESSED
(ALL LINES WILL INCLUDE C/L BREAKS FOR TOWN HIGHWAYS) S=SOLID, D=DASHED

MANCHESTER:
STA. 271+00.00 - STA. 276+67.00 S - S
STA. 276+67.00 - STA. 285+65.00 S - D
STA. 285+65.00 - STA. 286+00.00 - D -

646.632 TEMPORARY 6 INCH YELLOW LINE, PAINT
(ALL LINES WILL INCLUDE C/L BREAKS FOR TOWN HIGHWAYS) S=SOLID, D=DASHED

MANCHESTER:
STA. 271+00.00 - STA. 276+67.00 S - S
STA. 276+67.00 - STA. 285+65.00 S - D
STA. 285+65.00 - STA. 286+00.00 - D -

675.50 REMOVING SIGNS
AS SHOWN - 7



213.10 MILLED RUMBLE STRIPS

MANCHESTER:
STA. 271+00.0 - STA. 276+05.0 RT (505.0 LF)
STA. 271+00.0 - STA. 286+00.0 LT (1500.0 LF)
STA. 279+30.0 - STA. 286+00.0 RT (670.0 LF)

604.412 REHAB. DROP INLETS, CATCH BASINS OR MANHOLES, CLASS I

MANCHESTER:
STA. 275+62.0 LT **STA. 285+80.0 RT**
STA. 278+12.0 LT
STA. 282+28.0 LT

616.35 TREATED TIMBER CURB

MANCHESTER:
STA. 273+08.0 - STA. 278+20.0 LT (512.0 LF)
STA. 280+73.0 - STA. ~~283+33.0~~ LT (~~260.0~~ LF)
~~282+34.0~~ **155.0 LF**

621.20 STEEL BEAM GUARDRAIL, GALVANIZED

MANCHESTER:
286+00 **1500 LF**
STA. 271+00.0 - STA. 285+84.0 LT (1484.0 LF)
STA. 271+00.0 - STA. ~~276+38.5~~ RT (~~538.5~~ LF)
276+26.0 RT **526 LF**

621.50 MANUFACTURED TERMINAL SECTION, FLARED

MANCHESTER:
STA. 276+38.5 - STA. 276+76.0 RT
~~STA. 285+84.0 - STA. 286+00.0 LT~~

621.80 REMOVAL AND DISPOSAL OF GUARDRAIL

MANCHESTER:
STA. 271+00.0 - STA. 276+72.0 RT (572.0 LF)
STA. 271+00.0 - STA. ~~286+00.0~~ LT (~~1500.0~~ LF)
~~283+88.0~~ **1288.0**

676.10 DELINEATOR WITH STEEL POST

○ TYPE I WHITE	● TYPE I AMBER W/WHITE ON BACK	● TYPE I WHITE W/AMBER ON BACK
MANCHESTER: STA. 276+76.0 RT	STA. 271+92.0 LT STA. 274+56.0 LT STA. 277+20.0 LT STA. 279+84.0 LT STA. 282+76.0 LT STA. 285+12.0 LT	STA. 271+92.0 RT STA. 274+56.0 RT STA. 279+84.0 RT STA. 282+76.0 RT STA. 285+12.0 RT

613.10 STONE FILL, TYPE I

MANCHESTER:
STA. 278+10.0 - STA. 278+14.0 LT

NOTE:

1. THE EXISTING ASPHALT PULLOUT SHALL BE PAVED WITH A 2" TYPE III WEARING COURSE. ANY REQUIRED EXCAVATION OR GRADING SHALL BE PERFORMED AS DIRECTED BY THE RESIDENT ENGINEER AND PAID FOR UNDER THE APPLICABLE RENTAL ITEM(S).

NOT TO SCALE

PROJECT LAYOUT SHEET #4

PROJECT NAME: MANCHESTER - DORSET
PROJECT NUMBER: NH 2608(1)S

FILE NAME: p06b040.dgn	PLOT DATE: 07-JUN-2010 11
PROJECT LEADER: D.E.G.	DRAWN BY: C.A.K.
DESIGNED BY: M.J.M.	CHECKED BY: D.W.E.
IPARM FILE: p06b0404.i	SHEET 16 OF 78

SIGN LEGEND
R = REMOVE
S = SALVAGE
N = NEW
RET = RETAIN
B-B = BACK TO BACK
EXISTING = - - - - -
NEW = _____