

646.426 DURABLE 6 INCH WHITE LINE, RECESSED
(ALL LINES WILL INCLUDE EDGE LINE BREAKS AND RADIUS FOR TOWN HIGHWAYS)

MANCHESTER:
STA. 256+00.00 - STA. 271+00.00 LT & RT
STA. 258+20.00 - STA. 262+38.00 DASHED LT
STA. 261+40.00 - STA. 263+98.00 DOTTED RT
STA. 262+38.00 - STA. 266+55.00 DASHED LT
STA. C6+50.00 - STA. C9+50.00 EDGE LINE RT, RAMP C
STA. D1+25.00 - STA. D3+00.00 EDGE LINE RT, RAMP D

646.622 TEMPORARY 6 INCH WHITE LINE, PAINT
(ALL LINES WILL INCLUDE EDGE LINE BREAKS AND RADIUS FOR TOWN HIGHWAYS)

MANCHESTER:
STA. 256+00.00 - STA. 271+00.00 LT & RT
STA. 258+20.00 - STA. 262+38.00 DASHED LT
STA. 261+40.00 - STA. 263+98.00 DOTTED RT
STA. 262+38.00 - STA. 266+55.00 DASHED LT
STA. C6+50.00 - STA. C9+50.00 EDGE LINE RT, RAMP C
STA. D1+25.00 - STA. D3+00.00 EDGE LINE RT, RAMP D

646.436 DURABLE 6 INCH LINE, RECESSED
(ALL LINES WILL INCLUDE C/L BREAKS FOR TOWN HIGHWAYS) S=SOLID, D=DASHED

MANCHESTER:
STA. 256+00.00 - STA. 271+00.00
STA. C6+50.00 - STA. C9+50.00 EDGE LINE LT, RAMP C
STA. D1+25.00 - STA. D3+00.00 EDGE LINE LT, RAMP D
646.632 TEMPORARY 6 INCH YELLOW LINE, PAINT
(ALL LINES WILL INCLUDE C/L BREAKS FOR TOWN HIGHWAYS) S=SOLID, D=DASHED

MANCHESTER:
STA. 256+00.00 - STA. 271+00.00
STA. C6+50.00 - STA. C9+50.00 EDGE LINE LT, RAMP C
STA. D1+25.00 - STA. D3+00.00 EDGE LINE LT, RAMP D

LT C RT
S - S

LT C RT
S - S

646.466 DURABLE 12 INCH WHITE LINE, RECESSED

MANCHESTER:
STA. 256+50.00 - STA. 258+20.00 GORE AREA LT
STA. 258+85.00 - STA. 261+40.00 GORE AREA RT

646.492 DURABLE LETTER OR SYMBOL, THERMOPLASTIC

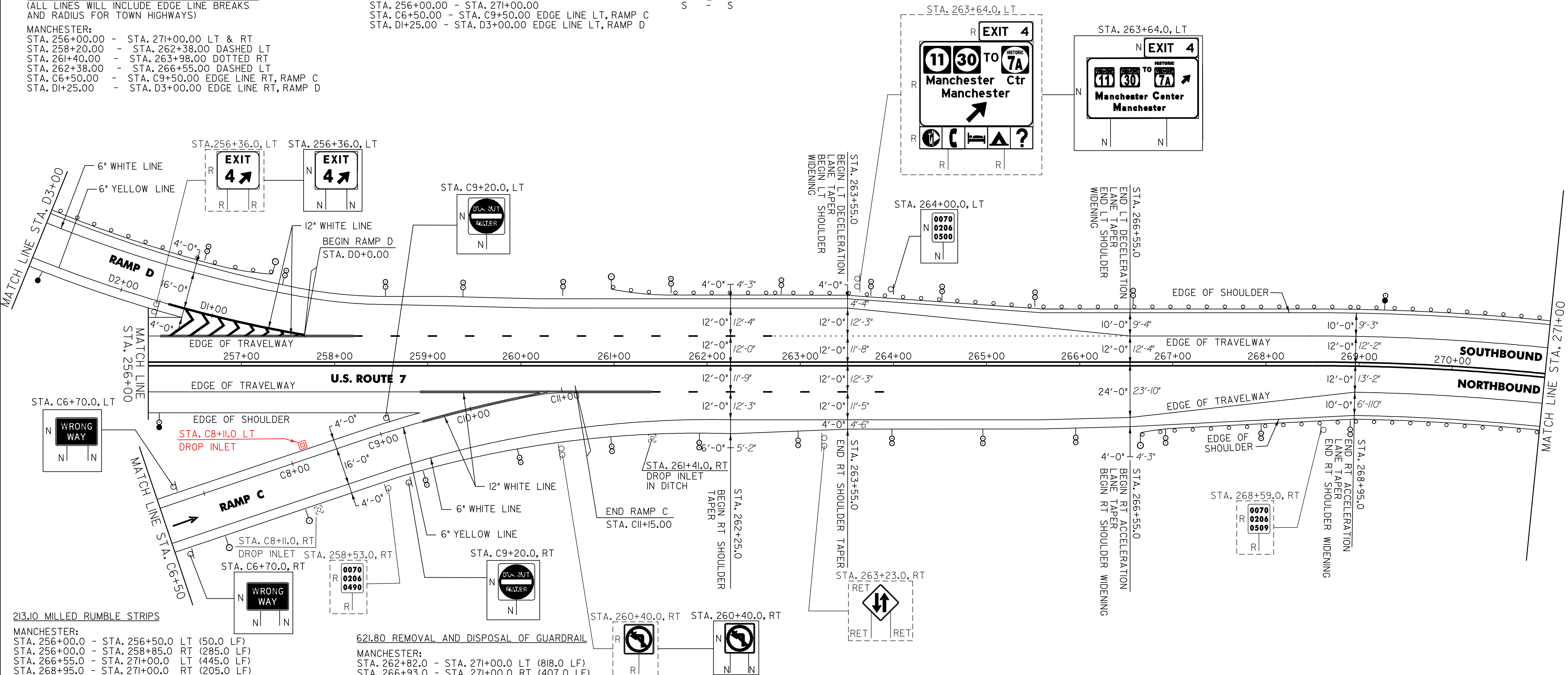
MANCHESTER:
STA. C6+70.00, CL, RAMP C WRONG WAY ARROW (IEA)

646.692 TEMPORARY LETTER OR SYMBOL, PAINT

MANCHESTER:
STA. C6+70.00, CL, RAMP C WRONG WAY ARROW (IEA)

675.50 REMOVING SIGNS

AS SHOWN - X II



213.10 MILLED RUMBLE STRIPS

MANCHESTER:
STA. 256+00.0 - STA. 256+50.0 LT (50.0 LF)
STA. 256+00.0 - STA. 258+85.0 RT (285.0 LF)
STA. 266+55.0 - STA. 271+00.0 LT (445.0 LF)
STA. 268+95.0 - STA. 271+00.0 RT (205.0 LF)

604.412 REHAB. DROP INLETS, CATCH BASINS OR MANHOLES, CLASS I

MANCHESTER: STA. C8+11.0 RT
STA. 261+41.0 RT STA. C8+11.0 LT

621.20 STEEL BEAM GUARDRAIL, GALVANIZED

MANCHESTER:
STA. 261+39.0 - STA. 271+00.0 LT (961.0 LF)
STA. 267+26.0 - STA. 271+00.0 RT (374.0 LF)
STA. D1+18.0 - STA. D3+00.0 RT (82.0 LF)
D1+02.5 (197.5 LF)

621.50 MANUFACTURED TERMINAL SECTION, FLARED

MANCHESTER:
STA. 261+01.5 - STA. 261+39.0 LT
STA. 266+88.5 - STA. 267+26.0 RT
STA. D0+80.5 - STA. D1+18.0 RT

621.80 REMOVAL AND DISPOSAL OF GUARDRAIL

MANCHESTER:
STA. 262+82.0 - STA. 271+00.0 LT (818.0 LF)
STA. 266+93.0 - STA. 271+00.0 RT (407.0 LF)
STA. D1+21.0 - STA. D3+00.0 RT (179.0 LF)

676.10 DELINEATOR WITH STEEL POST

⊙ TYPE I WHITE	⊙ TYPE II WHITE	⊙ TYPE II WHITE	⊙ TYPE I WHITE W/ AMBER ON BACK
MANCHESTER: STA. 261+01.5 LT STA. 266+88.5 RT STA. C7+00.0 RT STA. C8+00.0 RT STA. D0+80.5 RT	STA. 256+54.0 LT STA. 257+54.0 LT STA. 258+54.0 LT STA. 259+54.0 LT STA. 260+54.0 LT STA. 261+54.0 LT STA. 262+54.0 LT STA. 263+54.0 LT STA. 264+54.0 LT STA. 265+54.0 LT STA. 266+54.0 LT	STA. 258+96.0 RT STA. 259+96.0 RT STA. 260+96.0 RT STA. 261+96.0 RT STA. 262+96.0 RT STA. 263+96.0 RT STA. 264+96.0 RT STA. 265+96.0 RT STA. 266+96.0 RT STA. 267+96.0 RT STA. 268+96.0 RT	STA. 256+08.0 RT STA. 269+28.0 LT
⊙ TYPE I AMBER			

NOTE:
1. MAINTAIN EXISTING FLARE RATE FOR NEW MANUFACTURED TERMINAL END SECTIONS.

NOT TO SCALE

PROJECT LAYOUT SHEET #3

PROJECT NAME: MANCHESTER - DORSET
PROJECT NUMBER: NH 2608(1)S
FILE NAME: p06b040.dgn
PROJECT LEADER: D.E.G.
DESIGNED BY: M.J.M.
IPARM FILE: p06b040i3.i
PLOT DATE: 07-JUN-2010 11:00
DRAWN BY: C.A.K.
CHECKED BY: D.W.E.
SHEET 15 OF 78

SIGN LEGEND
R = REMOVE
S = SALVAGE
N = NEW
RET = RETAIN
B-B = BACK TO BACK
EXISTING = - - - - -
NEW = _____