

TEMPORARY 100mm WHITE LINE, PAINT
 DURABLE 100mm WHITE LINE, THERMOPLASTIC
 STA 12+640 TO 12+757 SOLID LT & RT EDGE LINE
 STA 12+759 TO 12+800 SOLID LT & RT EDGE LINE

TEMPORARY 100mm YELLOW LINE, PAINT
 DURABLE 100mm YELLOW LINE, THERMOPLASTIC
 STA 12+640 TO 12+757 SOLID LT & RT
 STA 12+759 TO 12+800 SOLID LT & RT

TEMPORARY CROSSWALK MARKING, PAINT
 STA 12+758 LT TO RT

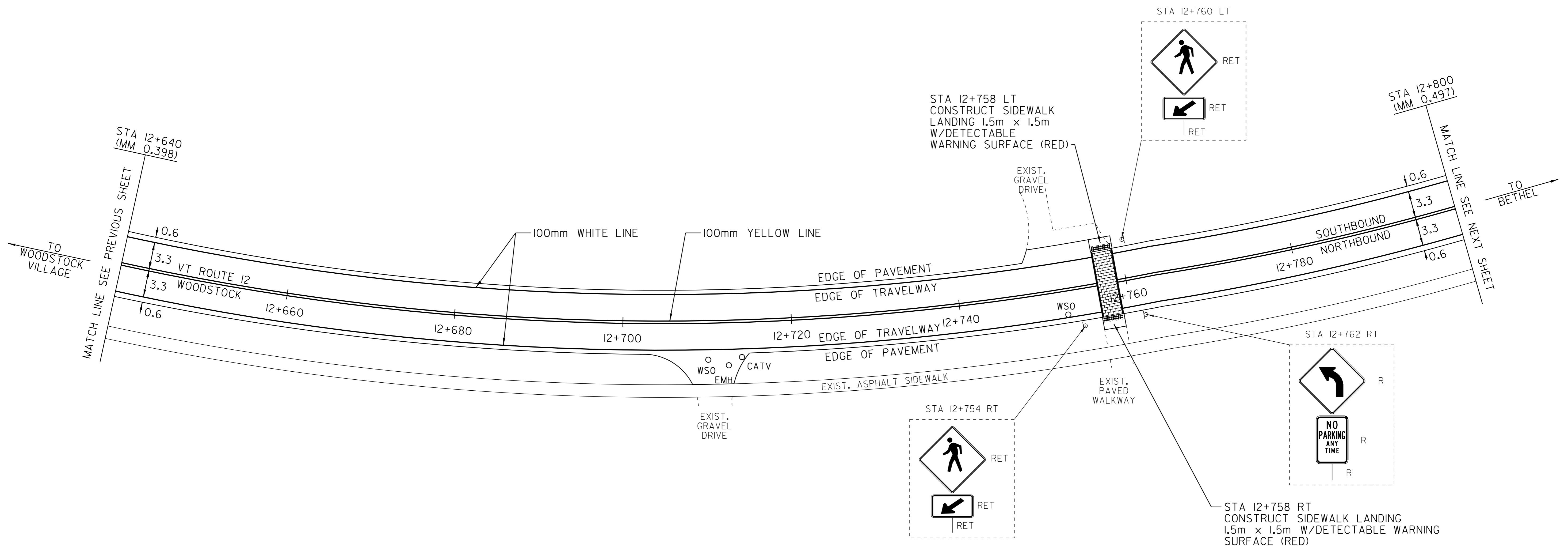
SPECIAL PROVISION (DURABLE
 CROSSWALK MARKING, IMPRINTED/COLORIZED)
 STA 12+758 LT TO RT

CONSTRUCT SIDEWALK RAMP
 W/DETECTABLE WARNING SURFACE (RED)
 STA 12+758 LT
 STA 12+758 RT

CHANGING ELEVATION OF DROP INLETS,
 CATCH BASINS, OR MANHOLES BY OTHERS
 STA 12+712 RT (ELECTRIC MH)
 STA 12+714 RT (CABLE TV MH)

ADJUST ELEVATION
 OF VALVE BOX
 STA 12+710 RT
 STA 12+753 RT

REMOVING SIGNS
 AS SHOWN - 2



NOT TO SCALE

LEGEND

- R = REMOVE EXISTING
- S = SALVAGE
- R&S = REMOVE AND SALVAGE
- N = NEW
- RET = RETAIN
- B-B = BACK TO BACK

NOTE: ALL DIMENSIONS IN METERS EXCEPT AS INDICATED

PAVING LAYOUT 5	PROJECT NAME: WOODSTOCK	
	PROJECT NUMBER: STP 2509(I)S	
	DESIGN FILE NAME: /pave/05c056/pc056.dgn	PLOT DATE: 11-JUN-2012 16:17
	IPARM FILE NAME: pc056ia05.i	DRAWN BY: MRS
	PROJECT LEADER: PTS	CHECKED BY: NLL
	DESIGNED BY: NLL	SHEET 66 OF 73