

TEMPORARY 100mm WHITE LINE, PAINT
 DURABLE 100mm WHITE LINE, THERMOPLASTIC
 STA 1+780 TO 1+785 SOLID LT PARKING
 STA 1+785 TO 1+789 SOLID LT NO PARKING
 STA 1+789 TO 1+841 SOLID LT PARKING
 STA 1+841 TO 1+848 SOLID LT NO PARKING
 STA 1+851 TO 1+855 SOLID LT NO PARKING
 STA 1+855 TO 1+900 SOLID LT PARKING
 STA 1+900 TO 1+907 SOLID LT NO PARKING
 STA 1+907 TO 1+926 SOLID RT PARKING
 STA 1+909 TO 1+910 SOLID LT NO PARKING
 STA 1+910 TO 1+940 SOLID LT PARKING
 STA 1+926 TO 1+930 SOLID RT NO PARKING
 STA 1+930 TO 1+940 SOLID RT PARKING

TEMPORARY 600mm STOP BAR, PAINT
 DURABLE 600mm STOP BAR, TYPE IATAPE
 STA 1+823 RT (VT ROUTE 106)
 STA 1+891 RT (COURT ST)
 TEMPORARY LETTER OR SYMBOL, PAINT
 DURABLE LETTER OR SYMBOL, TYPE IATAPE
 STA 1+827 RT - "STOP" (VT ROUTE 106)
 STA 1+854 LT - "WEST"
 STA 1+854 RT - "EAST"
 STA 1+868 LT - "US 4"
 STA 1+868 RT - "US 4"
 STA 1+882 LT - "ONLY"
 STA 1+882 RT - "ONLY"
 STA 1+892 RT - "STOP" (COURT ST)
 STA 1+896 LT - LEFT TURN ARROW
 STA 1+896 RT - THROUGH ARROW
 STA 1+910 RT - DISABLED MARKING
 STA 1+911 LT - "WEST"
 STA 1+925 LT - "US 4"
 STA 1+925 RT - "VT 12"
 STA 1+939 LT - "ONLY"
 STA 1+939 RT - "ONLY"

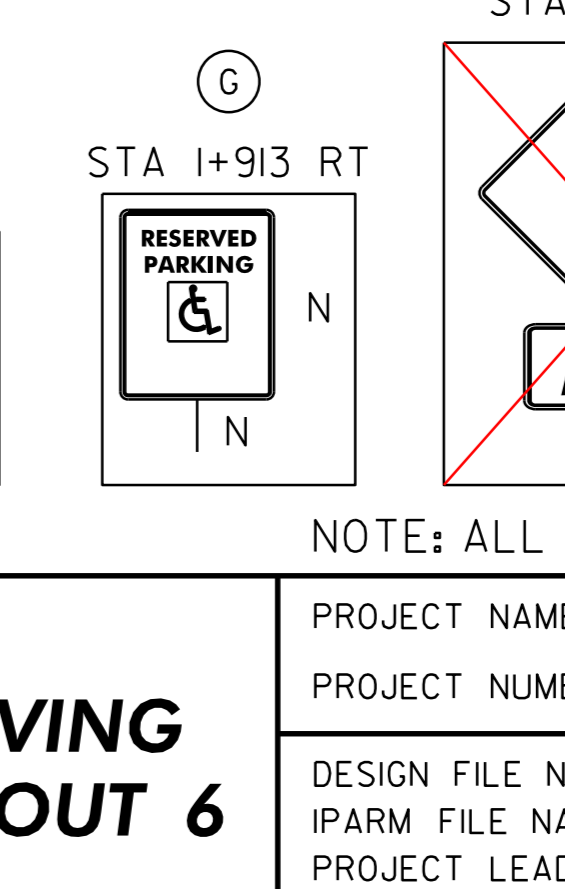
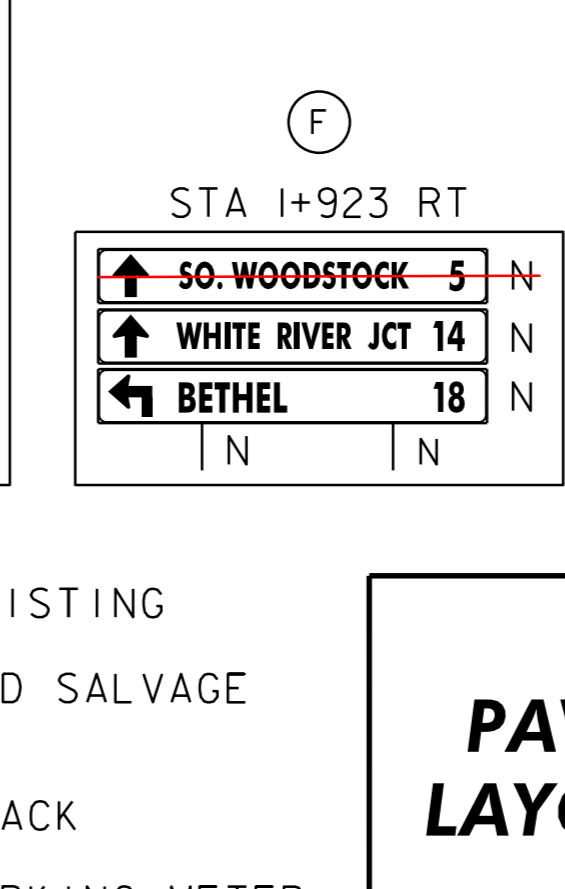
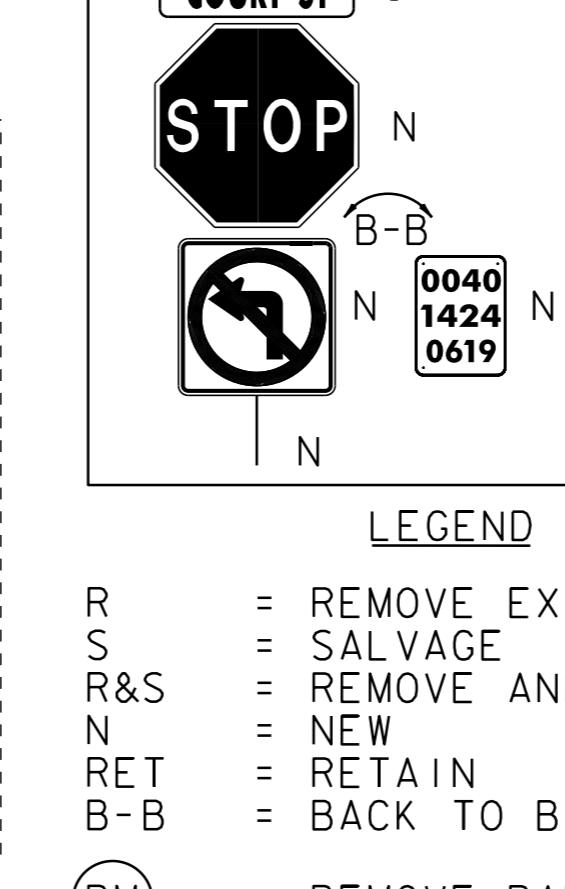
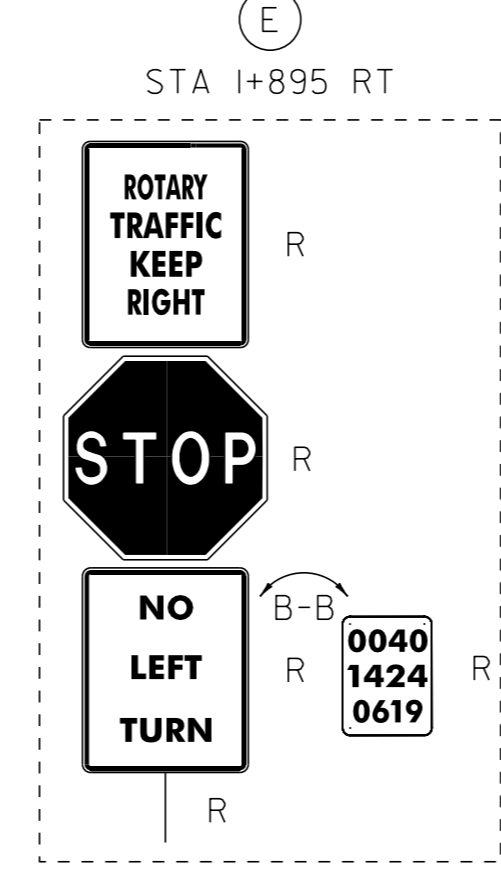
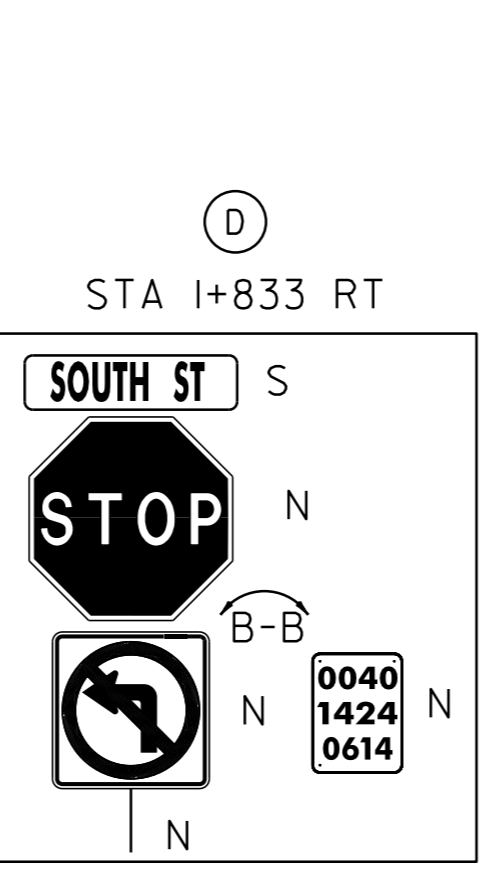
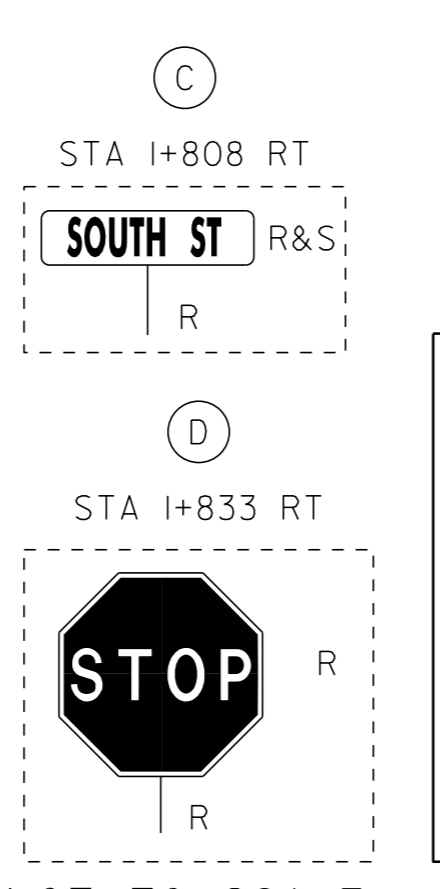
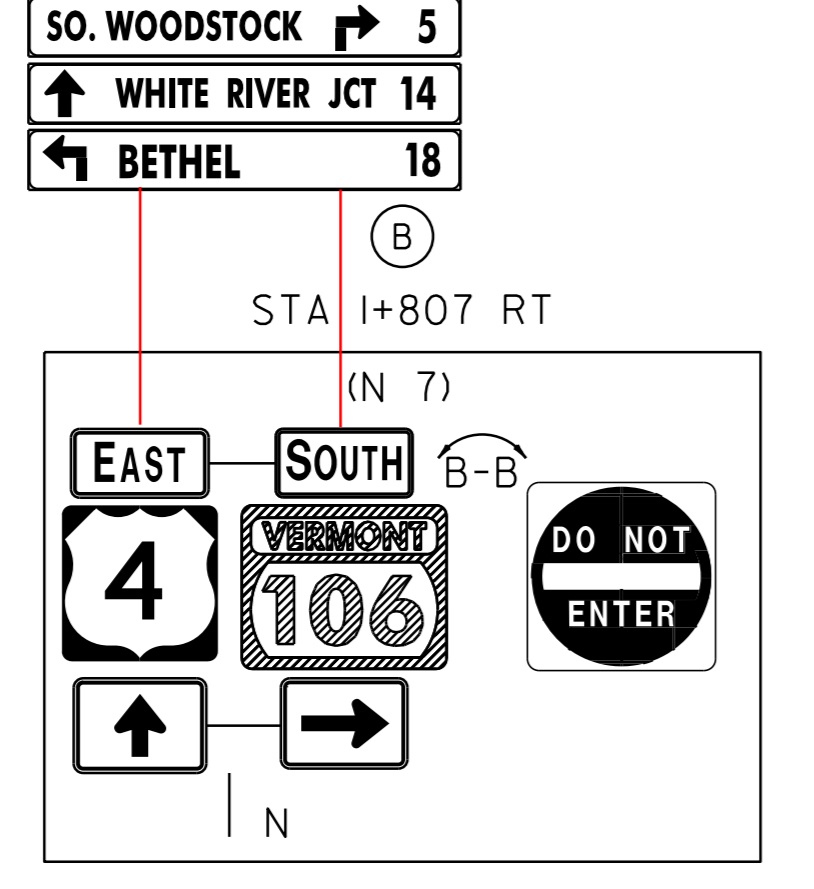
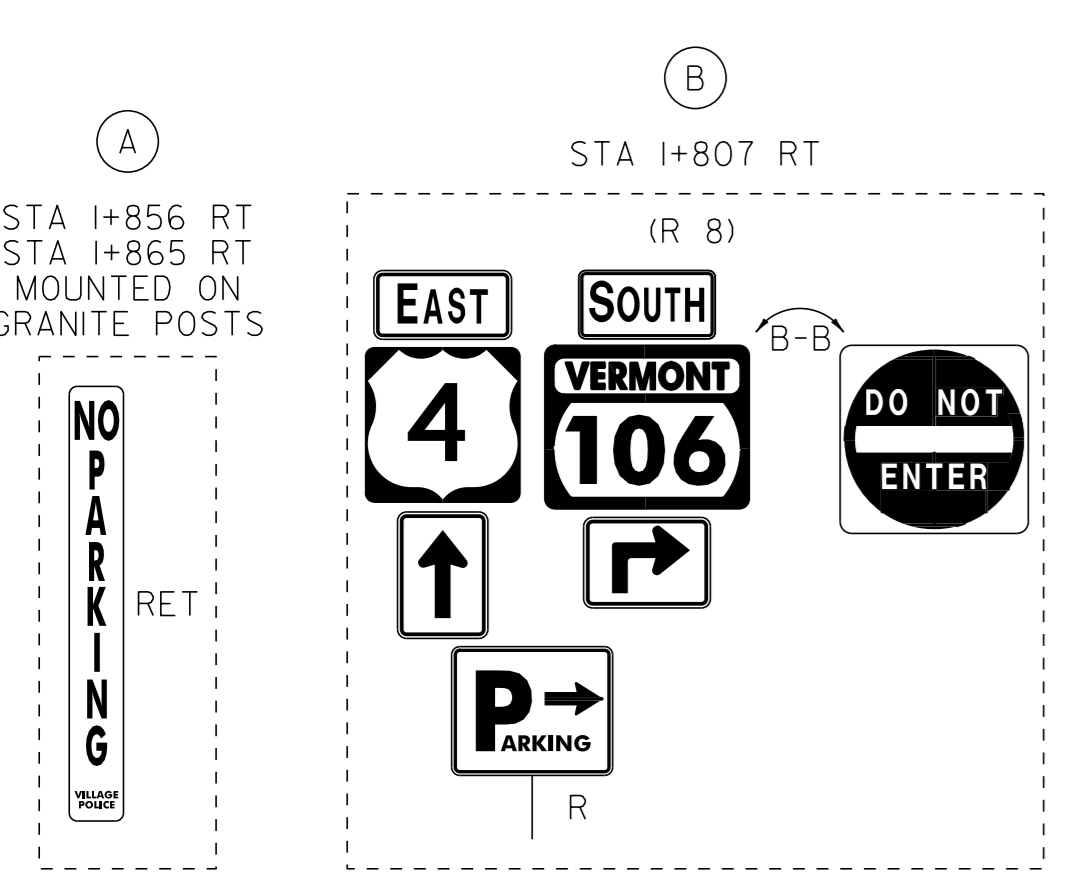
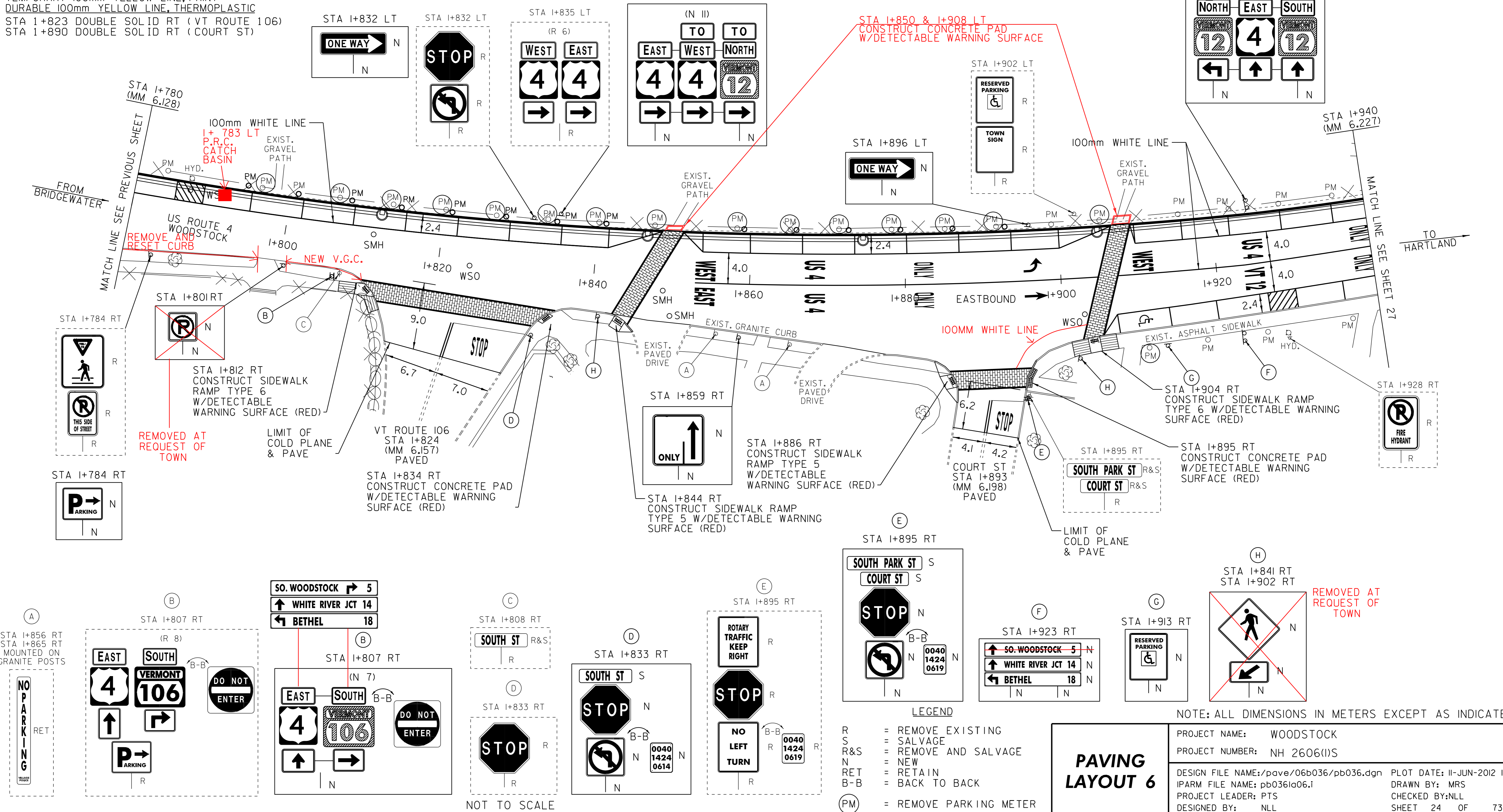
TEMPORARY CROSSWALK MARKING, PAINT
 STA 1+812 TO 1+834 RT
 STA 1+844 TO 1+850 RT TO LT
 STA 1+886 TO 1+895 RT
 STA 1+904 TO 1+908 RT TO LT
 SPECIAL PROVISION (DURABLE CROSSWALK MARKING, IMPRINTED/COLORIZED)
 STA 1+812 TO 1+834 RT
 STA 1+844 TO 1+850 RT TO LT
 STA 1+886 TO 1+895 RT
 STA 1+904 TO 1+908 RT TO LT
 CONSTRUCT SIDEWALK RAMP W/DETECTABLE WARNING SURFACE (RED)
 STA 1+812 RT (TYPE 6)
 STA 1+834 RT (CONCRETE PAD)
 STA 1+844 RT (TYPE 5)
 STA 1+886 RT (TYPE 5)
 STA 1+895 RT (CONCRETE PAD)
 STA 1+904 RT (TYPE 6)
 I+850 LT (CONCRETE PAD)
 I+908 LT (CONCRETE PAD)

SPECIAL PROVISION (REMOVE AND RESET PARKING METER)
 FROM STA 1+796 TO 1+794 LT
 FROM STA 1+806 TO 1+808 LT
 FROM STA 1+813 TO 1+814 LT
 FROM STA 1+820 TO 1+821 LT
 FROM STA 1+827 TO 1+828 LT
 FROM STA 1+833 TO 1+835 LT
 FROM STA 1+840 TO 1+841 LT
 FROM STA 1+847 TO 1+801 LT
 FROM STA 1+858 TO 1+859 LT
 FROM STA 1+865 TO 1+866 LT
 FROM STA 1+871 TO 1+873 LT
 FROM STA 1+878 TO 1+879 LT
 FROM STA 1+885 TO 1+886 LT
 FROM STA 1+892 TO 1+893 LT
 SPECIAL PROVISION (REMOVE PARKING METER) (TO BE RETURNED TO THE TOWN)
 STA 1+905 LT
 STA 1+911 RT

CHANGING ELEVATION OF SEWER MANHOLES
 STA 1+811 LT
 STA 1+849 RT
 STA 1+850 RT
 ADJUST ELEVATION OF VALVE BOX DONE BY TOWN
 STA 1+787 LT
 STA 1+824 RT
 STA 1+903 RT
 VERTICAL GRANITE CURB (100mm REVEAL)
 STA 1+780 TO 1+940 LT
 REMOVING SIGNS AS SHOWN - 29
 ERECTING SALVAGED SIGNS AS SHOWN - 3

TEMPORARY 100mm WHITE LINE, PAINT
 STA 1+853 TO 1+905 SOLID RT TO CL LANE LINE
 STA 1+907 TO 1+940 SOLID CL TO LT LANE LINE
 DURABLE 100mm WHITE LINE, TYPE IATAPE
 STA 1+853 TO 1+905 SOLID RT TO CL LANE LINE
 STA 1+907 TO 1+940 SOLID CL TO LT LANE LINE

TEMPORARY 100mm YELLOW LINE, PAINT
 DURABLE 100mm YELLOW LINE, THERMOPLASTIC
 STA 1+823 DOUBLE SOLID RT (VT ROUTE 106)
 STA 1+890 DOUBLE SOLID RT (COURT ST)



- LEGEND
- R = REMOVE EXISTING
 - S = SALVAGE
 - R&S = REMOVE AND SALVAGE
 - N = NEW
 - RET = RETAIN
 - B-B = BACK TO BACK
 - (PM) = REMOVE PARKING METER

PAVING LAYOUT 6

NOTE: ALL DIMENSIONS IN METERS EXCEPT AS INDICATED

PROJECT NAME: WOODSTOCK
 PROJECT NUMBER: NH 2606(1)S
 DESIGN FILE NAME: /pave/06b036/pb036.dgn PLOT DATE: 11-JUN-2012 16:15
 IPARM FILE NAME: pb0361a06.i DRAWN BY: MRS
 PROJECT LEADER: PTS CHECKED BY: NLL
 DESIGNED BY: NLL SHEET 24 OF 73