

646.402 DURABLE 4 INCH WHITE LINE, THERMOPLASTIC
STA. 230+00 TO 234+37.92, SOLID LT & RT

646.412 DURABLE 4 INCH YELLOW LINE, THERMOPLASTIC
STA. 230+00 TO 231+13, DOUBLE SOLID LT & RT
STA. 231+13 TO 234+37.92, SOLID LT & RT

646.452 DURABLE 8 INCH YELLOW LINE, THERMOPLASTIC
STA. 230+00 TO 231+13, SOLID DIAGONALS LT & RT

646.602 TEMPORARY 4 INCH WHITE LINE, PAINT
STA. 230+00 TO 234+37.92, SOLID LT & RT

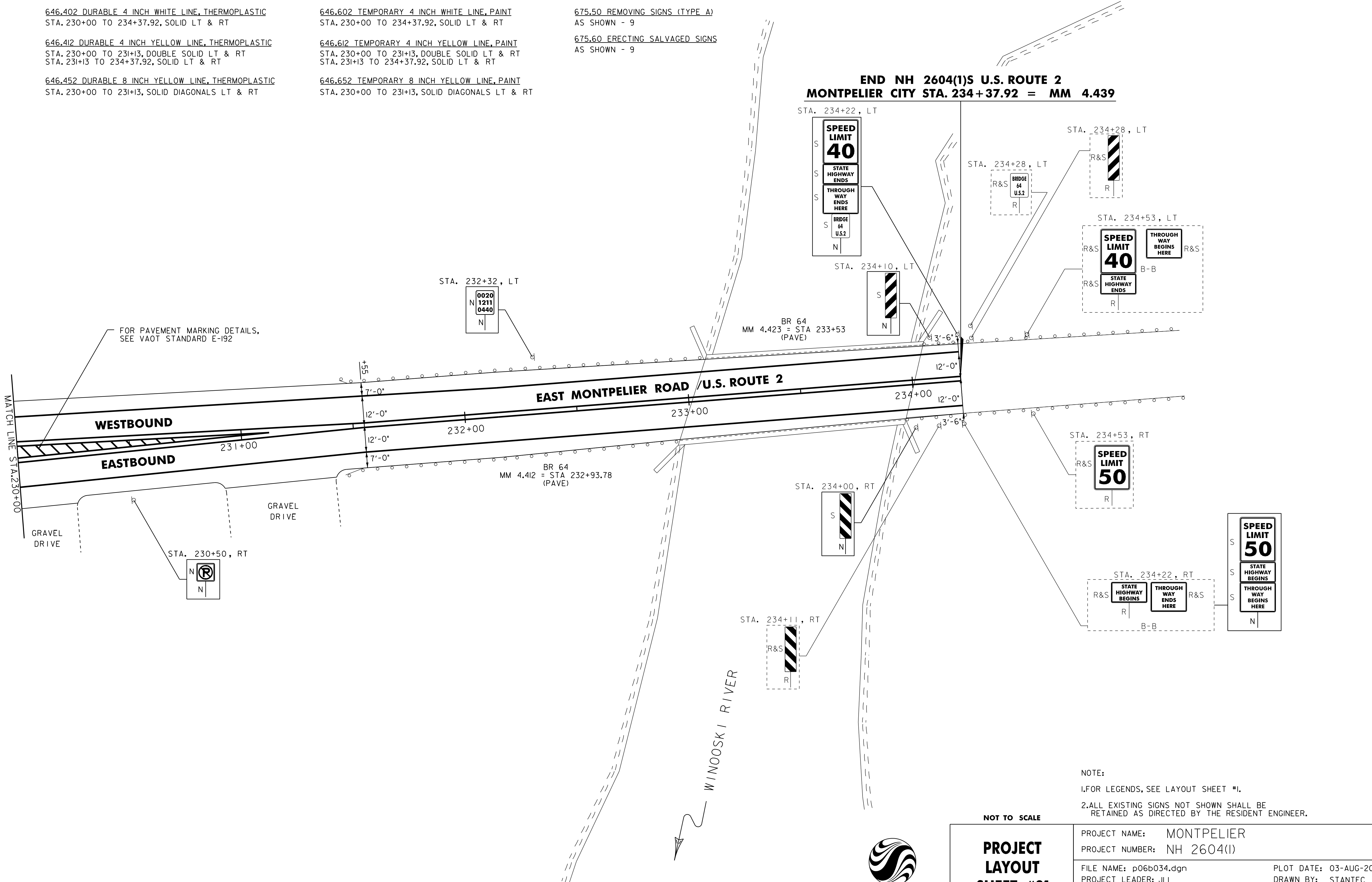
646.612 TEMPORARY 4 INCH YELLOW LINE, PAINT
STA. 230+00 TO 231+13, DOUBLE SOLID LT & RT
STA. 231+13 TO 234+37.92, SOLID LT & RT

646.652 TEMPORARY 8 INCH YELLOW LINE, PAINT
STA. 230+00 TO 231+13, SOLID DIAGONALS LT & RT

675.50 REMOVING SIGNS (TYPE A)
AS SHOWN - 9

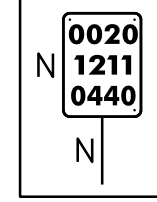
675.60 ERECTING SALVAGED SIGNS
AS SHOWN - 9

**END NH 2604(1)S U.S. ROUTE 2
MONTPELIER CITY STA. 234+37.92 = MM 4.439**



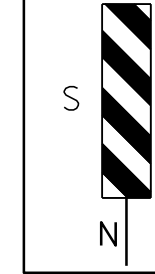
FOR PAVEMENT MARKING DETAILS,
SEE VAOT STANDARD E-192

STA. 232+32, LT

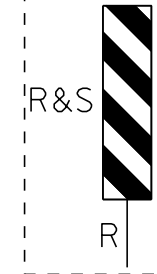


BR 64
MM 4.423 = STA 233+53
(PAVE)

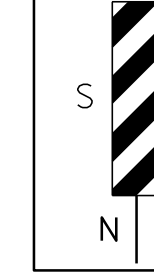
STA. 234+00, RT



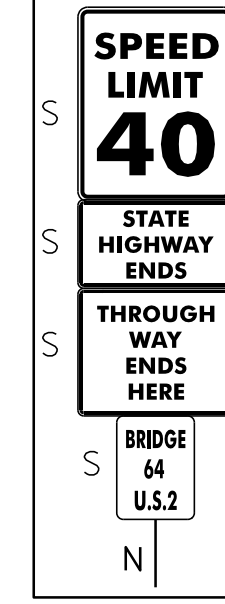
STA. 234+11, RT



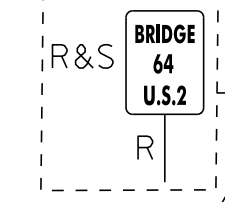
STA. 234+10, LT



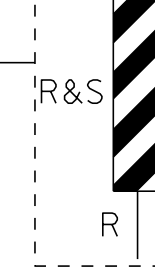
STA. 234+22, LT



STA. 234+28, LT



STA. 234+28, LT



STA. 234+53, LT



THROUGH WAY BEGINS HERE

STA. 234+53, RT



SPEED LIMIT 50

STA. 234+22, RT



SPEED LIMIT 50

STATE HIGHWAY BEGINS
THROUGH WAY BEGINS HERE

NOTE:
1. FOR LEGENDS, SEE LAYOUT SHEET #1.
2. ALL EXISTING SIGNS NOT SHOWN SHALL BE
RETAINED AS DIRECTED BY THE RESIDENT ENGINEER.

NOT TO SCALE



PROJECT LAYOUT SHEET #21

PROJECT NAME: MONTPELIER	PLOT DATE: 03-AUG-2011 4:09
PROJECT NUMBER: NH 2604(1)	DRAWN BY: STANTEC
FILE NAME: p06b034.dgn	CHECKED BY: JLL
PROJECT LEADER: JLL	SHEET 38 OF 84
DESIGNED BY: MCF	
IPARM FILE: p06b034i21.i	