

604.412, 604.415 OR 604.418 REHAB.
Dis. CBs OR MHS, CLASS I, II OR III
STA. 177+04, RT
STA. 178+56, RT

604.42 CHANGING ELEVATION OF SEWER MANHOLES
STA. 177+36, RT

629.20 ADJUST ELEVATION OF VALVE BOX
STA. 177+35, LT
STA. 177+38, LT
STA. 177+45, LT
STA. 177+47, LT
STA. 177+50, LT

646.402 DURABLE 4 INCH WHITE LINE, THERMOPLASTIC
(ALL LINES WILL INCLUDE EDGE LINE AND LANE LINE
BREAKS AND RADIUS FOR SIDE ROADS)
STA. 177+00 TO 179+62.56, SOLID LT & RT
STA. 177+00 TO 177+49, DOTTED RT
STA. 177+49 TO 179+62.56 SOLID RT

646.412 DURABLE 4 INCH YELLOW LINE, THERMOPLASTIC
(ALL LINES WILL INCLUDE C BREAKS FOR SIDE ROADS)
STA. 177+00 TO 179+62.56, DOUBLE SOLID LT
STA. 177+41, DOUBLE SOLID RT (SCRIBNER STREET)

646.482 DURABLE 24 INCH STOP BAR, THERMOPLASTIC
STA. 177+41, RT (SCRIBNER STREET)
STA. 179+61, LT & RT

646.492 DURABLE LETTER OR SYMBOL, THERMOPLASTIC
STA. 177+41, RT - "STOP"
STA. 177+53, C - "ONLY"
STA. 177+93, C - ARROW
STA. 179+12, C - "ONLY"
STA. 179+52, C - ARROW

646.502 DURABLE CROSSWALK MARKING, THERMOPLASTIC
STA. 177+34, RT

646.602 TEMPORARY 4 INCH WHITE LINE, PAINT
(ALL LINES WILL INCLUDE EDGE LINE AND LANE LINE
BREAKS AND RADIUS FOR SIDE ROADS)
STA. 177+00 TO 179+62.56, SOLID LT & RT
STA. 177+00 TO 177+79, DOTTED RT
STA. 177+49 TO 179+62.56 SOLID RT

646.612 TEMPORARY 4 INCH YELLOW LINE, PAINT
(ALL LINES WILL INCLUDE C BREAKS FOR SIDE ROADS)
STA. 177+00 TO 179+62.56, DOUBLE SOLID LT
STA. 177+41, DOUBLE SOLID RT (SCRIBNER STREET)

646.682 TEMPORARY 24 INCH STOP BAR, PAINT
STA. 177+41, RT (SCRIBNER STREET)
STA. 179+61, LT & RT

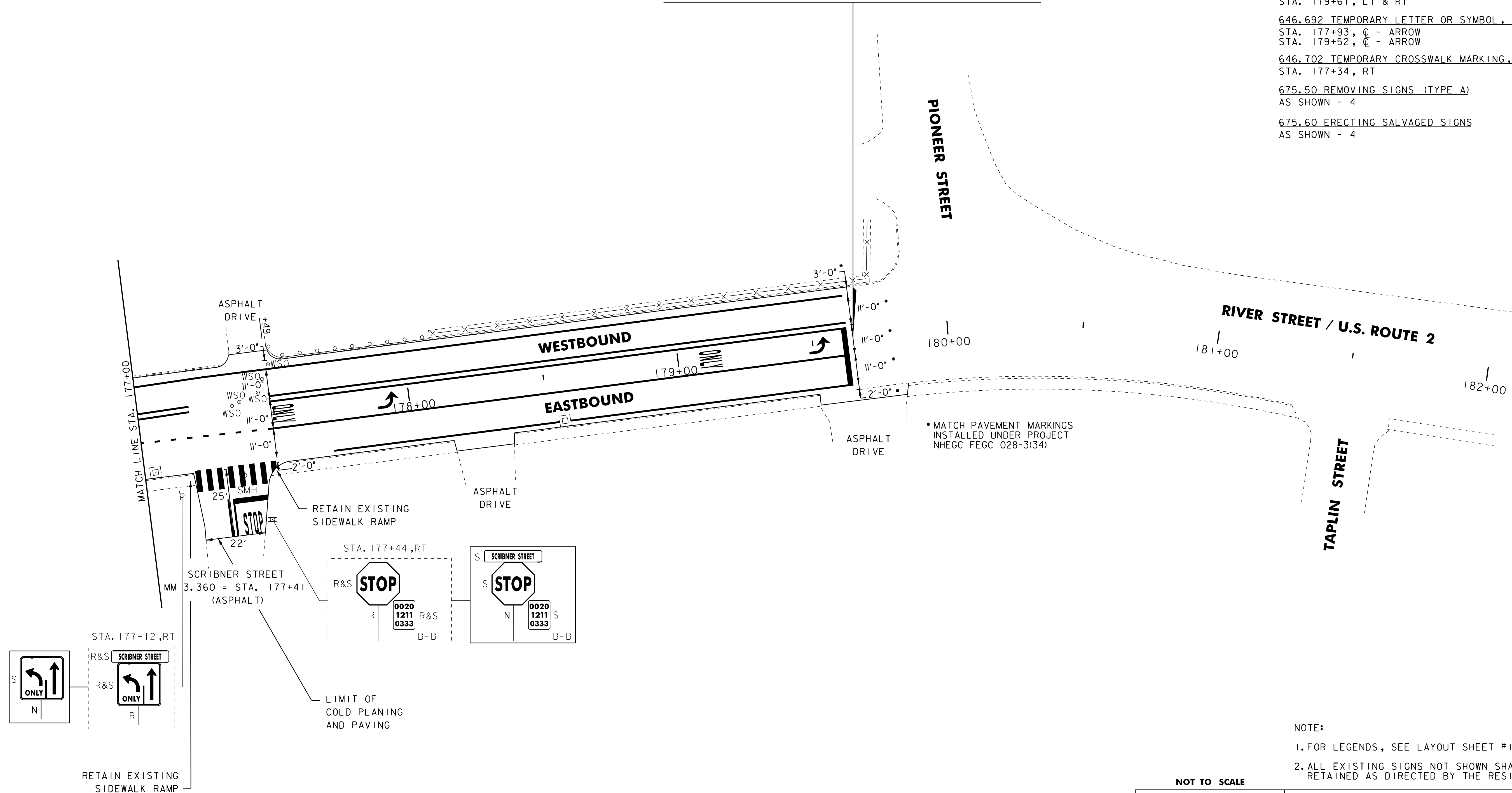
646.692 TEMPORARY LETTER OR SYMBOL, PAINT
STA. 177+93, C - ARROW
STA. 179+52, C - ARROW

646.702 TEMPORARY CROSSWALK MARKING, PAINT
STA. 177+34, RT

675.50 REMOVING SIGNS (TYPE A)
AS SHOWN - 4

675.60 ERECTING SALVAGED SIGNS
AS SHOWN - 4

**STOP NH 2604(1)S U.S. ROUTE 2
MONTPELIER CITY STA. 179+62.56 = MM 3.402**



- NOTE:
- FOR LEGENDS, SEE LAYOUT SHEET #1.
 - ALL EXISTING SIGNS NOT SHOWN SHALL BE RETAINED AS DIRECTED BY THE RESIDENT ENGINEER.

NOT TO SCALE

**PROJECT
LAYOUT
SHEET #18**



PROJECT NAME: MONTPELIER
PROJECT NUMBER: NH 2604(1)

FILE NAME: p06b034.dgn
PROJECT LEADER: JLL
DESIGNED BY: MCF
IPARM FILE: p06b034i18.i

PLOT DATE: 03-AUG-2011 14:09
DRAWN BY: STANTEC
CHECKED BY: JLL
SHEET 35 OF 84