

604.412, 604.415 OR 604.418 REHAB.
DIS, CBS OR MHS, CLASS I, II OR III

STA. 144+00, RT
STA. 145+12, RT
STA. 146+92, RT

604.42 CHANGING ELEVATION OF SEWER MANHOLES

STA. 143+60, LT
STA. 143+68, RT
STA. 144+10, RT

616.28 CAST-IN-PLACE CONCRETE CURB, TYPE B

STA. 143+93 TO STA. 144+33, RT
STA. 144+16 TO STA. 144+29, LT
STA. 145+05 TO STA. 145+24, RT
STA. 145+24 TO STA. 145+34, RT
STA. 145+78 TO STA. 145+93, RT
STA. 146+18 TO STA. 146+35, RT

616.41 REMOVAL OF EXISTING CURB

STA. 143+93 TO STA. 144+33, RT
STA. 144+16 TO STA. 144+29, LT
STA. 145+05 TO STA. 145+24, RT
STA. 145+24 TO STA. 145+34, RT
STA. 145+78 TO STA. 145+93, RT
STA. 146+18 TO STA. 146+35, RT

618.10 PORTLAND CEMENT CONCRETE SIDEWALK, 5 INCH

STA. 143+93 TO STA. 144+33, RT
STA. 144+16 TO STA. 144+29, LT
STA. 145+05 TO STA. 145+24, RT
STA. 145+24 TO STA. 145+34, RT
STA. 145+78 TO STA. 145+93, RT
STA. 146+18 TO STA. 146+35, RT

618.30 DETECTABLE WARNING SURFACE

STA. 144+13, RT
STA. 144+16, LT
STA. 145+15, RT 145+18, RT
STA. 145+27, RT 145+28, RT
STA. 145+90, RT 145+86, RT
STA. 146+23, RT

621.20 STEEL BEAM GUARDRAIL, GALVANIZED

STA. 144+18 TO STA. 144+22, LT
STA. 144+50 TO STA. 144+50, LT
621.60 ANCHOR FOR STEEL BEAM RAIL

STA. 144+22, LT
STA. 144+50, LT

621.80 REMOVAL AND DISPOSAL OF GUARDRAIL

STA. 144+18 TO STA. 144+22, LT
STA. 144+50 TO STA. 144+50, LT

646.402 DURABLE 4 INCH WHITE LINE, THERMOPLASTIC

(ALL LINES WILL INCLUDE EDGE LINE AND LANE LINE BREAKS AND RADIUS FOR SIDE ROADS)
STA. 143+00 TO 148+00, SOLID LT & RT
STA. 143+00 TO 143+67, SOLID RT
STA. 143+80, DOUBLE SOLID RT (BERLIN STREET)
STA. 144+30, DOUBLE SOLID LT (GRANITE STREET)
STA. 146+20, SOLID RT (SLIP RAMP)

646.412 DURABLE 4 INCH YELLOW LINE, THERMOPLASTIC

(ALL LINES WILL INCLUDE C BREAKS FOR SIDE ROADS)
STA. 143+00 TO 143+67, SOLID LT & RT
STA. 143+80, DOUBLE SOLID RT (BERLIN STREET)
STA. 146+20, SOLID RT (SLIP RAMP)
STA. 144+66 TO 148+00, SOLID LT & RT

646.442 DURABLE 8 INCH WHITE LINE, THERMOPLASTIC

STA. 144+66 TO 145+25, SOLID DIAGONALS RT

646.482 DURABLE 24 INCH STOP BAR, THERMOPLASTIC

STA. 143+67, RT
STA. 144+30, LT (GRANITE STREET)
STA. 144+66, LT
STA. 145+40, RT (BERLIN STREET)
STA. 146+10, RT (SLIP RAMP)

646.492 DURABLE LETTER OR SYMBOL, THERMOPLASTIC

STA. 143+57, RT - ARROW
STA. 146+03, RT - "STOP"

646.502 DURABLE CROSSWALK MARKING, THERMOPLASTIC

STA. 144+10, LT TO 144+25, RT
STA. 145+25, RT (BERLIN STREET)
STA. 146+10, RT (SLIP RAMP)

646.602 TEMPORARY 4 INCH WHITE LINE, PAINT

(ALL LINES WILL INCLUDE EDGE LINE AND LANE LINE BREAKS AND RADIUS FOR SIDE ROADS)
STA. 143+00 TO 148+00, SOLID LT & RT
STA. 143+00 TO 143+67, SOLID RT
STA. 143+80, DOUBLE SOLID RT (BERLIN STREET)
STA. 144+30, DOUBLE SOLID LT (GRANITE STREET)
STA. 146+20, RT (SLIP RAMP)

STA. 144+75, LT - ARROW - "ONLY"
STA. 145+50, LT - ARROW - "ONLY"

646.612 TEMPORARY 4 INCH YELLOW LINE, PAINT

(ALL LINES WILL INCLUDE C BREAKS FOR SIDE ROADS)
STA. 143+00 TO 143+67, SOLID LT & RT
STA. 143+80, DOUBLE SOLID RT (BERLIN STREET)
STA. 146+20, SOLID RT (SLIP RAMP)
STA. 144+66 TO 148+00, SOLID LT & RT

646.642 TEMPORARY 8 INCH WHITE LINE, PAINT

STA. 144+66 TO 145+25, SOLID DIAGONALS RT

646.682 TEMPORARY 24 INCH STOP BAR, PAINT

STA. 143+67, RT
STA. 144+30, LT (GRANITE STREET)
STA. 144+66, LT
STA. 145+40, RT (BERLIN STREET)
STA. 146+10, RT (SLIP RAMP)

646.692 TEMPORARY LETTER OR SYMBOL, PAINT

STA. 143+57, RT - ARROW

646.702 TEMPORARY CROSSWALK MARKING, PAINT

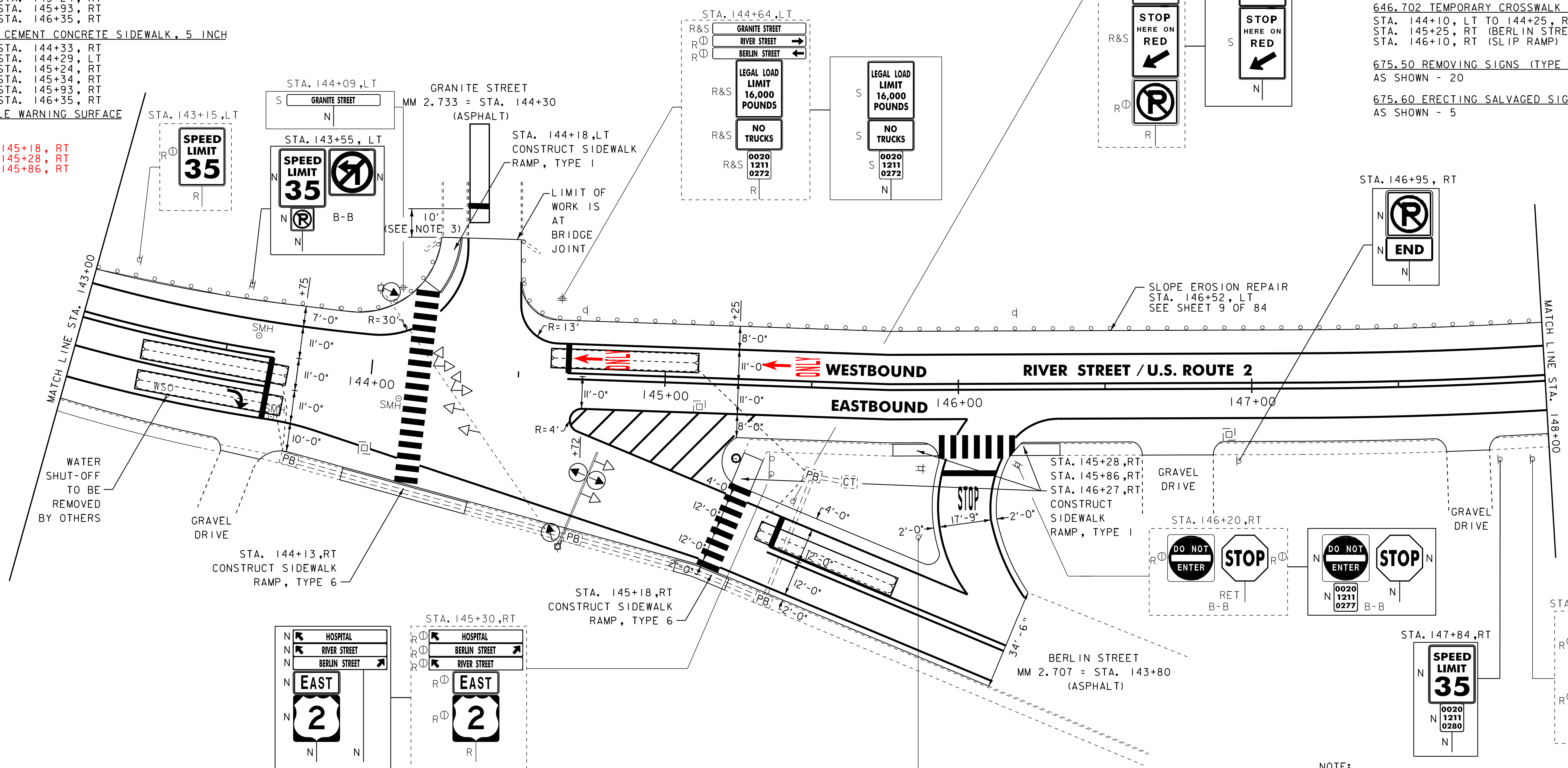
STA. 144+10, LT TO 144+25, RT
STA. 145+25, RT (BERLIN STREET)
STA. 146+10, RT (SLIP RAMP)

675.50 REMOVING SIGNS (TYPE A)

AS SHOWN - 20

675.60 ERECTING SALVAGED SIGNS

AS SHOWN - 5



- NOTE:
1. FOR LEGENDS, SEE LAYOUT SHEET #1.
 2. ALL EXISTING SIGNS NOT SHOWN SHALL BE RETAINED AS DIRECTED BY THE RESIDENT ENGINEER.
 3. PLACE NEW STOP BAR (GRANITE STREET) 10 FEET BACK FROM BRIDGE JOINT.

NOT TO SCALE

PROJECT LAYOUT SHEET #12



PROJECT NAME: MONTPELIER	PLOT DATE: 03-AUG-2011 14:08
PROJECT NUMBER: NH 2604(1)	DRAWN BY: STANTEC
FILE NAME: p06b034.dgn	CHECKED BY: JLL
PROJECT LEADER: JLL	SHEET 29 OF 84
DESIGNED BY: MCF	
IPARM FILE: p06b034i12.i	