

604.412, 604.415 OR 604.418 REHAB.
Dis. CBs OR MHS. CLASS I, II OR III

STA. 131+10, RT
STA. 132+41, RT
STA. 134+00, RT
STA. 135+46, RT
STA. 136+56, RT

604.42 CHANGING ELEVATION OF SEWER MANHOLES
STA. 136+62, RT

616.28 CAST-IN-PLACE CONCRETE CURB, TYPE B

STA. 133+86 TO STA. 134+05, RT
STA. 134+90 TO STA. 135+07, RT

616.41 REMOVAL OF EXISTING CURB

STA. 133+86 TO STA. 134+05, RT
STA. 134+90 TO STA. 135+07, RT

618.10 PORTLAND CEMENT CONCRETE SIDEWALK, 5 INCH

STA. 133+86 TO STA. 134+15, RT
STA. 134+90 TO STA. 135+07, RT

618.30 DETECTABLE WARNING SURFACE

STA. 134+04, RT
STA. 134+90, RT

629.20 ADJUST ELEVATION OF VALVE BOX

STA. 133+30, RT
STA. 133+94, RT
STA. 134+08, RT
STA. 135+03, RT
STA. 135+81, RT

646.402 DURABLE 4 INCH WHITE LINE, THERMOPLASTIC

STA. 131+00 TO 137+00, SOLID LT & RT
(EDGE LINE BREAKS AND RADIUS FOR SIDE ROADS)
STA. 131+00 TO 137+00, DASHED RT
STA. 133+72, DOUBLE SOLID RT (HILL STREET)

646.412 DURABLE 4 INCH YELLOW LINE, THERMOPLASTIC

(ALL LINES WILL INCLUDE C BREAKS FOR SIDE ROADS)
STA. 131+00 TO 137+00, SOLID LT & RT
STA. 133+72, DOUBLE SOLID RT (HILL STREET)

646.482 DURABLE 24 INCH STOP BAR, THERMOPLASTIC

STA. 133+72, RT (HILL STREET)

646.492 DURABLE LETTER OR SYMBOL, THERMOPLASTIC

STA. 133+95, RT - "STOP"

646.502 DURABLE CROSSWALK MARKING, THERMOPLASTIC

STA. 134+50, RT

646.602 TEMPORARY 4 INCH WHITE LINE, PAINT

STA. 131+00 TO 137+00, SOLID LT & RT
(EDGE LINE BREAKS AND RADIUS FOR SIDE ROADS)
STA. 131+00 TO 137+00, DASHED RT
STA. 133+72, DOUBLE SOLID RT (HILL STREET)

646.612 TEMPORARY 4 INCH YELLOW LINE, PAINT

(ALL LINES WILL INCLUDE C BREAKS FOR SIDE ROADS)
STA. 131+00 TO 137+00, SOLID LT & RT
STA. 133+72, DOUBLE SOLID RT (HILL STREET)

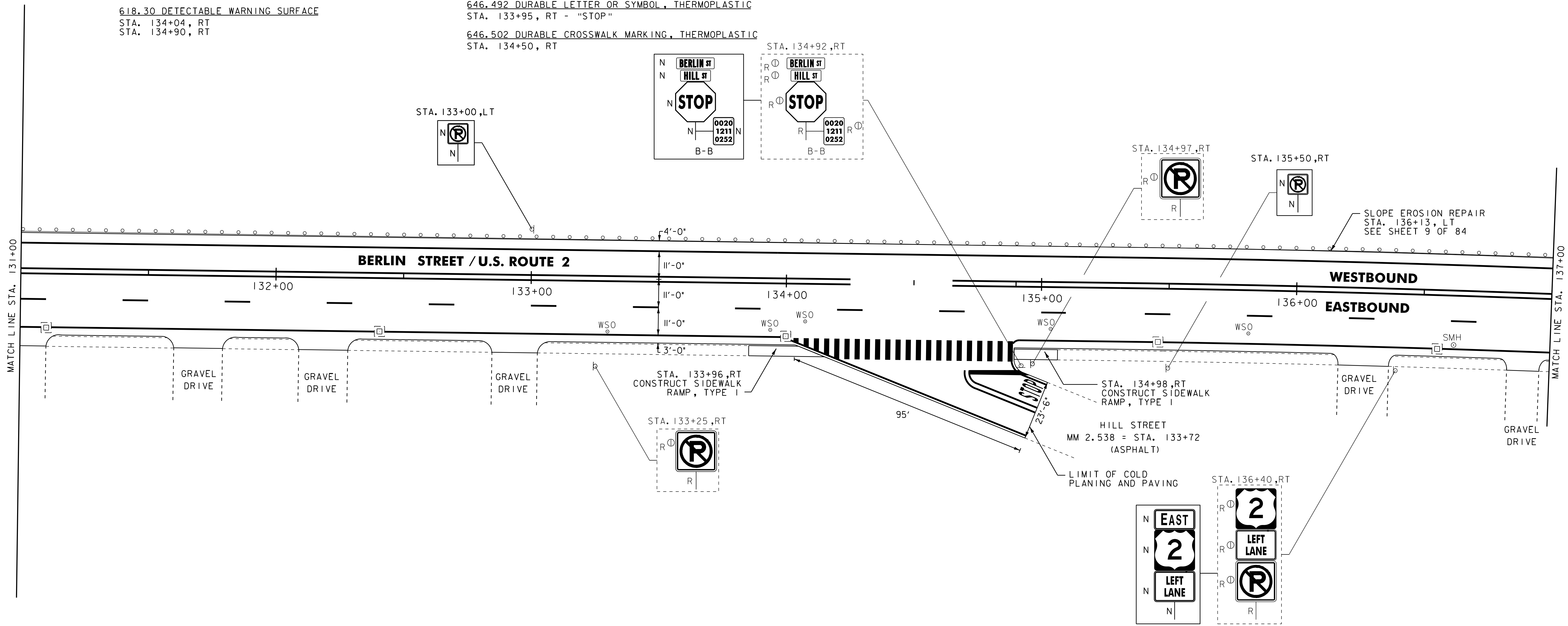
646.682 TEMPORARY 24 INCH STOP BAR, PAINT

STA. 133+72, RT (HILL STREET)

646.702 TEMPORARY CROSSWALK MARKING, PAINT

STA. 134+50, RT

675.50 REMOVING SIGNS (TYPE A)
AS SHOWN - 9



NOTE:
1. FOR LEGENDS, SEE LAYOUT SHEET #1.
2. ALL EXISTING SIGNS NOT SHOWN SHALL BE
RETAINED AS DIRECTED BY THE RESIDENT ENGINEER.

NOT TO SCALE



**PROJECT
LAYOUT
SHEET #10**

PROJECT NAME: MONTPELIER	PLOT DATE: 03-AUG-2011 14:08
PROJECT NUMBER: NH 2604(1)	DRAWN BY: STANTEC
FILE NAME: p06b034.dgn	CHECKED BY: JLL
PROJECT LEADER: JLL	SHEET 27 OF 84
DESIGNED BY: MCF	
IPARM FILE: p06b034110.i	