

646.402 DURABLE 4 INCH WHITE LINE, THERMOPLASTIC
 STA. 86+80.32 TO 89+00, SOLID LT & RT
 STA. 86+80.32 TO 89+00, SOLID LT (LANE LINE)

646.602 TEMPORARY 4 INCH WHITE LINE, PAINT
 STA. 86+80.32 TO 89+00, SOLID LT & RT
 STA. 86+80.32 TO 89+00, SOLID LT (LANE LINE)

675.50 REMOVING SIGNS (TYPE A)
 AS SHOWN - 2

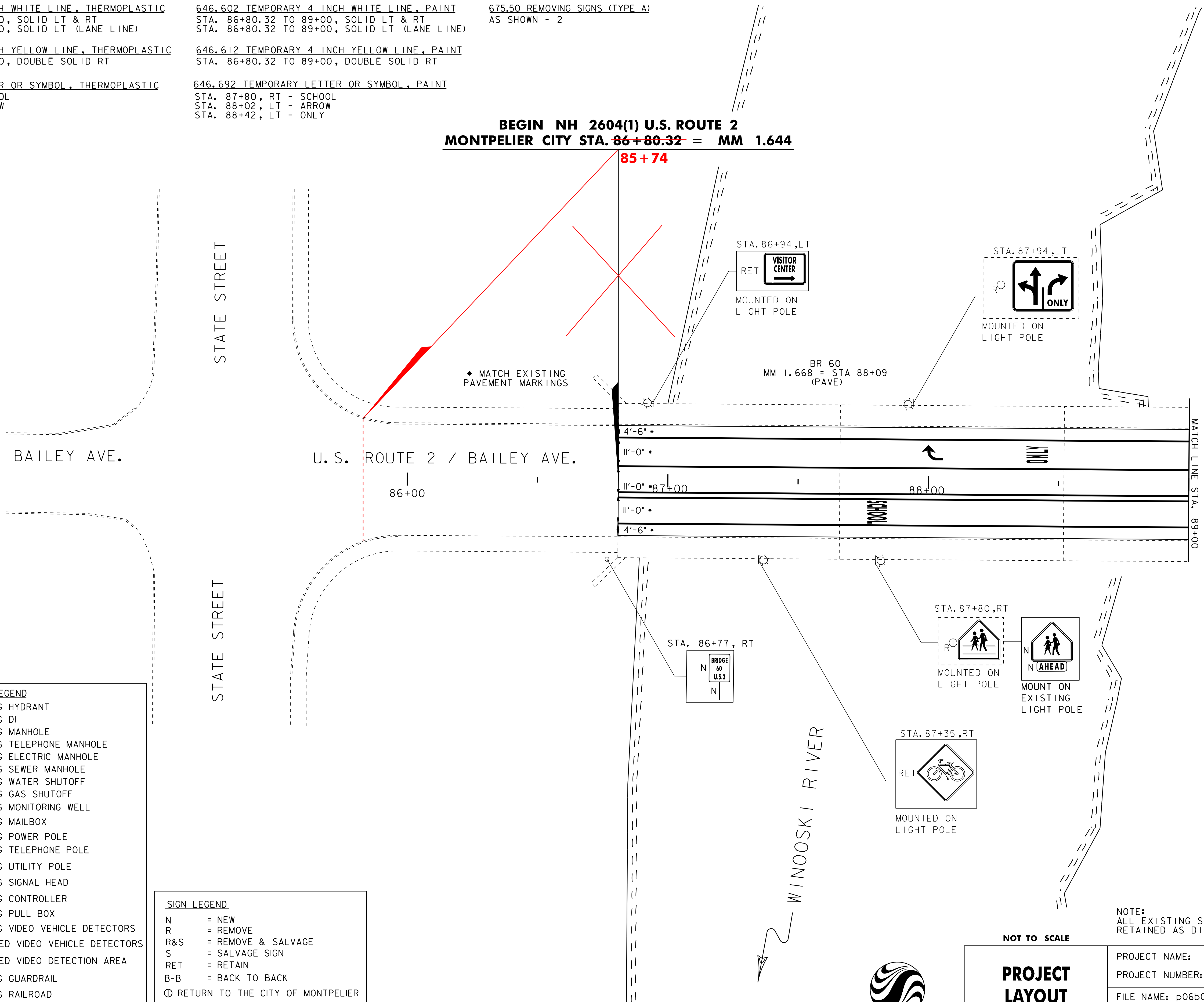
646.412 DURABLE 4 INCH YELLOW LINE, THERMOPLASTIC
 STA. 86+80.32 TO 89+00, DOUBLE SOLID RT

646.612 TEMPORARY 4 INCH YELLOW LINE, PAINT
 STA. 86+80.32 TO 89+00, DOUBLE SOLID RT

646.492 DURABLE LETTER OR SYMBOL, THERMOPLASTIC
 STA. 87+80, RT - SCHOOL
 STA. 88+02, LT - ARROW
 STA. 88+42, LT - ONLY

646.692 TEMPORARY LETTER OR SYMBOL, PAINT
 STA. 87+80, RT - SCHOOL
 STA. 88+02, LT - ARROW
 STA. 88+42, LT - ONLY

BEGIN NH 2604(1) U.S. ROUTE 2
MONTPELIER CITY STA. 86+80.32 = MM 1.644



UTILITY LEGEND	
	= EXISTING HYDRANT
	= EXISTING DI
	= EXISTING MANHOLE
	= EXISTING TELEPHONE MANHOLE
	= EXISTING ELECTRIC MANHOLE
	= EXISTING SEWER MANHOLE
	= EXISTING WATER SHUTOFF
	= EXISTING GAS SHUTOFF
	= EXISTING MONITORING WELL
	= EXISTING MAILBOX
	= EXISTING POWER POLE
	= EXISTING TELEPHONE POLE
	= EXISTING UTILITY POLE
	= EXISTING SIGNAL HEAD
	= EXISTING CONTROLLER
	= EXISTING PULL BOX
	= EXISTING VIDEO VEHICLE DETECTORS
	= PROPOSED VIDEO VEHICLE DETECTORS
	= PROPOSED VIDEO DETECTION AREA
	= EXISTING GUARDRAIL
	= EXISTING RAILROAD

SIGN LEGEND	
N	= NEW
R	= REMOVE
R&S	= REMOVE & SALVAGE
S	= SALVAGE SIGN
RET	= RETAIN
B-B	= BACK TO BACK
⊙	RETURN TO THE CITY OF MONTPELIER

NOTE:
 ALL EXISTING SIGNS NOT SHOWN SHALL BE
 RETAINED AS DIRECTED BY THE RESIDENT ENGINEER.

NOT TO SCALE



PROJECT LAYOUT SHEET #1

PROJECT NAME: MONTPELIER	PLOT DATE: 03-AUG-2011 4:07
PROJECT NUMBER: NH 2604(1)	DRAWN BY: STANTEC
FILE NAME: p06b034.dgn	CHECKED BY: JLL
PROJECT LEADER: JLL	SHEET 18 OF 84
DESIGNED BY: MCF	
IPARM FILE: p06b034i01.i	