

**INDEX OF SHEETS**

SEE SHEET 2

STATE OF VERMONT  
AGENCY OF TRANSPORTATION



PROPOSED IMPROVEMENT  
CLASS I TOWN HIGHWAY  
CITY OF MONTPELIER  
COUNTY OF WASHINGTON  
U.S. ROUTE 2 & U.S. ROUTE 302

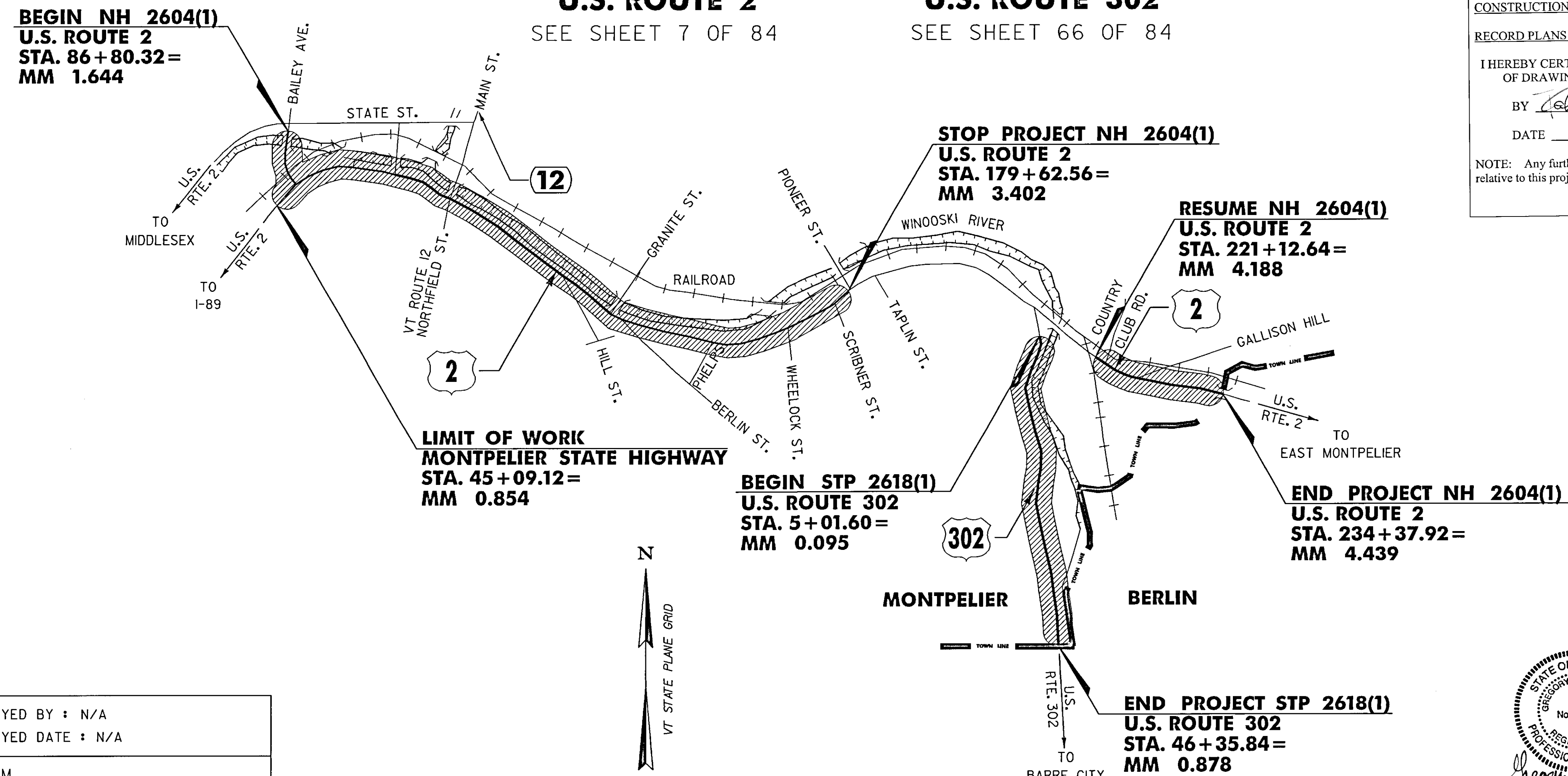
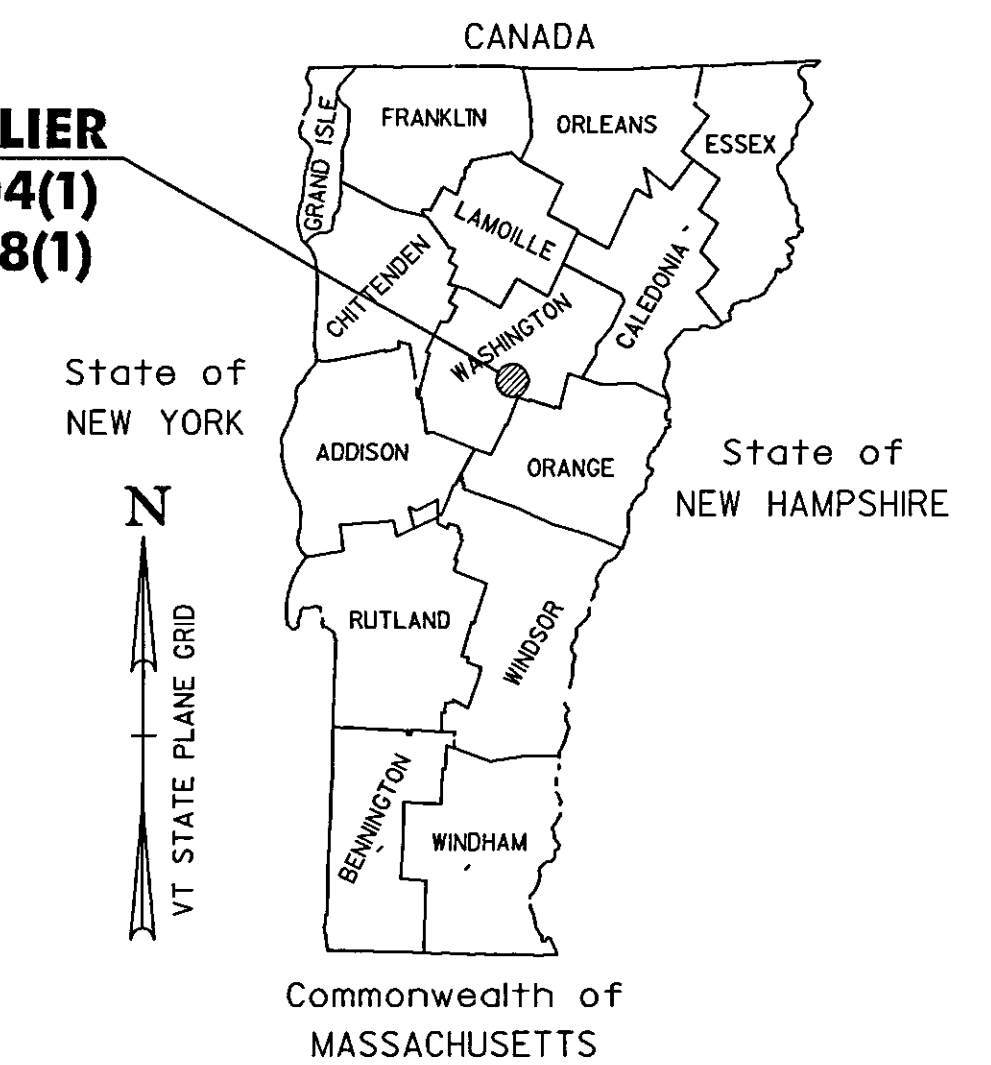
**MONTPELIER  
NH 2604(1)  
U.S. ROUTE 2**

SEE SHEET 7 OF 84

**MONTPELIER  
STP 2618(1)  
U.S. ROUTE 302**

SEE SHEET 66 OF 84

**MONTPELIER  
NH 2604(1)  
STP 2618(1)**



**RECORD PLANS**

CONTRACTOR: PIKE INDUSTRIES, INC. - BERLIN, VT

RESIDENT ENGINEER: ROBERT SUCKERT

CONSTRUCTION BEGAN: JUNE 9, 2009

CONSTRUCTION COMPLETE: OCTOBER 20, 2009

RECORD PLANS BY: ROBERT SUCKERT & AMOS KEMPTON

I HEREBY CERTIFY THAT ALL THE CONSTRUCTION REQUIRED BY THIS SET OF DRAWINGS HAS BEEN ACCOMPLISHED AS INDICATED HEREIN.

BY: *Robert Suckert* RESIDENT ENGINEER

DATE: 7-6-11

NOTE: Any further information concerning final quantities, amounts or other details relative to this project may be found at Central Files in the electronic archives.

**CONVENTIONAL SYMBOLS**

COUNTY LINE	
TOWN LINE	
LIMITS OF ACCESS	
POINT OF ACCESS	
FENCE LINE	
STONE WALL	
TRAVELED WAY	
GUARD RAIL	
RAILROAD	
SURVEY LINE	
CULVERT	
POWER POLE	
TELEPHONE POLE	
TREES	
CONTROL OF ACCESS	
PROPERTY LINE	
R.O.W. TAKING LINE	
SLOPE RIGHTS	
TOP OF CUT	
TOE OF SLOPE	

SURVEYED BY : N/A  
SURVEYED DATE : N/A

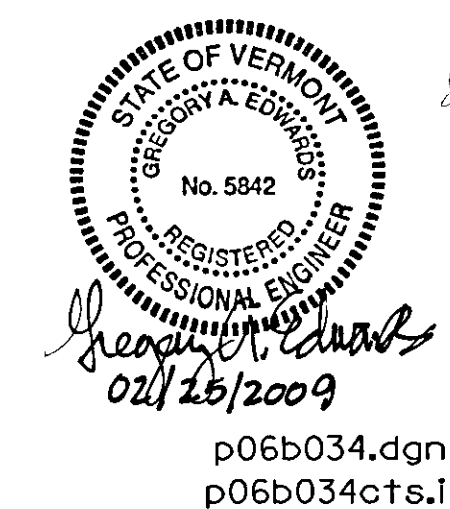
DATUM  
VERTICAL: N/A  
HORIZONTAL: N/A

RIGHT-OF-WAY LIMITS, IF APPLICABLE, ARE PROVIDED SOLELY FOR THE CONVENIENCE OF THE STATE AND ITS CONTRACTOR DURING THE COURSE OF THIS PAVING PROJECT. ANY REFERENCES TO OFFSETS ON THESE PLANS ARE APPROXIMATE AND SHOULD NOT BE RELIED UPON FOR ANY PURPOSES.

THESE PLANS ARE SUBJECT TO SUCH ENGINEERING CHANGES AS MAY BE REQUIRED BY THE FEDERAL HIGHWAY ADMINISTRATION OR THE DIRECTOR OF PROGRAM DEVELOPMENT.

CONSTRUCTION IS TO BE CARRIED ON IN ACCORDANCE WITH THESE PLANS AND THE STANDARD SPECIFICATIONS FOR CONSTRUCTION DATED 2006, AS APPROVED BY THE FEDERAL HIGHWAY ADMINISTRATION ON JUNE 15, 2006 FOR USE ON THIS PROJECT, INCLUDING ALL SUBSEQUENT REVISIONS AND SUCH REVISED SPECIFICATIONS AND SPECIAL PROVISIONS AS ARE INCORPORATED IN THESE PLANS.

UNLESS OTHERWISE NOTED, ALL DRAWINGS AND DETAILS ON THESE PLANS ARE DRAWN 'NOT TO SCALE'.



DIRECTOR OF PROGRAM DEVELOPMENT

APPROVED: *John V. Proulx* DATE: 3-9-2009

PROJECT MANAGER : TED DOMEY

PROJECT NAME : MONTPELIER

PROJECT NUMBER : NH 2604(1) & STP 2618(1)

SHEET 1 OF 84 SHEETS

p06b034.dgn  
p06b034cts.1