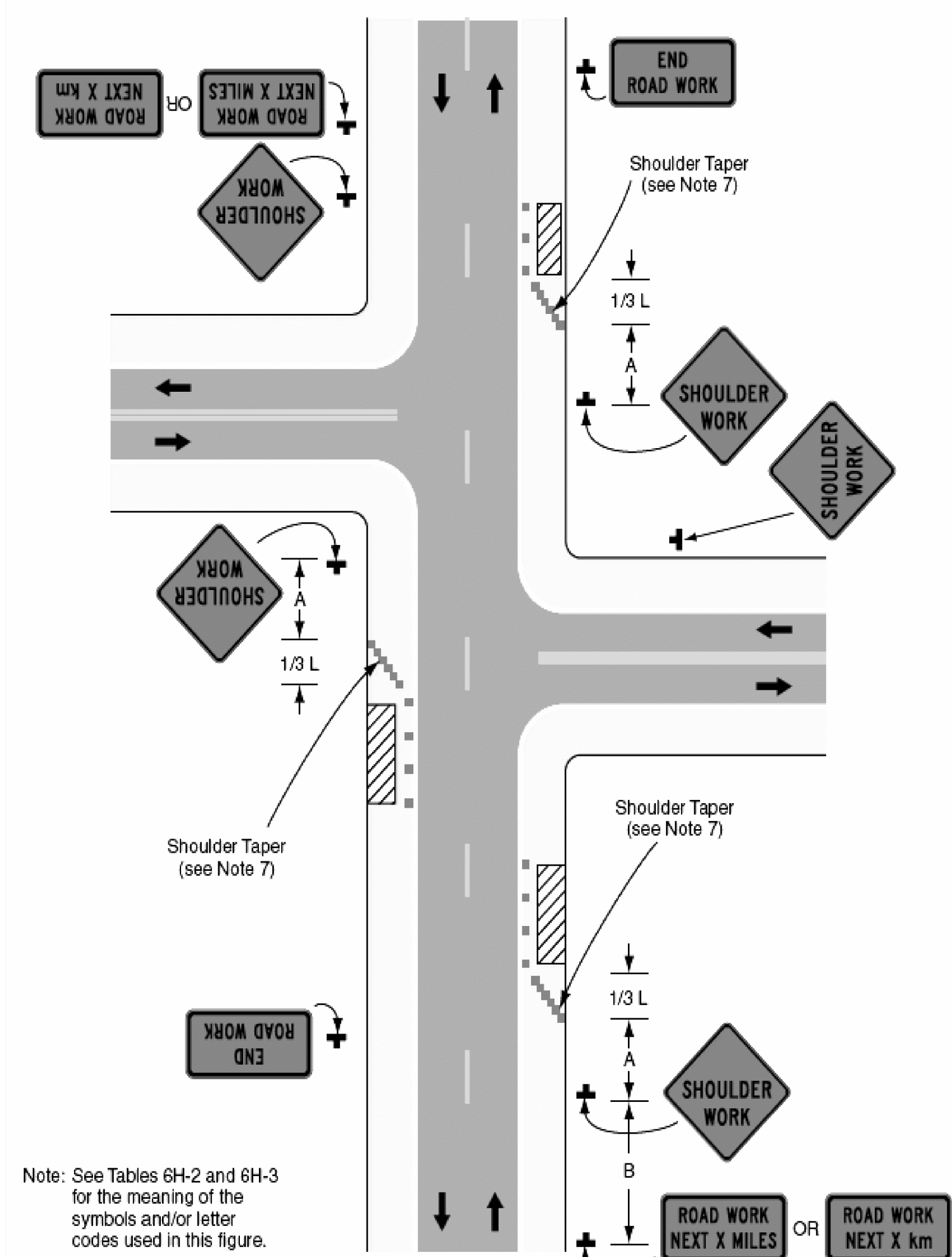
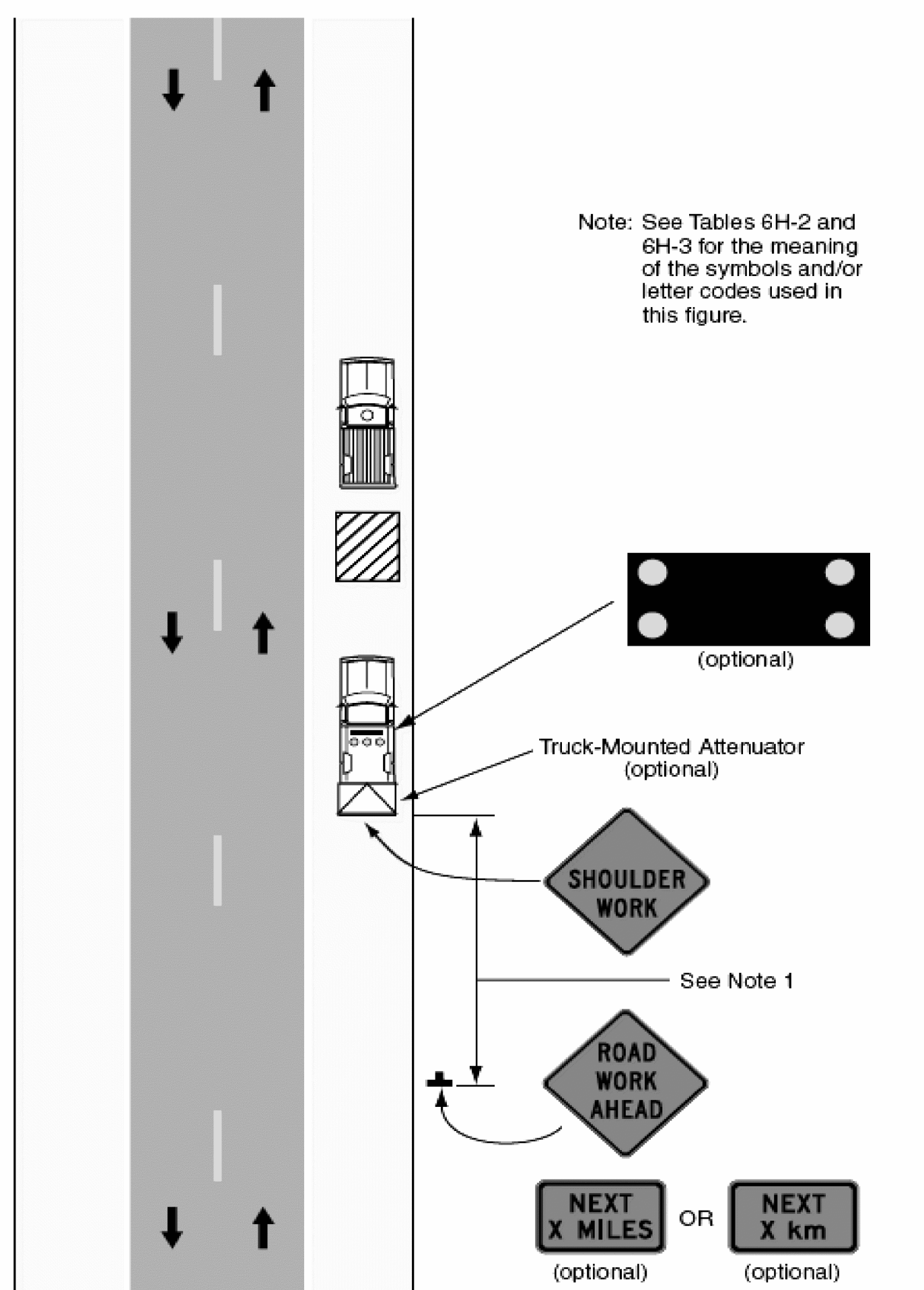


Figure 6H-3. Work on Shoulders (TA-3)



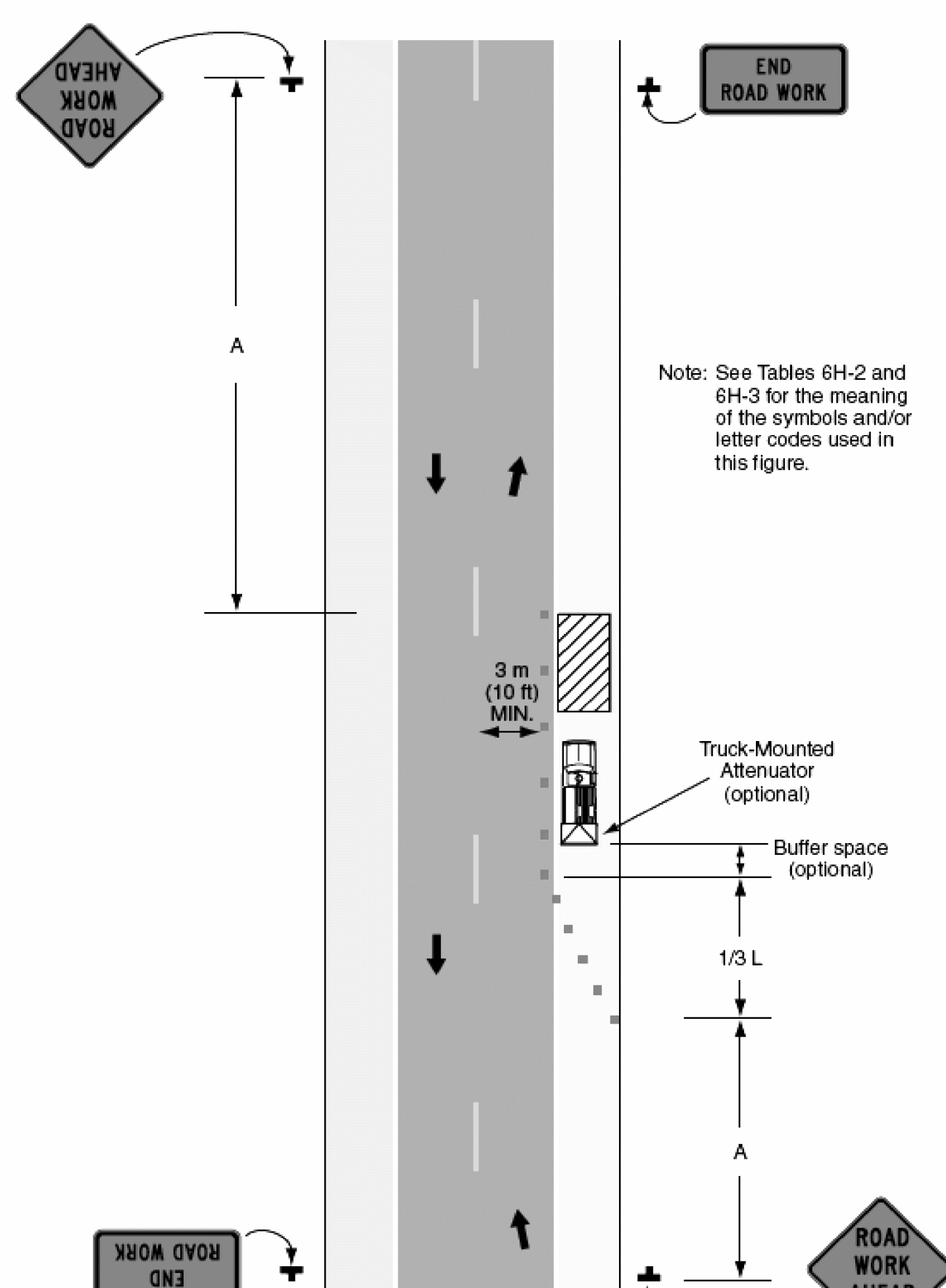
Typical Application 3

Figure 6H-4. Short-Duration or Mobile Operation on Shoulder (TA-4)



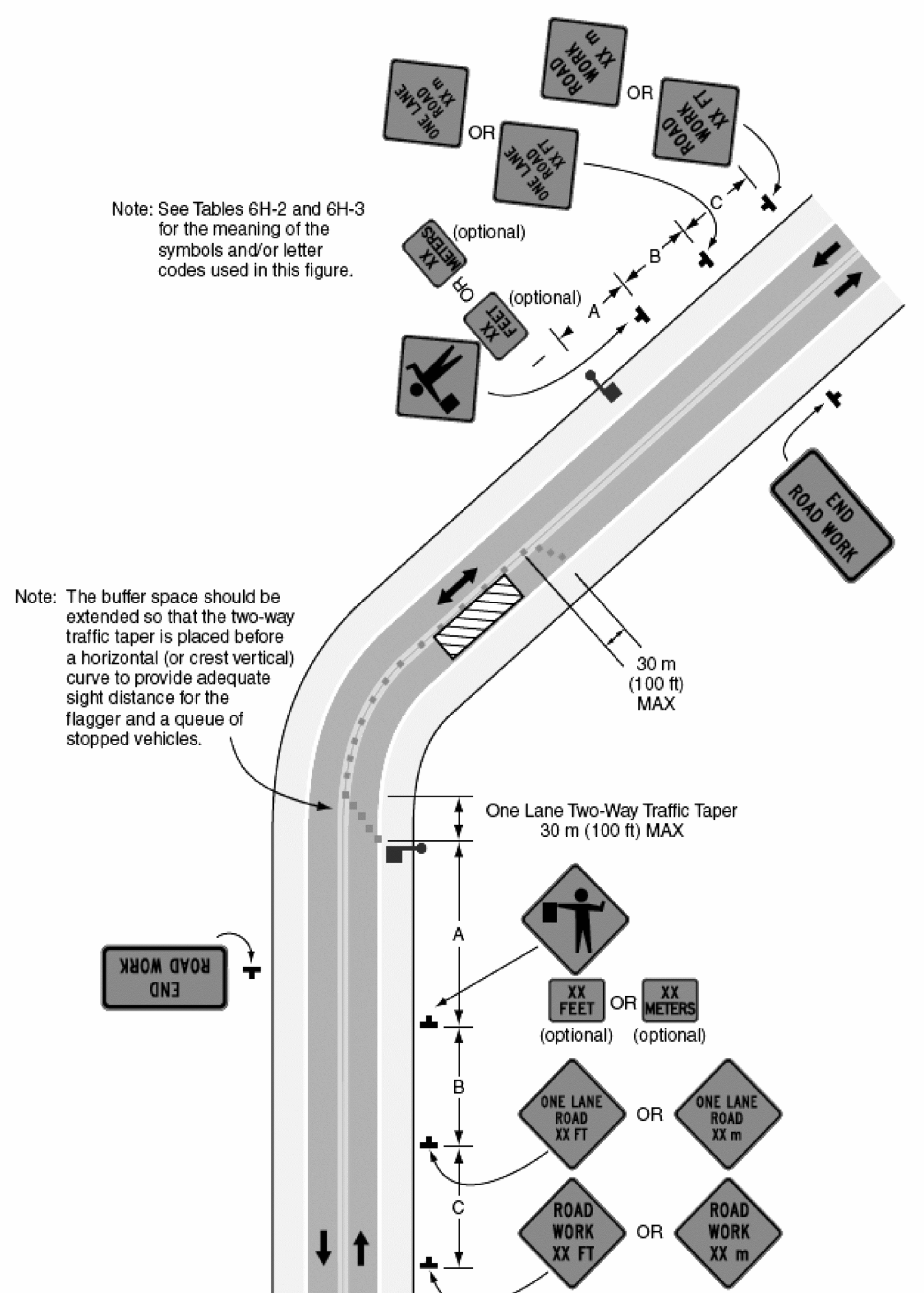
Typical Application 4

Figure 6H-6. Shoulder Work with Minor Encroachment (TA-6)



Typical Application 6

Figure 6H-10. Lane Closure on Two-Lane Road Using Flaggers (TA-10)



Typical Application 10

TEMPORARY TRAFFIC CONTROL NOTES

1. ALL TEMPORARY TRAFFIC CONTROL SHALL BE IN ACCORDANCE WITH THESE PROJECT PLANS, APPLICABLE VTRANS E-SERIES STANDARD DRAWINGS, AND THE MANUAL ON UNIFORM TRAFFIC CONTROL DEVICES (MUTCD), DATED 2003, AND ITS LATEST REVISIONS, OR AS DIRECTED BY THE RESIDENT ENGINEER. IF THE CONTRACTOR DOES NOT WISH TO FOLLOW THE TEMPORARY TRAFFIC CONTROL PROVIDED, HE/SHE MAY SUBMIT AN ALTERNATE PROPOSAL AT THE PRE-CONSTRUCTION MEETING IMPLEMENTING THE PROPOSED CHANGES FOR REVIEW AND APPROVAL BY THE RESIDENT ENGINEER.
2. THE CONTRACTOR MUST PROVIDE ACCESS THROUGH THE WORK ZONE FOR EMERGENCY VEHICLES AT ALL TIMES.
3. THE CONTRACTOR SHALL CONDUCT THE WORK AT ALL TIMES IN SUCH A MANNER AND IN SUCH SEQUENCE SO AS TO ENSURE THE LEAST INTERFERENCE WITH TRAFFIC OCCURS.
4. SIGNS SHALL ONLY BE VISIBLE TO MOTORIST AT THE TIMES WHEN THE MESSAGE IS PERTINENT, I.E. A "FLAGGER AHEAD" SIGN SHALL ONLY BE VISIBLE TO MOTORIST WHEN THE FLAGGER IS ACTUALLY PRESENT PERFORMING THEIR DUTIES.
5. PAYMENT FOR CONSTRUCTION SIGNING WILL BE MADE UNDER CONTRACT ITEM 641.10

PROJECT NAME: MANCHESTER-PAWLET  
 PROJECT NUMBER: STPG\_SIGN (14)

FILE NAME: STPG\_SIGN\_PROJECT.dgn PLOT DATE: 22-APR-2009 16:40  
 PROJECT LEADER: N. AVERY DRAWN BY: ROADWAY  
 DESIGNED BY: N. AVERY CHECKED BY:  
 TRAFFIC\_CONTROL\_DETAILS SHEET 60 OF 60

NOTE:  
 ALL TYPICAL APPLICATIONS TAKEN FROM PART #6  
 OF THE 2003 EDITION OF THE MANUAL ON UNIFORM  
 TRAFFIC CONTROL DEVICES