

Table 6H-2. Meaning of Symbols on Typical Application Diagrams

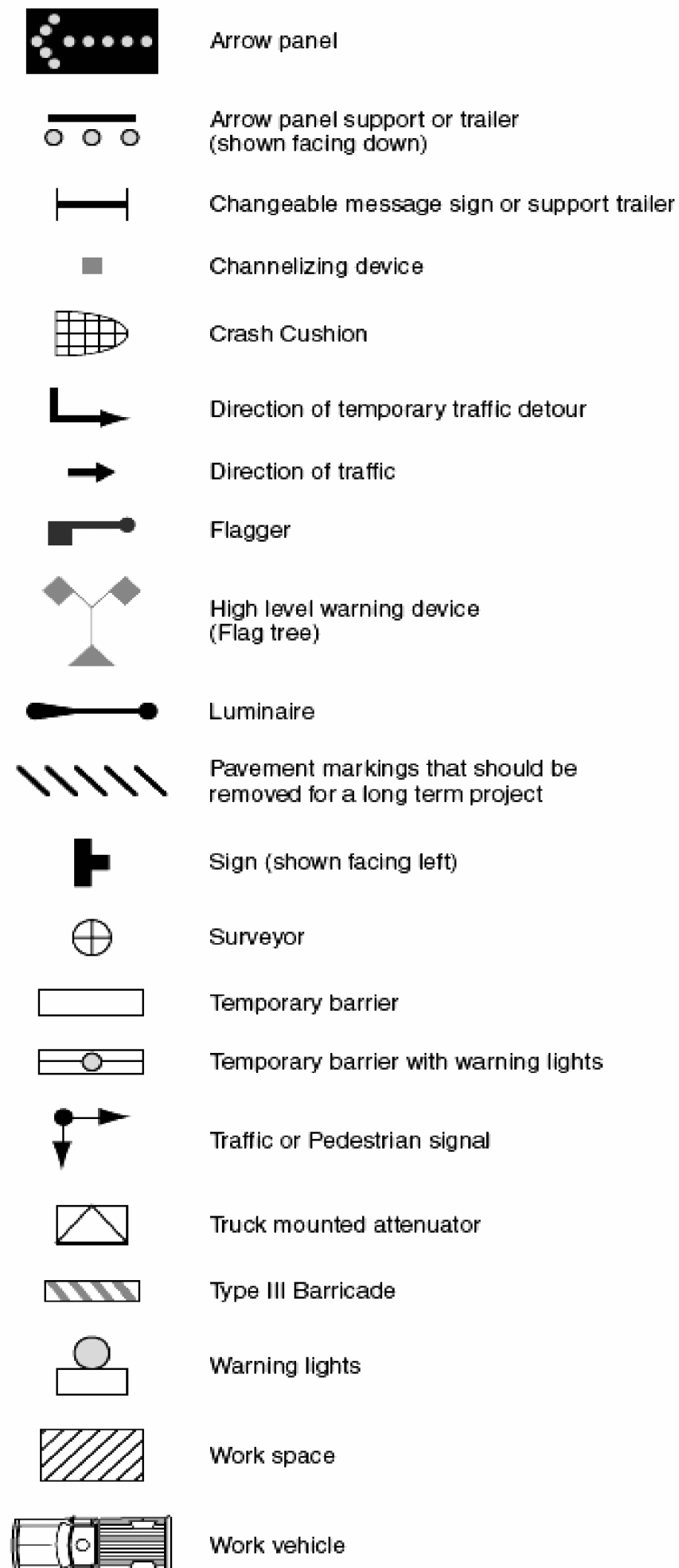


Figure 6E-1. Use of Hand-Signaling Devices by Flaggers

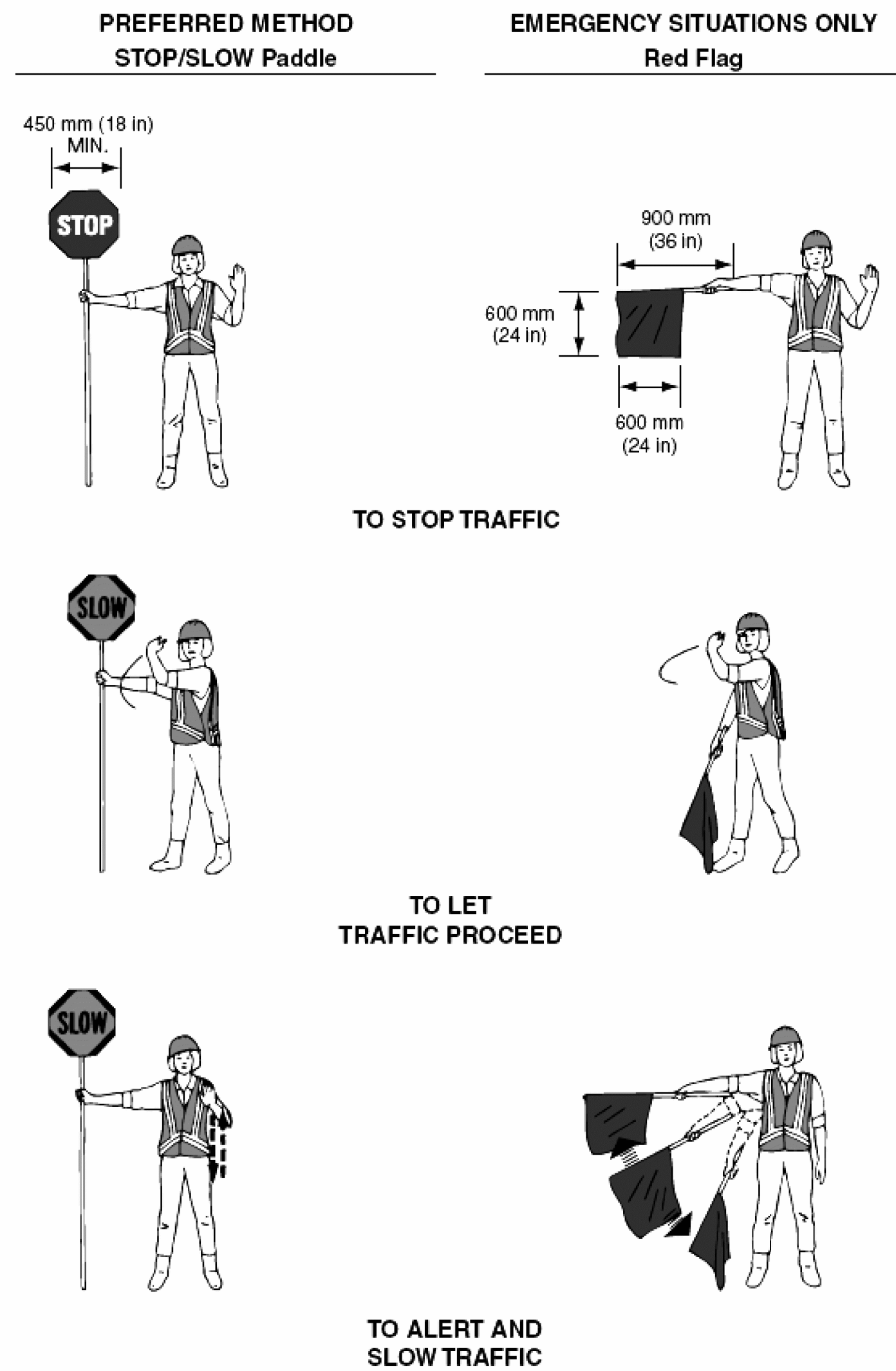


Figure 6C-2. Types of Tapers and Buffer Spaces

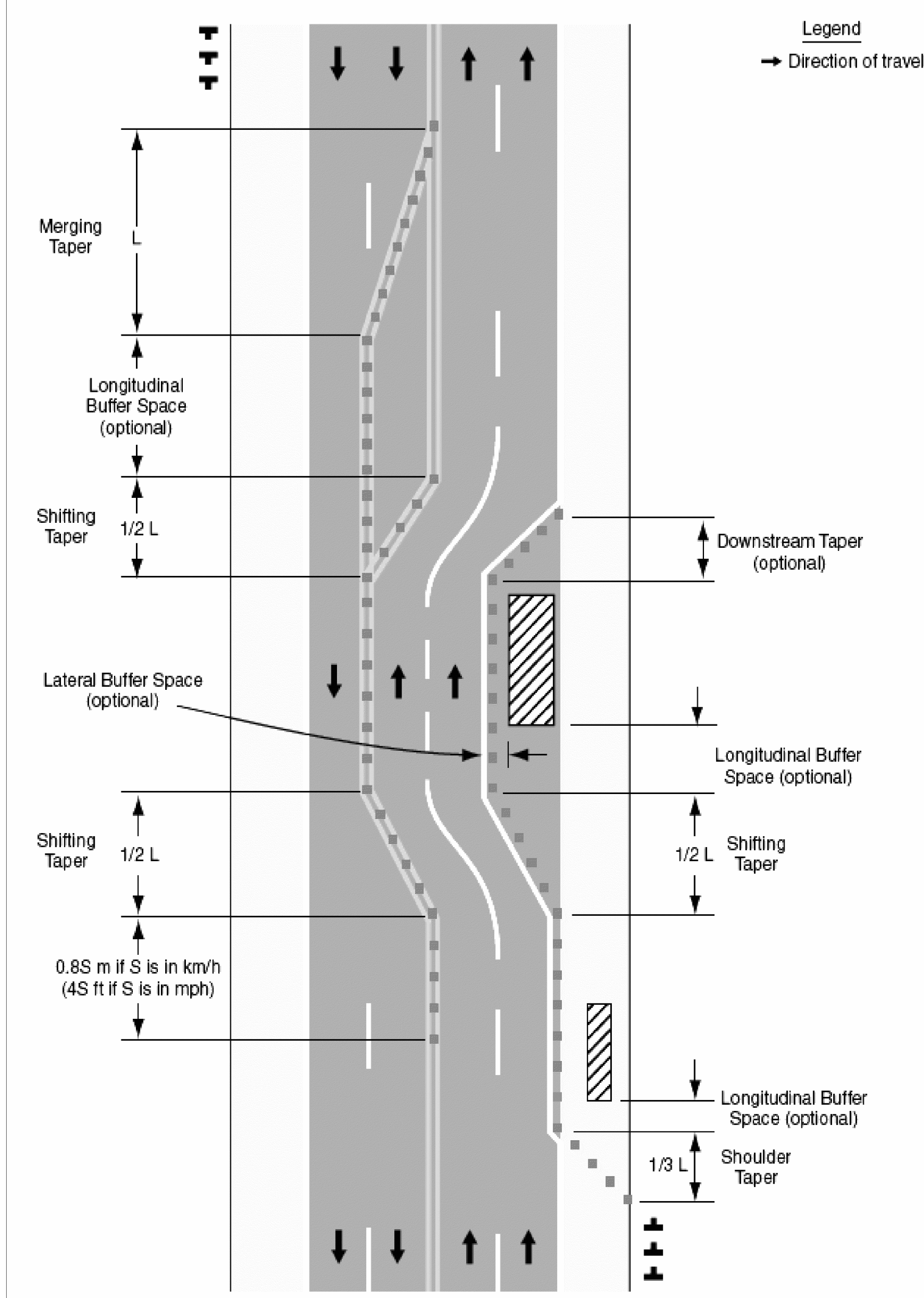


Figure 6H-1. Work Beyond the Shoulder (TA-1)

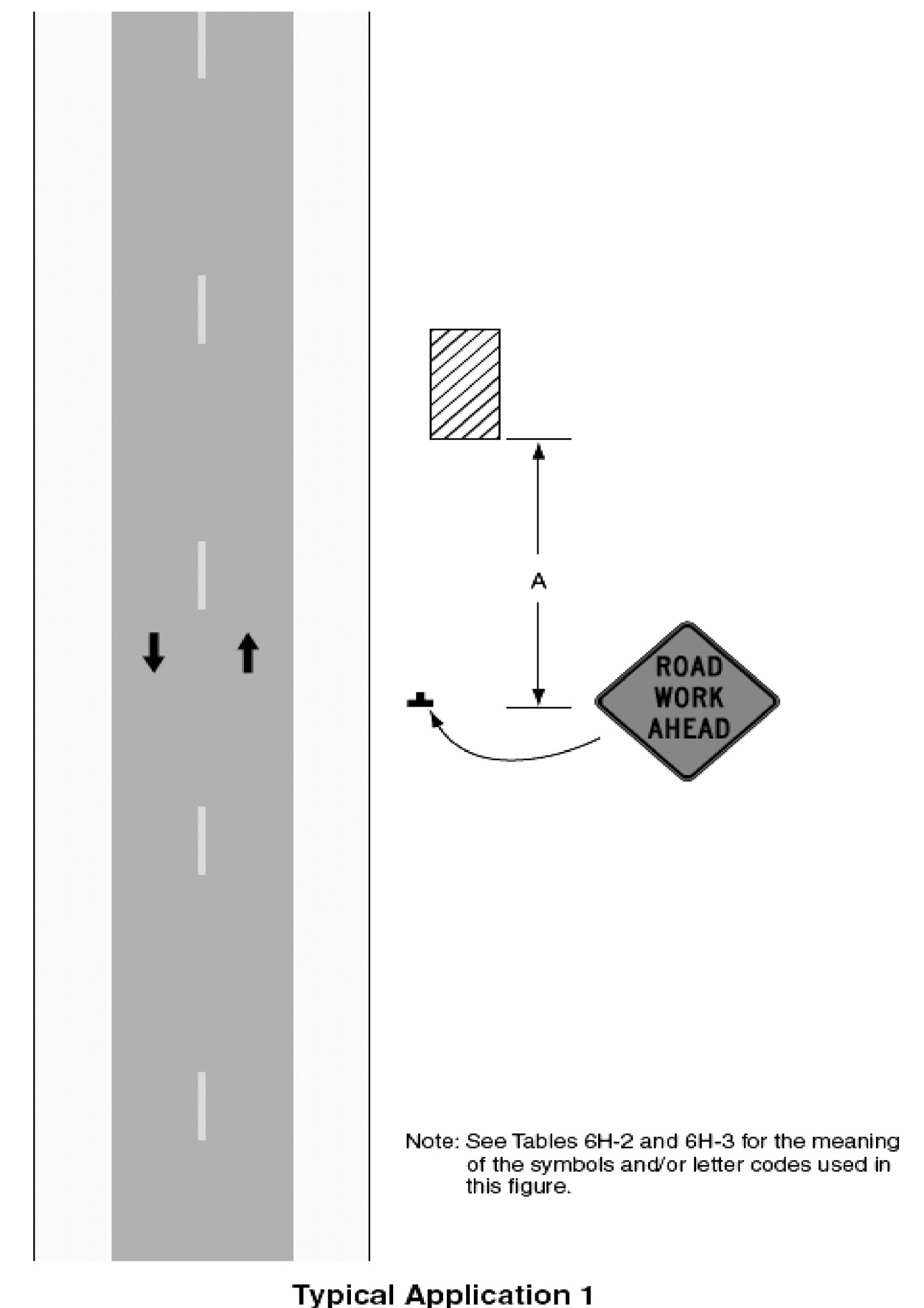


Table 6C-3. Taper Length Criteria for Temporary Traffic Control Zones

Type of Taper	Taper Length (L)*
Merging Taper	at least L
Shifting Taper	at least 0.5L
Shoulder Taper	at least 0.33L
One-Lane, Two-Way Traffic Taper	30 m (100 ft) maximum
Downstream Taper	30 m (100 ft) per lane

Table 6H-3. Meaning of Letter Codes on Typical Application Diagrams

Road Type	Distance Between Signs**		
	A	B	C
Urban (low speed)*	30 (100)	30 (100)	30 (100)
Urban (high speed)*	100 (350)	100 (350)	100 (350)
Rural	150 (500)	150 (500)	150 (500)
Expressway / Freeway	300 (1,000)	450 (1,500)	800 (2,640)

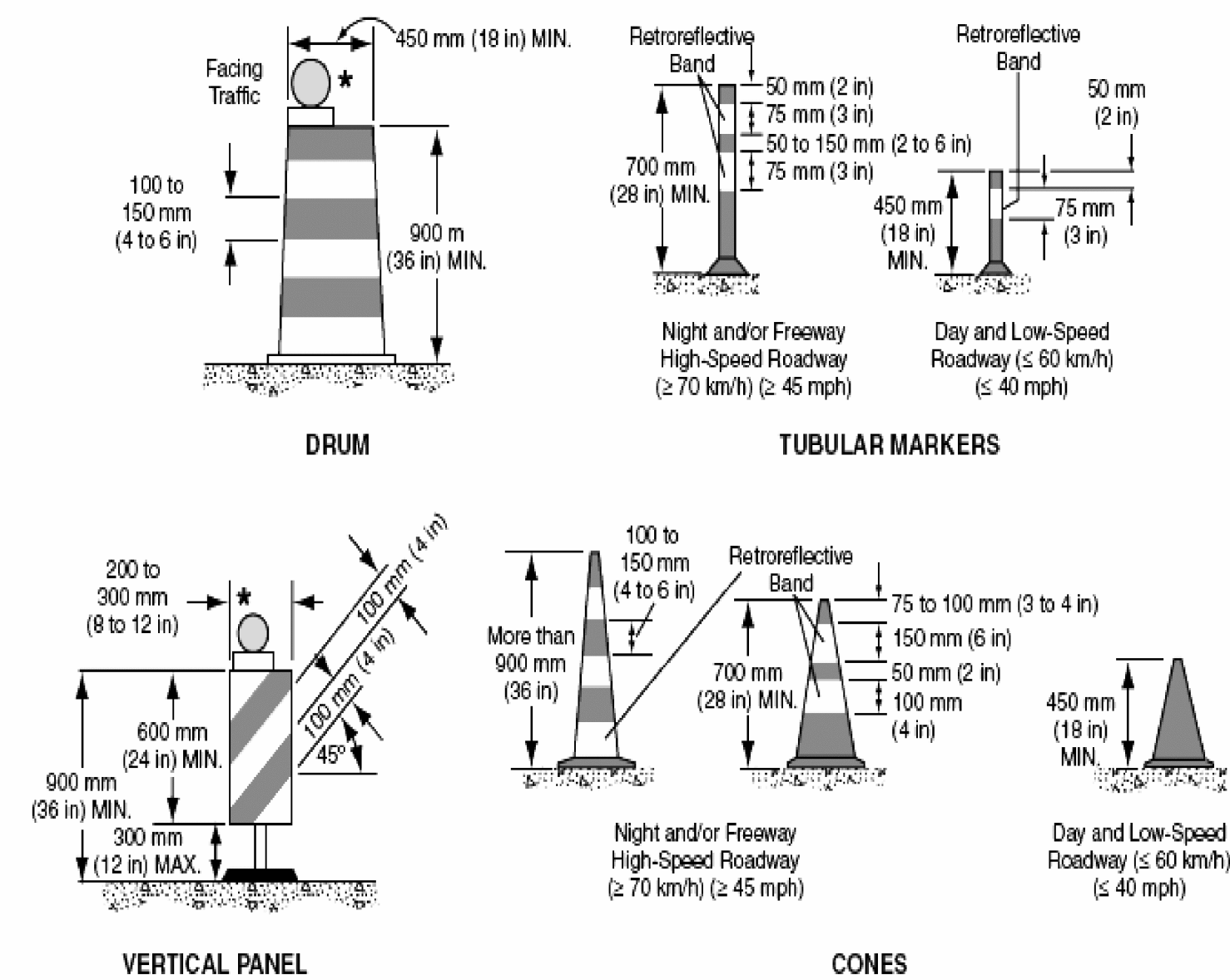
* Speed category to be determined by highway agency
 ** Distances are shown in meters (feet). The column headings A, B, and C are the dimensions shown in Figures shown on the Traffic Control Detail Sheets. The A dimension is the distance from the transition or point of restriction to the first sign. The B dimension is the distance between the first and second signs. The C dimension is the distance between the second and third signs. (The third sign is the first one in a three-sign series encountered by a driver approaching a TTC zone.)

Table 6C-4. Formulas for Determining Taper Lengths

Speed Limit (S)	Taper Length (L) Meters	Speed Limit (S)	Taper Length (L) Feet
60 km/h or less	$L = \frac{WS^2}{155}$	40 mph or less	$L = \frac{WS^2}{60}$
70 km/h or more	$L = \frac{WS}{1.6}$	45 mph or more	$L = WS$

Where: L = taper length in meters (feet)
 W = width of offset in meters (feet)
 S = posted speed limit, or off-peak 85th-percentile speed prior to work starting, or the anticipated operating speed in km/h (mph)

Figure 6F-7. Channelizing Devices (Sheet 1 of 2)



* Warning lights (optional)
 Note: If drums, cones, or tubular markers are used to channelize pedestrians, they shall be located such that there are no gaps between the bases of the devices, in order to create a continuous bottom, and the height of each individual drum, cone, or tubular marker shall be no less than 900 mm (36 in) to be detectable to users of long canes.

PROJECT NAME:	MANCHESTER-PAWLET	PLOT DATE:	22-APR-2009 16:45
PROJECT NUMBER:	STPG_SIGN_(14)	DRAWN BY:	ROADWAY
FILE NAME:	STPG_SIGN_PROJECT.dgn	DESIGNED BY:	N. AVERY
TRAFFIC CONTROL DETAILS		CHECKED BY:	
		SHEET	59 OF 60