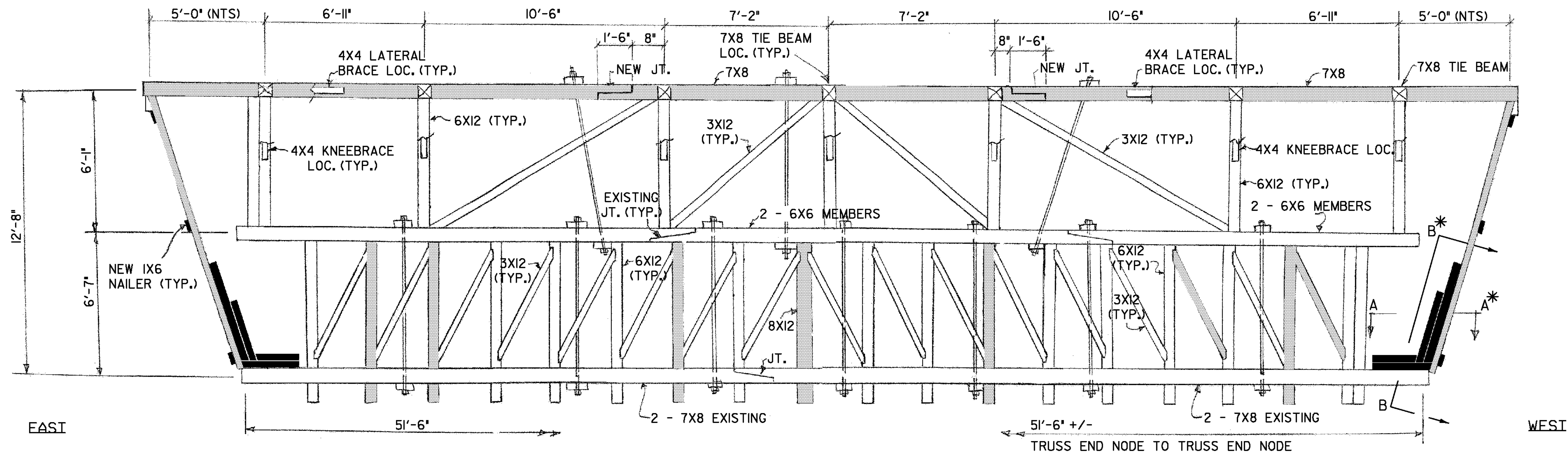


TRUSS ELEVATION (UPSTREAM) (FLOOR BEAMS NOT SHOWN)
 3/8" = 1'-0"

NOTE:
 PROVIDE REHABILITATED TRUSSES WITH 2" POSITIVE CAMBER @ MIDPOINT OF SPAN - UNLOADED CONDITION



TRUSS ELEVATION (DOWNSTREAM) (FLOOR BEAMS NOT SHOWN)
 3/8" = 1'-0"

NEW MEMBER
 REPLACE EXISTING MEMBER
 EXISTING MEMBER

*SEE SHEET 18 OF 27 FOR SECTION DETAILS

PROJECT NAME: RANDOLPH	PLOT DATE: 09-NOV-2010
PROJECT NUMBER: BHO 1444(53)	DRAWN BY: C. Weeber
FILE NAME: RandolphDetails.dgn	CHECKED BY: M. Sargent
PROJECT LEADER: M. Sargent	DESIGNED BY: J. Weaver
DESIGNED BY: J. Weaver	Truss Details
	SHEET 16 OF 27