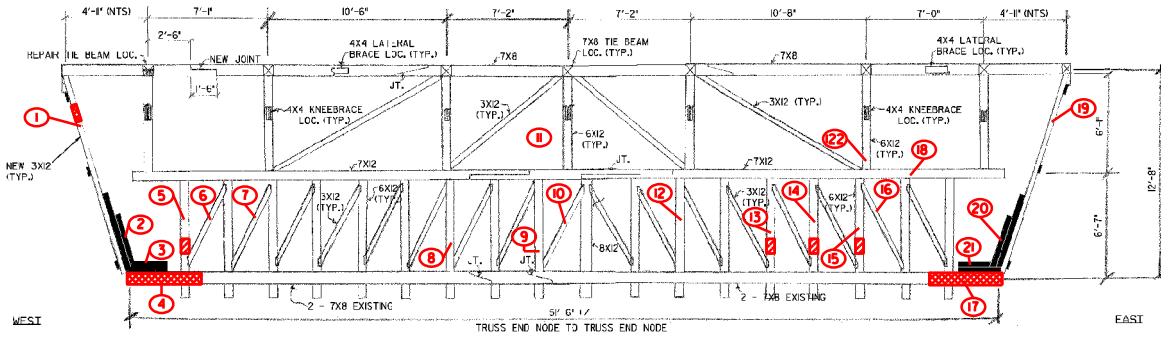
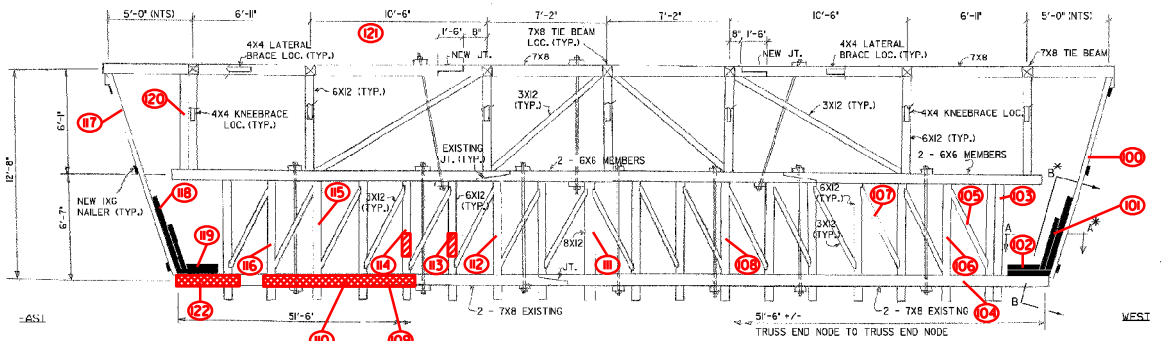


▨ CHANGE ORDER #1
▨ CHANGE ORDER #2



TRUSS ELEVATION (UPSTREAM) (FLOOR BEAMS NOT SHOWN)
 38' = 1'-0"

NOTE:
 PROVIDE REHABILITATED TRUSSES WITH 2" POSITIVE CAMBER @ MIDPOINT OF SPAN - UNLOADED CONDITION



TRUSS ELEVATION (DOWNSTREAM) (FLOOR BEAMS NOT SHOWN)
 38' = 1'-0"

■ NEW MEMBER
 ▨ REPLACE EXISTING MEMBER
 □ EXISTING MEMBER

*SEE SHEET 13 OF 27 FOR SECTION DETAILS

NOTE: I09 & I22 ARE ONE FULL TIMBER 32'-IN LENGTH HOWEVER BECAUSE OF CO #2 THEY ARE SPLIT INTO AN 8' + 24'

PROJECT NAME:	RANDOLPH		
PROJECT NUMBER:	BHO 1444(53)		
FILE NAME:	RandolphBHO1444.dwg	PLOT DATE:	09-NOV-2000
PROJECT LEADER:	M. Sargent	DRAWN BY:	C. Weaver
DESIGNED BY:	J. Weaver	CHECKED BY:	M. Sargent
Truss Details		SHEET 16	OF 27