

GPS CONTROL POINTS

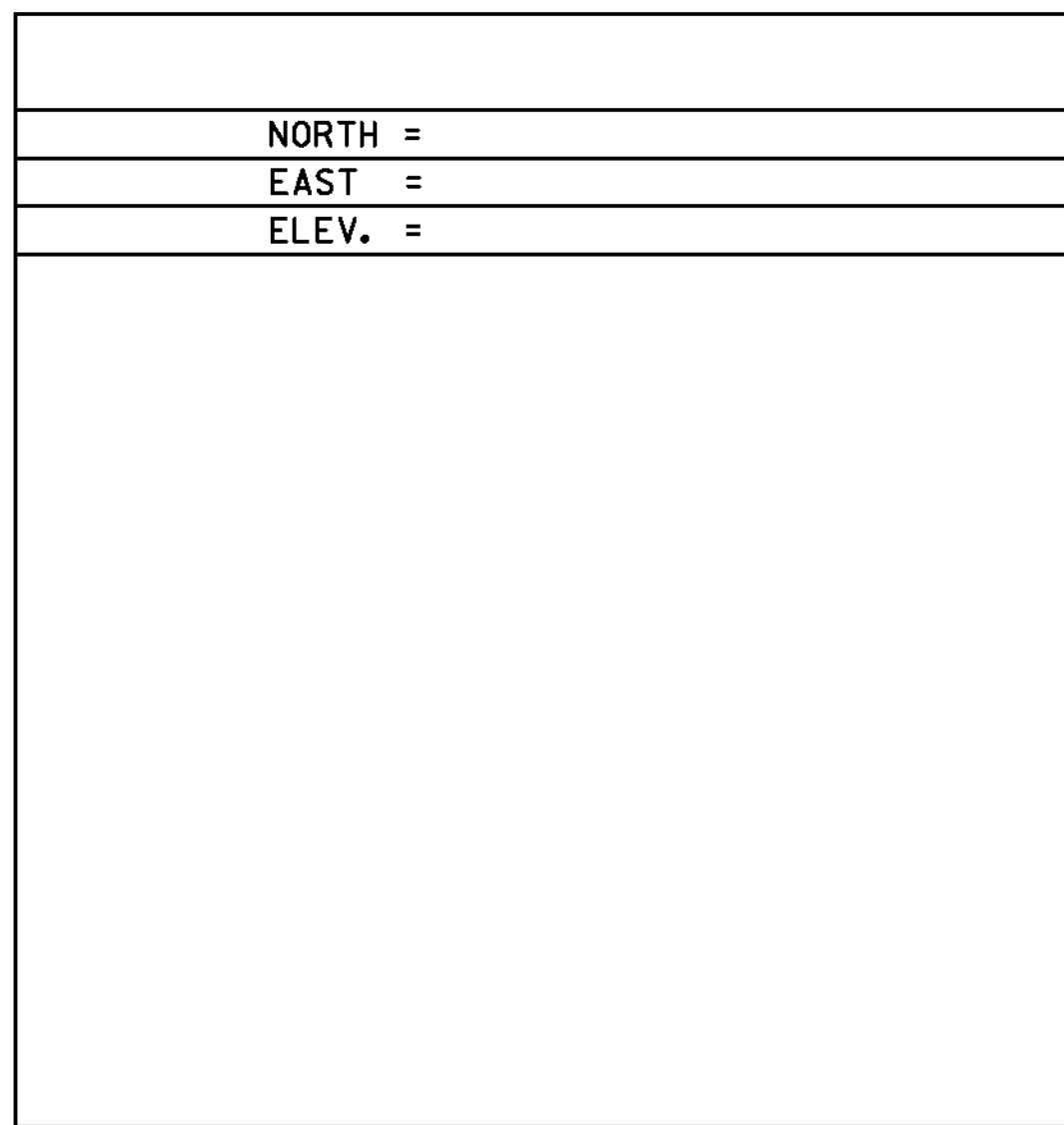
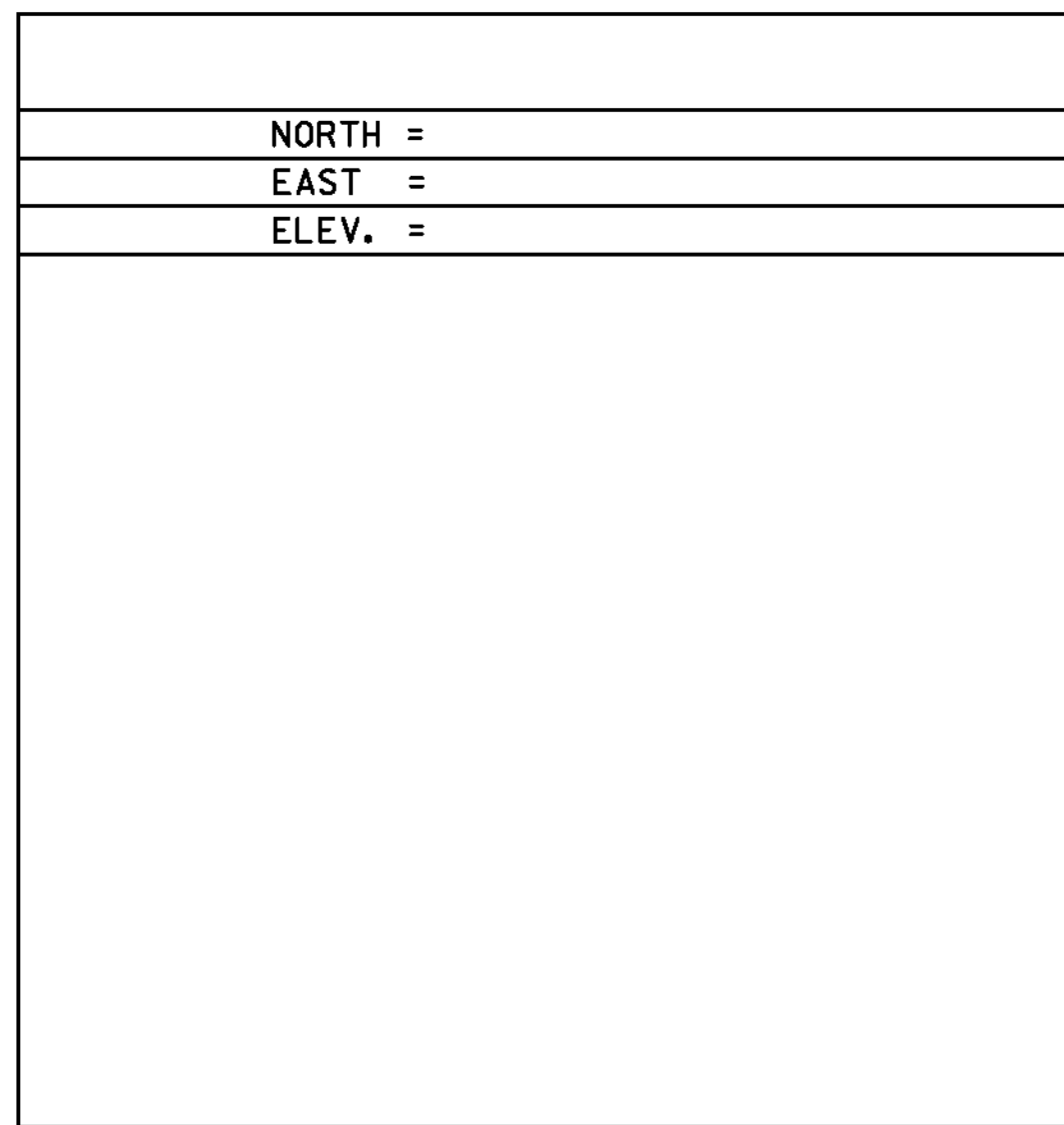
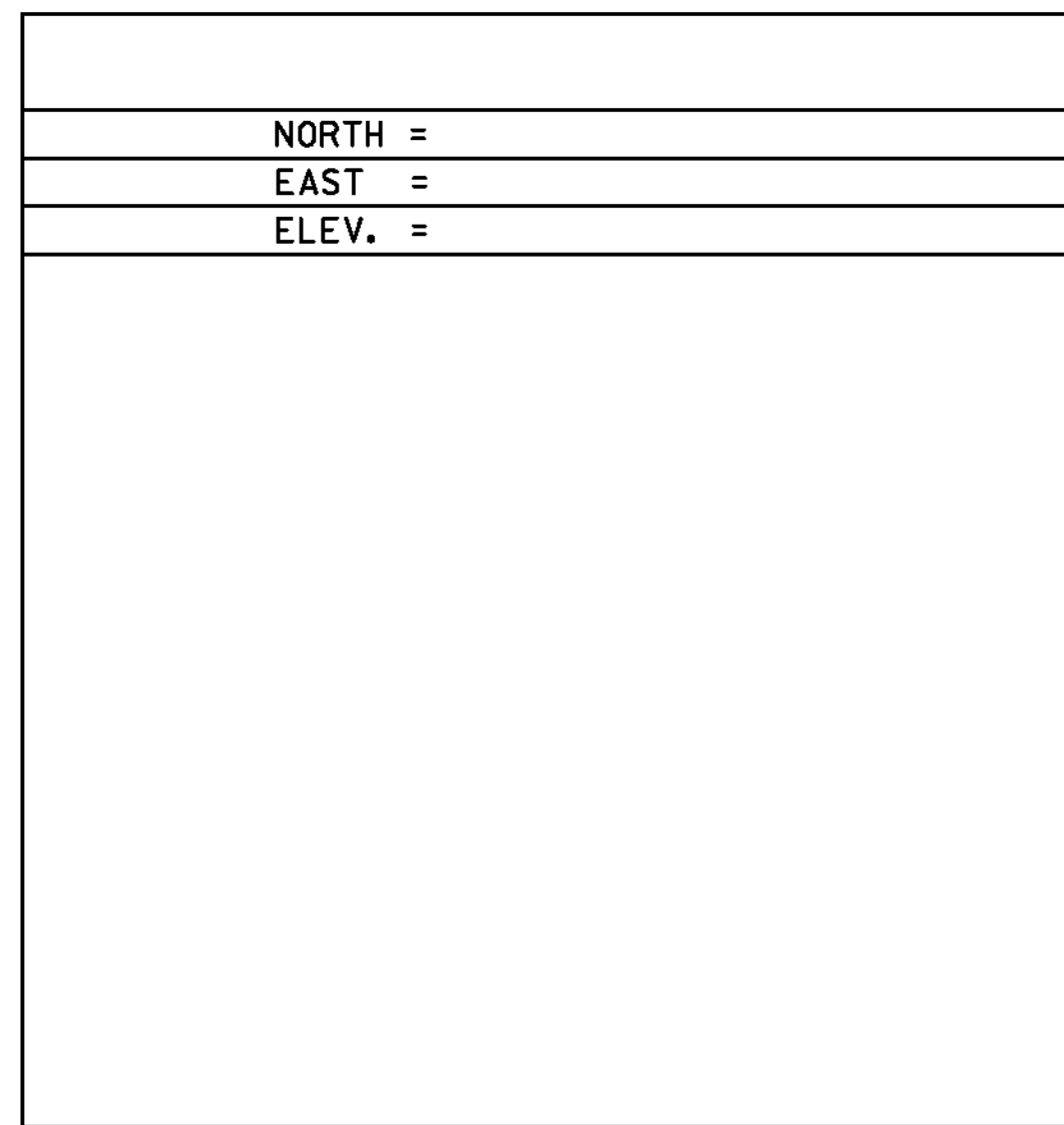
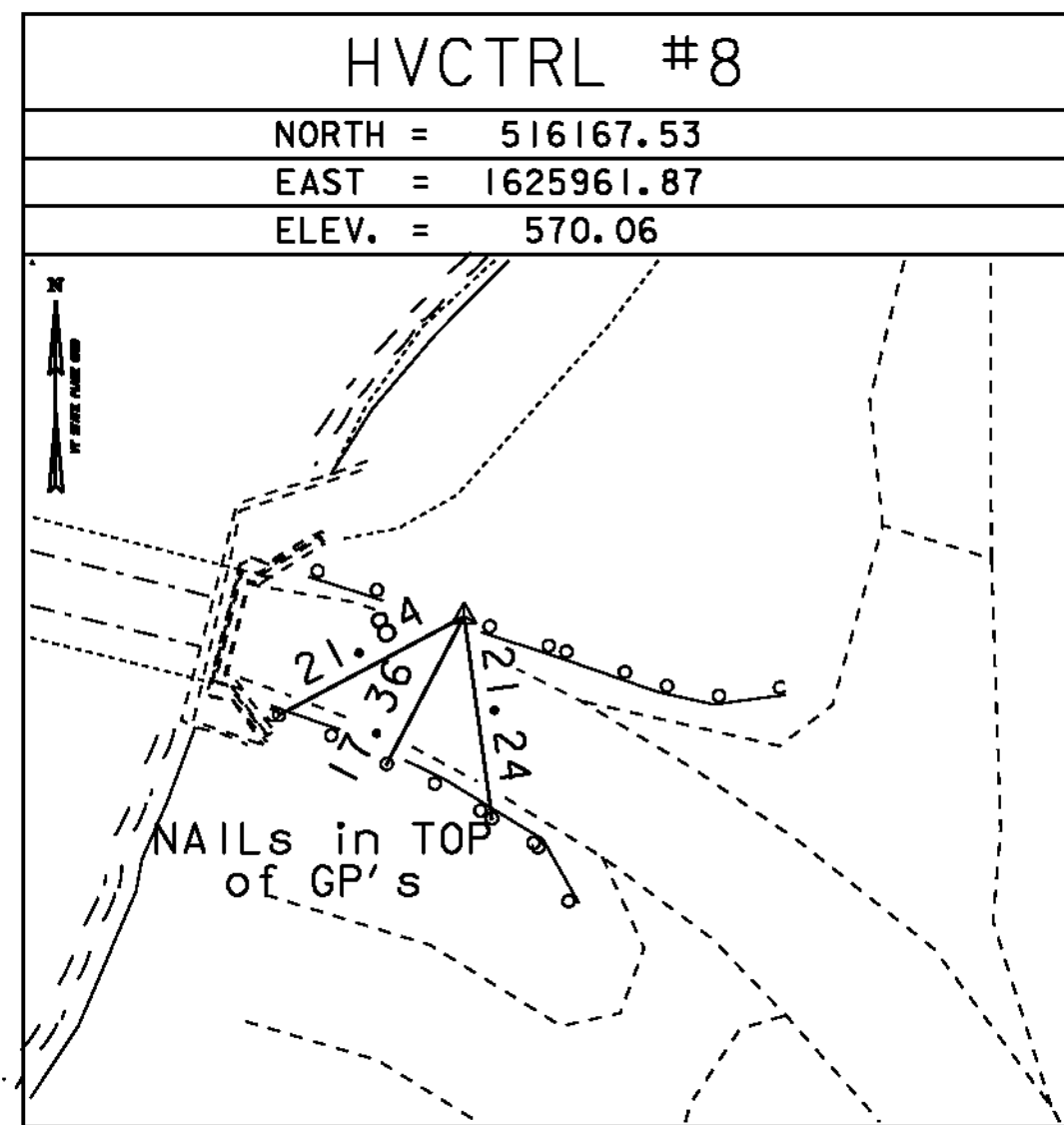
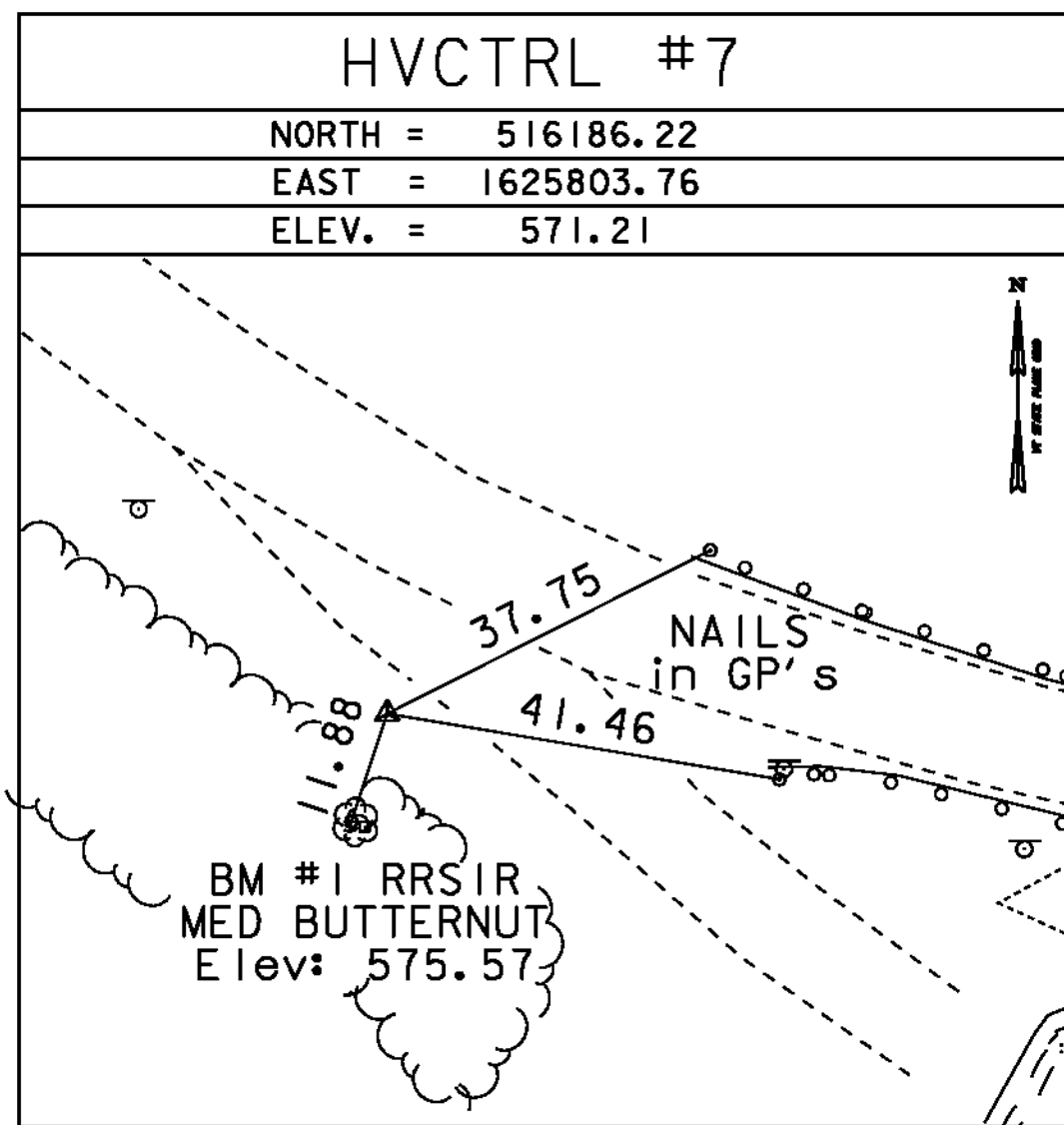
HVCTRL #1
 EAST RANDOLPH
 NORTH = 521893.79
 EAST = 1626547.81
 ELEV. = 657.60

GENERAL LOCATION, RANDOLPH, VT., JUST SOUTH OF EAST RANDOLPH. TO REACH FROM THE INTERSECTION OF VT ROUTE 14 AND VT ROUTE 66 IN EAST RANDOLPH GO SOUTH ALONG VT ROUTE 14 FOR 0.6 MI (1.0 KM) TO THE EAST RANDOLPH SCHOOL ON THE LEFT AND THE SITE OF THE MARK ON THE LEFT IN A LAWN IN FRONT OF THE SCHOOL. THE MARK IS SET 10 CM BELOW GROUND SURFACE IN THE TOP OF A 30 CM DIAMETER CONCRETE MONUMENT POURED 1.3 M (4.3 FT) DEEP. IT IS 6.7 M (22.0 FT) EAST OF AND ABOUT 0.1 M (0.3 FT) LOWER THAN THE CENTERLINE OF VT ROUTE 14, 13.0 M (42.7 FT) NORTH OF THE CENTERLINE OF THE MOST SOUTHERLY ENTRANCE DRIVE TO THE SCHOOL, 27.1 M (88.9 FT) WEST NORTHWEST OF THE SOUTHWEST CORNER OF THE SCHOOL BUILDING, AND 18.1 M (59.4 FT) SOUTHEAST OF POLE NO 61/20 AND A FIBERGLASS WITNESS POST.

HVCTRL #2
 EAST RANDOLPH AZ MK
 NORTH = 520093.26
 EAST = 1626438.54
 ELEV. = 647.11

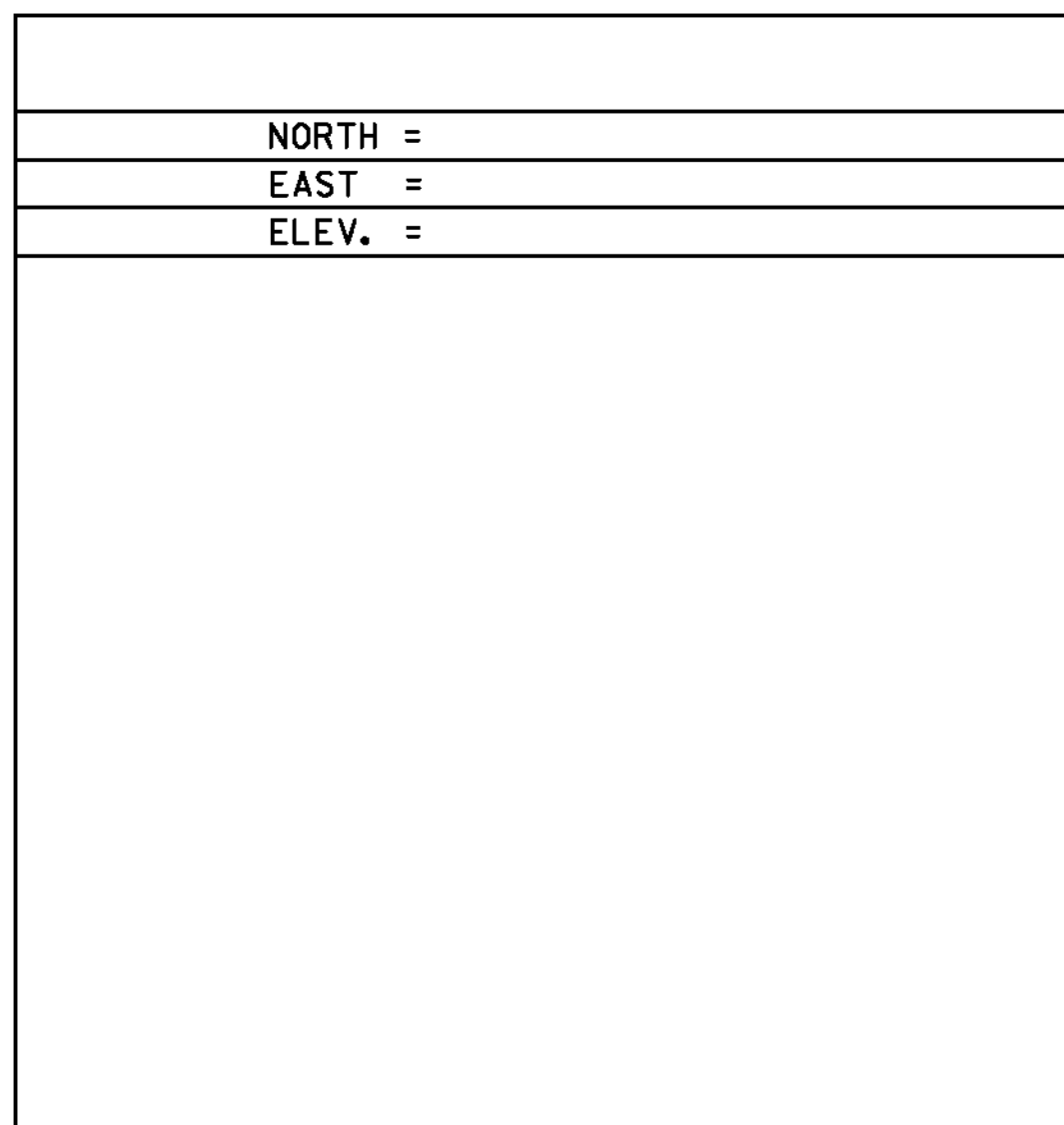
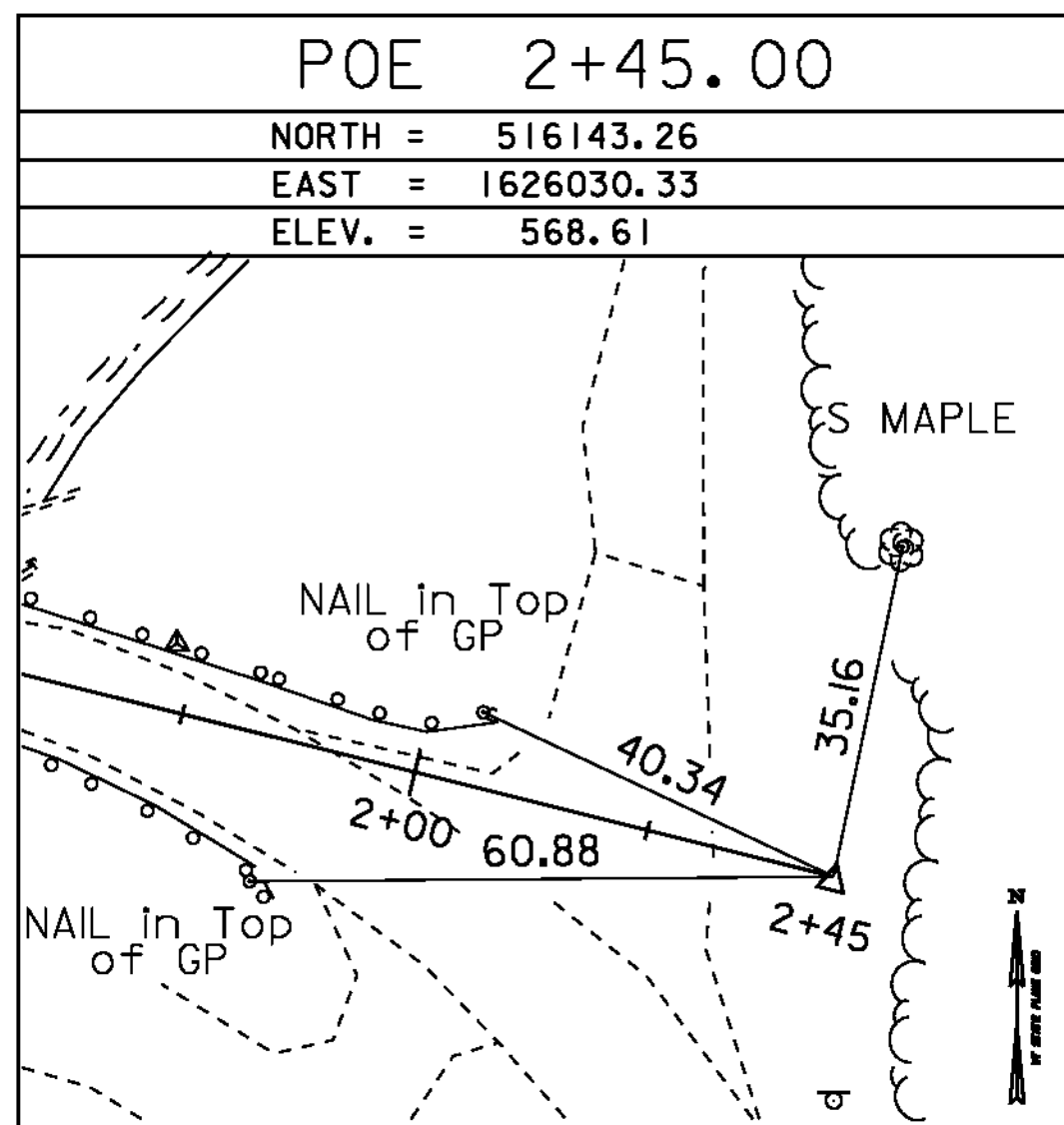
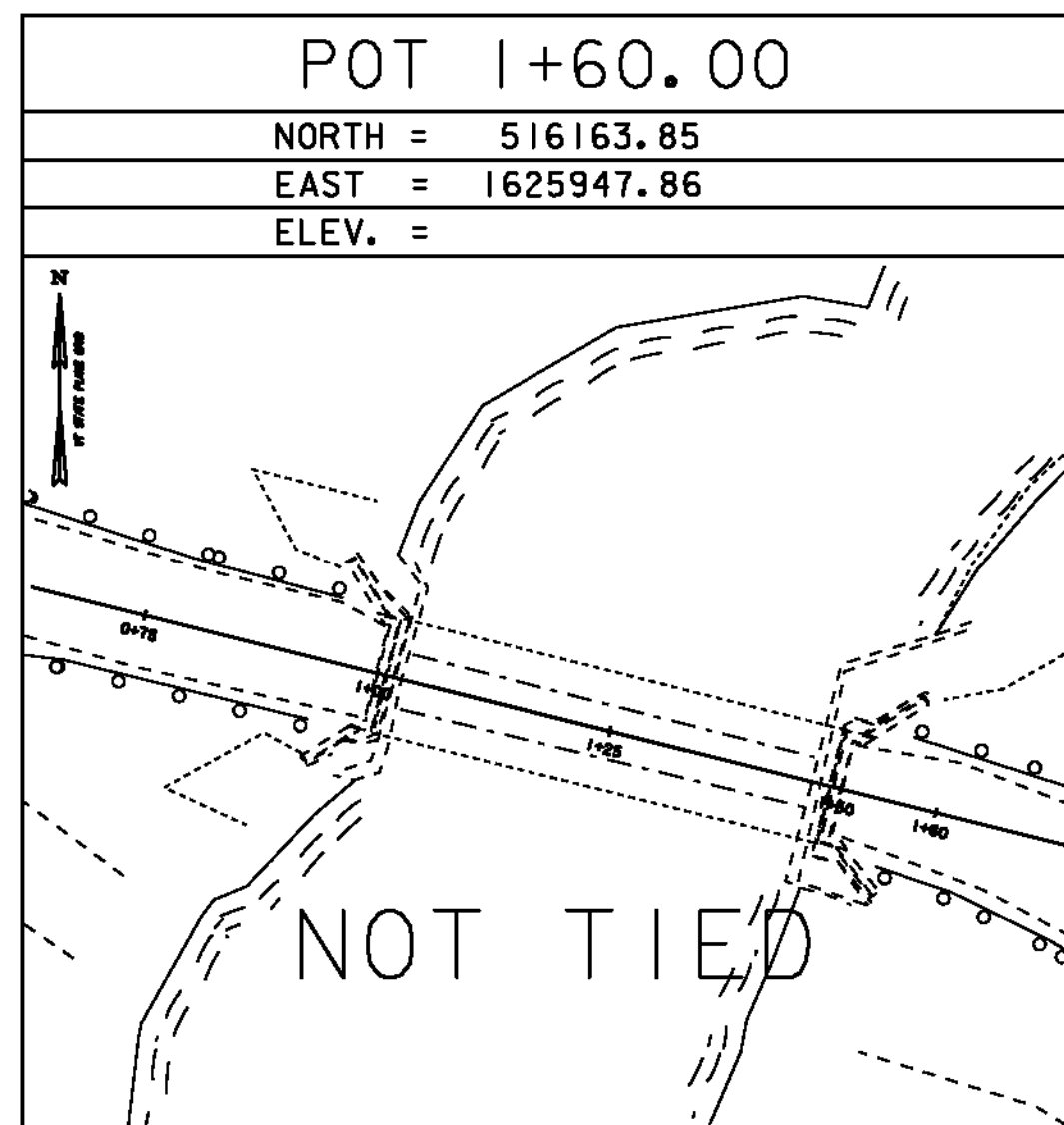
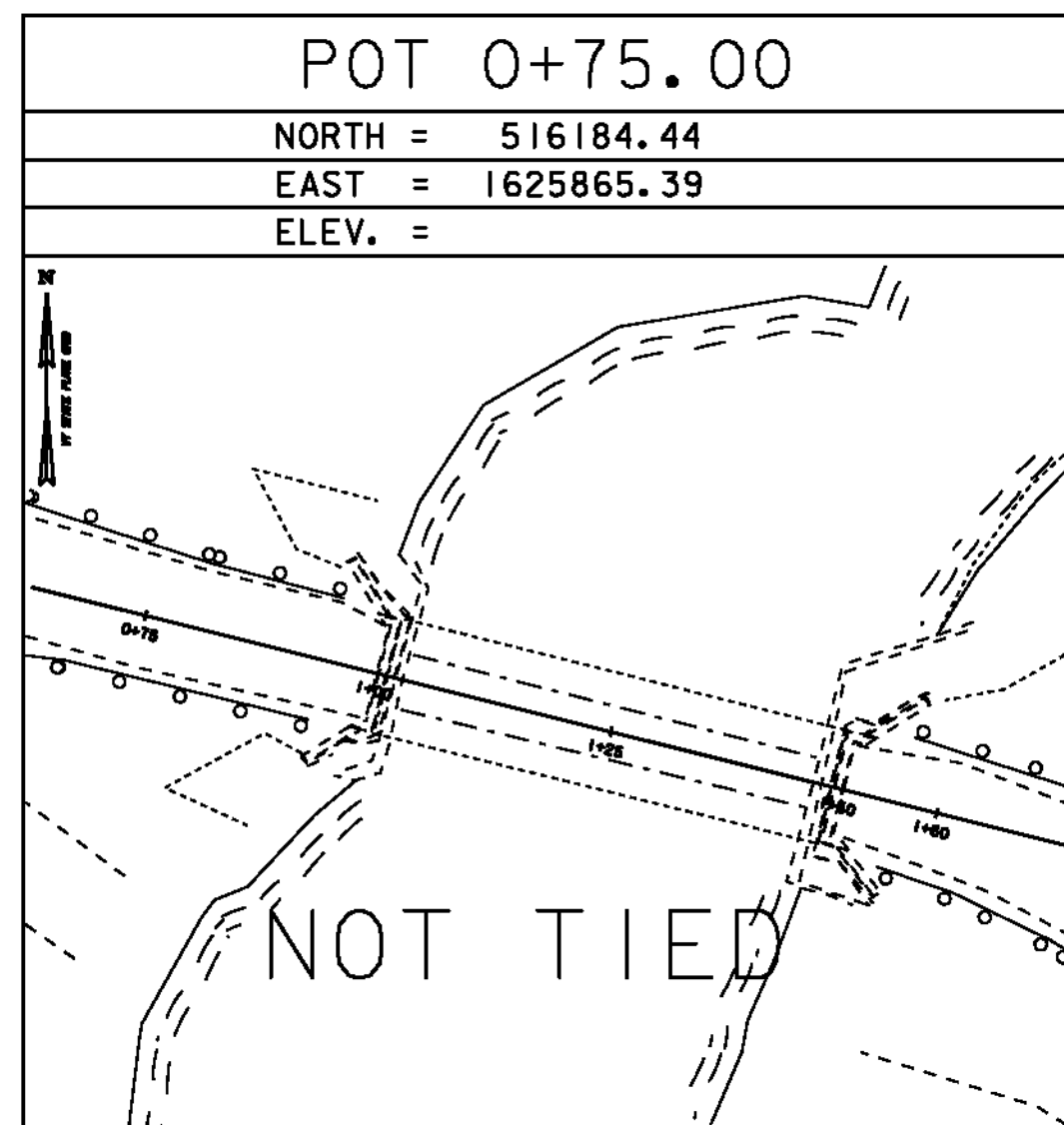
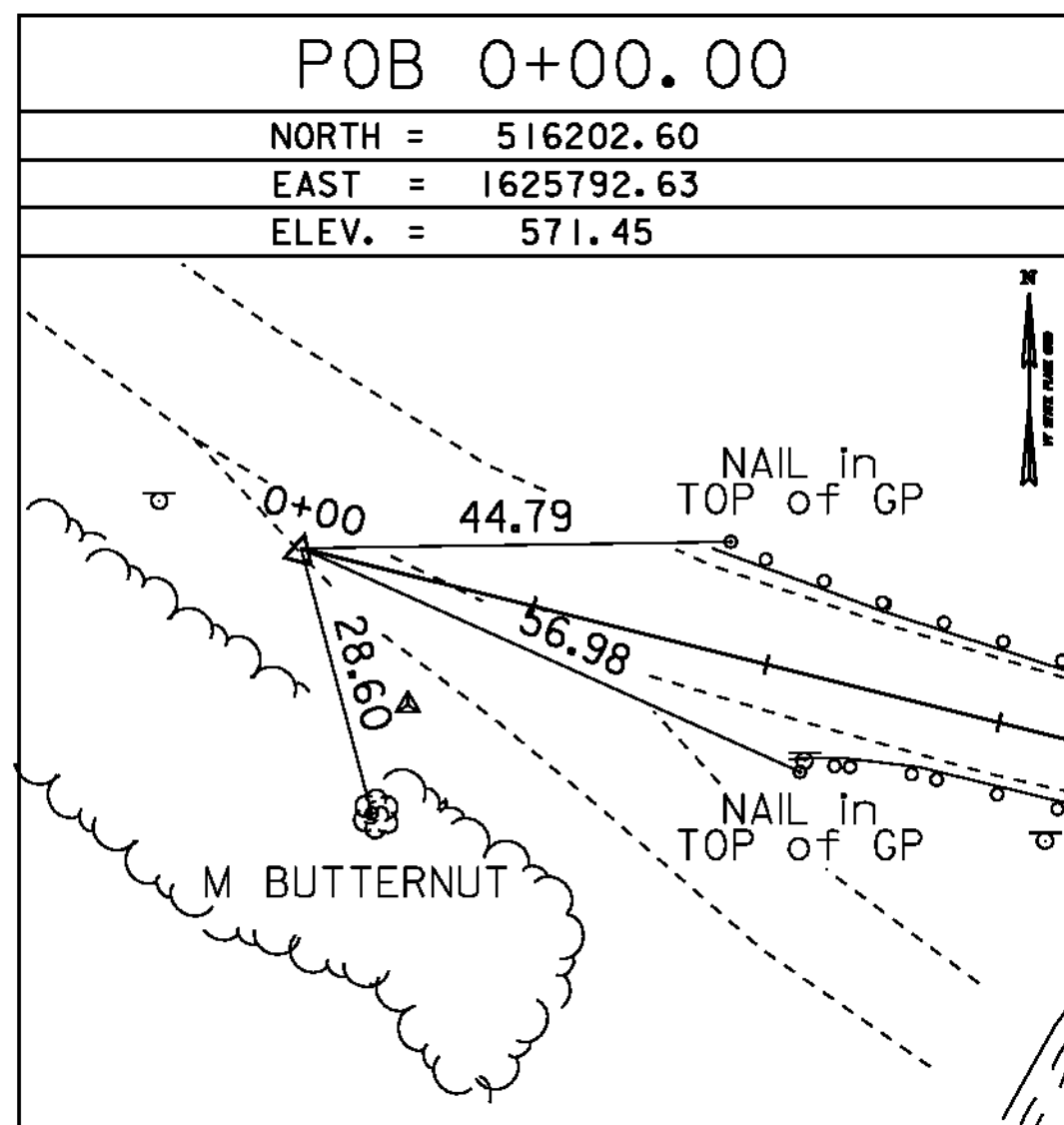
GENERAL LOCATION, RANDOLPH, VT., JUST SOUTH OF EAST RANDOLPH. TO REACH FROM THE INTERSECTION OF VT ROUTE 14 AND VT ROUTE 66 IN EAST RANDOLPH GO SOUTH ALONG VT ROUTE 14 FOR 0.9 MI (1.4 KM) TO THE INTERSECTION OF A GRAVEL DRIVE LEFT, AT THE SOUTH EDGE OF A CEMETERY, AND THE SITE OF THE MARK ON THE LEFT, SOUTH OF THE GRAVEL DRIVE. THE MARK IS SET 3 CM BELOW GROUND SURFACE IN THE TOP OF A 30 CM DIAMETER CONCRETE MONUMENT POURED 1.3 M (4.3 FT) DEEP. IT IS 6.6 M (21.7 FT) EAST OF AND ABOUT 0.5 M (1.6 FT) HIGHER THAN THE CENTERLINE OF VT ROUTE 14, 5.1 M (16.7 FT) SOUTH OF THE CENTERLINE OF THE GRAVEL DRIVE, 13.1 M (43.0 FT) EAST OF POLE NO 30T/7/122/61/30, 14.8 M (48.6 FT) SOUTHWEST OF THE SOUTHWEST CORNER OF THE GRAVESTONE OF BLODGETT, AND 0.3 M (1.0 FT) WEST OF A FIBERGLASS WITNESS POST.

TRAVERSE TIES



* Main Traverse Completed 6/9/08 by R. GILMAN P.C & P. WINTERS... T. PARKER

ALIGNMENT TIES



* Alignment Coordinates as of 27 July 2009

DATUM	
VERTICAL	NAD 88
HORIZONTAL	NAVD 83 (96)
ADJUSTMENT	COMPASS

PROJECT NAME:	Randolph
PROJECT NUMBER:	BHO 1444 (53)
FILE NAME:	06J092\survey\06J092+1.dgn
PROJECT LEADER:	M. SARGENT
DESIGNED BY:	J. Weaver
TIE SHEET	
PLOT DATE:	09-NOV-2010
DRAWN BY:	R. Bullock
CHECKED BY:	M. SARGENT
SHEET	6 OF 27