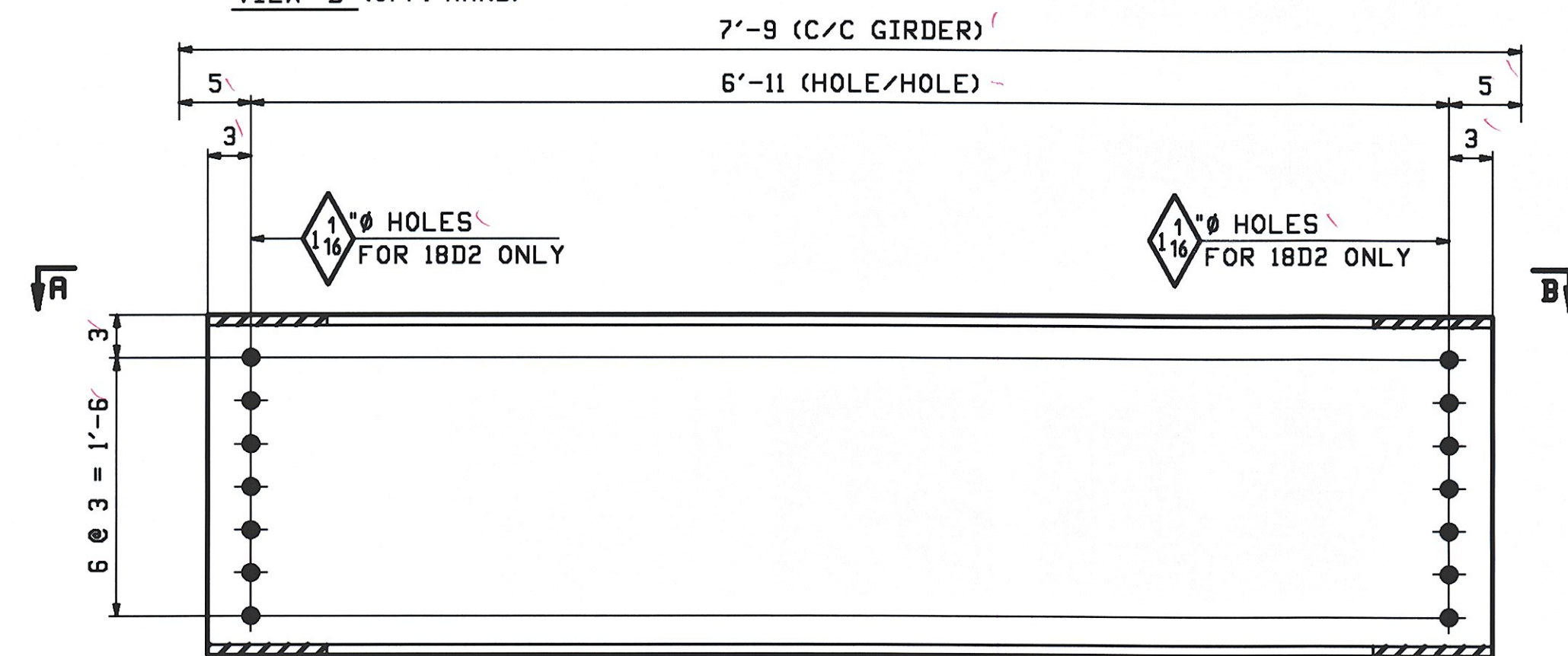
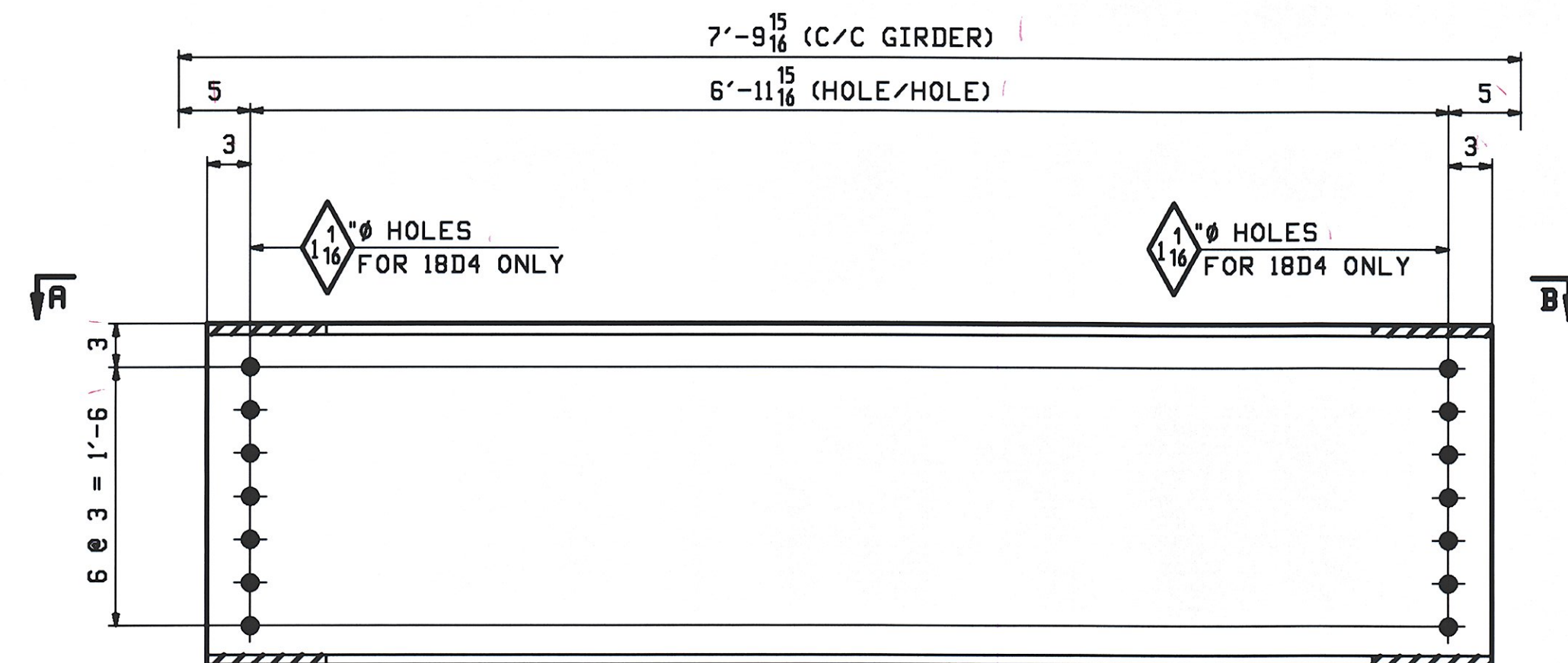


VIEW "A"
VIEW "B" (OPP. HAND)



24 - DIAPHRAGMS - 18D1
8 - DIAPHRAGMS - 18D2



3 - DIAPHRAGMS - 18D3
1 - DIAPHRAGMS - 18D4

PAGE	LINE	MARK	QTY	MARK	MATERIAL	LENGTH		REMARKS	WT	PROCUREMENT NOTES
						FT	INCHES			
		18D1	24		DIAPHRAGM					504
3	T		24		W 24x68	7	5 1/2			
		18D2	8		DIAPHRAGM					504
3	T		8		W 24x68	7	5 1/2			
		18D3	3		DIAPHRAGM					510
3	T		3		W 24x68	7	5 1/16			
		18D4	1		DIAPHRAGM					510
3	T		1		W 24x68	7	5 1/16			

NOTES:
FOR GENERAL NOTES SEE DRAWING GNI.

REV.	DATE	REMARKS	DWN	CHK	APVL	SHOP
MATERIAL:	SURFACE PREP. & PAINT:		HOLES:		SHOP BOLTS:	
M270-50W (UN)	SEE GNI		15/16 U.N.		NONE	
DESCRIPTION: DIAPHRAGMS						
CASCO BAY STEEL STRUCTURES, INC.						
75 SPRING HILL ROAD			SACO, MAINE 04072			
PHONE (207) 282-7360			FAX. (207) 282-1179			
STRUCTURE: VT 11 OVER BLACK RIVER BRIDGE NO. 64					DRAWN:	DATE:
SPRINGFIELD, VERMONT					NJF	06/15
COUNTY OF WINDSOR					CHKD:	DATE:
					DO	06/24
LOCATION: TOWN OF SPRINGFIELD			JOB NO.		DWG NO.	
PROJ NO. BHF 016-2(14)			406-1		18	
CUSTOMER: COLD RIVER BRIDGES, LLC					REV. Δ	

RECEIVED
CHKD BY *DJP* OK'D BY *aw*
JUN 26 2009
APPROVED \checkmark
BY *CWL* DATE 7-13-09