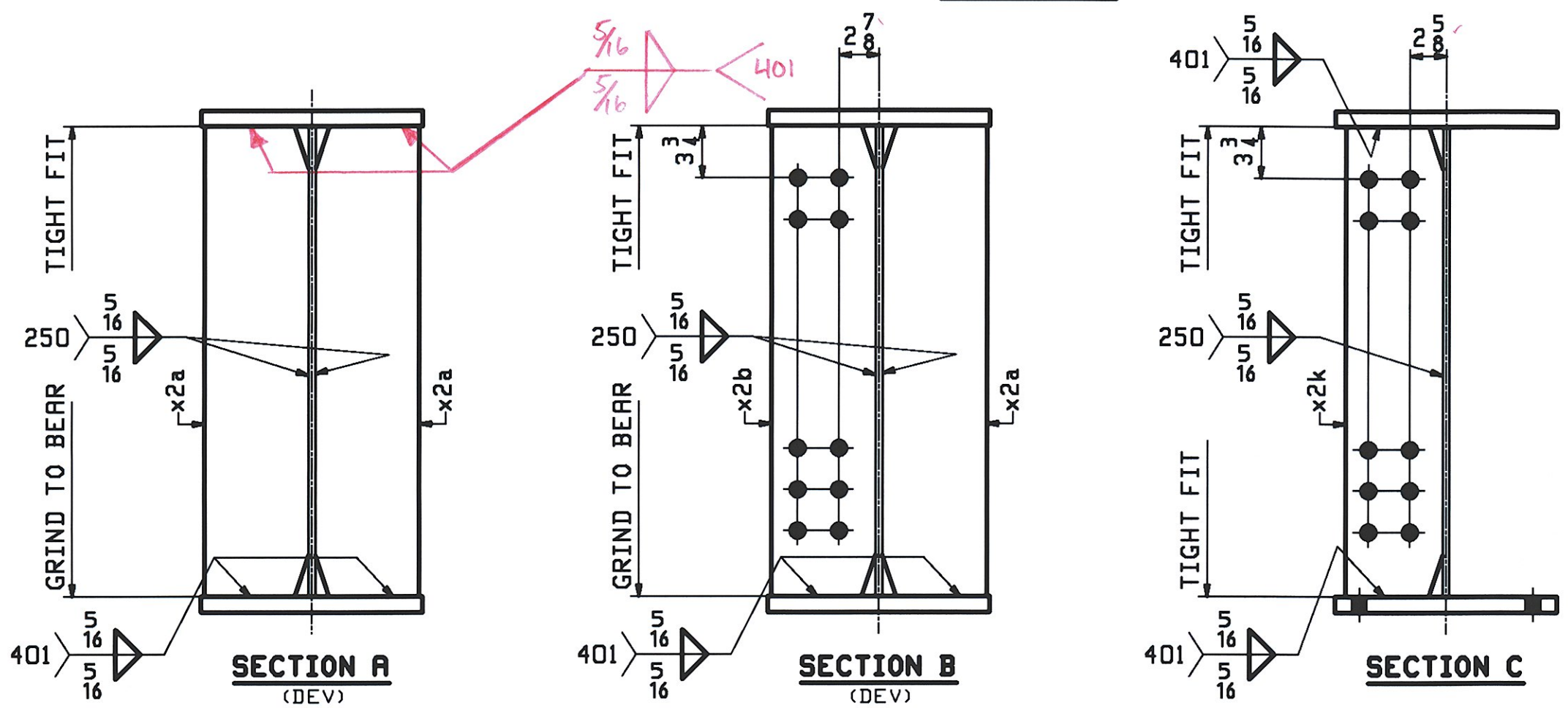
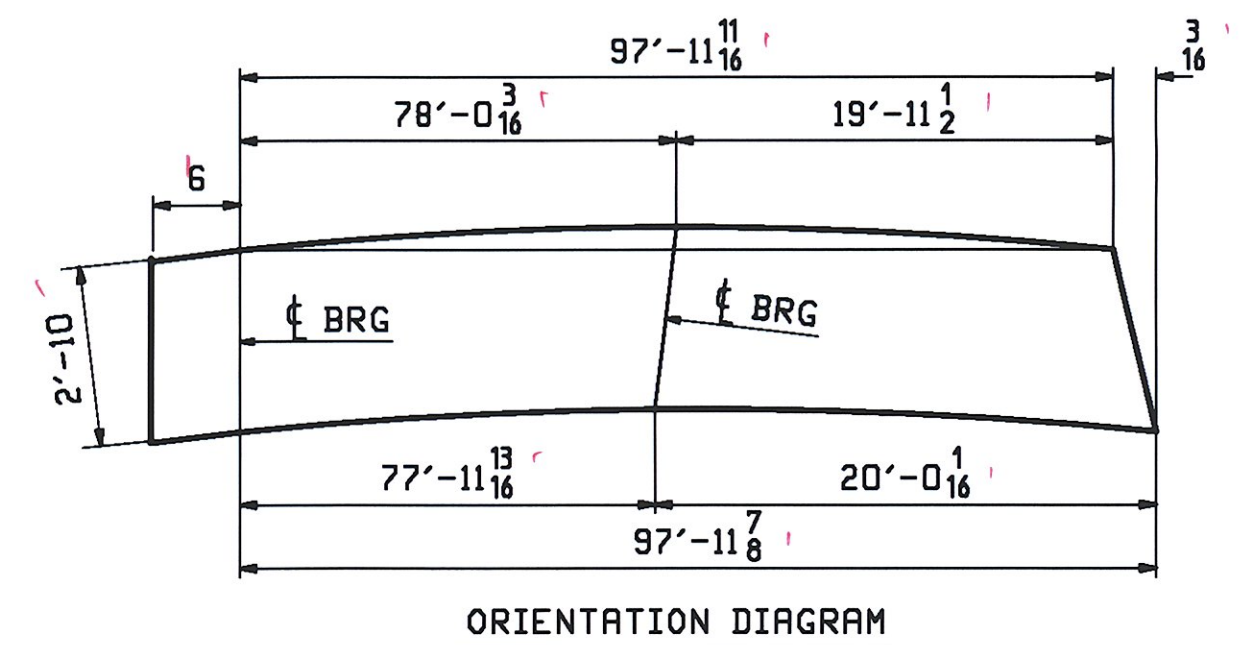
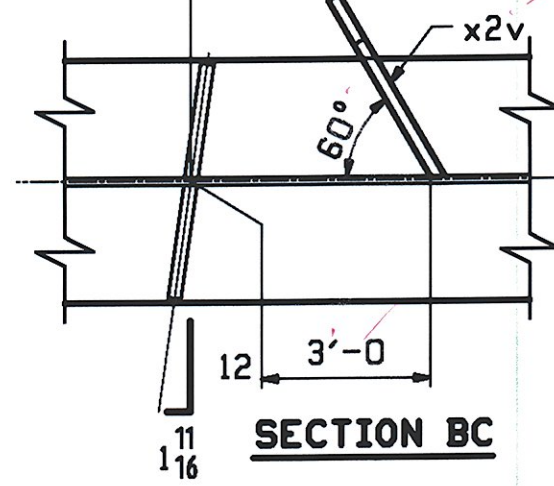
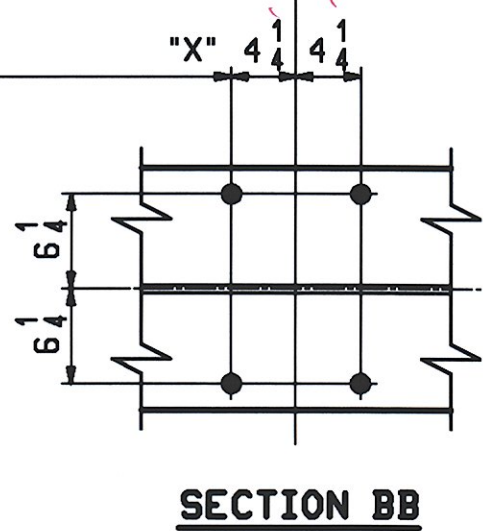
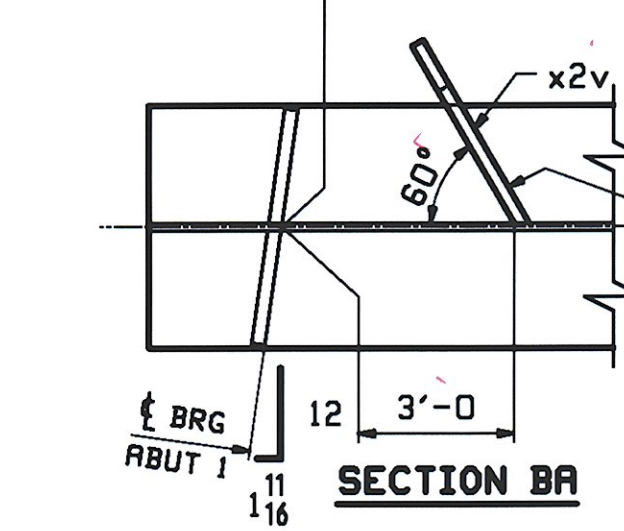


ONE - GIRDER - IG1A

FOR FIELD SPLICE & STANDARD DETAILS SEE X SHEETS
 FOR CAMBER & FLANGE DIAGRAM SEE SHEET C1
 FOR GENERAL NOTES SEE SHEET GNI



| "X" |
|------------|
| 13'-9 9/16 |
| 23'-1 9/16 |
| 33'-1 9/16 |
| 43'-9 9/16 |
| 53'-9 9/16 |
| 63'-1 9/16 |
| 73'-1 9/16 |
| 83'-9 9/16 |
| 93'-1 9/16 |

| BILL OF MATERIAL | | | | | JOB NO. | DRAWING NO. | REV. | | |
|------------------|------|------|-----|------|----------------|---------------------|-------------------|-------|----------------------|
| | | | | | 406-1 | 1 | | | |
| PAGE | LINE | MARK | QTY | MARK | MATERIAL | LENGTH FT INCHES | REMARKS | MT | PROCUREMENT NOTES |
| | | IG1A | 1 | | GIRDER | | | 18290 | |
| 1 | E | | 1 | wa | PL 1/2 x 34 | 54 8 1/8 | M270-50MT2 (H2-3) | | |
| 1 | J | | 1 | wb | PL 2 x 34 | 43 9 1/8 | M270-50MT2 (H2-3) | | |
| 1 | A | | 1 | ta | PL 1/8 x 15 | 58 8 | M270-50MT2 (H2-3) | | |
| 1 | C | | 1 | tb | PL 1/8 x 15 | 39 9 1/8 | M270-50MT2 (H2-3) | | |
| 1 | A | | 1 | ba | PL 1/8 x 15 | 58 8 | M270-50MT2 (H2-3) | | |
| 1 | C | | 1 | bb | PL 1/8 x 15 | 39 9 1/8 | M270-50MT2 (H2-3) | | |
| 2 | G | | 3 | x2a | PL 7/8 x 7 1/2 | 2 10 | MIE BEV | | |
| 2 | G | | 1 | x2b | PL 8 x 7 1/2 | 2 10 | MIE BEV | | |
| 2 | H | | 8 | x2k | PL 2 x 7 | 2 10 | | | |
| 2 | K | | 2 | x2v | PL 1/4 x 3 3/8 | 0 11 | DRIP BARS | | |

FOR FIELD SPLICE XIMI
 DETAILS SEE SHT XI

| REV. | DATE | REMARKS | DWN | CHK | APVL | SHOP |
|-----------------------------------|------|------------------------|--------------------|---------|---------------|------|
| 0 | | | | | | |
| MATERIAL: | | SURFACE PREP. & PAINT: | HOLES: | | SHOP BOLTS: | |
| M270-50M (UN) | | SEE GNI | 5/16" U.N. | | NONE | |
| DESCRIPTION: GIRDER - IG1A | | | | | | |
| CASCO BAY STEEL STRUCTURES, INC. | | | | | | |
| 75 SPRING HILL ROAD | | | SACO, MAINE 04072 | | | |
| PHONE (207) 282-7360 | | | FAX (207) 282-1179 | | | |
| STRUCTURE: VT 11 OVER BLACK RIVER | | | | DRAWN: | DATE: | |
| BRIDGE NO. 64 | | | | WJF | 06/11 | |
| SPRINGFIELD, VERMONT | | | | CHKD: | DATE: | |
| COUNTY OF WINDSOR | | | | DO | 06/22 | |
| LOCATION: TOWN OF SPRINGFIELD | | | | JOB NO. | DWG NO. | |
| PROJ NO. BHF 016-2(14) | | | | 406-1 | 1 | |
| CUSTOMER: COLD RIVER BRIDGES, LLC | | | | | REV. Δ | |

RECEIVED
 JUN 26 2009
 APPROVED AS NOTED
 DATE 7-13-09