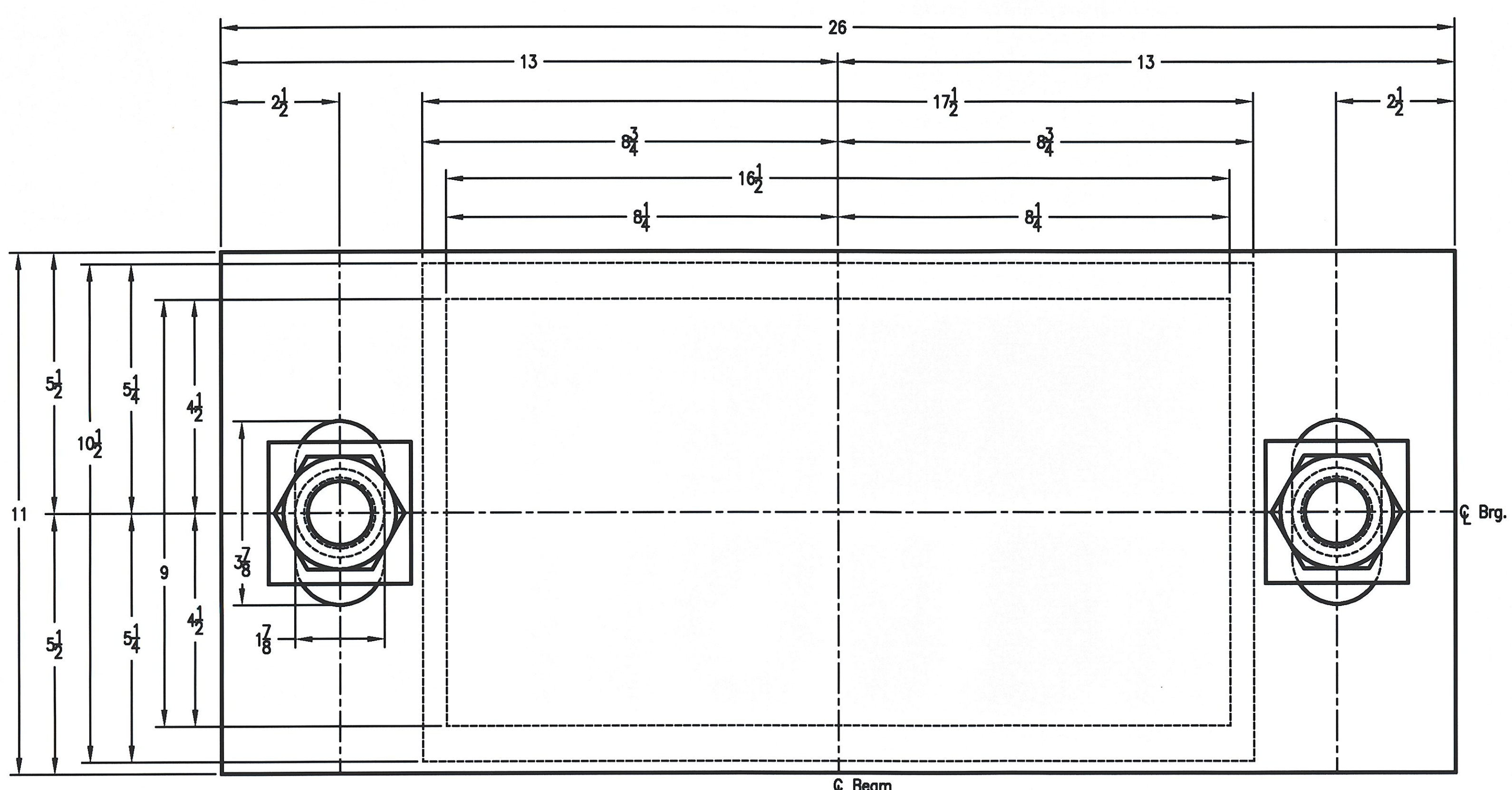
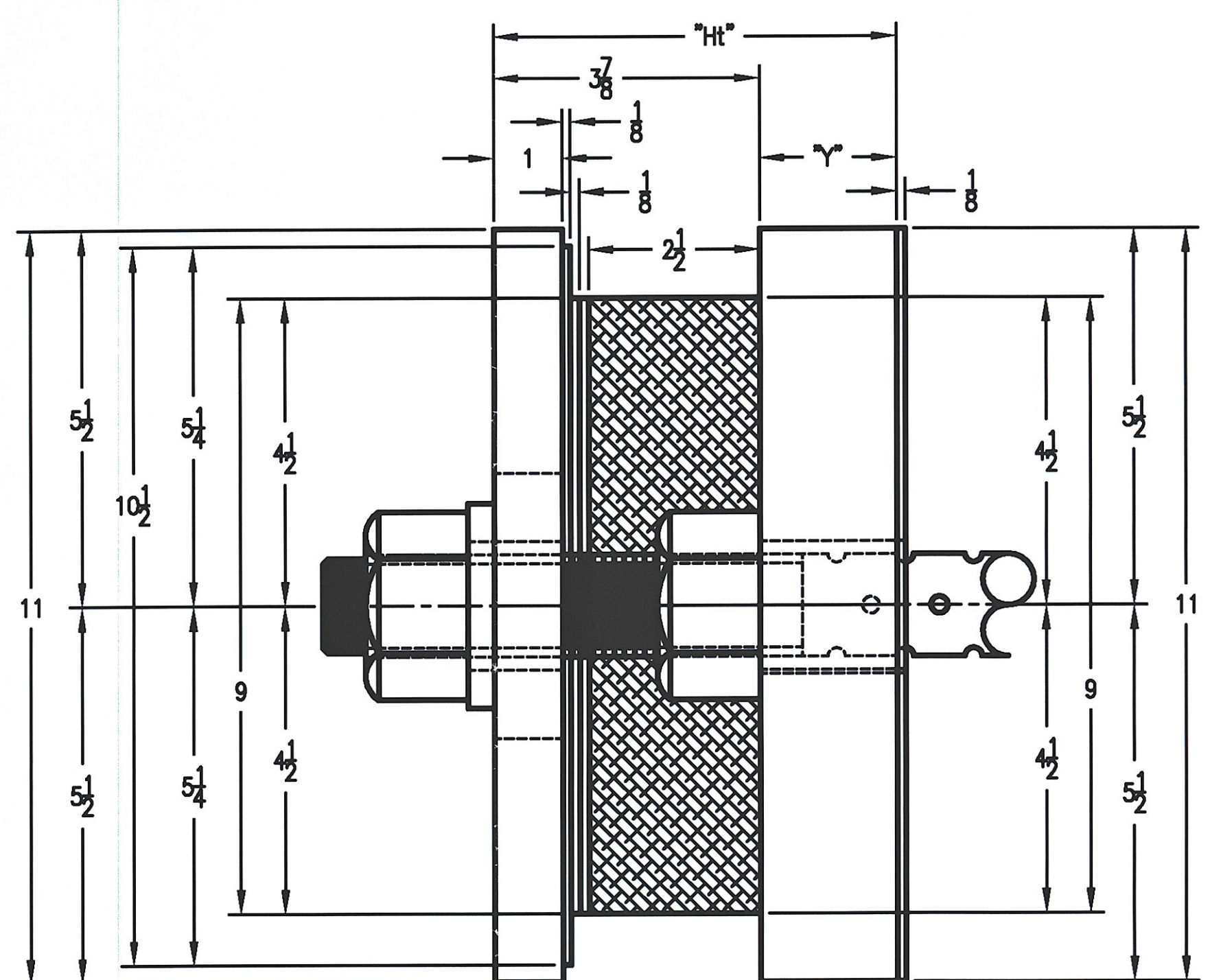


8 7 6 5 4 3 2 1

D



Plan View Expansion Brg w/PTFE Surface @ Abutments



Side View Expansion Brg w/PTFE Surface @ Abutments

REVISIONS			
ZONE	REV	DESCRIPTION	DATE

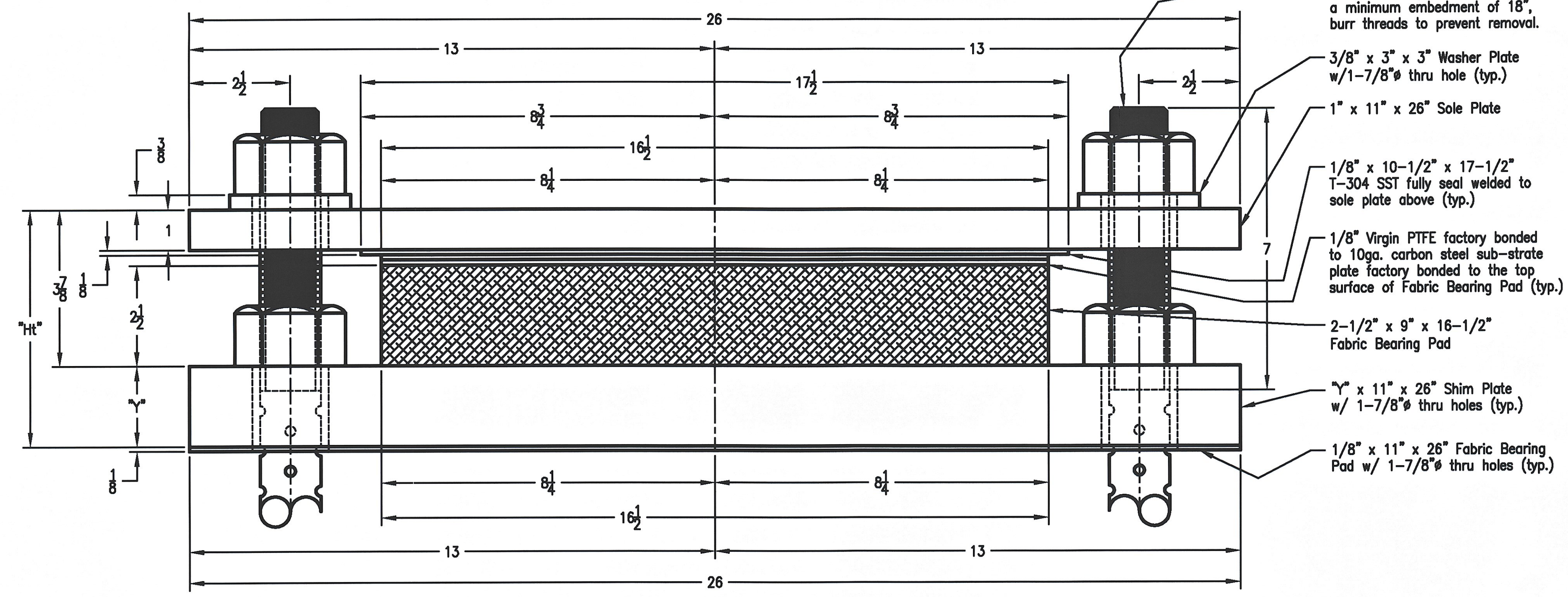
D

C

B

A

B



Elevation View Expansion Brg w/PTFE Surface @ Abutments

(Qty. Req'd. = 14 assy. Item No. #531.10)

- 1-1/2" x 27" lg Swedged Galv. Anchor Bolt w/7" of threads and a minimum embedment of 18", burr threads to prevent removal.
- 3/8" x 3" x 3" Washer Plate w/1-7/8" thru hole (typ.)
- 1" x 11" x 26" Sole Plate
- 1/8" x 10-1/2" x 17-1/2" T-304 SST fully seal welded to sole plate above (typ.)
- 1/8" Virgin PTFE factory bonded to 10ga. carbon steel sub-strate plate factory bonded to the top surface of Fabric Bearing Pad (typ.)
- 2-1/2" x 9" x 16-1/2" Fabric Bearing Pad
- 1/2" x 11" x 26" Shim Plate w/ 1-7/8" thru holes (typ.)
- 1/8" x 11" x 26" Fabric Bearing Pad w/ 1-7/8" thru holes (typ.)

ABUTMENT #1 SHIM PLATE TABLE

GIRDER NO.	QTY.	DIM "Y"	DIM "H"
#1	1	2-1/2"	6-3/8"
#2	1	2"	5-7/8"
#3 thru #7	5	2-1/2"	6-3/8"

ABUTMENT #2 SHIM PLATE TABLE

GIRDER NO.	QTY.	DIM "Y"	DIM "H"
#1	1	2"	5-7/8"
#2	1	1-1/2"	5-3/8"
#3 thru #7	5	2"	5-7/8"

NOTES:

1. BEARINGS TO BE MANUFACTURED ACCORDING TO AASHTO STANDARD SPECIFICATIONS FOR HIGHWAY BRIDGES, 1984 EDITION, 1996 WITH CURRENT INTERIMS (1997 & 1998, SECTION #14).
2. THE BEARINGS ARE DESIGNED SO THAT THE SUPERSTRUCTURE MAY BE ERECTED WHEN THE AMBIENT AIR TEMPERATURE IS WITHIN THE RANGE OF 4 DEG. C. TO 32 DEG. C.
3. ALL STEEL IN BEARINGS SHALL BE AASHTO M270 GRADE 36, U.L.O. EXCEPT ANCHOR BOLTS AND NUTS.
4. STAINLESS STEEL SHALL BE AASHTO A240 TYPE 304 W/ 2B FINISH.
5. ALL STEEL PRODUCED IN THE U.S.A.
6. CONTACT PETER SOMOGH, COORDINATOR.
7. TOLERANCES: THICKNESS -0+1/8 X/6
PLAN -0+1/8 X/6
8. MANUFACTURING FACILITY LOCATION: AMSCOT STRUCTURAL PRODUCTS INC. 241 EAST BLACKWELL STREET DOVER, NJ 07801
9. ALL DIMENSIONS ARE IN INCHES.
10. ALL BEARING DEVICES SHALL BE GALVANIZED AS PER STANDARD SPECIFICATIONS 506.15 AND 531.04(b), AS MODIFIED BY THE GENERAL SPECIAL PROVISIONS.
11. ALL ANCHOR BOLTS, NUTS AND WASHERS SHALL BE GALVANIZED.
12. PRIOR TO GALVANIZING, ALL CORNERS AND EDGES OF STEEL PLATES, SHAPES, ETC. SHALL BE GROUNDED TO A 1/16" RADIUS (TYP).
13. THE SURFACE FINISH OF THE CONTACT (SLIDING) FACE OF THE STAINLESS STEEL SHALL HAVE 2B POLISHED FINISH. MIRROR FINISH OR LESS THAN 0.25 μm (10 MICRO INCHES) RMS (ROOT MEAN SQUARE).

RECEIVED
 DRP OK'D BY [Signature]
 JUN 26 2009
 REVISED BY [Signature] APPROVED AS NOTED
 DATE 7-13-09

VERMONT AGENCY OF TRANSPORTATION
 PROJECT NAME: SPRINGFIELD
 PROJECT NUMBER: BHF-016-2(14)

AMSCOT
 STRUCTURAL PRODUCTS CORP. Job No. #3231

SCALE: N.T.S.	APPR'D: R.F.	DRAWN BY: P.S.
DATE: 6/8/09		REV.: 0
PREFORMED FABRIC PADS W/PTFE & SST SLIDE SURFACES		
FOR: COLD RIVER BRIDGE, LLC.	SHEET NO 1 of 2	DWG NO: CRB09A1RO.DWG

8 7 6 5 4 3 2 1