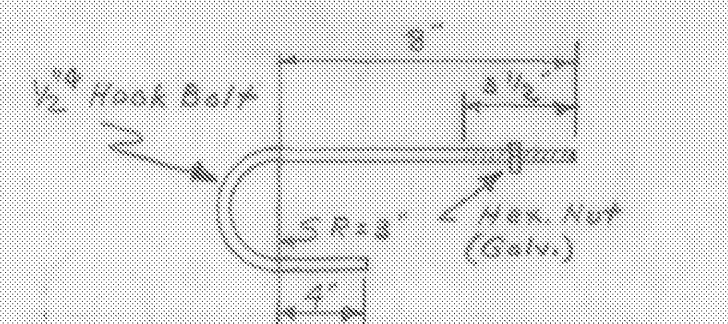
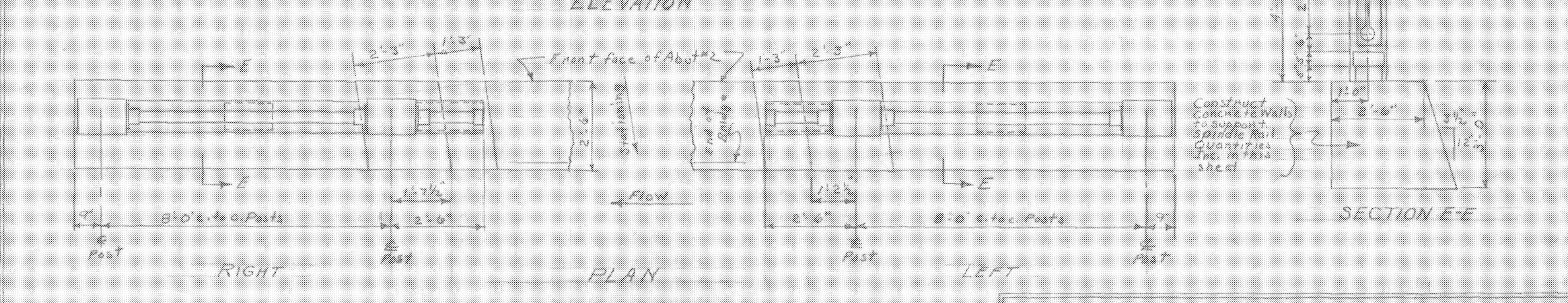
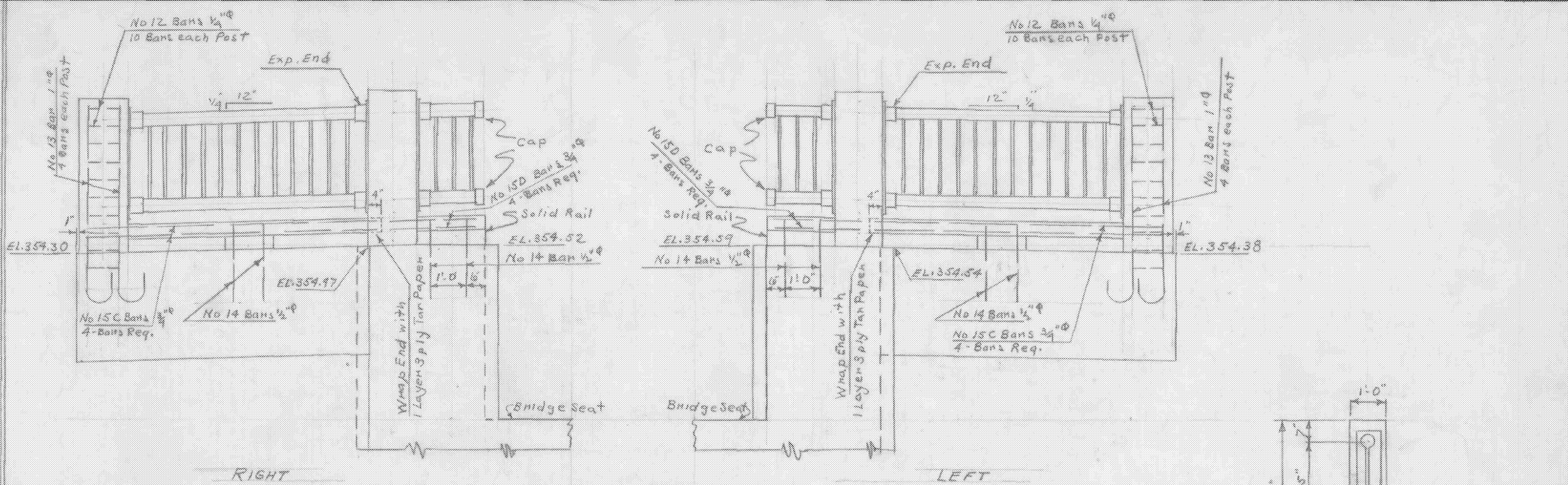
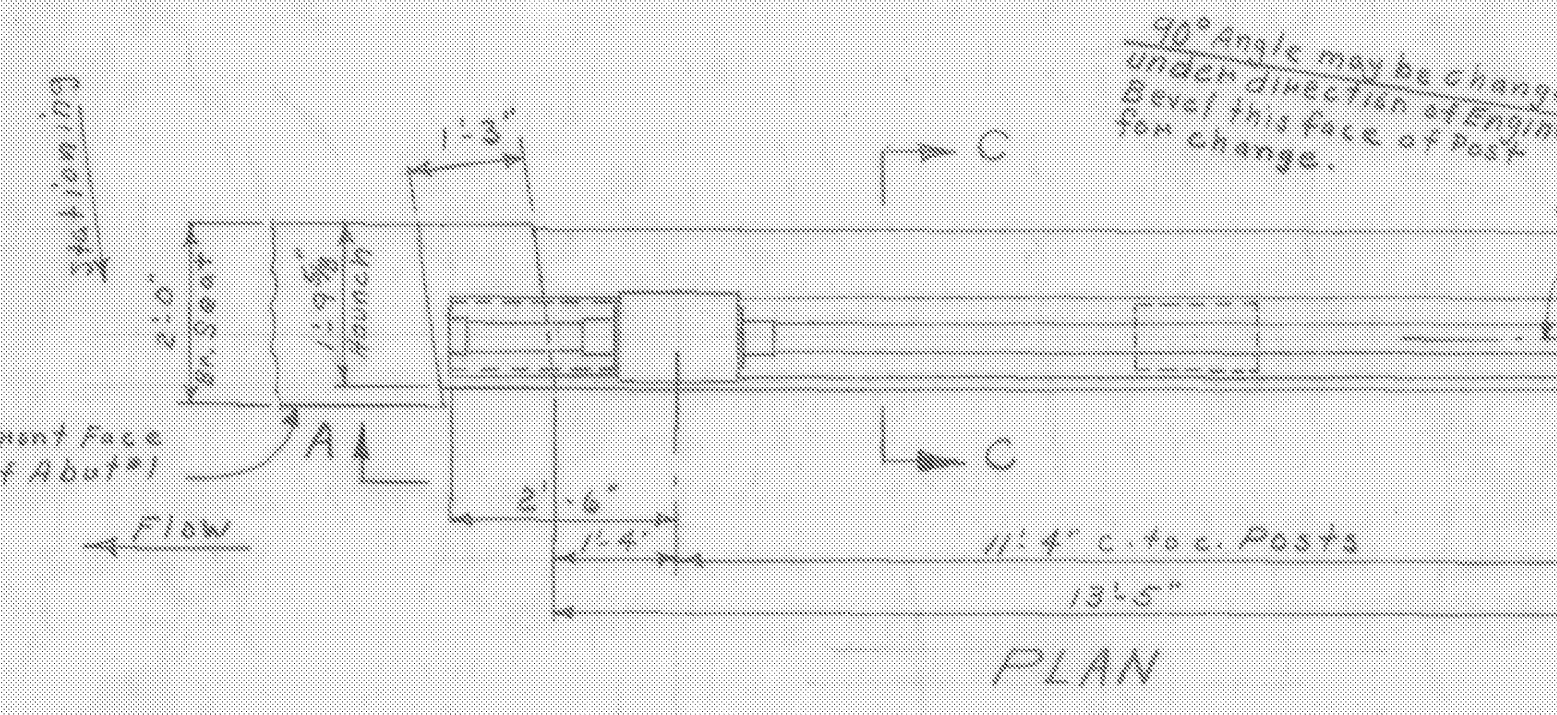
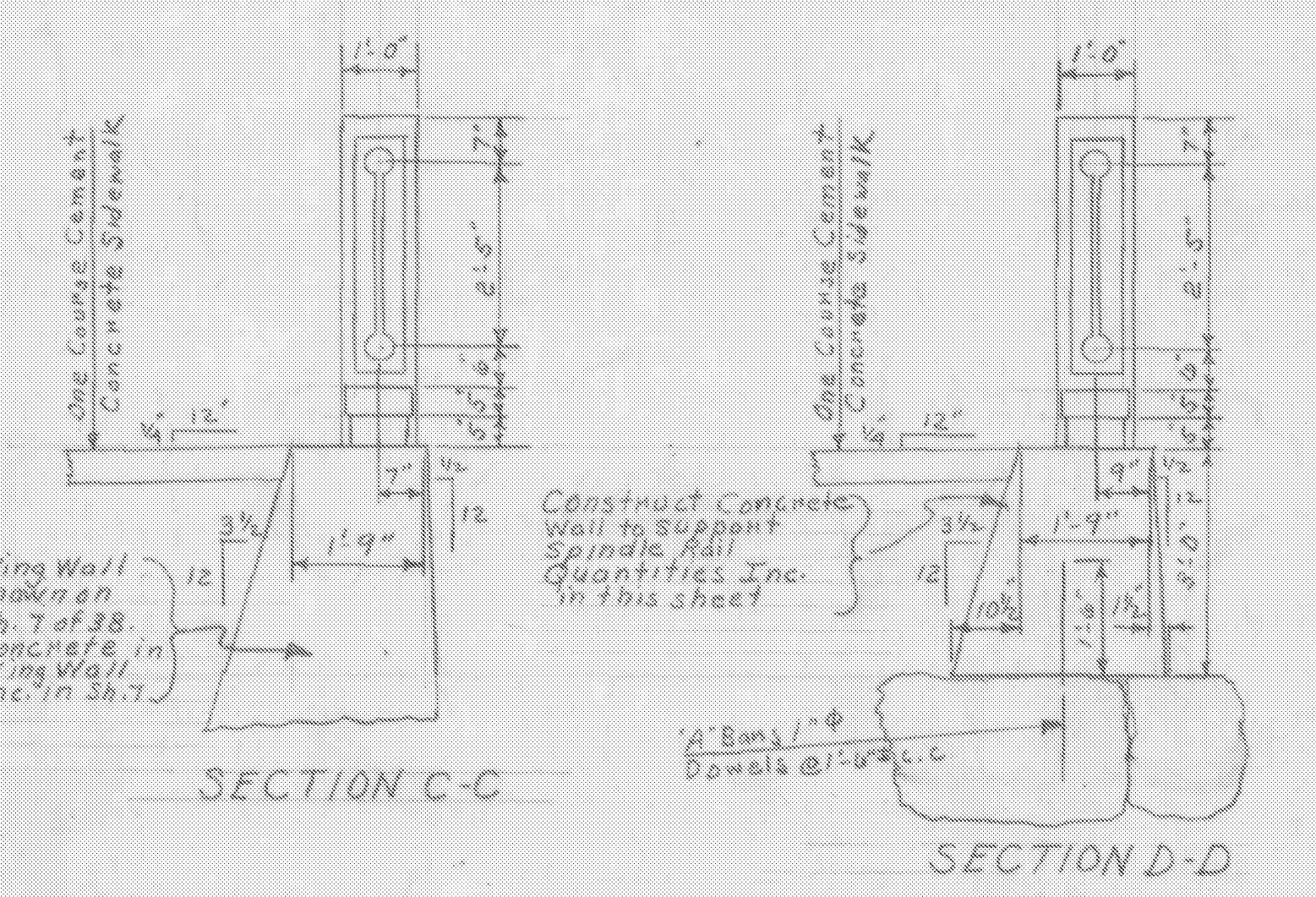


DETAILS OF PIPE & SPINDLE RAIL
LEFT OF ABUTMENT #1
SCALE 1/2" = 1'-0"



BAR	SIZE	No. REQ.	LENGTH	DETAILS
12	1/2"	50	3'-6"	See SB-55
13	1"	20	6'-6"	"
14	1/2"	10	5'-4 1/2"	"
15A	3/4"	4	23'-11"	Straight
15B	3/4"	4	12'-0"	Straight
A	1"	15	3'-0"	Straight - Dowels

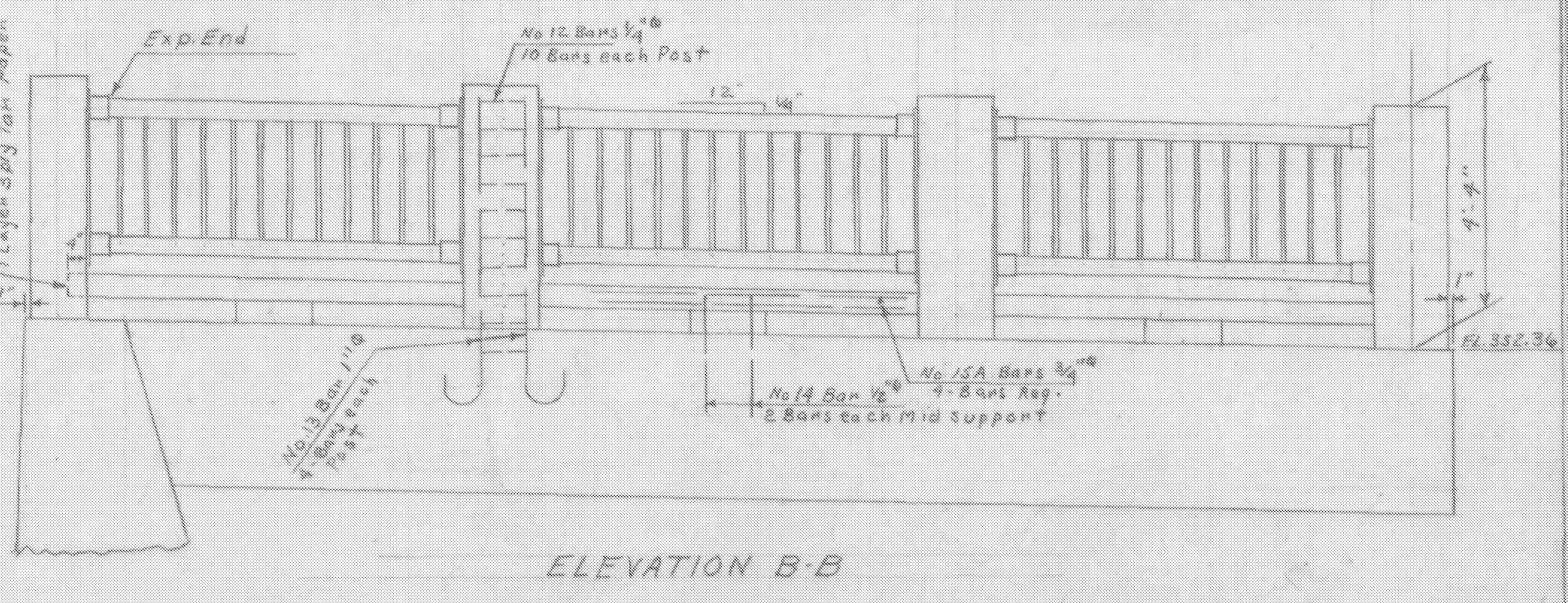
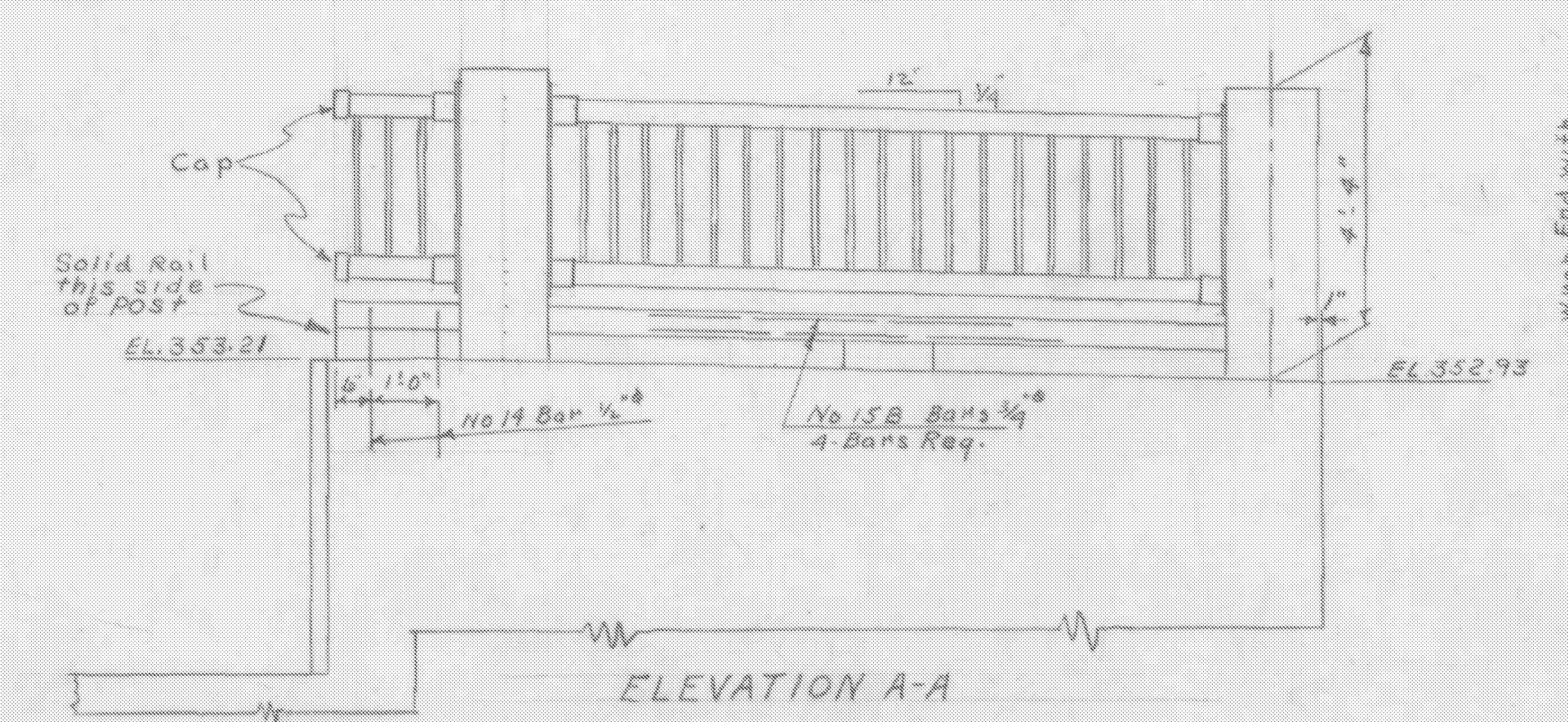


REINFORCING STEEL

BAR	SIZE	No. REQ.	LENGTH	DETAILS
12	1/2"	40	3'-6"	See SB-55
13	1"	16	6'-6"	"
14	1/2"	8	5'-4 1/2"	"
15C	3/4"	8	7'-11"	Straight
15D	3/4"	8	2'-4"	"

12 HOOK BOLTS REQ. AS PER DETAIL SB-55

DETAILS OF PIPE & SPINDLE RAIL
LEFT & RIGHT OF ABUTMENT #2
SCALE 1/2" = 1'-0"



NOTE: All Concrete to be Class B.
All reinforcing steel to be Intermediate Grade.
Quantities for Post, Rail & Wall inc. in this sheet.
For Details of Post & Rail, Connections etc. use sheet SB-55.
Drilling & Grouting of Dowels to be paid for under unit price bid for Concrete, Class B.
Designed in accordance with A.A.S.H.O. Specifications of 1944 & State of Vermont, Dept. of Highways, Std. Specifications for Road & Bridge Construction of 1948.
Pipe Railing & Connections under Steel Superstructure.

SPRINGFIELD
BHF 016-2 (14)
REFERENCE SHEET 8 OF 11
SHEET 69 OF 72

SPRINGFIELD
DETAILS OF PIPE & SPINDLE RAIL
LEFT OF ABUTMENT #1 &
LEFT & RIGHT OF ABUTMENT #2
SCALE 1/2" = 1'-0"

ESTIMATED QUANTITIES

ITEM	ABUT #1	ABUT #2
Structure Excav.	11 CY	10 CY
Concrete Class B	8 CY	7 CY
Reinforcing Steel	760 LBS	410 LBS
Steel Superstructure	121 LBS	5 LBS

Surveyed by
Designed by
Drawn by J.L.H.
Traced by
Checked by S.N.
Series U No 123(4) Filed
Sheet 11 of 38 Sheets