

CONSTRUCTION SPECIFICATIONS

1. FILTER FABRIC SHALL HAVE AN APPARENT OPENING SIZE OF 40-85. BURLAP MAY BE USED FOR SHORT TERM APPLICATIONS.
2. CUT FABRIC FROM A CONTINUOUS ROLL TO ELIMINATE JOINTS. IF JOINTS ARE NEEDED THEY WILL BE OVERLAPPED TO THE NEXT STAKE.
3. STAKE MATERIALS WILL BE STANDARD 2"x 4" WOOD OR EQUIVALENT METAL WITH A MINIMUM LENGTH OF 3'.
4. SPACE STAKES EVENLY AROUND INLET 3' APART AND DRIVE A MINIMUM 18" DEEP. SPANS GREATER THAN 3' MAY BE BRIDGED WITH THE USE OF WIRE MESH BEHIND THE FILTER FABRIC FOR SUPPORT.
5. FABRIC SHALL BE EMBEDDED 1' MINIMUM BELOW GROUND AND BACKFILLED. IT SHALL BE SECURELY FASTENED TO THE STAKES AND FRAME.
6. A 2" x 4" WOOD FRAME SHALL BE COMPLETED AROUND THE CREST OF THE FABRIC FOR OVER FLOW STABILITY.
7. MAXIMUM DRAINAGE AREA 1 ACRE

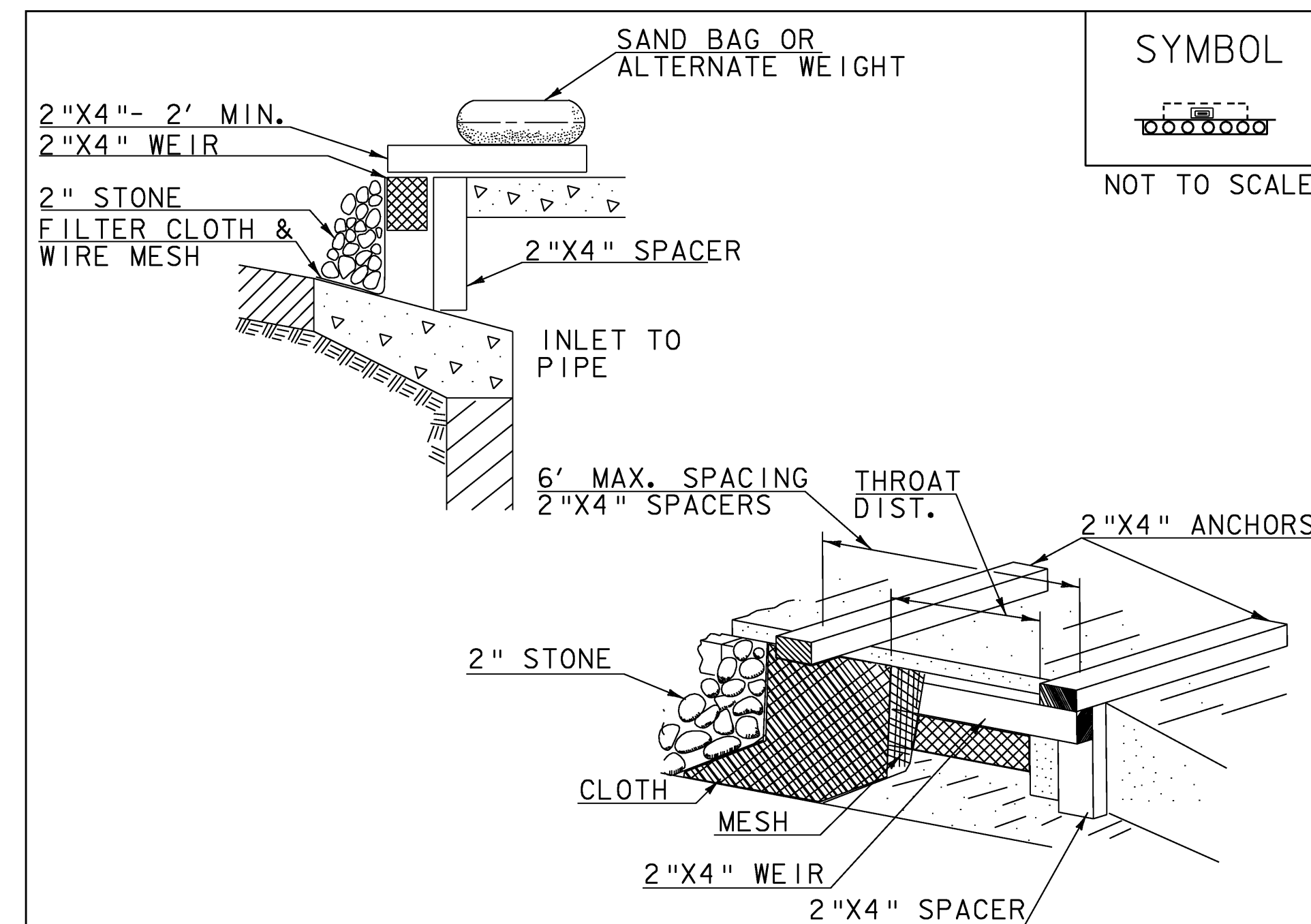
ADAPTED FROM DETAILS PROVIDED BY: NEW YORK STATE DEC
ORIGINALLY DEVELOPED BY USDA-NRCS
VERMONT DEPARTMENT OF ENVIRONMENTAL CONSERVATION

**FILTER FABRIC
DROP INLET
PROTECTION**

NOTES:
REFER TO "THE VERMONT STANDARDS & SPECIFICATIONS FOR
EROSION PREVENTION & SEDIMENT CONTROL -2006- "FROM
THE VT AGENCY OF NATURAL RESOURCES FOR ADDITIONAL
GUIDANCE.

THIS WORK SHALL BE PERFORMED IN ACCORDANCE WITH
SECTION 653 FOR INLET PROTECTION DEVICE, TYPE I (PAY
ITEM 653.40).

REVISIONS	
MARCH 7, 2008	WHF
JANUARY 13, 2009	WHF



CONSTRUCTION SPECIFICATIONS

1. FILTER FABRIC SHALL HAVE AN APPARENT OPENING SIZE OF 40-85.
2. WOODEN FRAME SHALL BE CONSTRUCTED OF 2" x 4" CONSTRUCTION GRADE LUMBER.
3. WIRE MESH ACROSS THROAT SHALL BE A CONTINUOUS PIECE 30" MINIMUM WIDTH WITH A LENGTH 4' LONGER THAN THE THROAT. IT SHALL BE SHAPED AND SECURELY NAILED TO A 2"x 4" WEIR.
4. THE WEIR SHALL BE SECURELY NAILED TO 2"x 4" SPACERS 9' LONG SPACED NO MORE THAN 6' APART.
5. THE ASSEMBLY SHALL BE PLACED AGAINST THE INLET AND SECURED BY 2"x 4" ANCHORS 2' LONG EXTENDING ACROSS THE TOP OF THE INLET AND HELD IN PLACE BY SANDBAGS OR ALTERNATE WEIGHTS.
6. MAXIMUM DRAINAGE AREA 1 ACRE

ADAPTED FROM DETAILS PROVIDED BY: NEW YORK STATE DEC
ORIGINALLY DEVELOPED BY USDA-NRCS
VERMONT DEPARTMENT OF ENVIRONMENTAL CONSERVATION

**CURB DROP INLET
PROTECTION**

NOTES:
REFER TO "THE VERMONT STANDARDS & SPECIFICATIONS FOR
EROSION PREVENTION & SEDIMENT CONTROL -2006- "FROM
THE VT AGENCY OF NATURAL RESOURCES FOR ADDITIONAL
GUIDANCE.

THIS WORK SHALL BE PERFORMED IN ACCORDANCE WITH
SECTION 653 FOR INLET PROTECTION DEVICE, TYPE I (PAY
ITEM 653.40).

REVISIONS	
MARCH 6, 2008	WHF
JANUARY 13, 2009	WHF

PROJECT: SPRINGFIELD	PROJECT NO. # BHF 016-2 (14)
DESIGN FILE NAME: 06j004\Structures\s06j004erodet.dgn	
IPARM FILE NAME: 06j004epscl.i	PLOT DATE: 23-MAR-2009
DESIGNED BY: CONST. ENV. SECTION	DRAWN BY: C. CARLSON
SQUAD LEADER: R. WHITCOMB	CHECKED BY: D. PETERSON
EPSC DETAIL SHEET - 1	SHEET: 60 OF 72

NTS