

Stantec

Copyright Reserved
 The Contractor shall verify and be responsible for all dimensions. DO NOT scale the drawing - any errors or omissions shall be reported to Stantec without delay.
 The Copyrights in all designs and drawings are the property of Stantec. Reproduction or use for any purpose other than that authorized by Stantec is forbidden.

Consultants

Legend

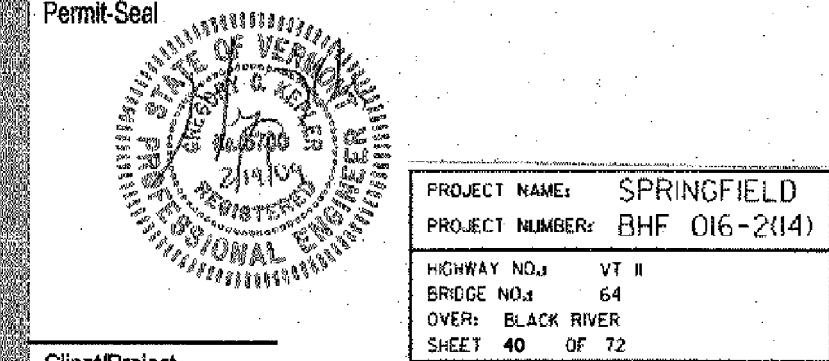
Notes

- REFER TO SHEET C-501 FOR GENERAL CONSTRUCTION / SEQUENCING NOTES
- REFER TO STATE OF VERMONT AGENCY OF TRANSPORTATION DRAWINGS FOR SITE RELATED LAYOUT INFORMATION AND DETAILS.
- REFER TO STATE OF VERMONT AGENCY OF TRANSPORTATION DRAWINGS FOR ADDITIONAL EROSION CONTROL MEASURES AND DETAILS.
- THE CONTRACTOR IS TO CONTACT DIG SAFE IN VERMONT AT (888) DIG-SAFE, A MINIMUM OF 72 HOURS PRIOR TO COMMENCING WORK. THE CONTRACTOR SHALL VERIFY THE LOCATIONS OF ALL OVERHEAD AND UNDERGROUND ELECTRIC, FIRE PROTECTION AND TELEPHONE LINES AND TAKE NECESSARY PRECAUTIONS IN STRICT ACCORDANCE WITH OSHA STANDARDS DURING CONSTRUCTION.
- ALL NEW PIPE AND SEWER MANHOLE STRUCTURES INSTALLED ARE REQUIRED TO PASS ALL REQUIRED TESTING PROCEDURES.
- STANTEC TO REVIEW AND APPROVE ALL SHOP DRAWINGS ASSOCIATED WITH SEWER MANHOLE STRUCTURES, SEWER PIPE AND ALL MATERIALS APPURTENANT FOR THE BRIDGE CROSSING.

Revision	By	Appd.	Y1.MM.DD

1 FINAL DESIGN TO VACT - BRIDGE SECTION	B.V.D.	G.C.K.	B.V.D.	08.02.19
Issued	By	Appd.	Y1.MM.DD	

File Name: 00385C-102.dwg	B.V.D.	G.C.K.	B.V.D.	08.02.09
	Dwn.	Chd.	Deqn.	Y1.MM.DD



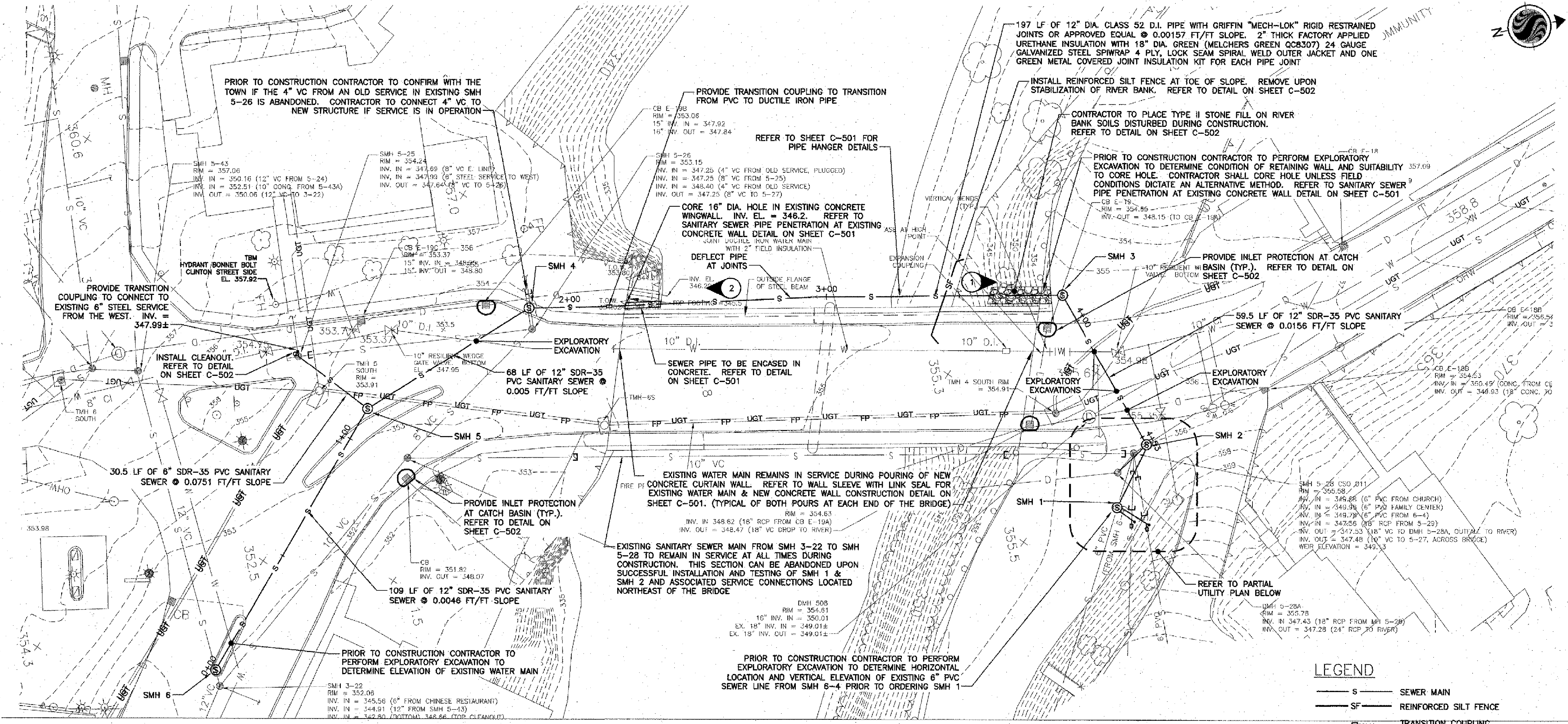
Client/Project
 TOWN OF SPRINGFIELD

COMMUNITY CENTER BRIDGE
 UTILITY CROSSING
 Springfield, Vermont

Title
 SITE UTILITY PLAN

Project No.	Scale
210800385	AS SHOWN

Drawing No.	Sheet	Revision
C-102	U2 of U5	0



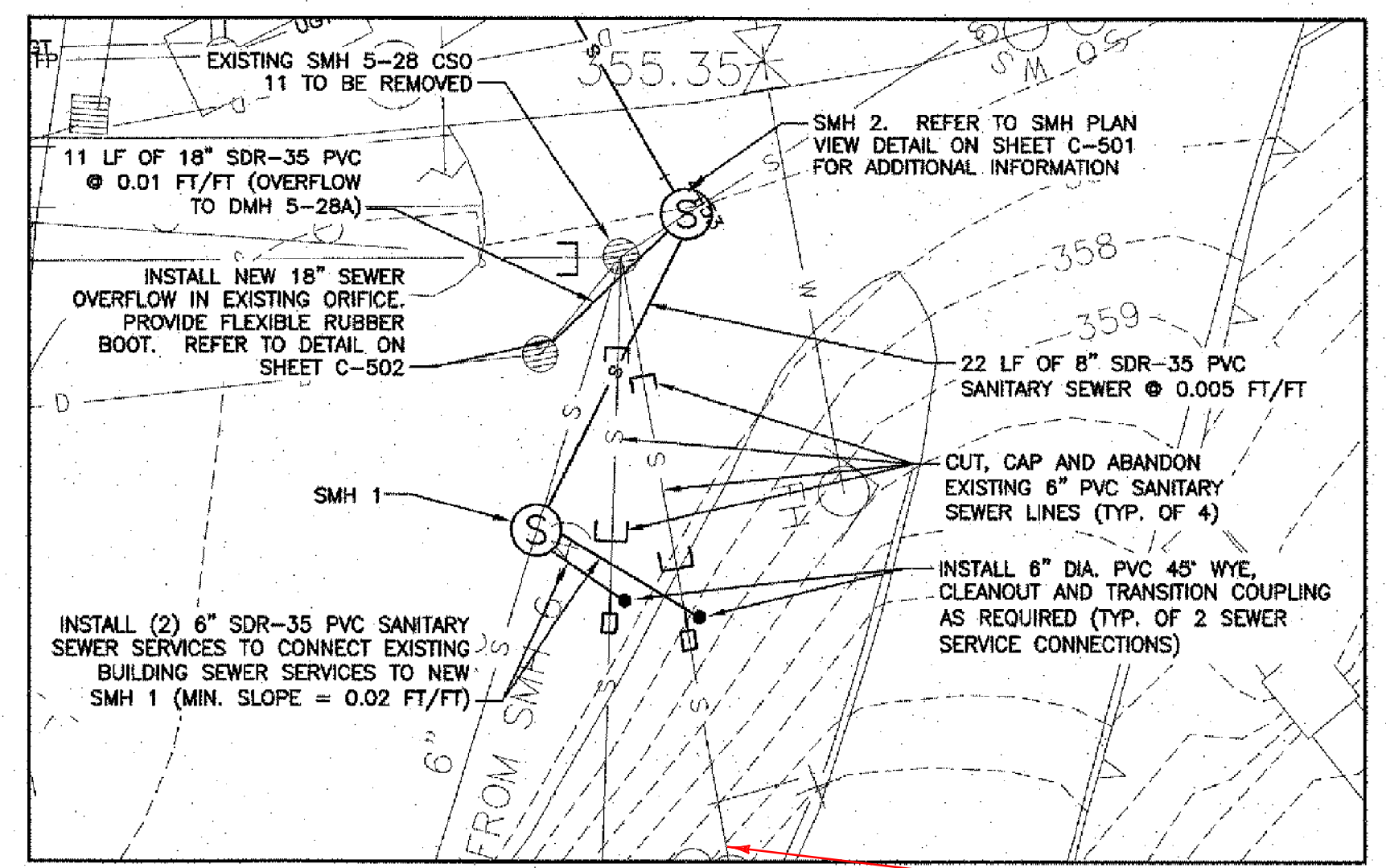
PROPOSED UTILITY PLAN
 NOT TO SCALE

LEGEND

- S SEWER MAIN
- SF REINFORCED SILT FENCE
- TRANSITION COUPLING
- CLEANOUT
- ⊕ INLET PROTECTION AT CB
- ⊙ SANITARY SEWER MANHOLE CAP
- ⊙ TYPE II STONE FILL
- ① PHOTO TARGET INDICATING NUMBER AND DIRECTION OF PHOTO

SEWER MANHOLE STRUCTURE TABLE

SMH 1 RIM = 356.7 INV. IN = TO BE DETERMINED (6" FROM EXISTING SMH 6-4) INV. IN = 350.0 (6" PVC SERVICE FROM NE) INV. IN = 350.0 (6" PVC SERVICE FROM NE) INV. OUT = 349.9
SMH 2 (5" DIA.) RIM = 356.0 INV. IN = 347.58 (FROM EXISTING SMH 5-29) INV. IN = 349.78 (FROM SMH 1) INV. OUT = 347.48 (TO SMH 3) INV. OUT = 347.53 (OUTFALL TO EXISTING DMH 5-28A) WEIR ELEV. = 349.13
SMH 3 RIM = 354.85 INV. IN = 348.55 INV. OUT = 346.45
SMH 4 RIM = 354.0 INV. IN = 348.4 (4" VC FROM OLD SERVICE) INV. IN = 346.14 (FROM SMH 3) INV. OUT = 346.04
SMH 5 RIM = 352.8 INV. IN = 345.7 (FROM SMH 4) INV. IN = 345.7 (FROM NEW CLEANOUT) INV. OUT = 345.6 (TO SMH 6)
SMH 6 RIM = 352.6 INV. IN = 345.2 (FROM EXISTING SMH 5-43) INV. IN = 345.1 (FROM SMH 5) INV. OUT = 345.0 (TO EXISTING SMH 3-22)



PARTIAL UTILITY PLAN
 NOT TO SCALE

THIS LINE FROM CHURCH & PARSONAGE RUN DIRECTLY TO SMH2



PHOTO 1
 NOT TO SCALE

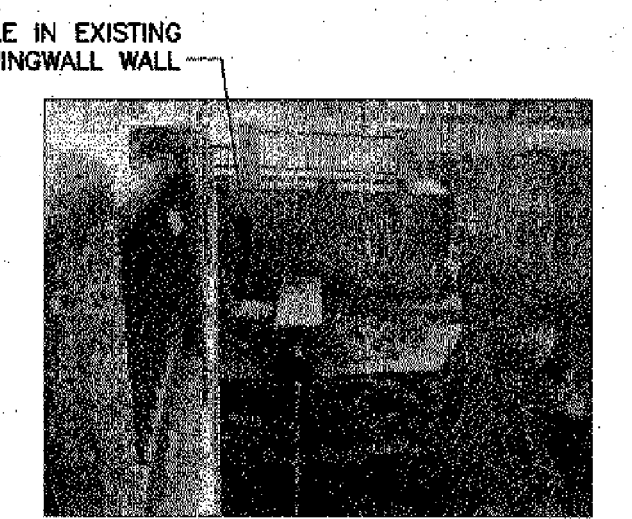


PHOTO 2
 NOT TO SCALE

FINAL DESIGN
 FEBRUARY 19, 2009