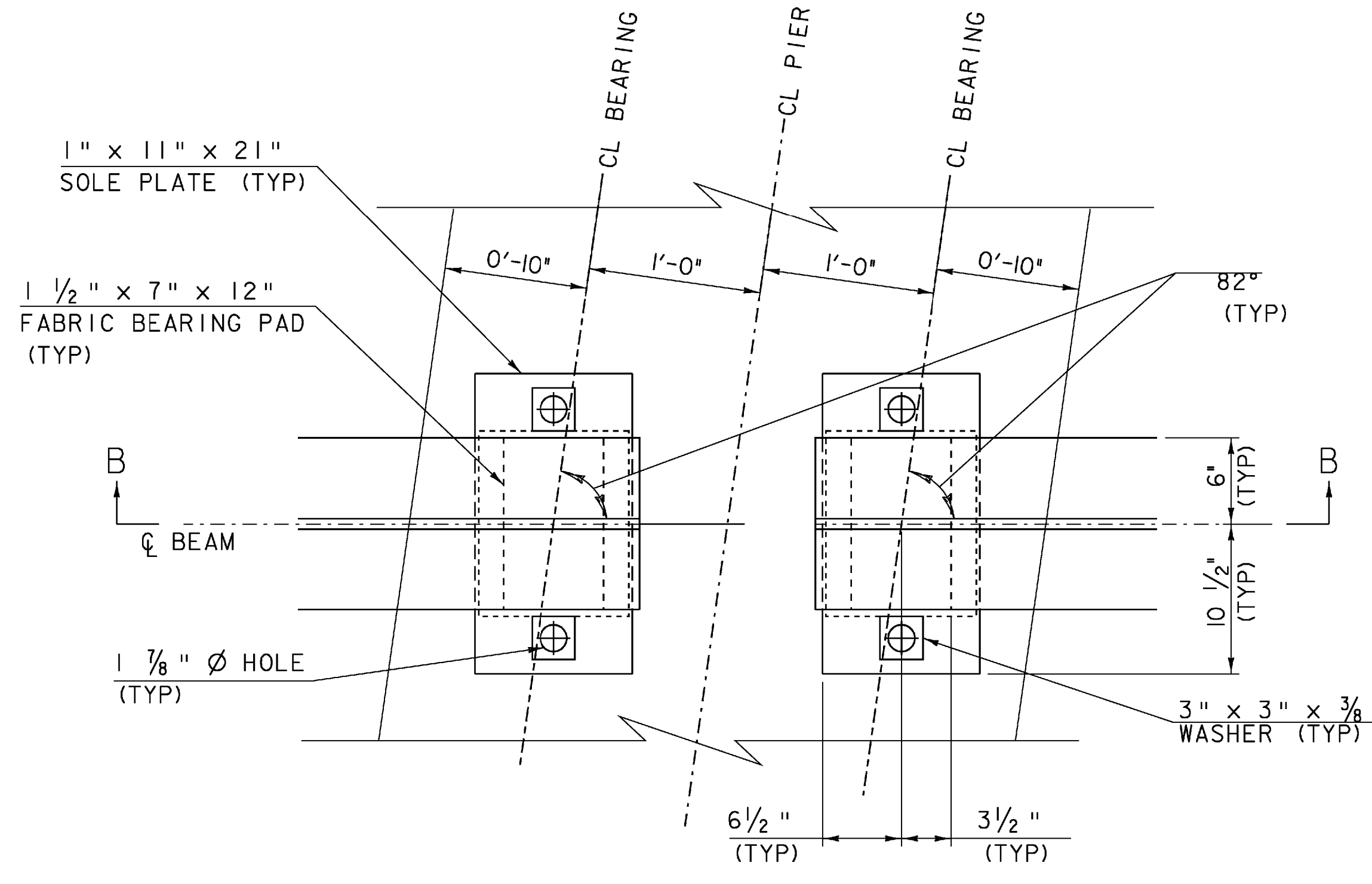
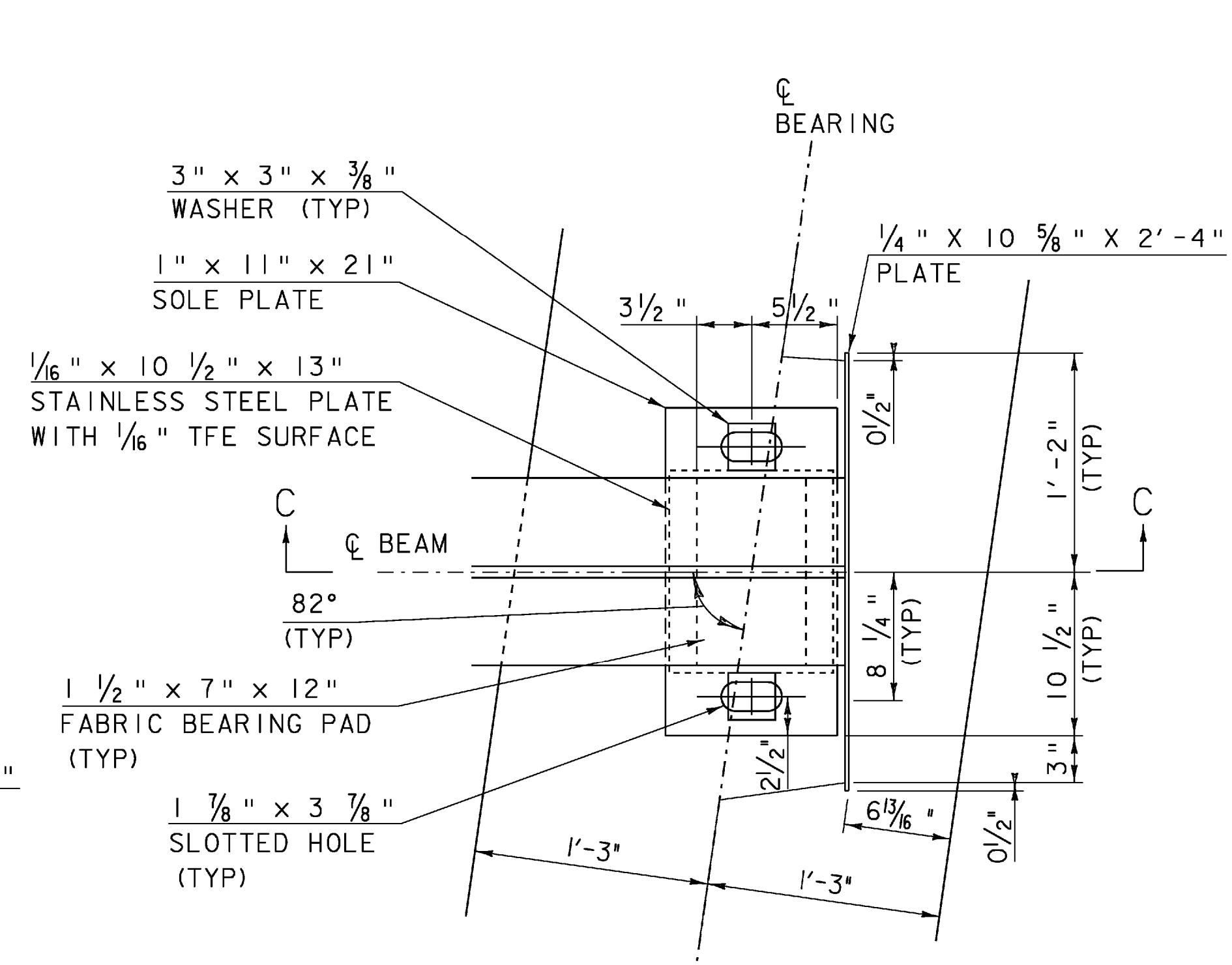


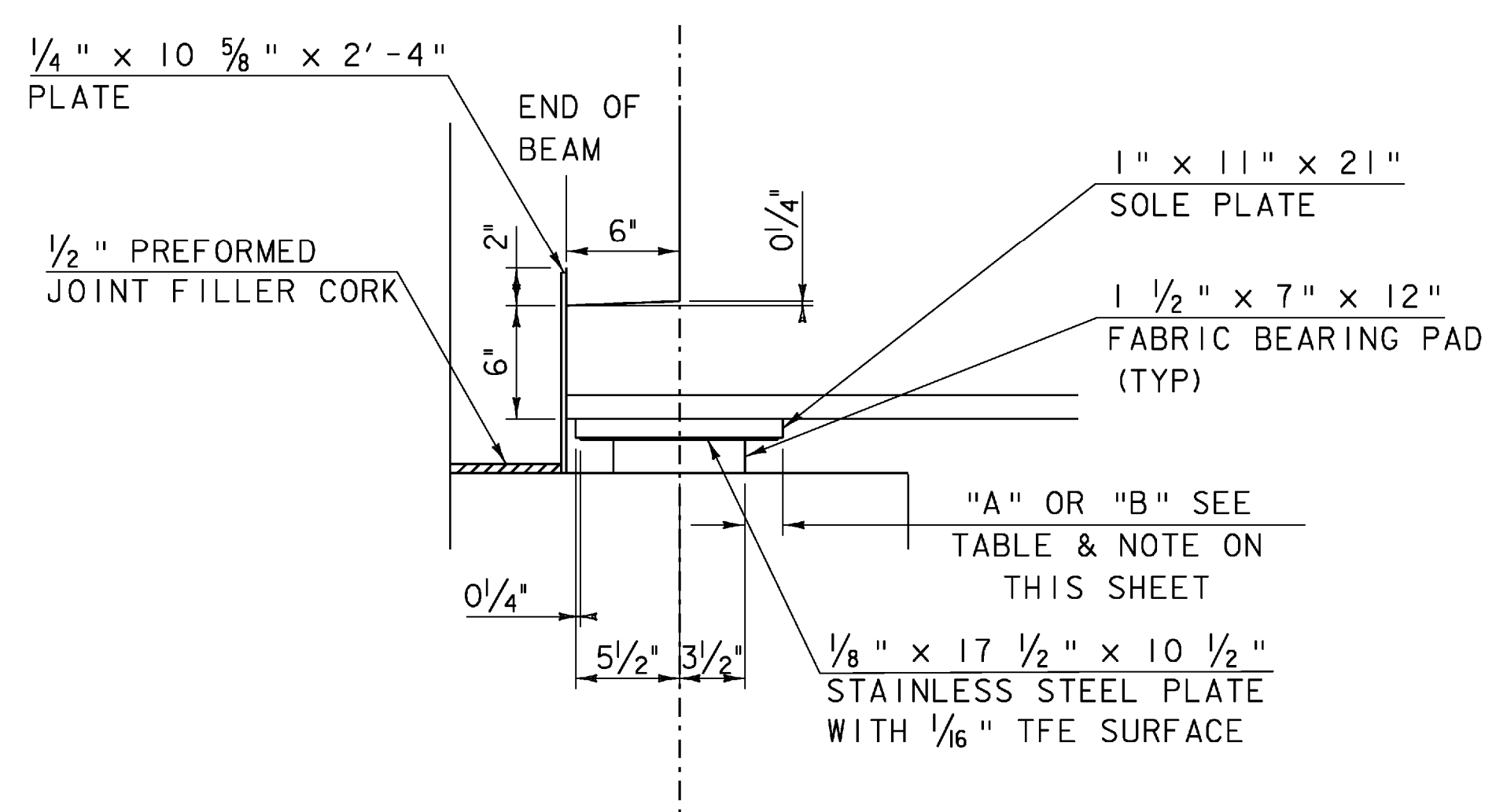
EXPANSION BEARING
BEAMS 1 AND 10
ABUTMENT 1
SCALE 1 1/2" = 1'-0"



FIXED BEARING
PIER 1 BEAMS 1 AND 10
PIER 2 BEAMS 11 AND 20
SCALE 1 1/2" = 1'-0"

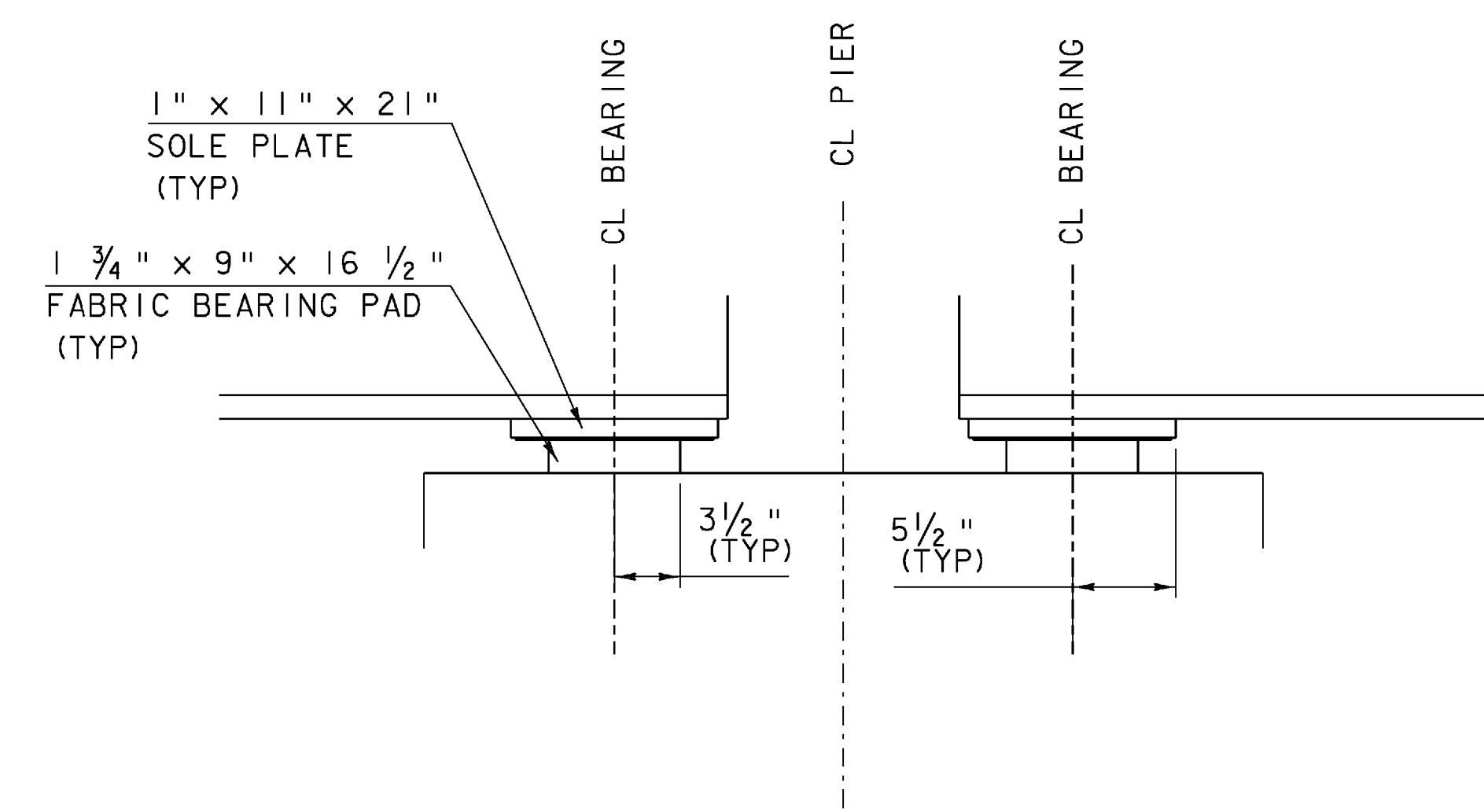


EXPANSION BEARING
BEAMS 11 AND 20
ABUTMENT 2
SCALE 1 1/2" = 1'-0"



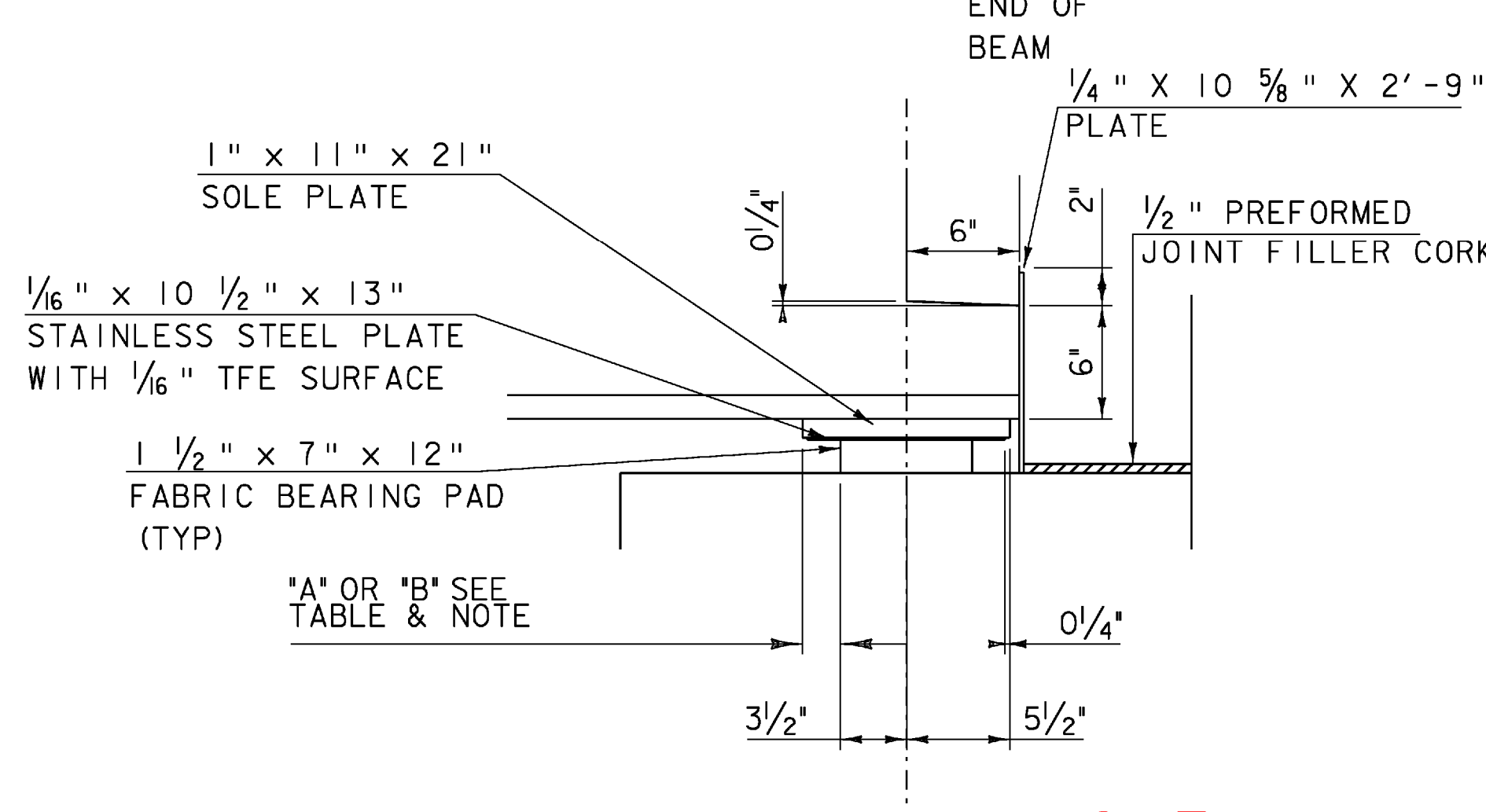
SECTION A-A
SCALE 1 1/2" = 1'-0"

BEAMS 1&10; 11 & 20		
TEMPERATURE	"A"	"B"
0	2 3/8"	2 5/8"
15	2 1/4"	2 1/2"
30	2 1/8"	2 3/8"
45	2"	2 1/4"
60	1 7/8"	2 1/8"
75	1 3/4"	2"
90	1 5/8"	1 7/8"
105	1 1/2"	1 3/4"



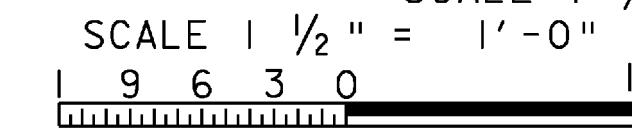
SECTION B-B
SCALE 1 1/2" = 1'-0"

NOTE:
THE "A" DISTANCE IS THE SOLE PLATE ADJUSTMENT TO BE USED BEFORE DEAD LOAD IS ADDED TO THE GIRDERS. THE "B" DISTANCE IS THE SOLE PLATE ADJUSTMENT TO BE USED AFTER THE DECK AND SIDEWALK HAVE BEEN POURED. THE DIFFERENCE IS THE THEORETICAL ELONGATION OF THE BOTTOM FLANGE DUE TO THE DEAD LOAD DEFLECTION FROM THE DECK AND SIDEWALK. THE FINAL "B" DISTANCE MUST BE REACHED WITHIN 1/8".



SECTION C-C
SCALE 1 1/2" = 1'-0"

VOID
REVISED
SHEET



PROJECT NAME: SPRINGFIELD	PLOT DATE: 04-MAR-2009
PROJECT NUMBER: BHF 016-2(14)	DRAWN BY: C. MOONEY
FILE NAME: s06j004sup.dgn	CHECKED BY: D. PETERSON
PROJECT LEADER: R. WHITCOMB	SHEET 33 OF 72
DESIGNED BY: C. CARLSON	
FASCIA BEARING DETAILS	