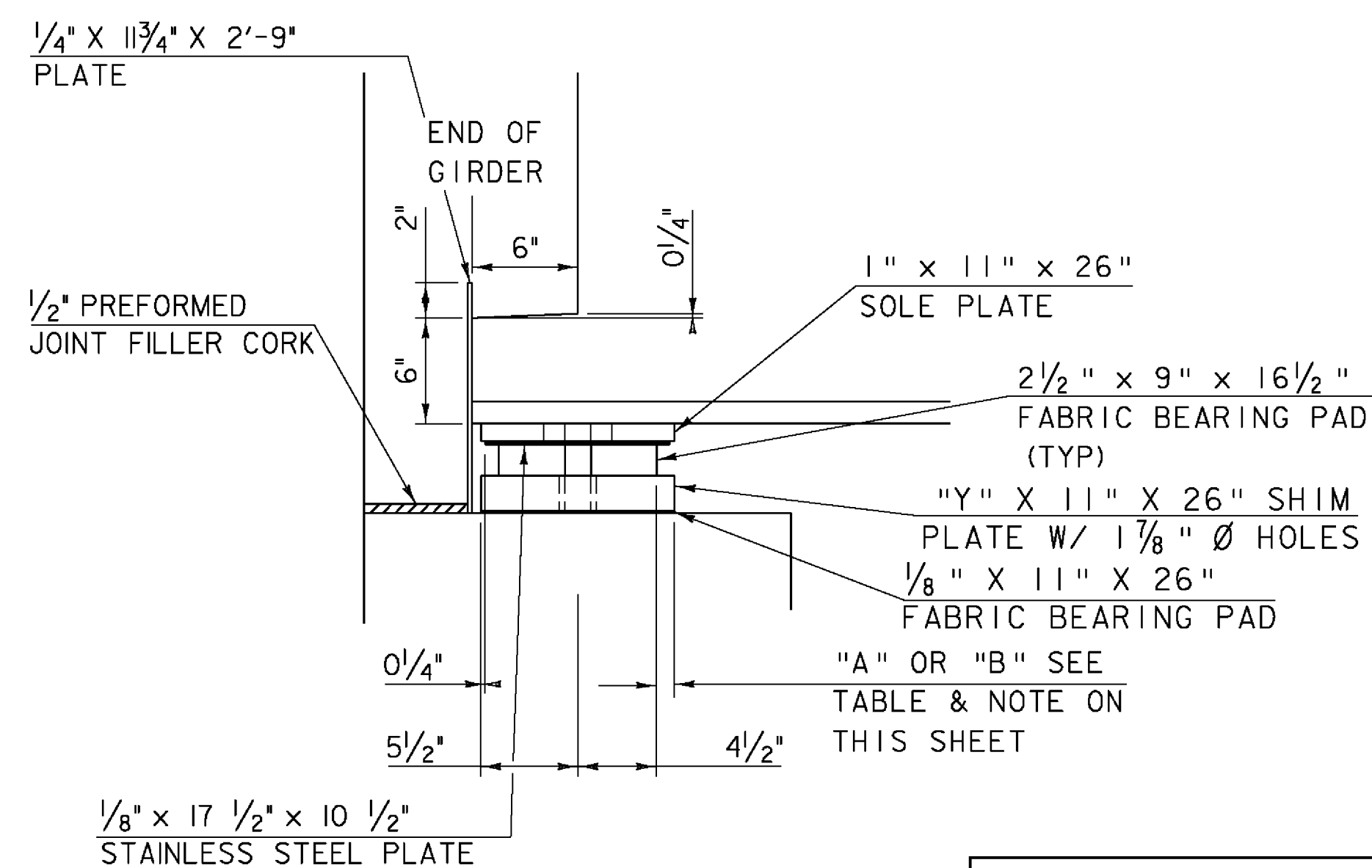
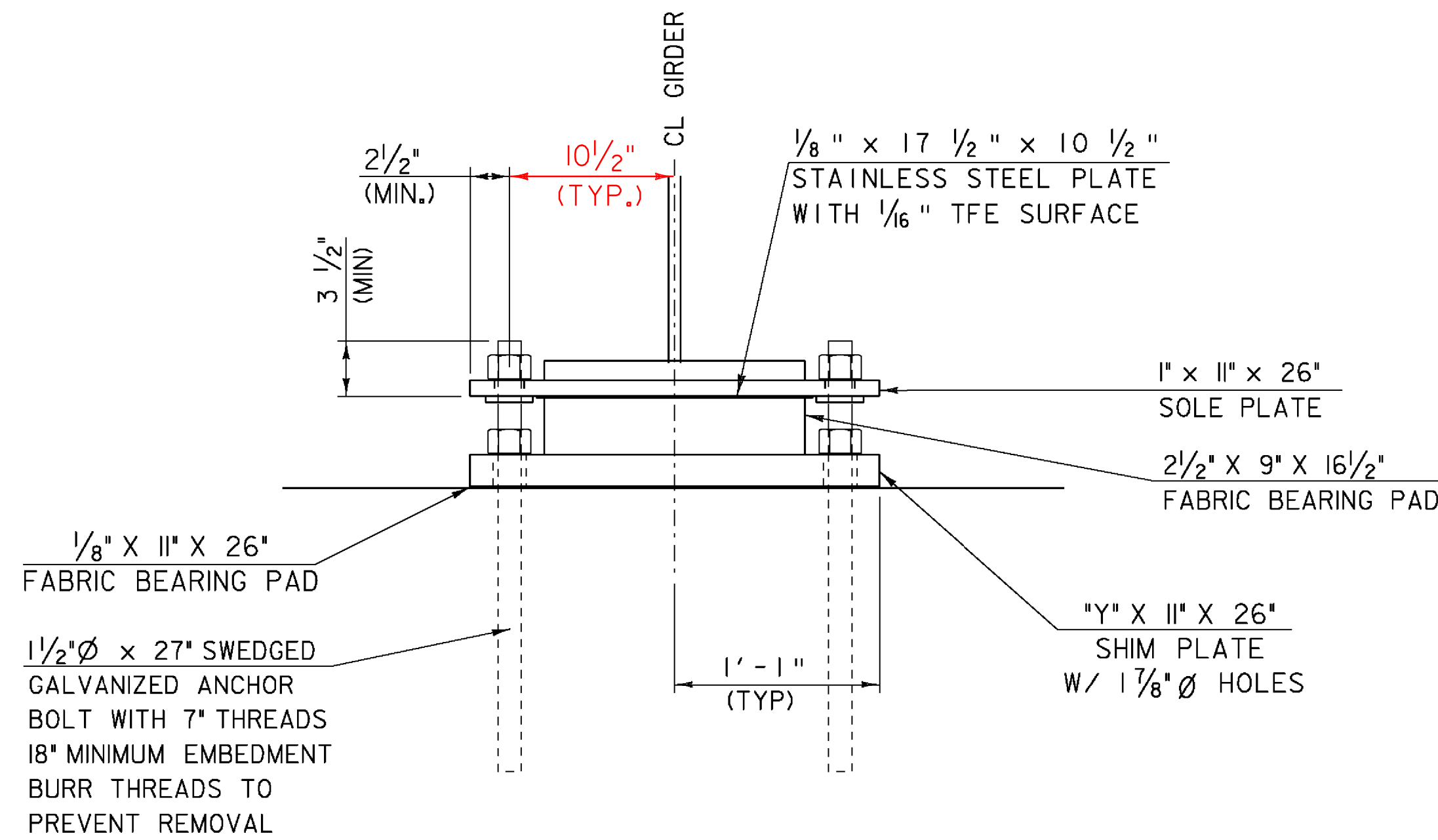


EXPANSION BEARING
GIRDERS 1 THROUGH 7
ABUTMENT 1
SCALE 1/2" = 1'-0"
(SHIM PLATE NOT SHOWN)

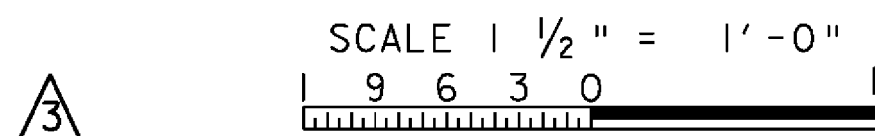


SECTION A-A
SCALE 1/2" = 1'-0"

GIRDERS 1 - 7 TEMPERATURE	"A"	"B"
0	1 5/8"	1 3/8"
15	1 1/2"	1 1/4"
30	1 3/8"	1 1/8"
45	1 1/4"	1"
60	1 1/8"	7/8"
75	1"	3/4"
90	7/8"	5/8"
105	3/4"	1/2"



SHIM PLATE DETAIL



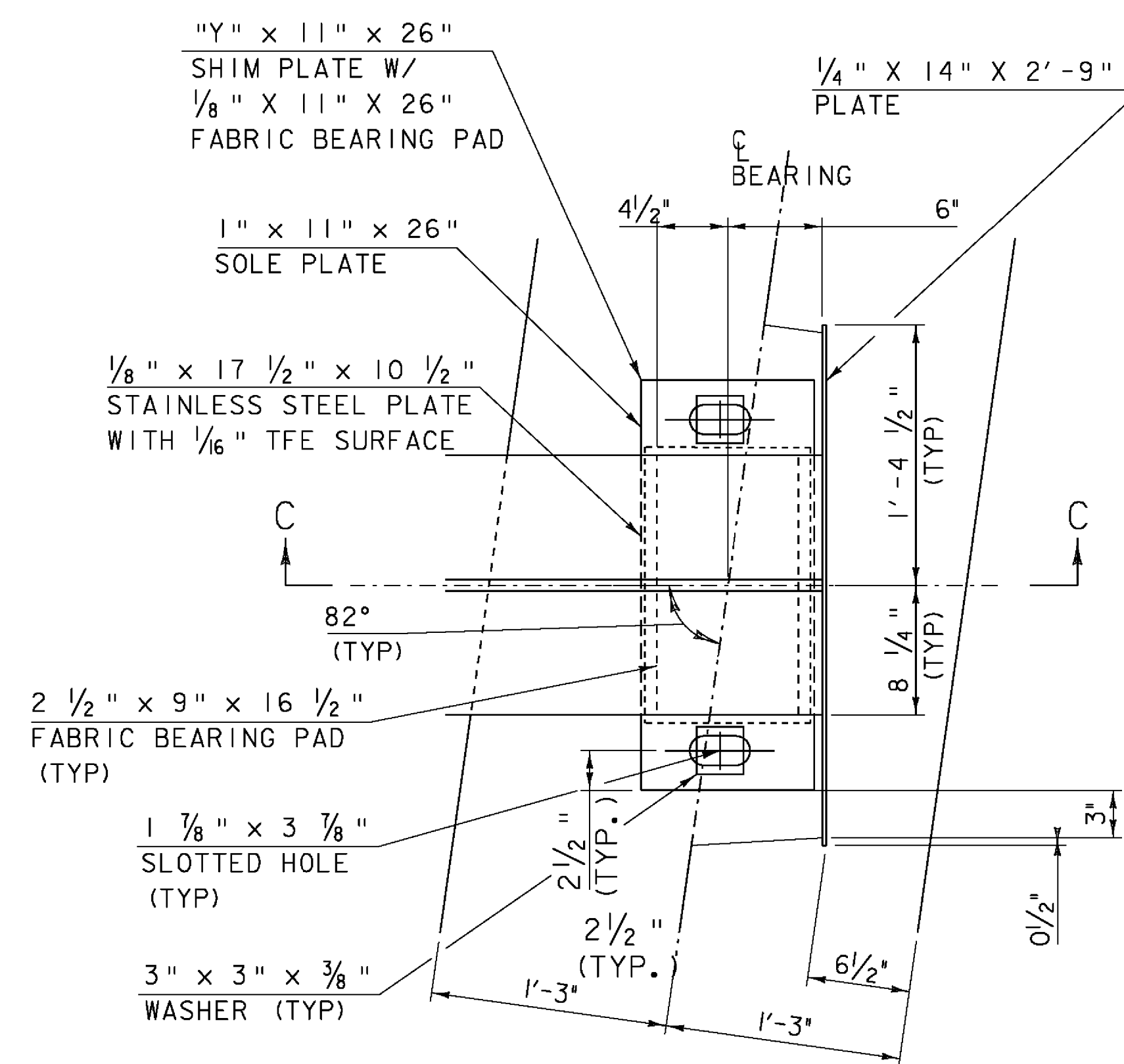
SHIM PLATES @ ABUT. 1 & 2

GIRDER NO.	ABT. NO. 1 "Y"	ABT. NO. 2 "Y"
1	2 1/2"	2"
2	2"	1 1/2"
3-7	2 1/2"	2"

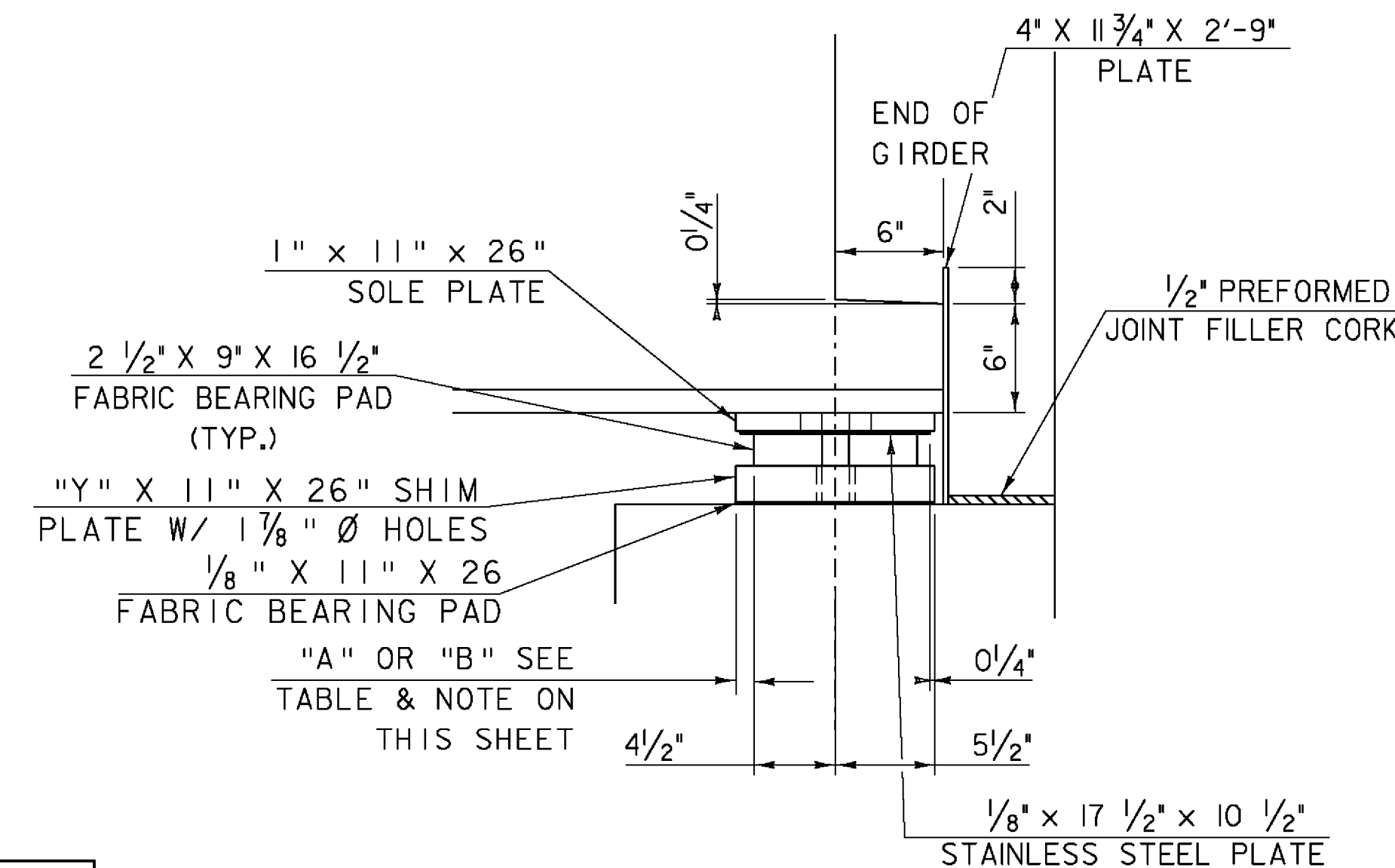
SHIM PLATES SHALL BE CONSIDERED INCIDENTAL TO ITEM 531.10, BEARING DEVICE ASSEMBLY, PREFORMED FABRIC PAD

REV.	BY	DATE	DESCRIPTION
3	LBB	5/26/09	REVISED - ADDED SHIM PLATE

NOTE:
THE "A" DISTANCE IS THE SOLE PLATE ADJUSTMENT TO BE USED BEFORE DEAD LOAD IS ADDED TO THE GIRDERS. THE "B" DISTANCE IS THE SOLE PLATE ADJUSTMENT TO BE USED AFTER THE DECK AND SIDEWALK HAVE BEEN POURED. THE DIFFERENCE IS THE THEORETICAL ELONGATION OF THE BOTTOM FLANGE DUE TO THE DEAD LOAD DEFLECTION FROM THE DECK AND SIDEWALK. THE FINAL "B" DISTANCE MUST BE REACHED WITHIN 1/8".



EXPANSION BEARING
GIRDERS 8 THROUGH 14
ABUTMENT 2
SCALE 1/2" = 1'-0"
(SHIM PLATE NOT SHOWN)



SECTION C-C

SCALE 1/2" = 1'-0"

PROJECT NAME: SPRINGFIELD	PLOT DATE: 29-MAY-2009
PROJECT NUMBER: BHF 016-2(14)	DRAWN BY: C. MOONEY
FILE NAME: s06j004sup.dgn	CHECKED BY: D. PETERSON
PROJECT LEADER: R. WHITCOMB	SHEET 32 OF 72
DESIGNED BY: C. CARLSON	
INTERIOR BEARING DETAILS	