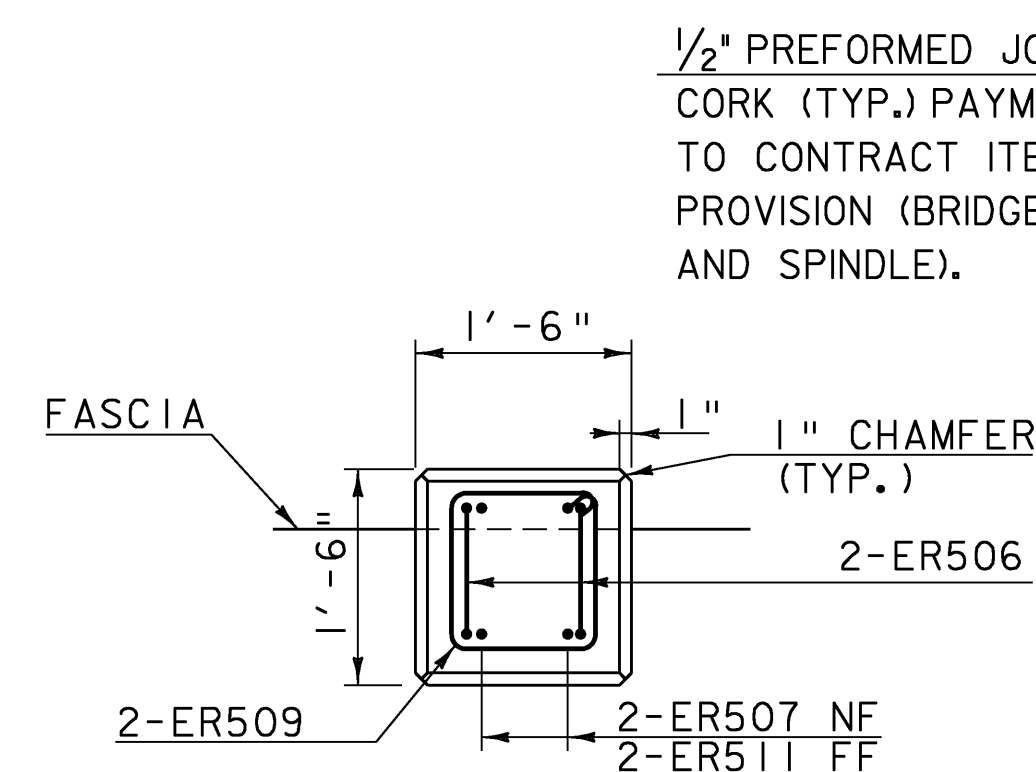
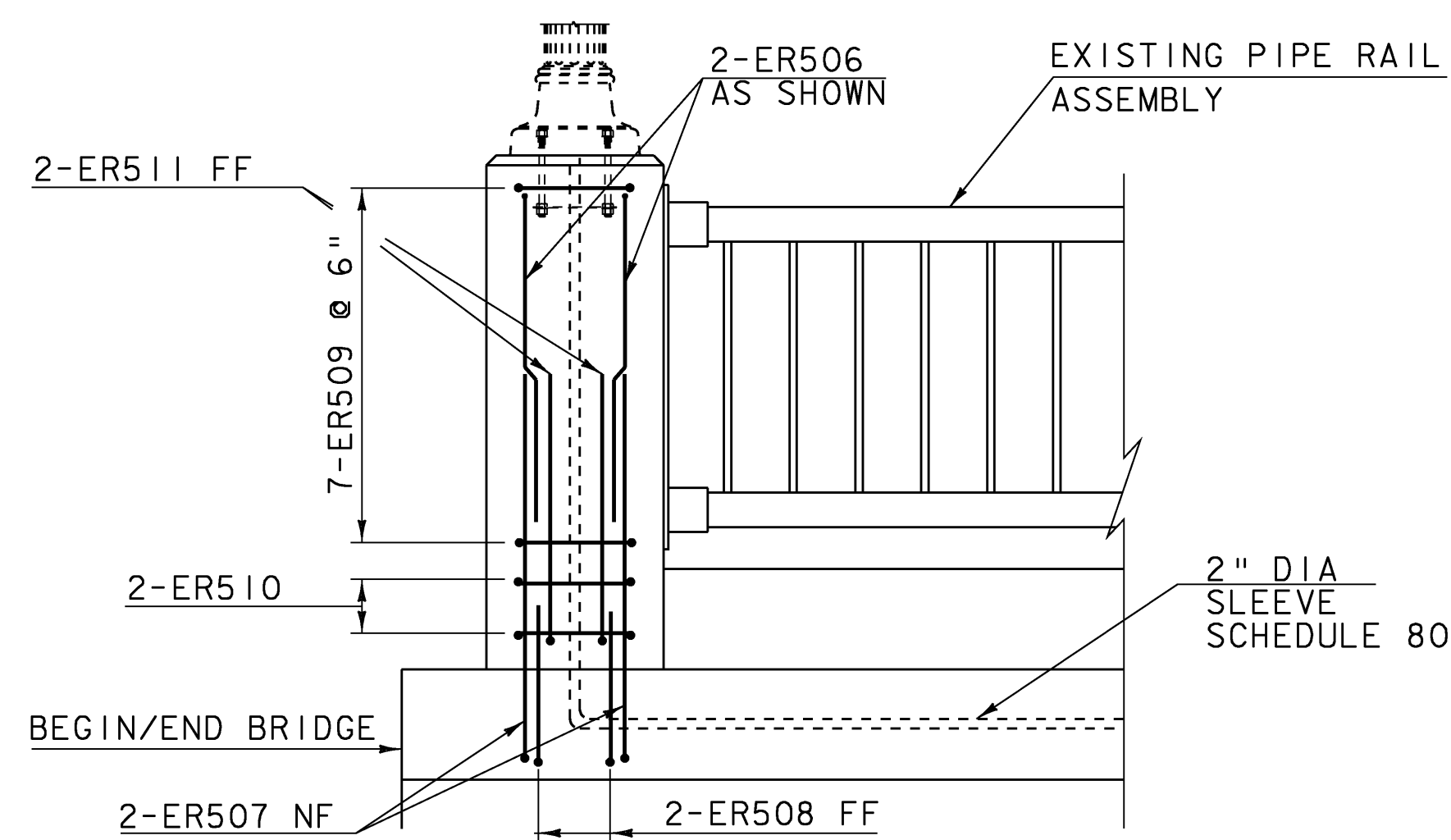


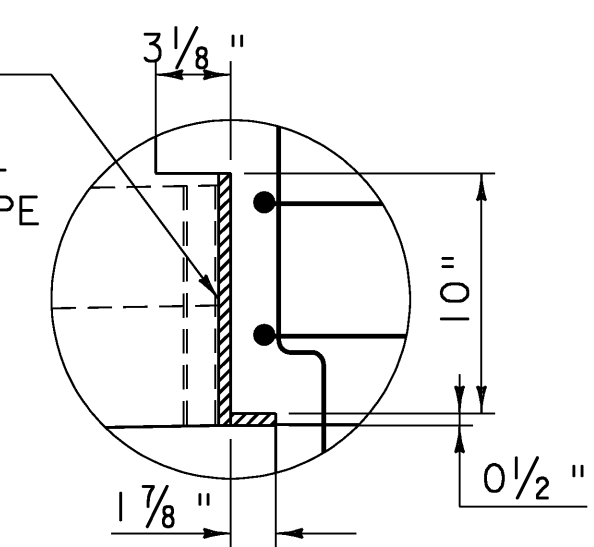
**END POST DETAILS**

SCALE  $\frac{3}{4}$ " = 1'-0"



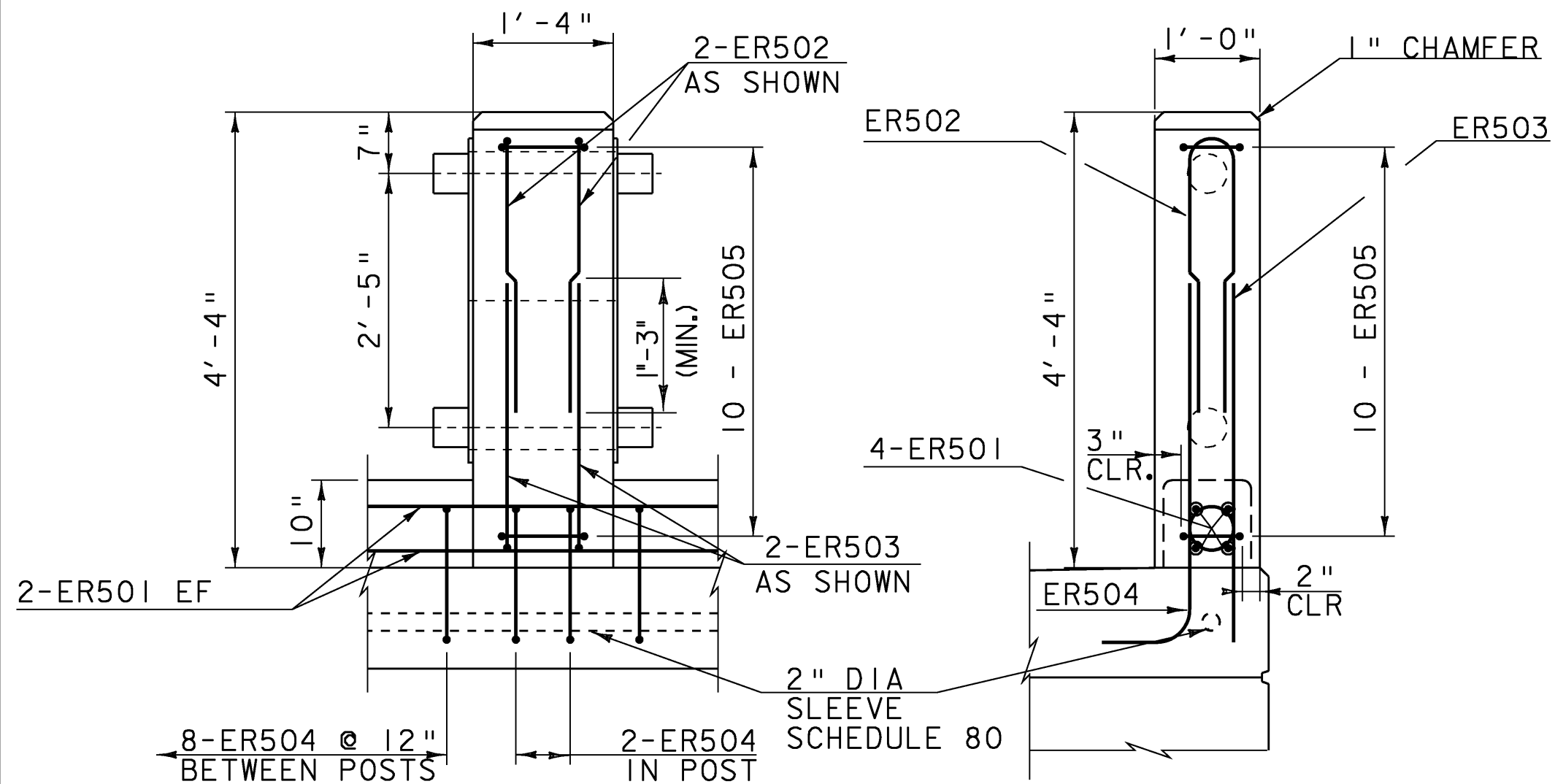
**SECTION B-B**

SCALE  $\frac{3}{4}$ " = 1'-0"



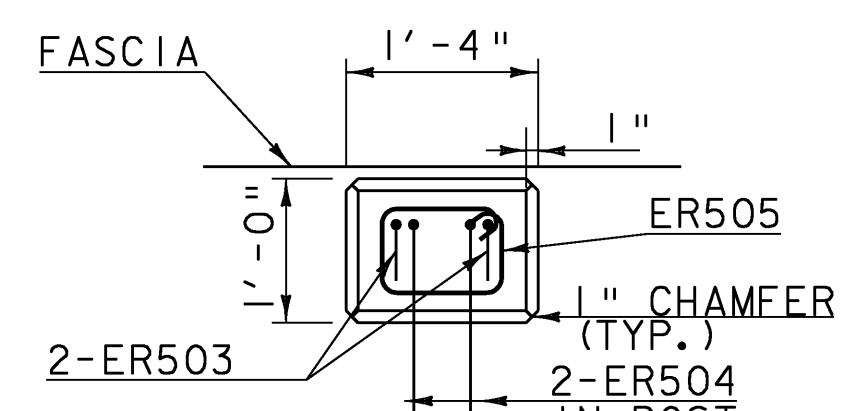
**DETAIL A**

SCALE 1 1/2" = 1'-0"

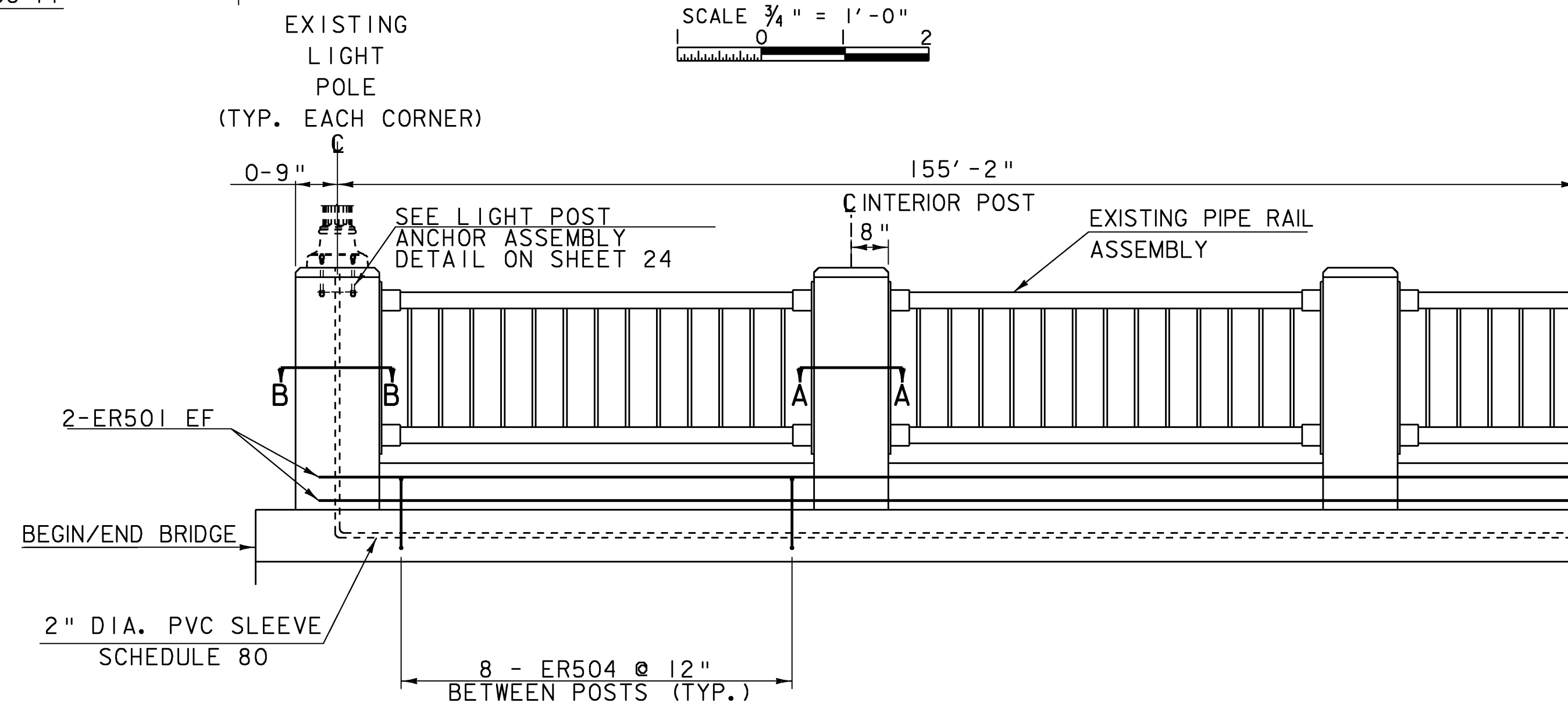


**INTERIOR POST DETAIL**

SCALE  $\frac{3}{4}$ " = 1'-0"



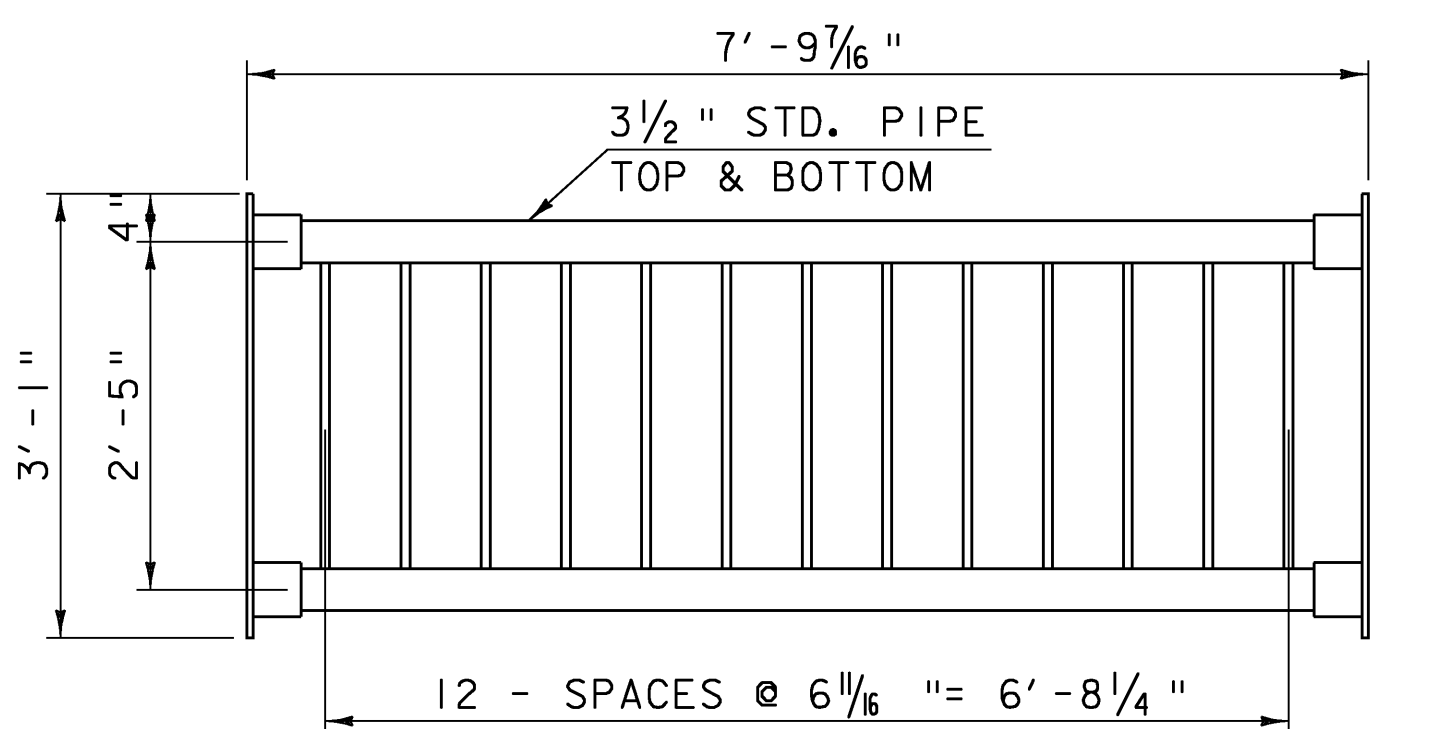
**SECTION A-A**



**BRIDGE RAIL ELEVATION**

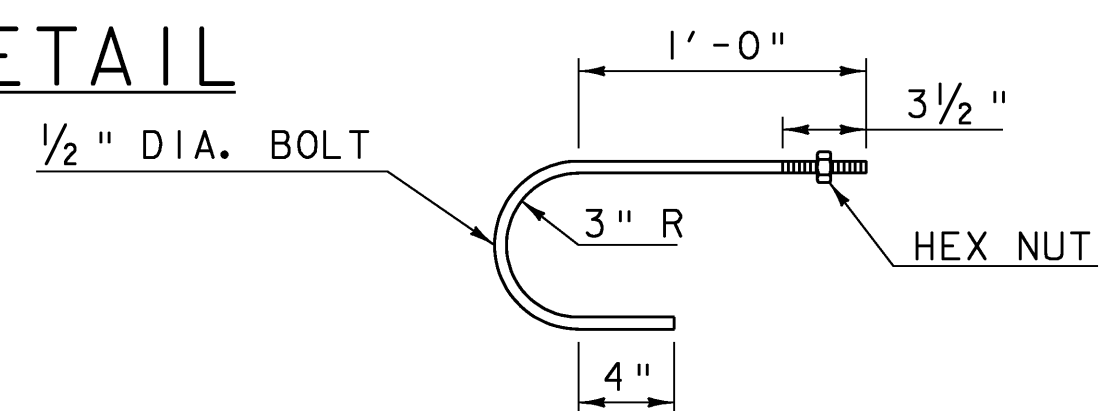
SCALE 1/2" = 1'-0"

SEE THE GENERAL NOTES, SHEET 3 FOR INFORMATION REGARDING THE EXISTING PIPE RAILING.



**EXISTING PIPE RAIL DETAIL**

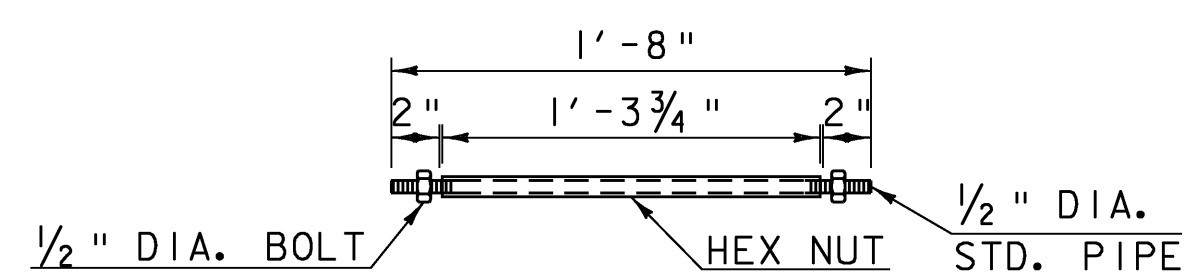
SCALE  $\frac{3}{4}$ " = 1'-0"



**HOOK BOLT DETAIL**

SCALE 1 1/2" = 1'-0"

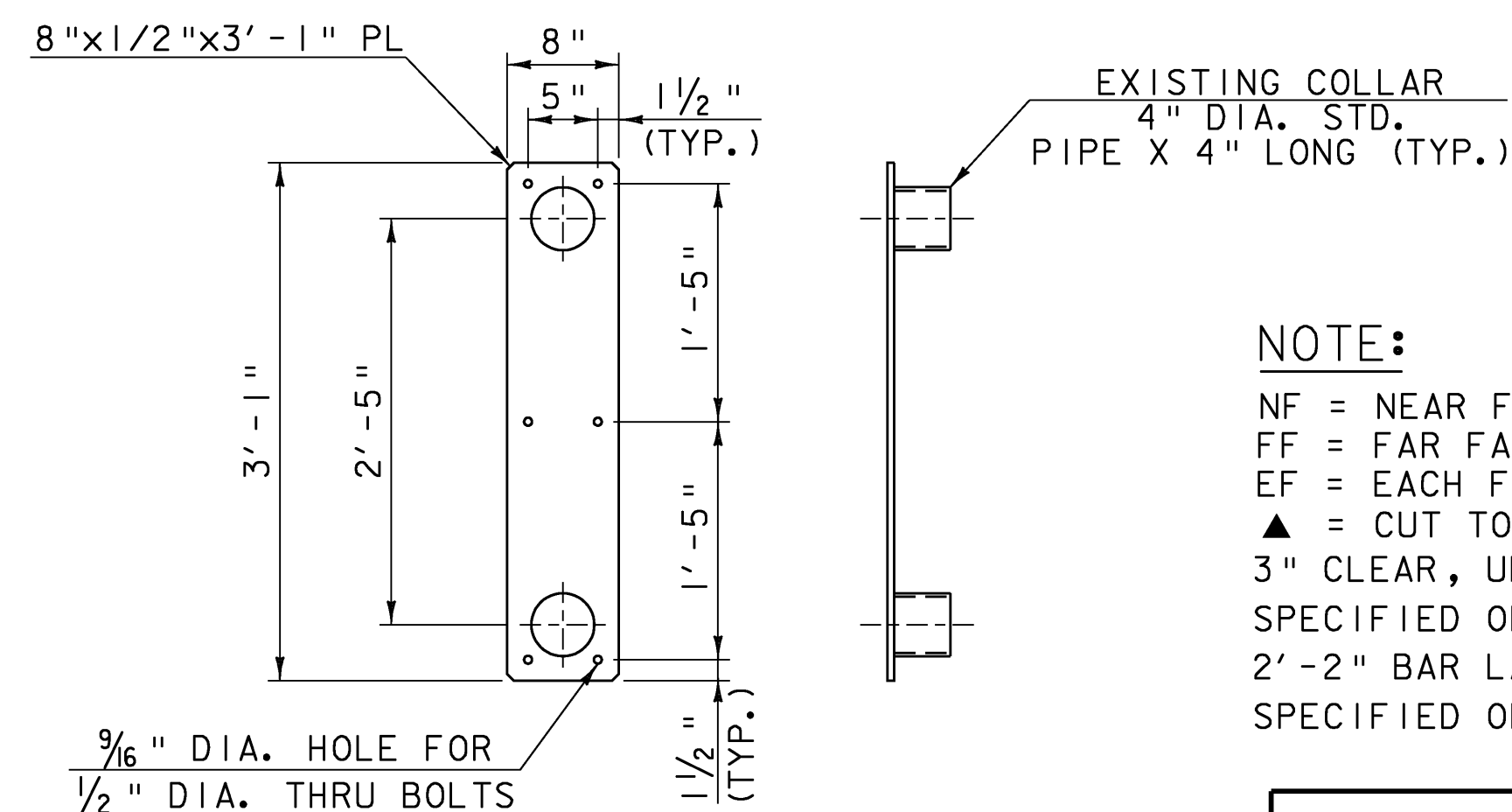
(USE 6 AT EACH END POST LOCATION)



**THRU BOLT DETAIL**

SCALE 1 1/2" = 1'-0"

(USE 6 AT EACH INTERIOR POST LOCATION)



**EXISTING PLATE AND COLLAR DETAIL**

SCALE 1" = 1'-0"

**NOTE:**

- NF = NEAR FACE
- FF = FAR FACE
- EF = EACH FACE
- ▲ = CUT TO FIT IN FIELD
- 3" CLEAR, UNLESS OTHERWISE SPECIFIED ON THE PLANS.
- 2'-2" BAR LAP UNLESS OTHERWISE SPECIFIED ON THE PLANS.

PROJECT NAME: Springfield  
PROJECT NUMBER: BHF 016-2(14)

FILE NAME: s06j004rall.dgn  
PROJECT LEADER: R. WHITCOMB  
DESIGNED BY: D. PETERSON  
BRIDGE RAIL DETAILS

PLOT DATE: 04-MAR-2009  
DRAWN BY: D. PETERSON  
CHECKED BY: C. CARLSON  
SHEET 31 OF 72