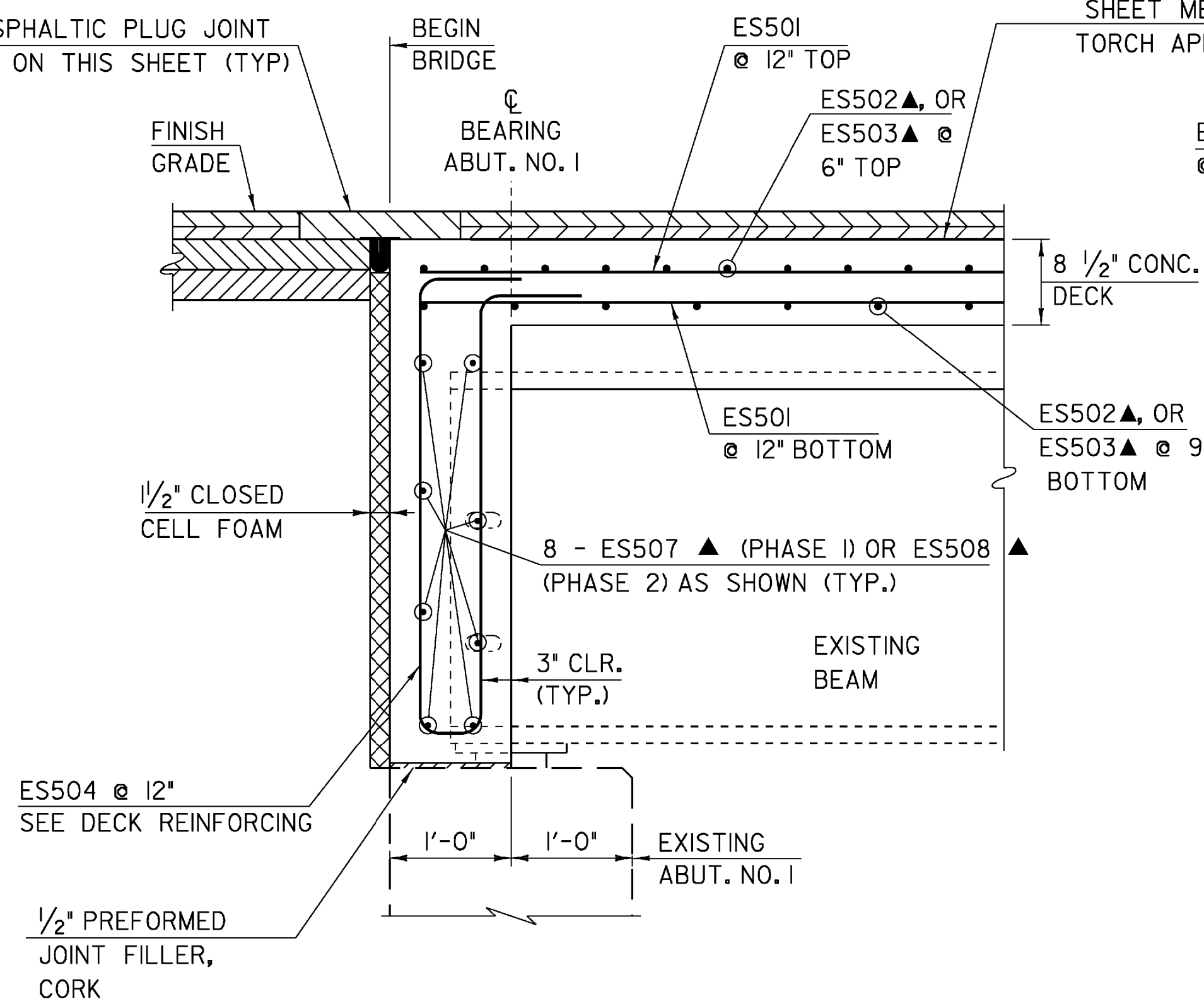


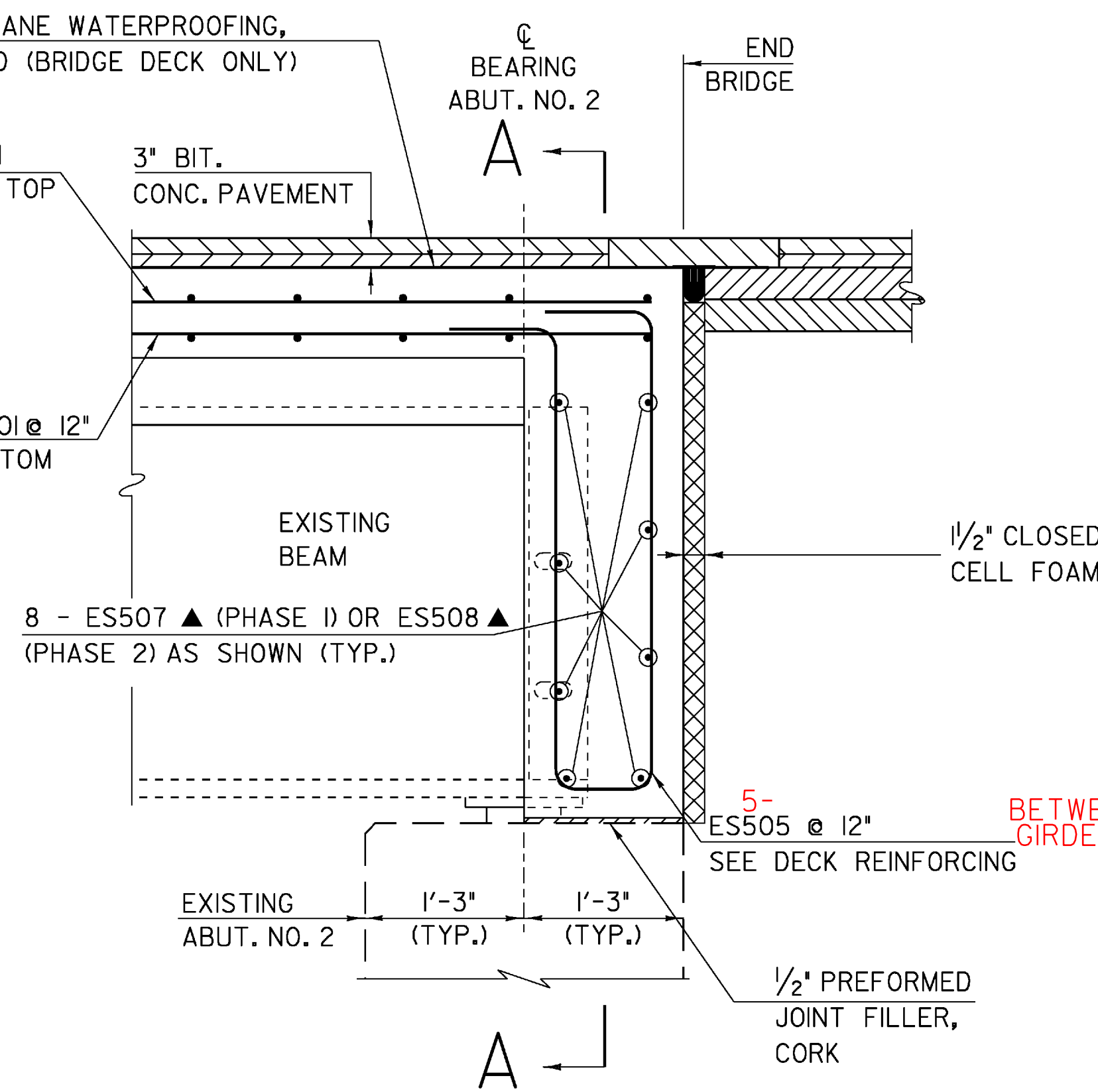
SEE ASPHALTIC PLUG JOINT
DETAIL ON THIS SHEET (TYP)



**ABUTMENT NO. 1
BRIDGE END DETAIL**

SCALE 1" = 1'-0"
1 9 6 3 0 2

SHEET MEMBRANE WATERPROOFING,
TORCH APPLIED (BRIDGE DECK ONLY)



**ABUTMENT NO. 2
BRIDGE END DETAIL**

SCALE 1" = 1'-0"
1 9 6 3 0 2

ASPHALTIC PLUG JOINT NOTES

1. INSTALLATION

A. LOCATE THE JOINT CENTRALLY OVER THE DECK EXPANSION GAP OR FIXED JOINT MARKED OUT TO THE MANUFACTURER'S RECOMMENDED WIDTH.

B. REMOVE THE BITUMINOUS CONCRETE PAVEMENT FULL DEPTH AS SHOWN ON THE PLANS. THE PAVEMENT SHALL BE DRY AND SAW CUT TO THE LIMITS REQUIRED TO PLACE THE JOINT. A PNEUMATIC HAMMER AND CHISEL MAY BE USED ADJACENT TO THE CURB ONLY WHEN SAW CUTTING IS NOT POSSIBLE.

C. BLAST CLEAN THE JOINT AREA OF DEBRIS AND ASPHALT. THOROUGHLY DRY THE JOINT AREA WITH COMPRESSED AIR PRIOR TO APPLYING BINDER MATERIAL.

D. REPAIR SPALLED AND DEFECTIVE CONCRETE WITH AN APPROVED MATERIAL AS AGREED UPON BY THE ENGINEER.
E. PLACE PROPERLY SIZED HEAT RESISTANT BACKER ROD IN THE MOVEMENT GAP ALLOWING FOR 1" +/- OF BINDER ABOVE THE ROD.

F. HEAT AND PLACE THE BINDER MATERIAL AS RECOMMENDED BY THE MANUFACTURER.

G. PLACE 1/4" THICK BY 8" WIDE SECTIONS OF STEEL PLATE OVER THE CENTER OF THE MOVEMENT GAP. SECURE THE PLATES FROM MOVING BY INSERTING LOCATING PINS THROUGH THE PRESTAMPED HOLES INTO BACKER ROD AND COVER WITH HOT BINDER.

H. HEAT AND MIX THE BINDER MATERIAL AND AGGREGATE AS RECOMMENDED BY THE MANUFACTURER.

I. INSTALLATION OF MATERIAL, COMPACTION, AND TOP COATING SHALL BE AS RECOMMENDED BY THE MANUFACTURER.

J. IMMEDIATELY AFTER TOP COATING, CAST AN ANTI-SKID MATERIAL OVER THE JOINT TO REDUCE THE RISK OF TRACKING.

K. PROTECT JOINT FROM TRAFFIC UNTIL THE MATERIAL HAS COOLED TO 51 DEG C (125 DEG F) +/-.

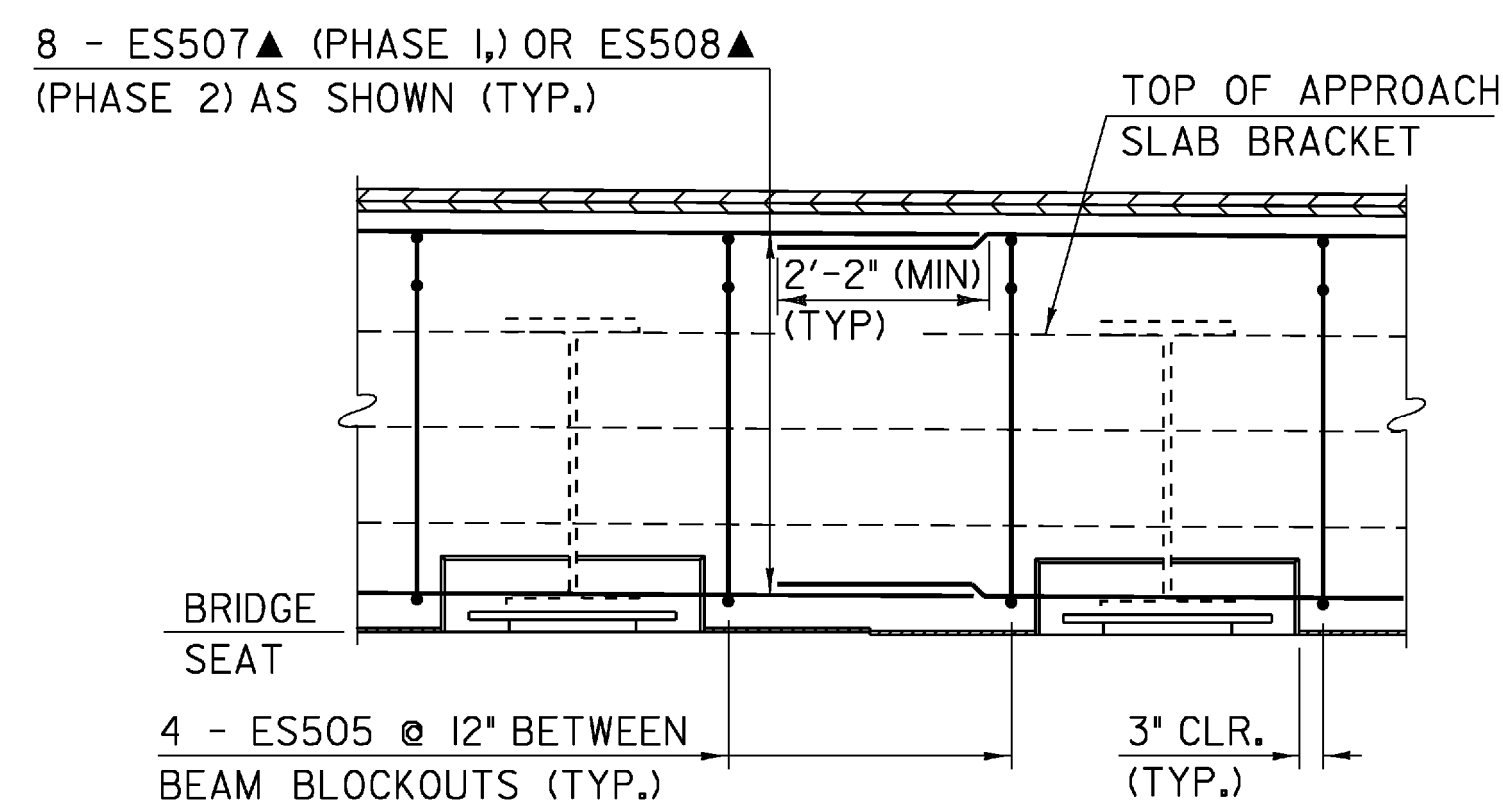
2. WEATHER LIMITATIONS.

(APPLY BINDER MATERIAL ONLY WHEN THE FOLLOWING CONDITIONS PREVAIL OR AS RECOMMENDED BY THE MANUFACTURER):

A. THE AMBIENT AIR TEMPERATURE IS AT LEAST 10 DEG C (50 DEG F) AND RISING.

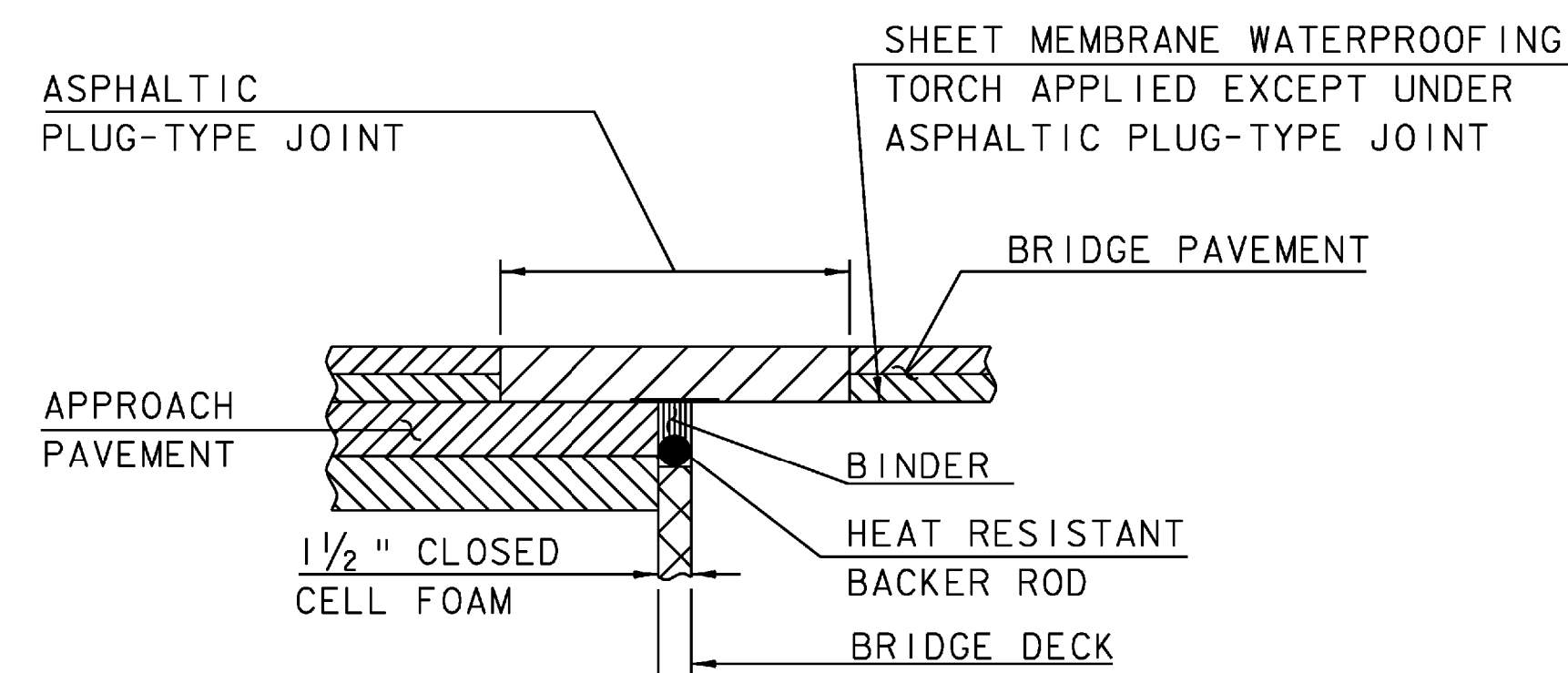
B. THE ROAD SURFACE IS DRY.

C. WEATHER CONDITIONS OR OTHER CONDITIONS ARE FAVORABLE AND ARE EXPECTED TO REMAIN SO FOR THE PERFORMANCE OF SATISFACTORY WORK.



SECTION A-A

SCALE 1/2" = 1'-0"
1 0 1 2



**ASPHALTIC PLUG-TYPE
JOINT DETAIL**

(NOT TO SCALE)

NOTE:

NF = NEAR FACE
FF = FAR FACE
EF = EACH FACE
▲ = CUT TO FIT IN FIELD
3" CLEAR, UNLESS OTHERWISE SPECIFIED ON THE PLANS.
2'-2" BAR LAP UNLESS OTHERWISE SPECIFIED ON THE PLANS.

PROJECT NAME: SPRINGFIELD

PROJECT NUMBER: BHF 016-2(14)

FILE NAME: s06j004sup.dgn
PROJECT LEADER: R. WHITCOMB
DESIGNED BY: C. CARLSON
BRIDGE END DETAILS

PLOT DATE: 04-MAR-2009
DRAWN BY: D. PETERSON
CHECKED BY: C. CARLSON
SHEET 30 OF 72