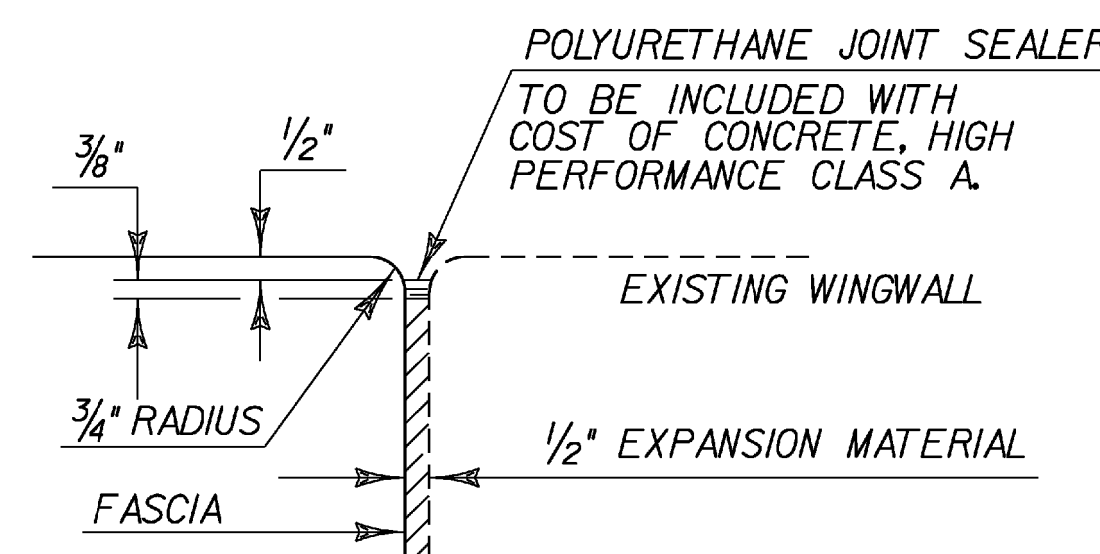
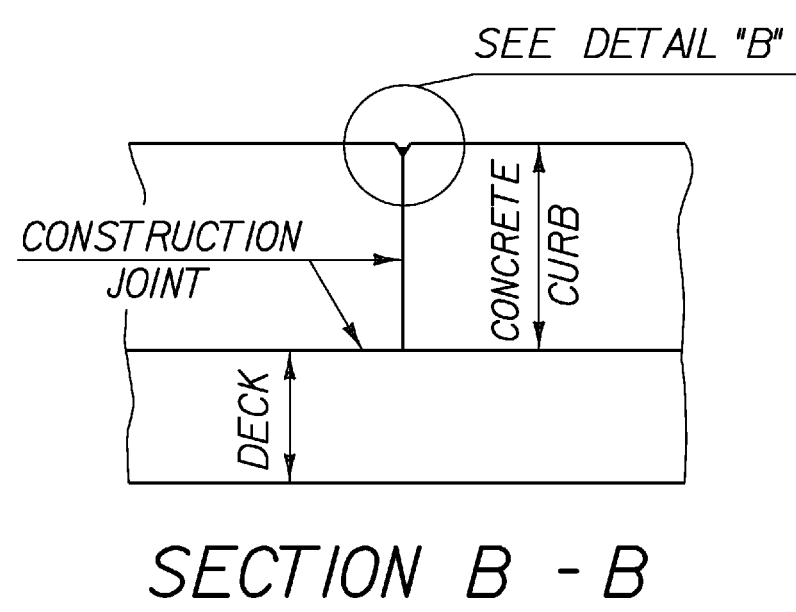
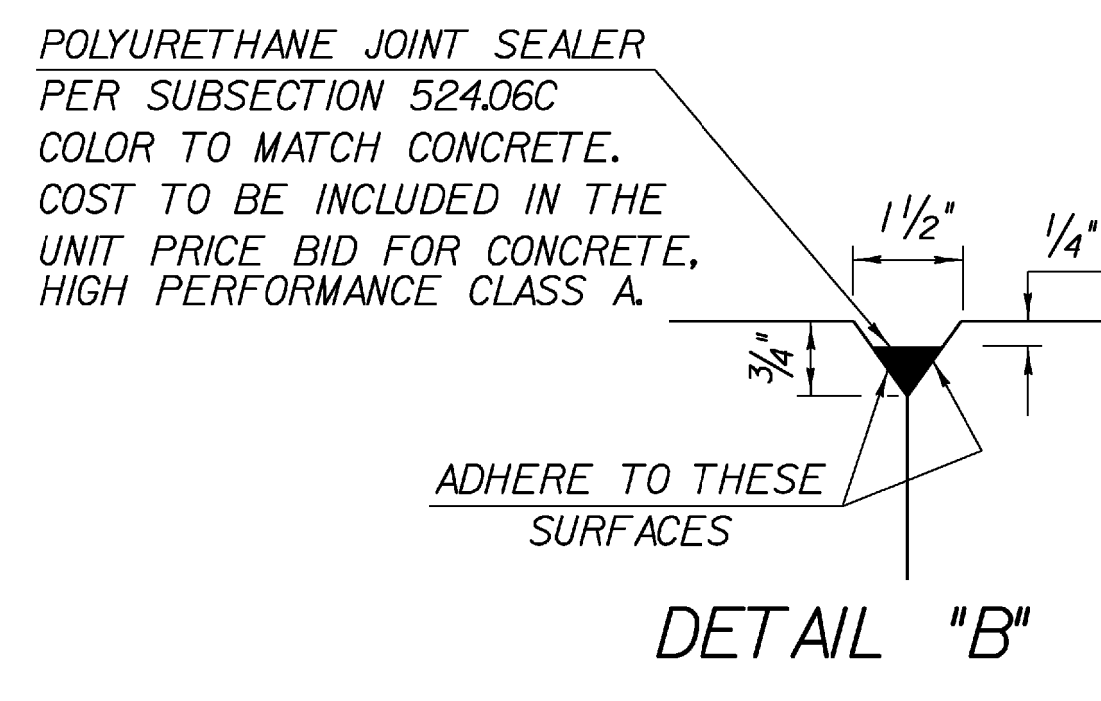


**LONGITUDINAL BRIDGE SLAB
CONSTRUCTION JOINT DETAIL**

SCALE 1" = 1'-0"
9 6 3 0 2

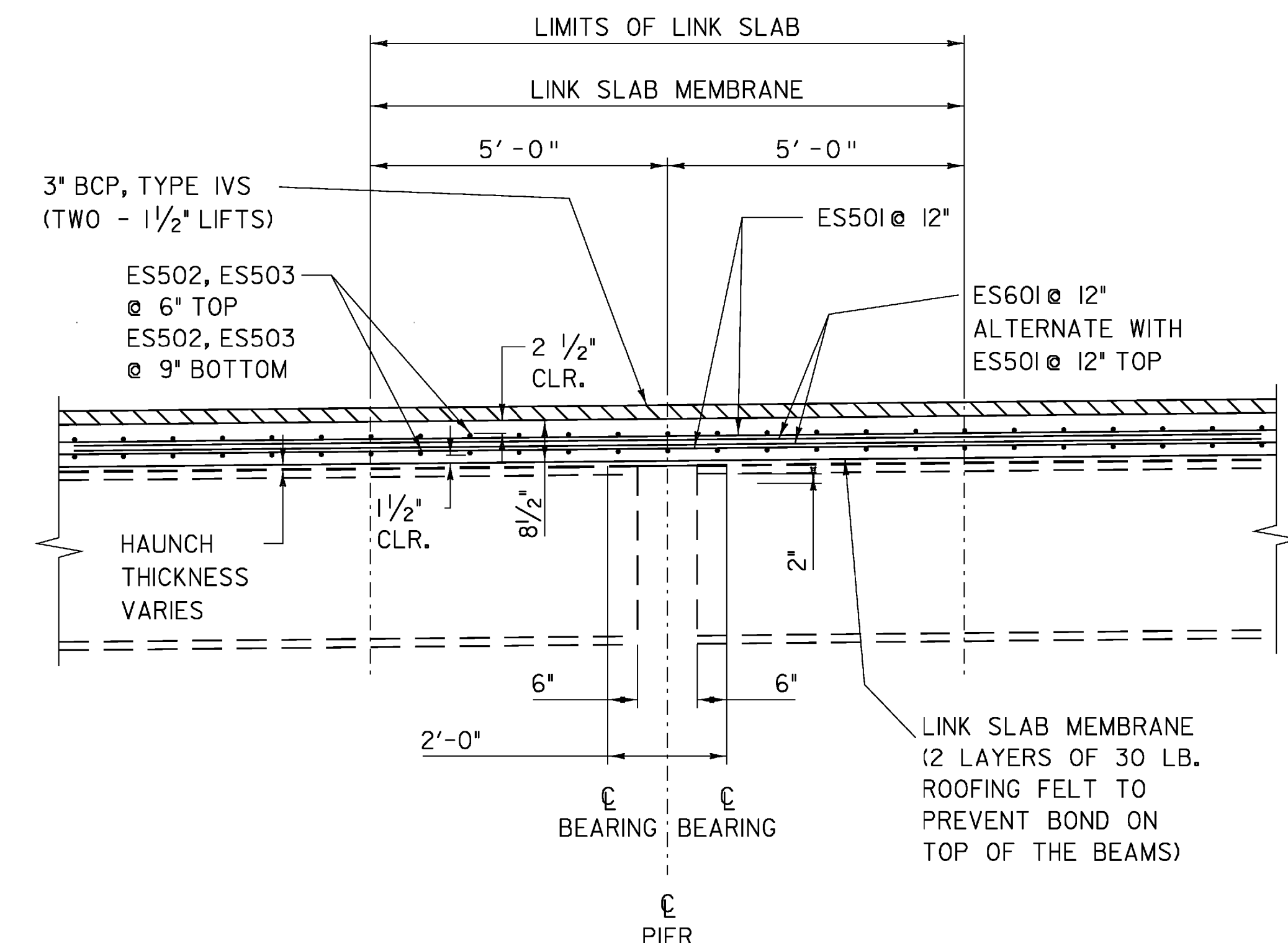


**JOINT BETWEEN FASCIA
AND WINGWALL**



SIDEWALK NOTES:

1. CONCRETE CURBS MAY BE PLACED IN ONE CONTINUOUS OPERATION. IF AN APPROVED SHRINKAGE REDUCING ADMIXTURE LISTED IN THE SPECIAL PROVISIONS IS USED WITH THE CONCRETE MIX DESIGN. PAYMENT FOR THE SHRINKAGE REDUCING ADMIXTURE WILL BE INCIDENTAL TO THE BRIDGE CURB CONCRETE ITEM.
2. IF THE CONTRACTOR CHOOSES NOT TO USE AN APPROVED SHRINKAGE REDUCING ADMIXTURE, THE CURBS SHALL BE CONSTRUCTED WITH CONSTRUCTION JOINTS SPACED AT A MAXIMUM OF 15'-0" CENTER TO CENTER AND 2'-0" MINIMUM FROM THE CENTER OF NEAREST BRIDGE RAILING POST.
3. ON MULTI-SPAN CONTINUOUS SUPERSTRUCTURES, REGARDLESS OF WHETHER APPROVED SHRINKAGE REDUCING ADMIXTURE IS USED, CURB JOINTS SHALL BE LOCATED OVER THE CENTERLINE OF PIERS AND 7'-0" EACH SIDE OF THE CENTERLINE OF EACH PIER.
4. WHEN CURB JOINTS ARE USED THE CURBS SHALL BE PLACED IN ALTERNATE SECTIONS WITH A MINIMUM OF 48 HOUR DELAY BETWEEN ADJACENT PLACEMENTS.
5. LONGITUDINAL REINFORCING SHALL BE CONTINUOUS THROUGH CURB CONSTRUCTION JOINTS. CURB STIRRUP BARS SHALL BE TURNED AS NECESSARY TO MAINTAIN COVER IN THE FLARED CURB ENDS.
6. THE JOINT SPACING AND DETAILS SHOWN SHALL APPLY TO SIDEWALKS WHEN SHOWN IN THE PLANS.



**SECTION D-D
LINK SLAB DETAIL**

SEE LINK SLAB NOTES

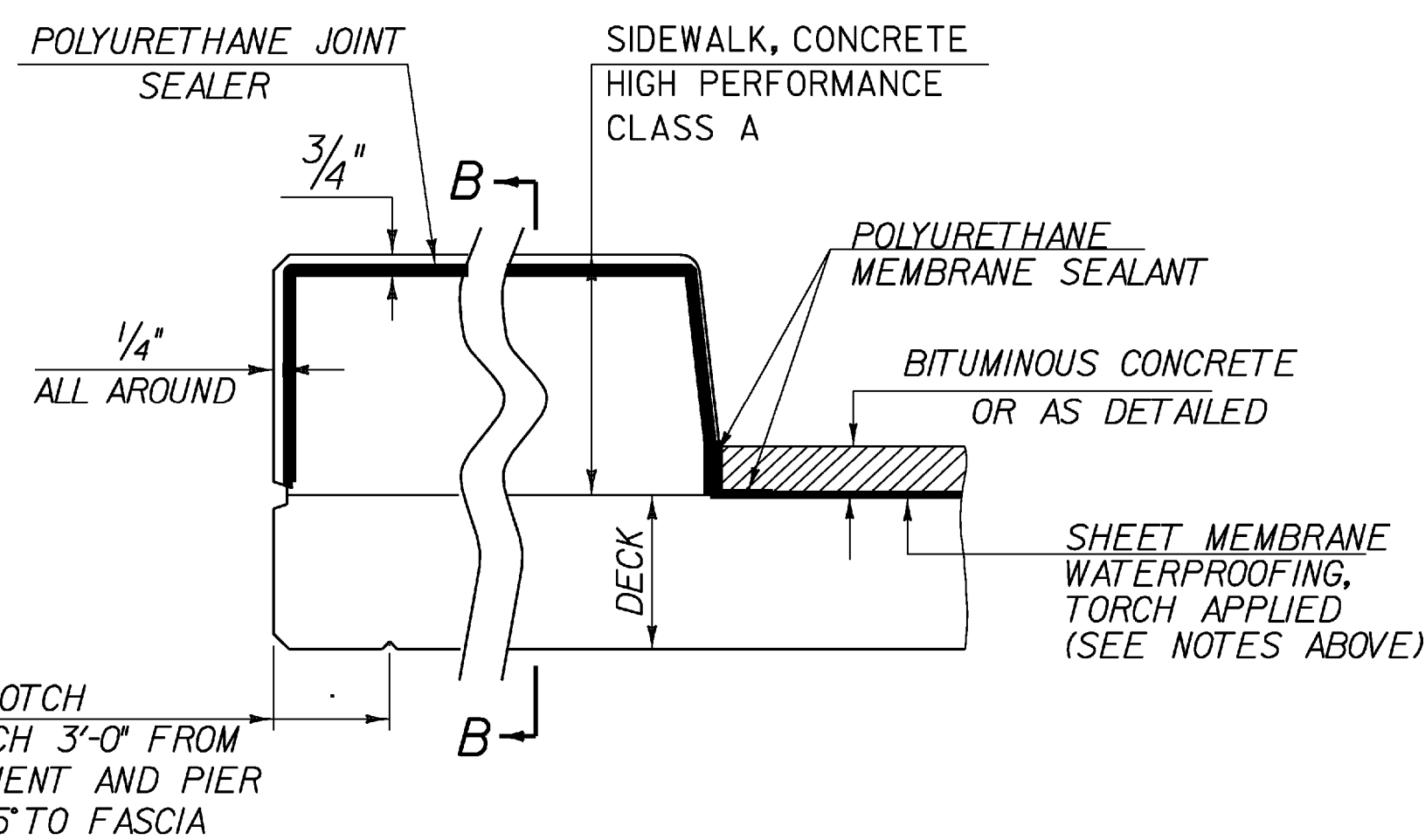
SCALE 1/2" = 1'-0"
1 0 1 2

LINK SLAB NOTES:

1. THE TOP OF THE BEAM IN THE REGION OF THE LINK SLAB SHALL BE SMOOTH AND FREE OF SHEAR CONNECTORS. NO WELDING OF FORMS OR FALSEWORK TO THE TOP FLANGE WILL BE PERMITTED IN THIS REGION.
2. THE COST OF THE LINK SLAB MEMBRANE SHALL BE INCIDENTAL TO PAY ITEM 501.33 "CONCRETE, HIGH PERFORMANCE CLASS A".

SHEET MEMBRANE NOTES:

1. PREPARE THE SURFACE OF THE FACE OF THE SIDEWALK TO BE SEALED WITH POLYURETHANE MEMBRANE SEALANT IN ACCORDANCE WITH SUBSECTION 519.04 SURFACE PREPARATION. (PAYMENT FOR POLYURETHANE MEMBRANE SEALANT SHOULD BE INCLUDED IN ITEM 519.20, "SHEET MEMBRANE WATERPROOFING, TORCH APPLIED".)
2. SHEET MEMBRANE WATERPROOFING, TORCH APPLIED: EXTEND SHEET MEMBRANE WATERPROOFING TO FACE OF SIDEWALK.



**TYPICAL SECTION THROUGH
CONCRETE SIDEWALK CONSTRUCTION JOINT**

VOID
SEE REVISED
SHEET

PROJECT NAME: SPRINGFIELD	PLOT DATE: 04-MAR-2009
PROJECT NUMBER: BHF 016-2(14)	DRAWN BY: C. MOONEY
FILE NAME: s06j004sup.dgn	CHECKED BY: D. PETERSON
PROJECT LEADER: R. WHITCOMB	SHEET 29 OF 72
DESIGNED BY: C. CARLSON	
CONCRETE DETAILS	