

GPS CONTROL POINTS

HVCTRL #93

HANDLY
 NORTH = 291658.25
 EAST = 1644850.71
 ELEV. = 427.46

TO REACH FROM THE INTERSECTION OF VT ROUTES 11 AND 106 IN SPRINGFIELD GO SOUTHEAST ALONG VT ROUTE 11 FOR 0.5 MI (0.8 KM) TO A CONCRETE SPILLWAY CARRYING THE BLACK RIVER AND THE MARK ON THE RIGHT. THE STATION IS LOCATED 17.5 M (57.4 FT) WEST SOUTHWEST OF AND 2 M (6.6 FT) LOWER THAN THE SOUTHWEST EDGE OF PAVEMENT OF VT ROUTE 11, 7.2 M (23.6 FT) SOUTHWEST OF POLE 5A, 0.9 M (3.0 FT) WEST SOUTHWEST OF THE NORTHWEST CORNER OF A SINGLE STORY BUILDING, AND 1.2 M (3.9 FT) EAST OF THE WEST EDGE OF THE CONCRETE SPILLWAY FOR THE BLACK RIVER.

HVCTRL #94

ONEILL
 NORTH = 292646.17
 EAST = 1643742.51
 ELEV. = 450.23

TO REACH FROM THE INTERSECTION OF VT ROUTES 11 AND 106 IN SPRINGFIELD GO SOUTHEAST ALONG VT ROUTE 11 FOR 0.25 MI (0.40 KM) TO THE MARK ON THE LEFT. OWNERSHIP - FRANCES W. ONEILL 108 VT RT RIVER STREET, SPRINGFIELD, VT. THE STATION IS LOCATED 10.0 M (32.8 FT) NORTH NORTHEAST OF AND 1.0 M (3.3 FT) HIGHER THAN THE NORTHEAST EDGE OF PAVEMENT OF VT ROUTE 11, 8.3 M (27.2 FT) EAST SOUTHEAST OF THE CENTERLINE OF A PAVED DRIVE, 5.5 METERS (18.0 FT) SOUTH OF THE SOUTHWEST CORNER OF A 1/2 STORY HOUSE (108), AND 6.2 M (20.3 FT) WEST SOUTHWEST OF THE SOUTHEAST CORNER OF HOUSE 108.

GPS CONTROL POINTS

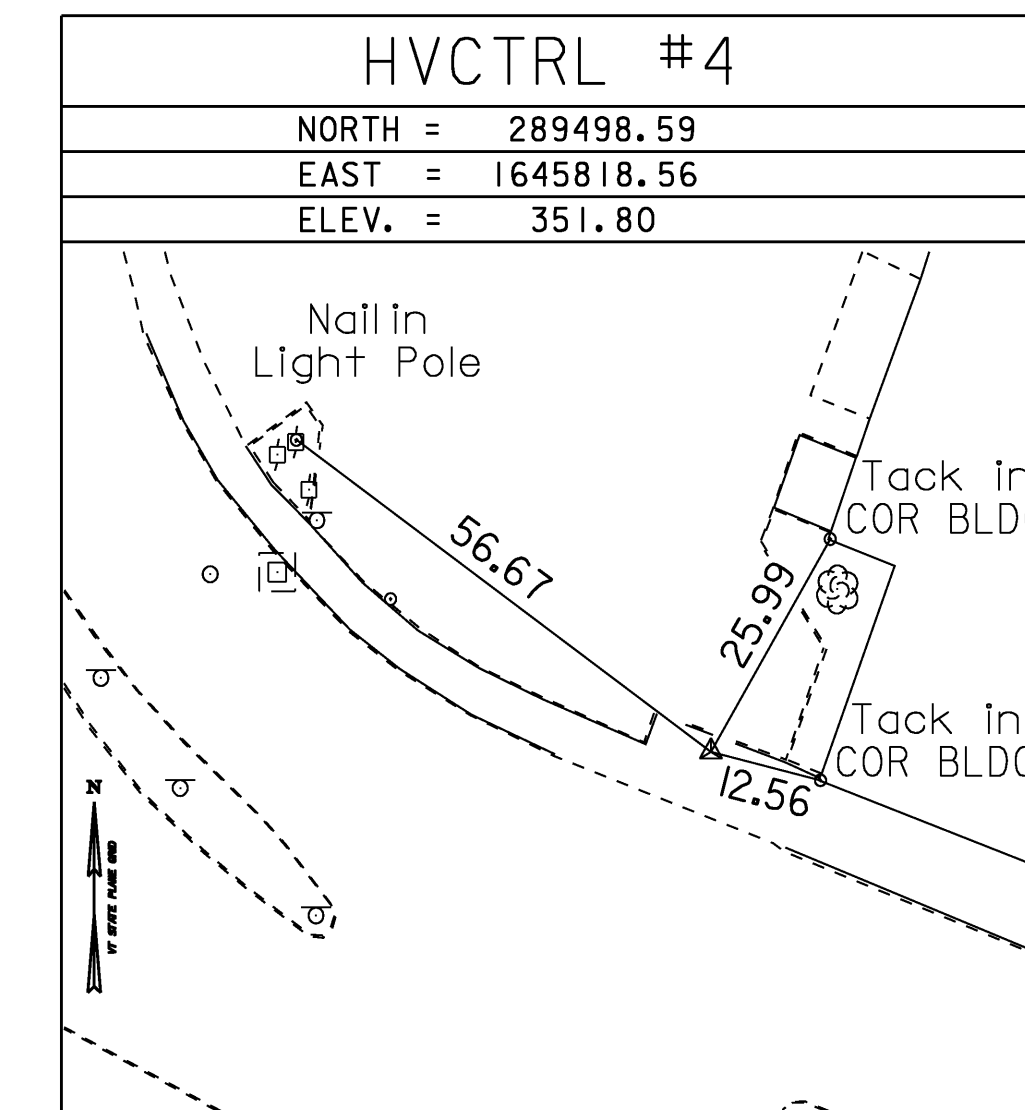
HVCTRL #3

A98006
 NORTH = 290068.23
 EAST = 1645556.12
 ELEV. = 367.12

DESCRIBED BY VERMONT GEODETIC SURVEY 1998 (CHR) GENERAL LOCATION, SPRINGFIELD, VT. TO REACH FROM THE INTERSECTION OF VT ROUTE 11, PARK STREET, AND VT ROUTE 143 GO SOUTH ALONG VT ROUTE 11 FOR 0.2 MI (0.3 KM) TO THE SPRINGFIELD POST OFFICE ON THE LEFT AND THE SITE OF THE MARK ON THE LEFT. THE MARK IS SET IN THE TOP OF A FLAT SHELF IN THE WEST END OF A 2.1 M (6.9 FT) X 0.3 M (1.0 FT) SLOPING CONCRETE WALL ON THE SOUTH SIDE OF THE CONCRETE STEPS LEADING TO THE FRONT (WEST) ENTRANCE TO THE POST OFFICE. IT IS 1.9 M (6.2 FT) EAST OF AND ABOUT 0.4 M (1.3 FT) HIGHER THAN THE EAST EDGE OF PAVEMENT OF VT ROUTE 11, 16.3 M (53.5 FT) SOUTHWEST OF THE NORTHWEST CORNER OF THE POST OFFICE, 13.6 M (44.6 FT) NORTHWEST OF THE SOUTHWEST CORNER OF THE POST OFFICE, AND 0.1 M (0.3 FT) EAST OF THE WEST END OF THE CONCRETE WALL. NOTE, MARK IS SUITABLE FOR GPS WHEN FOLIAGE IS GONE.

*Main Traverse Completed 05/24/07 by R.Gilman P.C. & P.Winters

TRAVERSE TIES



ALIGNMENT TIES

DATUM	
VERTICAL	NAVD 88
HORIZONTAL	NAD 83(96)
ADJUSTMENT	Compass

PROJECT NAME:	Springfield
PROJECT NUMBER:	BHF 016-2(14)
FILE NAME:	06J004\survey\06J004t1.dgn
PROJECT LEADER:	R. WHITCOMB
DESIGNED BY:	D. PETERSON
TIE SHEET	
PLOT DATE:	04-MAR-2009
DRAWN BY:	R. Bullock
CHECKED BY:	C. CARLSON
SHEET	9 OF 72