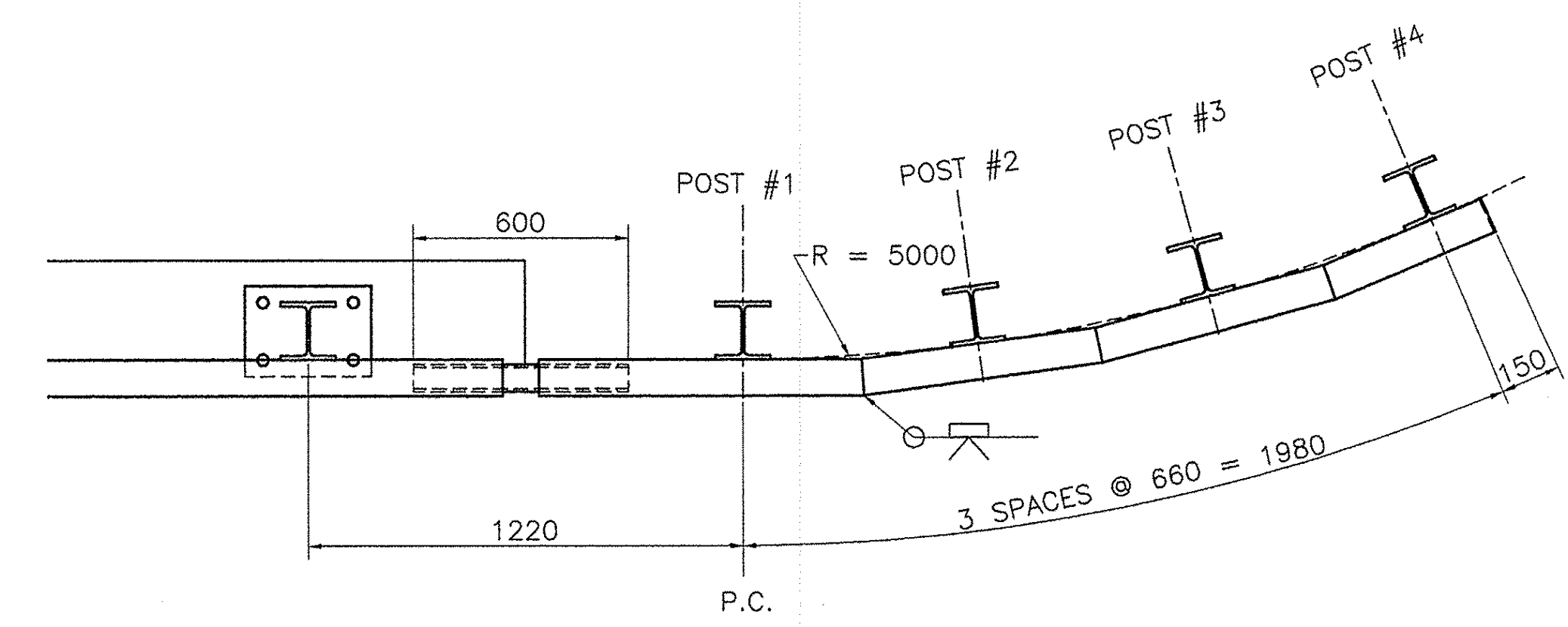
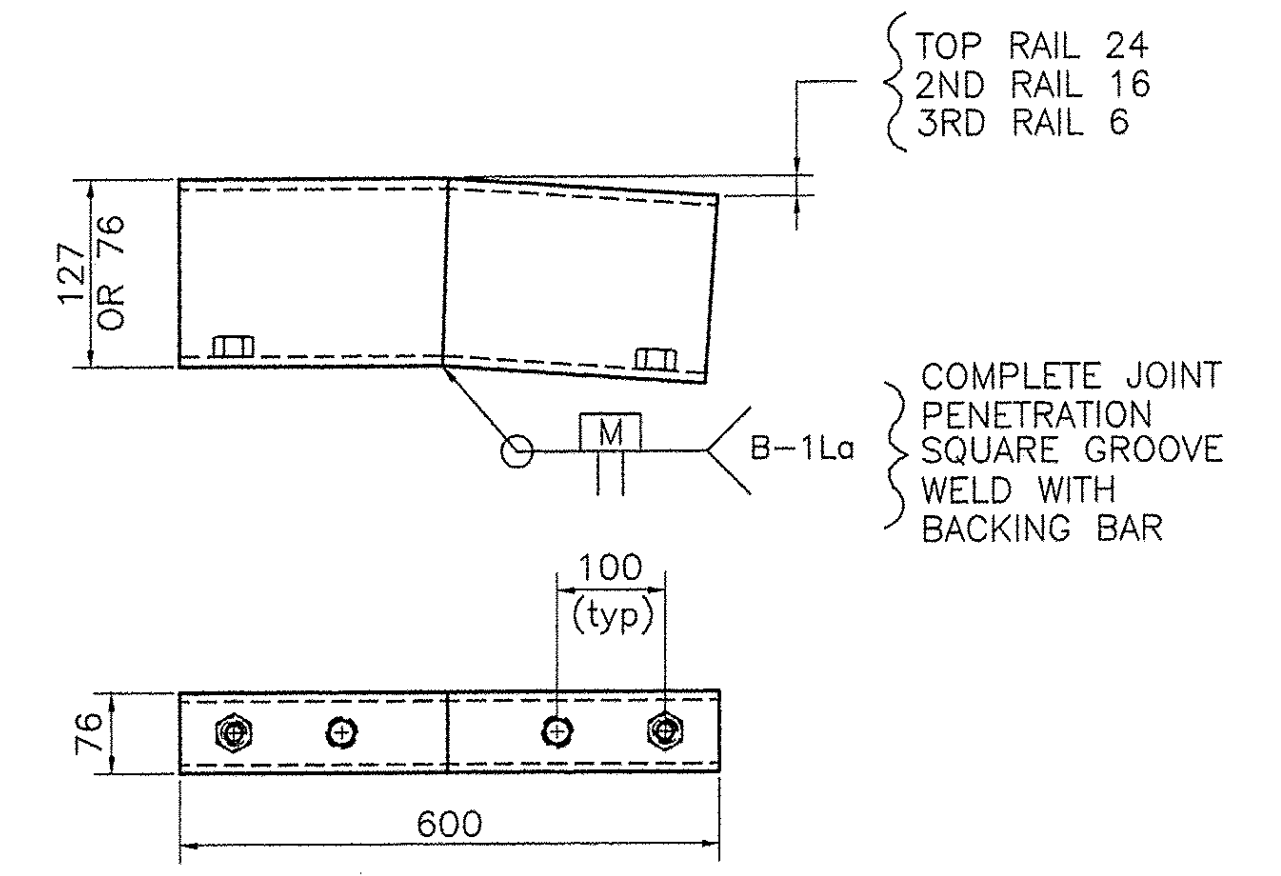


PLAN

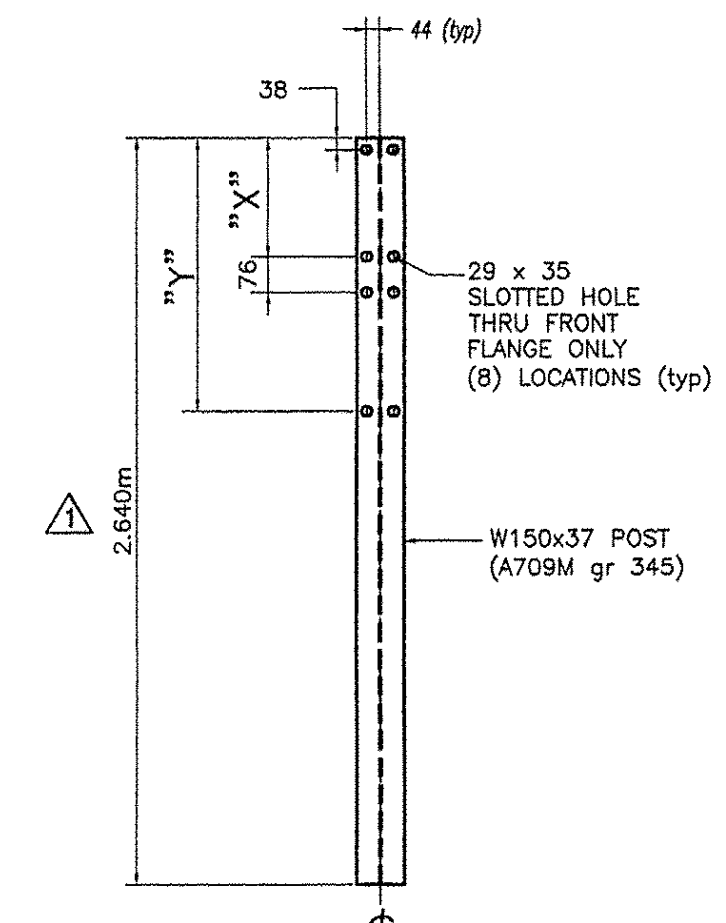


ELEVATION
4 LOCATIONS (TYP.)

BILL OF MATERIAL (4 APPROACHES)				
Mark #	Qty.	Description	Size/Shape	Material
	16	W150x37 POST		A709M Gr. 345
T1	4	SHOP CURVED TS 102 x 102 x 6 TOP RAIL		A500 Gr. B
T2	4	SHOP CURVED TS 152 x 102 x 8 MIDDLE RAIL		A500 Gr. B
T3	4	SHOP CURVED TS 102 x 102 x 6 BOTTOM RAIL		A500 Gr. B
	4	TS 76 x 76 x 8 ANGLED SPLICE TUBE		A500 Gr. B
	4	TS 127 x 76 x 10 ANGLED SPLICE TUBE		A500 Gr. B
	4	TS 76 x 76 x 8 SPLICE TUBE		A500 Gr. B
	96	M20 ROUND HEAD BOLT		M164M
	96	M20 HEX NUT		A563 DH
	96	M20 WASHER		F436M
	48	M16 SPLICE BOLT		A325M
	48	M16 PLAIN HARDENED WASHER		F436M
	24	M16 NUT WELDED TO SPLICE TUBE		A563M
	2	END CAP FOR 102 x 102 TUBE RAIL		A709M Gr. 250
	1	END CAP FOR 152 x 102 TUBE RAIL		A709M Gr. 250
	48	DN 20 SCH. 40 PIPE SPACER		A53 Gr. B

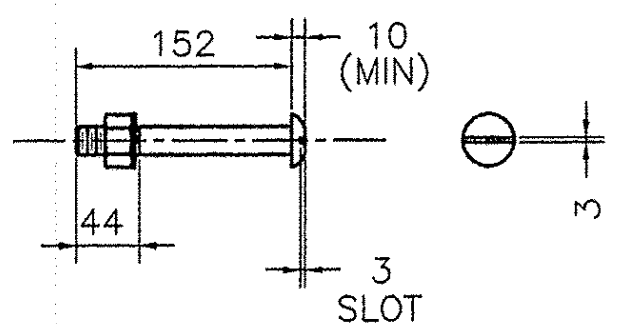


ANGLED SPLICE TUBE DETAIL

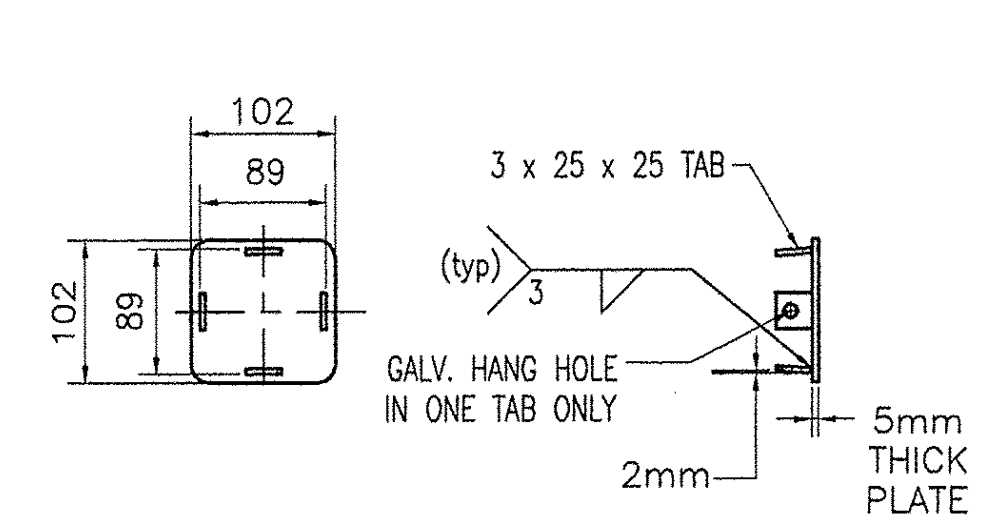


STEEL POST

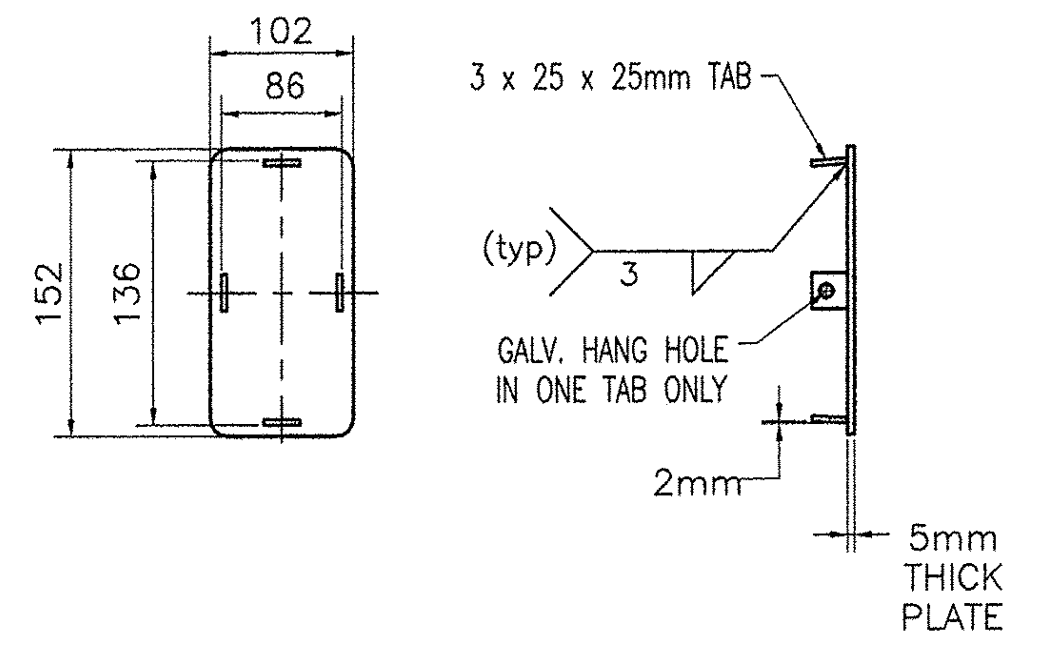
STEEL POST CHART		
No.	" X "	" Y "
#1	381	876
#2	362	838
#3	344	800
#4	325	763



M20 DIA M164 (TYPE I)
ROUND HEAD BOLT
(WITH WASHER AND PREVAILING TORQUE TYPE LOCK NUT)
ONLY FULL DIAMETER BODY BOLTS WILL BE ALLOWED



END CAP (102x102)



END CAP (152x102)

REVISIONS		
No.	Remarks	Date
0	Initial submittal	2/15/08
1	Post Height	3/18/08
2	Added Details	6/5/08

REVISIONS

DATE: 6/5/08

BY: [Signature]

REVISIONS ARE FOR THE SOLE PURPOSE OF ASSESSING GENERAL CONFORMANCE WITH DIMENSIONS, FABRICATION AND CONSTRUCTION DETAILS, DESIGN OF COMPONENTS, AND ERRORS OR OMISSIONS ON SHOP DRAWINGS.

RECEIVED
JUN 27 2008
G.P.I.



HIGHWAY SAFETY CORP.
GLASTONBURY, CT

ITEM 900.620 BRIDGE APPROACH RAILING - 3 RAIL
TOWN OF BENNINGTON
COUNTY OF BENNINGTON
PROJECT AC NH 019-1(53) BRIDGE B11
EAST ROAD OVER VT ROUTE 279

DRAWN: MHM
CHECKED: P. Radice
DATE: 12/30/07
SCALE: N.T.S.
HISC REFERENCE NO.: 1615

GENERAL CONTRACTOR: [Blank]
SUB CONTRACTOR: F.R. LAFAYETTE, INC.

SHEET NO.: 7 of 11