

**ONE - EXPANSION JOINT - 2EJ1**  
ABUTMENT #2

**SHOP NOTES:**

1. WORK THIS SHEET ALONG WITH STANDARD SHEET #1 AND CURB PLATE ASSEMBLY SHEETS.
2. COAT ALL BOLTS AND FERRULE INSERTS WITH NEVER SEIZE GREASE PRIOR TO ASSEMBLY.
3. WRENCH TIGHTEN BOLTS AFTER ASSEMBLY OF THE EXPANSION JOINT.
4. SEAL ALL ACCESSIBLE JOINTS PRIOR TO GALVANIZING.

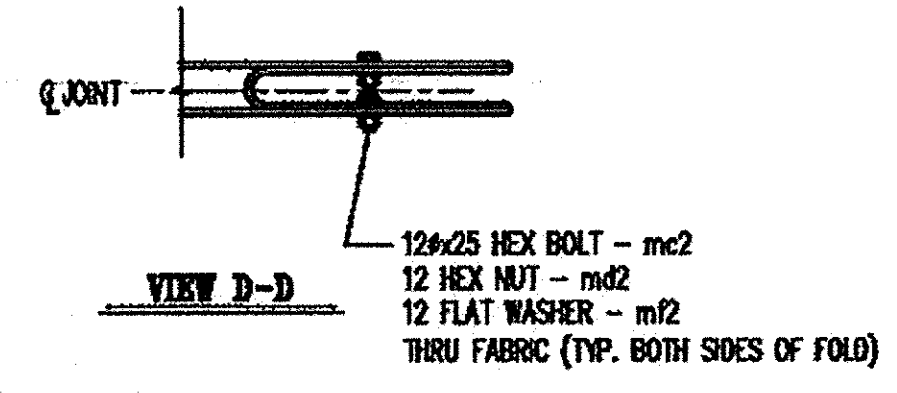
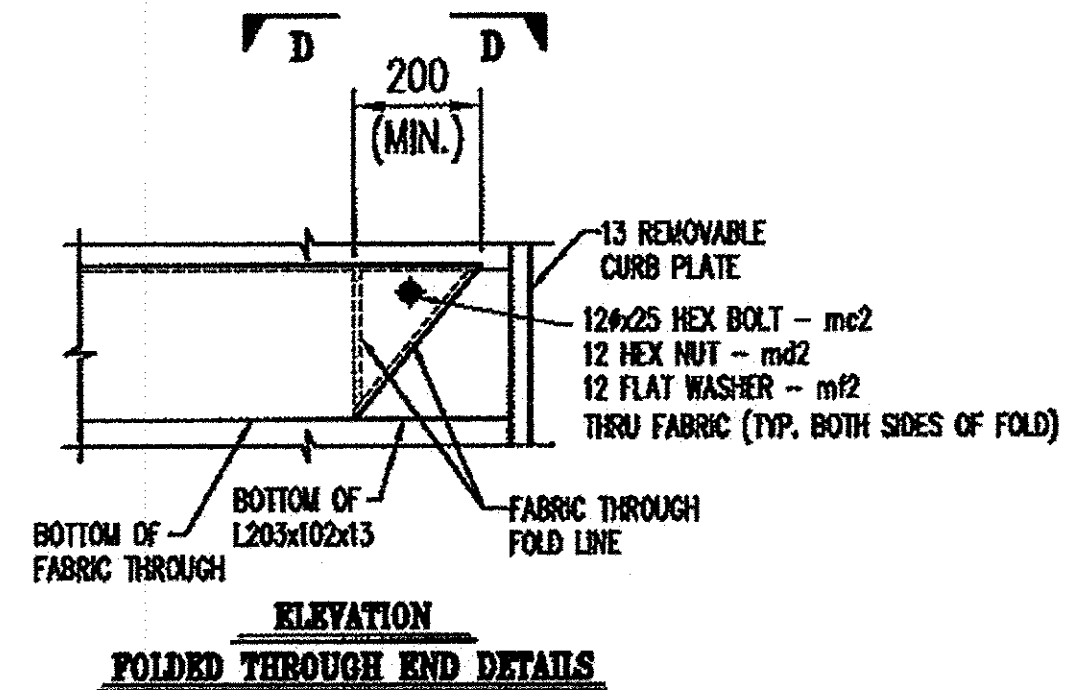
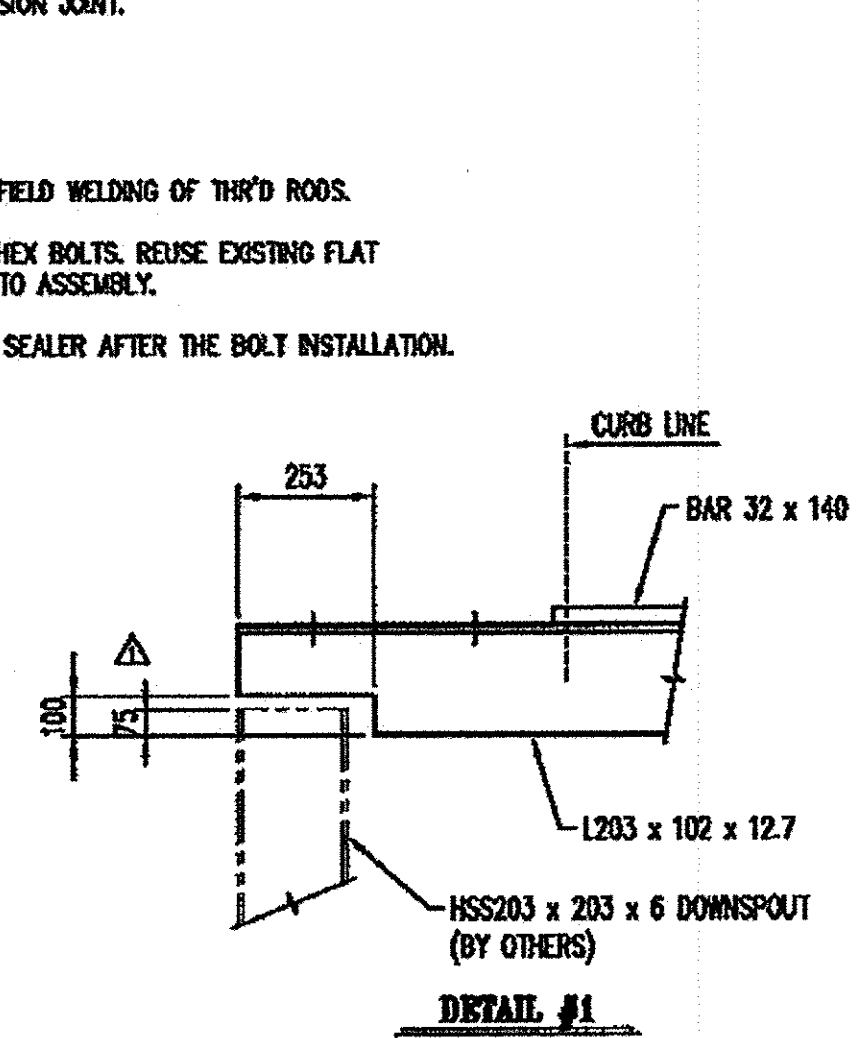
**CONTRACTOR NOTES:**

1. ADJUST JOINT OPENING TO PROPER DIMENSION PRIOR TO FIELD WELDING OF THRD ROOS.
2. REMOVE SHIPPING ANGLES AND REPLACE WITH 19# x 57 HEX BOLTS. REUSE EXISTING FLAT WASHERS. COAT BOLT TREADS WITH NEVER SEIZE PRIOR TO ASSEMBLY.
3. FILL ALL COUNTERBORED HOLES WITH HOT POURED JOINT SEALER AFTER THE BOLT INSTALLATION. WORK AND MATERIALS ARE TO BE DONE BY OTHERS.

JOINT OPENING		
TEMP	"A"	"B"
-20° C.	72	148
-10° C.	63	139
0° C.	55	131
10° C.	47	123
20° C.	38	114
30° C.	30	106
40° C.	21	97

**BILL OF MATERIALS**

#	MARK NO.	QTY	DESCRIPTION	MATERIAL	REMARKS
1			ONE - EXPANSION JOINT - 2EJ1		HOG
2	oa1	3	L102 x 102 x 12.7 x 327	A36	
3					
4	ma1	44	19# x 250 CONCRETE HEADED STUD	A108	
5	mb1	30	19# x 250 CONCRETE HEADED STUD	A108	BENT
6	mc1	3	2 x 38 (MIN) BUTYL RUBBER TAPE (15.2M ROLL)	AASHTO M-198 #75385A15	
7	md1	60	19# x 57 HEX BOLT	A325	M/G
8	me1	6	19# x 95 HEX BOLT	A325	M/G
9	mf1	6	19 FLAT WASHER	F438	M/G
10	mg1	60	19 HEX COUPLER NUT	A563	M/G
11	mh1	32	25# x 200 THREADED ROD	A36	HOG
12	mi1	32	25# x 150 THREADED ROD	A36	HOG
13	mj1	64	25 HEAVY HEX NUT	A563	HOG
14					
15	pa1	8	FL 12.7 x 152 x 250	M270M(250)	
16	pb1	8	FL 12.7 x 200 x 250	M270M(250)	
17	pc1	4	FL 12.7 x 200 x 225	M270M(250)	
18	pd1	64	FL 10 x 76 x 76	M270M(250)	HOG
19					
20	oa2	ONE	L203 x 102 x 12.7 x 9970	M270M(250)	
21	ob2	ONE	L203 x 102 x 12.7 x 9970	M270M(250)	
22					
23	ba2	ONE	BAR 32 x 140 x 6864	M270M(250)	
24	bb2	ONE	BAR 32 x 140 x 6864	M270M(250)	
25					
26	ma2	ONE	3 PLY FABRIC TROUGH 4 x 650 x 10180	PER SPEC	
27	mb2	ONE	3 PLY FABRIC DRIP 4 x 6 x 180	PER SPEC	
28	mc2	2	12 x 25 HEX BOLT	A568M CLASS 4.8 GALV	
29	md2	2	12 HEX NUT	A563	M/G
30	me2	4	12 FLAT WASHER	F438	M/G
31	mf2	ONE	ANTI SEIZE GREASE		



IF CONTRACTOR HAS REPAIRED UNLESS NOTED OTHERWISE

AD EXCEPTION AREA

REMOVE AS NOTED

RESUBMIT DRAWING REQUIRED

ISSUE AS NOTED

RESUBMISSION REQUIRED

SELECTED

DATE: 4/28/08

SIGNATURE: TSK

REVIEW BY: STATED FOR THE SOLE PURPOSE OF ASSURANCE GENERAL CONFORMITY WITH DESIGN. CONTRACTOR IS RESPONSIBLE FOR DIMENSIONS, FABRICATION AND CONSTRUCTION METHODS, COORDINATION OF SUB-TASKS, DETAIL DESIGN OF COMPONENTS AND ERRORS OR OMISSIONS ON SHOP DRAWINGS.

**Niagara Bridge and Rail**  
4817 Harry Avenue, Niagara Falls, N.Y. 14304  
Phone: (716) 283-4716 Fax: (716) 283-5137

Project Information:  
STATE: VERMONT  
COUNTY:  
CITY / TOWNSHIP: BENNINGTON  
LOCATION: EAST RD. OVER VT ROUTE 279  
PROJECT NO.: AC NH D18-(53)  
OWNER: VT-AOT  
CONTRACTOR:

Drawn By: JRB Date: 3/17/08 Checked By: TFW Date: 3/24/08  
Scale: NONE  
Sheet No.: 2 of 180  
Drawing No.: 10063-01 Rev No.: -

RECEIVED  
MAY 05 2008  
C.P.I.