

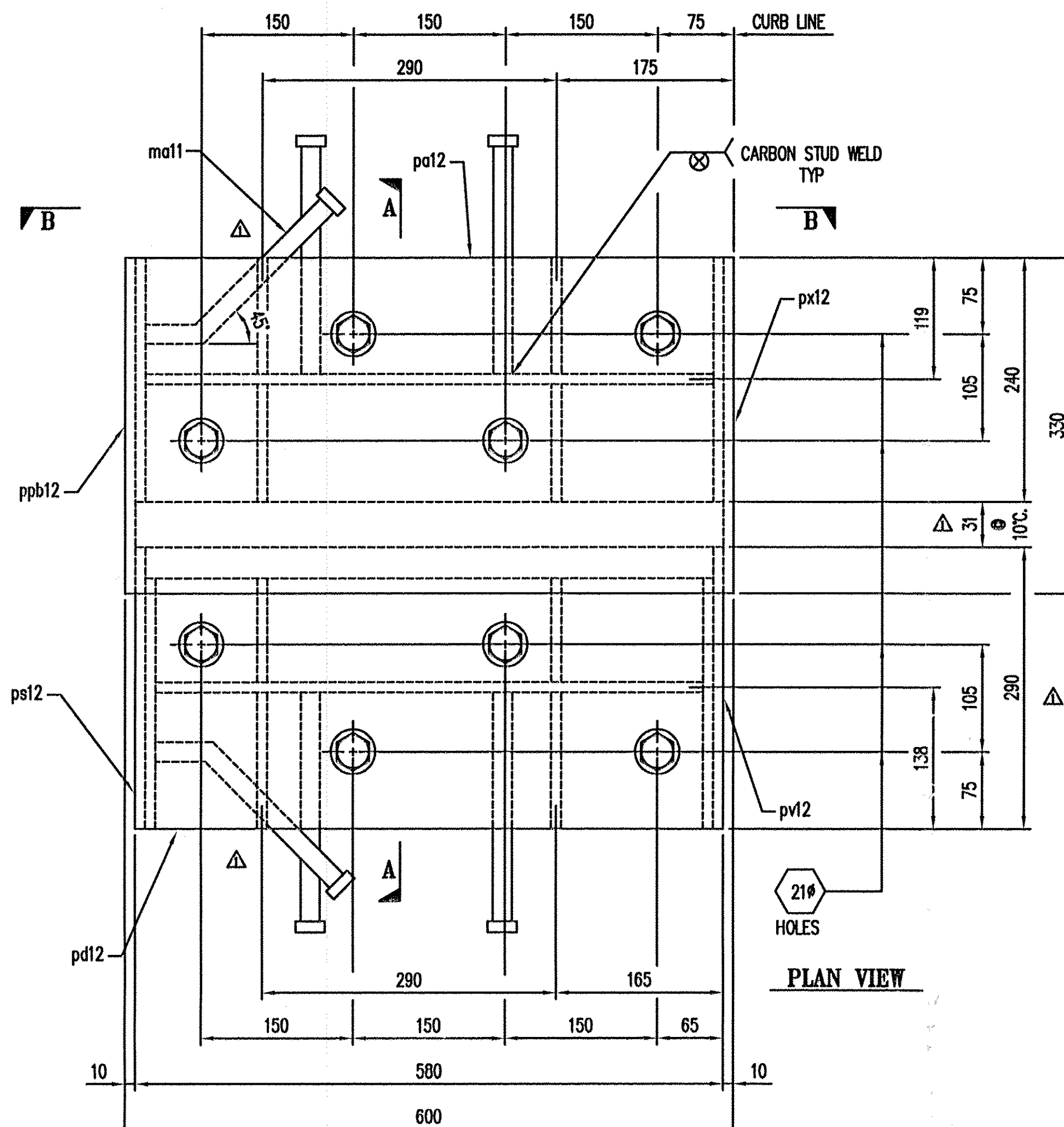


HEX NUT WELD DETAIL

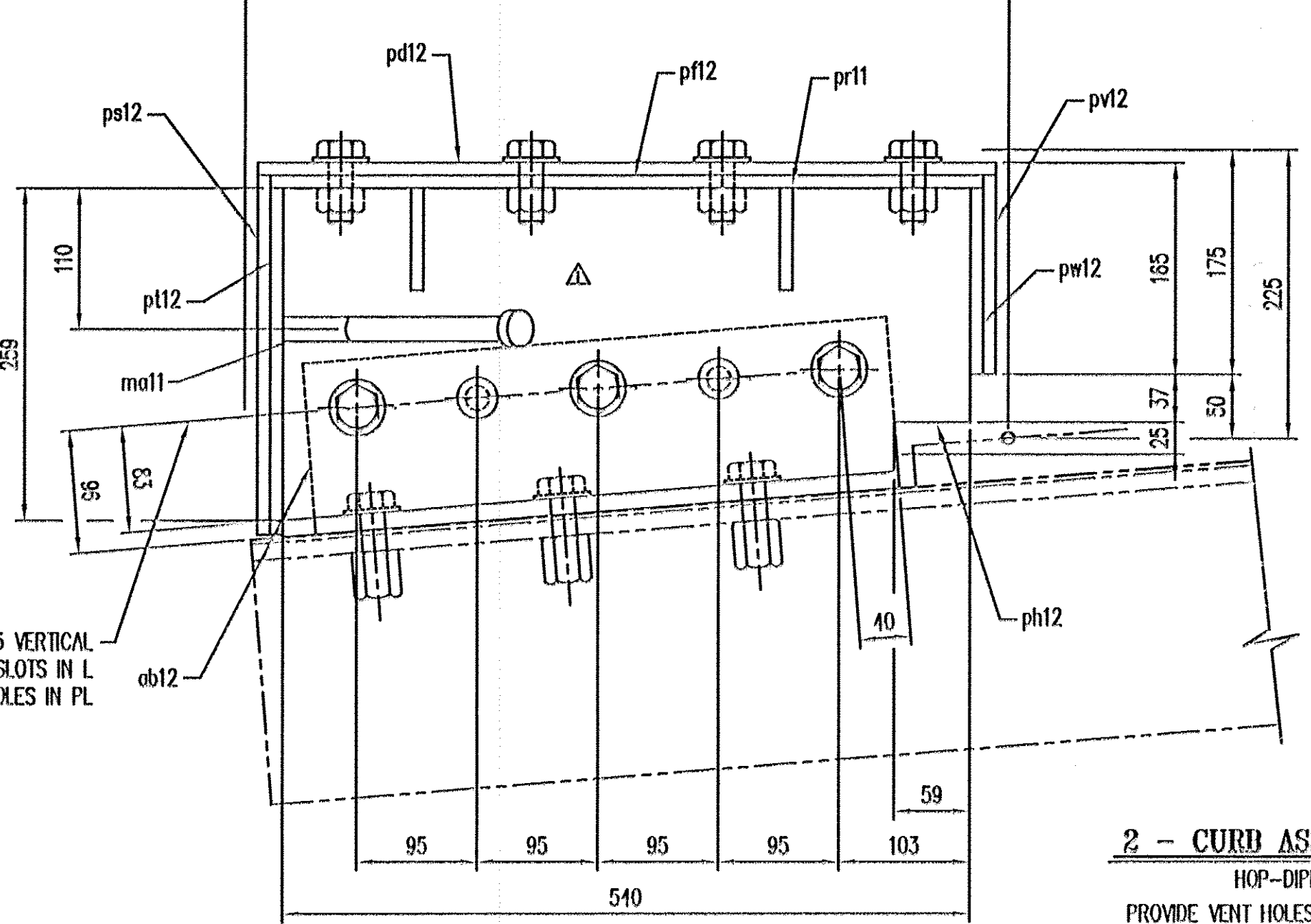
TVGA CONSULTANTS

NO EXCEPTIONS TAKEN
 FURNISH AS CORRECTED
 REVISE AND RESUBMIT
 ENGINEER has reviewed Shop Drawings and Samples and other data which Contractor is required to submit, only for conformance with the information given in the Contract documents and compatibility with the design concept of the completed Project as a functioning whole as indicated in the Contract Documents. Such reviews do not extend to means, methods, techniques, sequences or procedures of construction or to safety procedures and programs incident thereto. Such reviews do not extend to any LEED certification or accreditation. Contractor is responsible for dimensions to be confirmed and corrected at the job site, for information that pertains solely to the fabrication process or to techniques of construction, and for coordination of the work of all trades.

BY: *BDC/10/15/08*
 DATE:

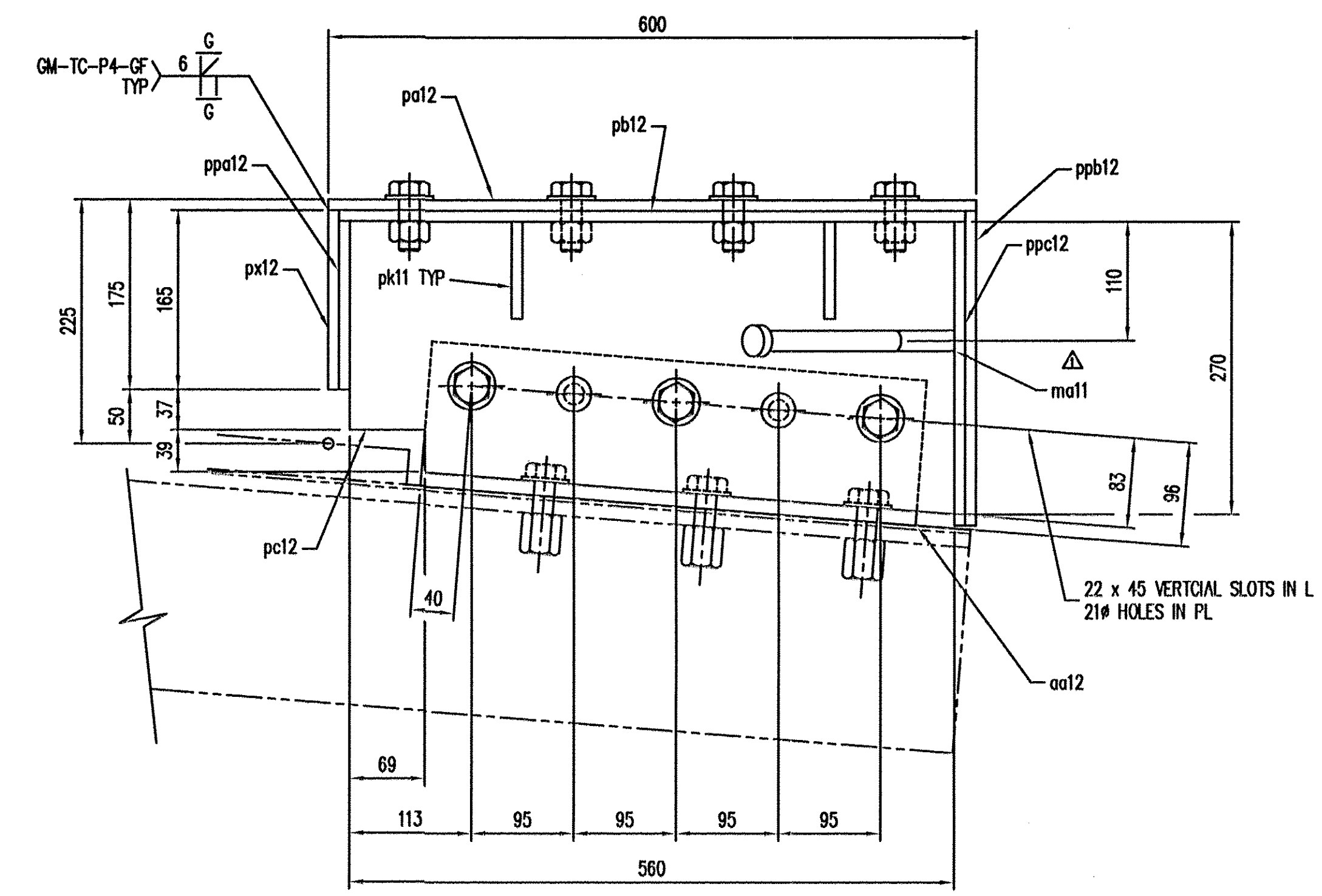


PLAN VIEW

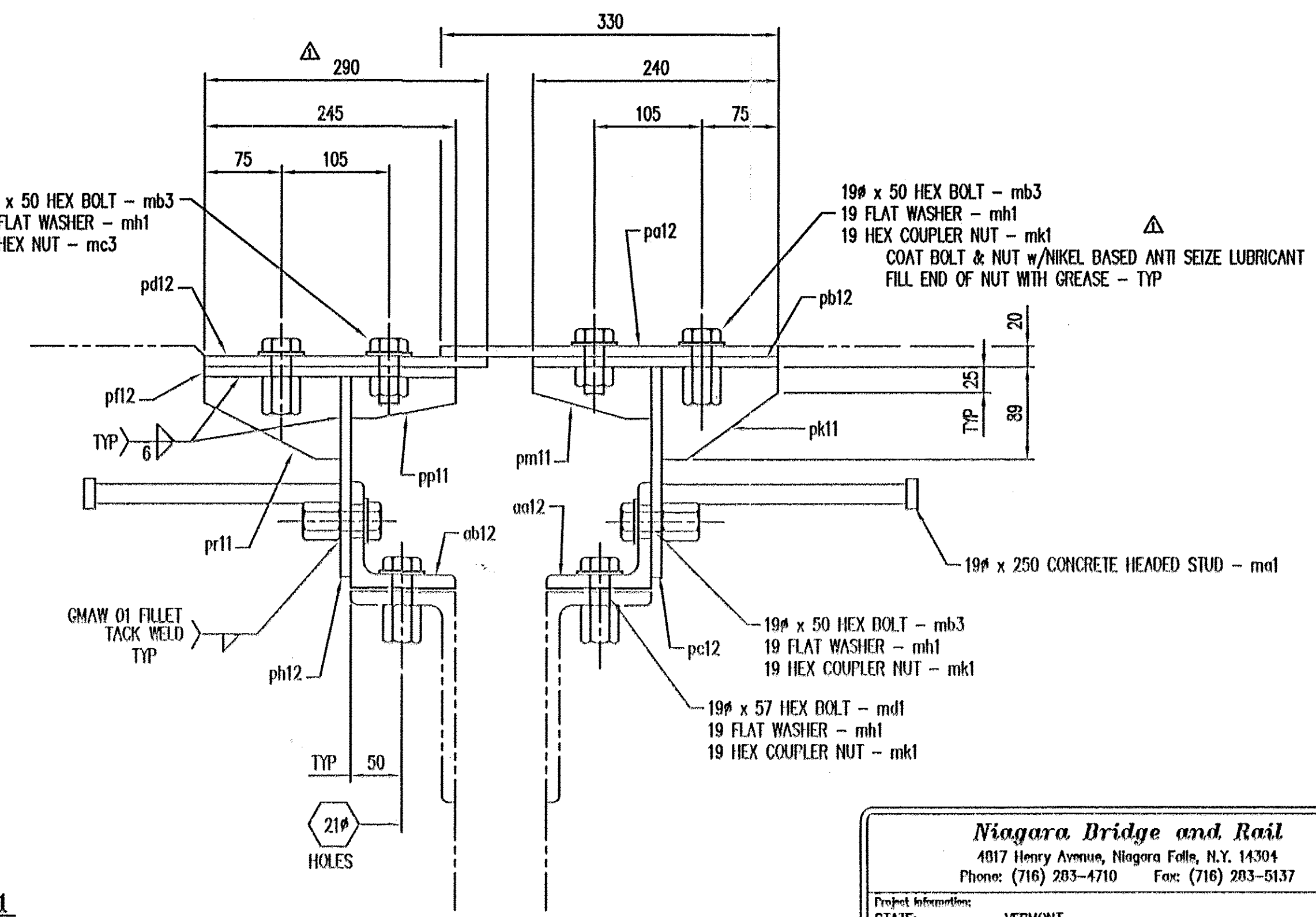


ELEVATION VIEW

REFER TO SHEET #9 & 10 FOR BASE ANGLE HOLES
 MATCH DRILL TO EXPANSION JOINT SUPPORT HOLES



VIEW: B-B



SECTION: A-A

2 - CURB ASSEMBLIES - 12CA1
 HOP-DIPPED GALVANIZED
 PROVIDE VENT HOLES FOR GALVANIZING PROCESS

This joint shall be shipped partially assembled and glued together on site

BILL OF MATERIALS				
#	MARK No.	QTY	DESCRIPTION	REMARKS
1			2 - CURB ASSEMBLIES - 12CA1	HIG
2				
3	ma1	8	19# x 250 CONCRETE HEADED STUD	A100
4	md1	12	19# x 57 HEX BOLT	A325 M/G
5	mh1	40	19 FLAT WASHER	F430 M/G
6	mk1	32	19 HEX COUPLER NUT	A563 M/G
7	mb3	20	19 x 50 HEX BOLT	A325 M/G
8	mc3	8	19 HEX NUT	A563 M/G
9	ma11	4	19# x 250 CONCRETE HEADED STUD	A100 BENT
10	pa12	2	PL 10 x 330 x 600	M270M(250)
11	pb12	2	PL 10 x 240 x 590	
12	pc12	2	PL 10 x 270 x 590	
13	pd12	2	PL 10 x 290 x 590	
14	pe12	2	PL 10 x 245 x 590	
15	ph12	2	PL 10 x 259 x 540	
16	pk11	4	PL 10 x 89 x 114	
17	pm11	4	PL 10 x 50 x 116	
18	pn11	4	PL 10 x 40 x 102	
19	po11	4	PL 10 x 79 x 133	
20	pa12	2	PL 10 x 200 x 290	
21	pb12	2	PL 10 x 245 x 270	
22	pc12	2	PL 10 x 155 x 290	
23	pd12	2	PL 10 x 145 x 245	
24	pe12	2	PL 10 x 165 x 330	
25	ppa12	2	PL 10 x 155 x 240	
26	ppb12	2	PL 10 x 280 x 330	
27	ppc12	2	PL 10 x 240 x 290	M270M(250)
28				
29	aa12	2	L102 x 102 x 9.5 x 470	M270M(250)
30	ab12	2	L102 x 102 x 9.5 x 470	M270M(250)
31				
32				
33				
34				

Niagara Bridge and Rail
 4817 Henry Avenue, Niagara Falls, N.Y. 14304
 Phone: (716) 203-4710 Fax: (716) 203-5137

Project Information:
 STATE: VERMONT
 COUNTY: BENNINGTON
 CITY / TOWNSHIP: VT ROUTE 279 OVER FURNACE BROOK
 LOCATION: AC NH 019-1(53)
 PROJECT NO.: VT-AOT
 OWNER:
 CONTRACTOR:

Drawn By: JAB Date: 5/01/08 Checked By: IFW Date: 5/06/08
 Description: 12 of 12 Scale: NONE
 Drawing No.: 10063-01 Rev No.: 1

RECEIVED
 OCT 22 2008
 G.P.I.

REV	DESCRIPTION	DATE	BY	APPROVED
1	ATTEMPT CHANGES	7/16/08	JAB	IFW