



HEX NUT WELD DETAIL

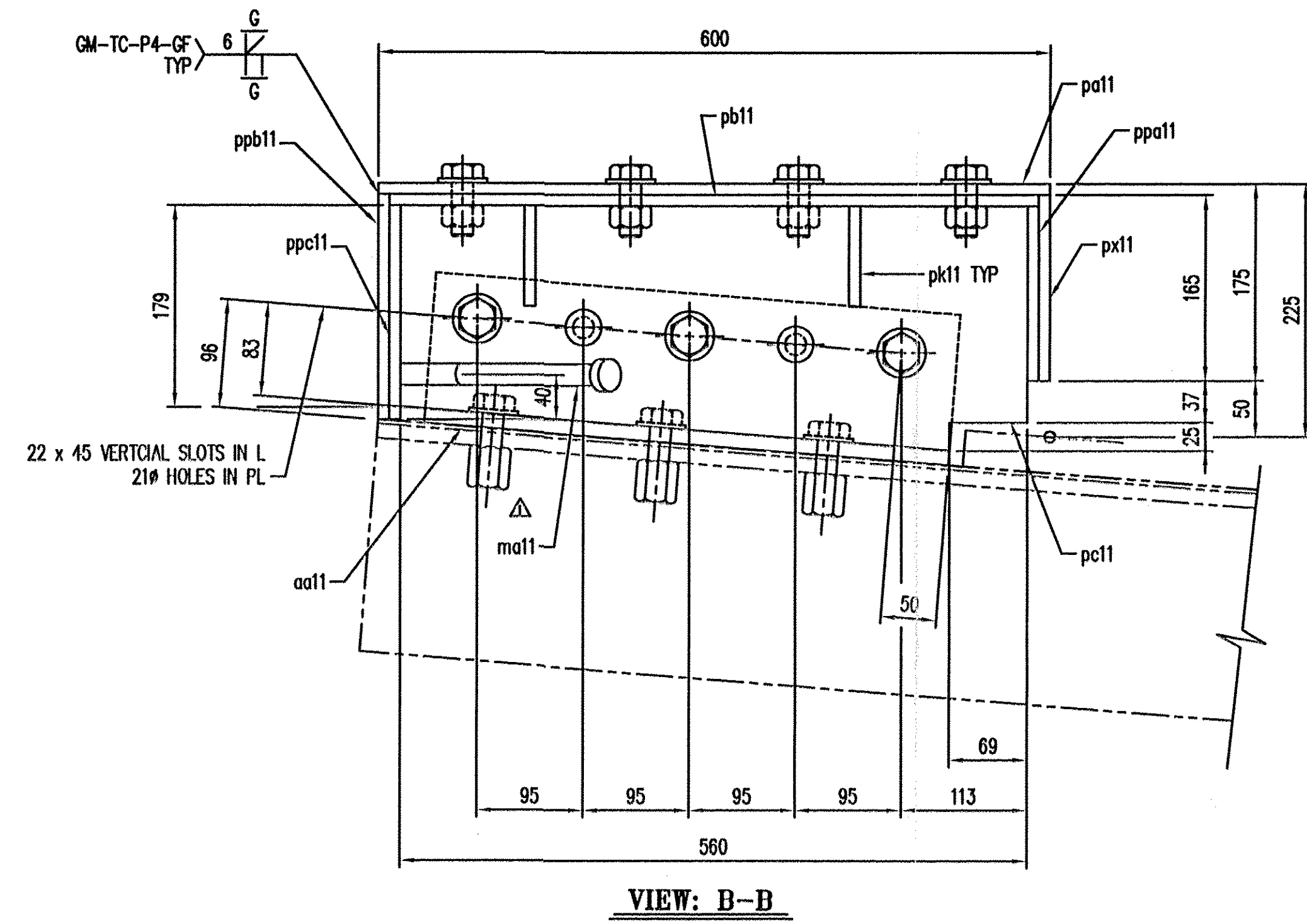
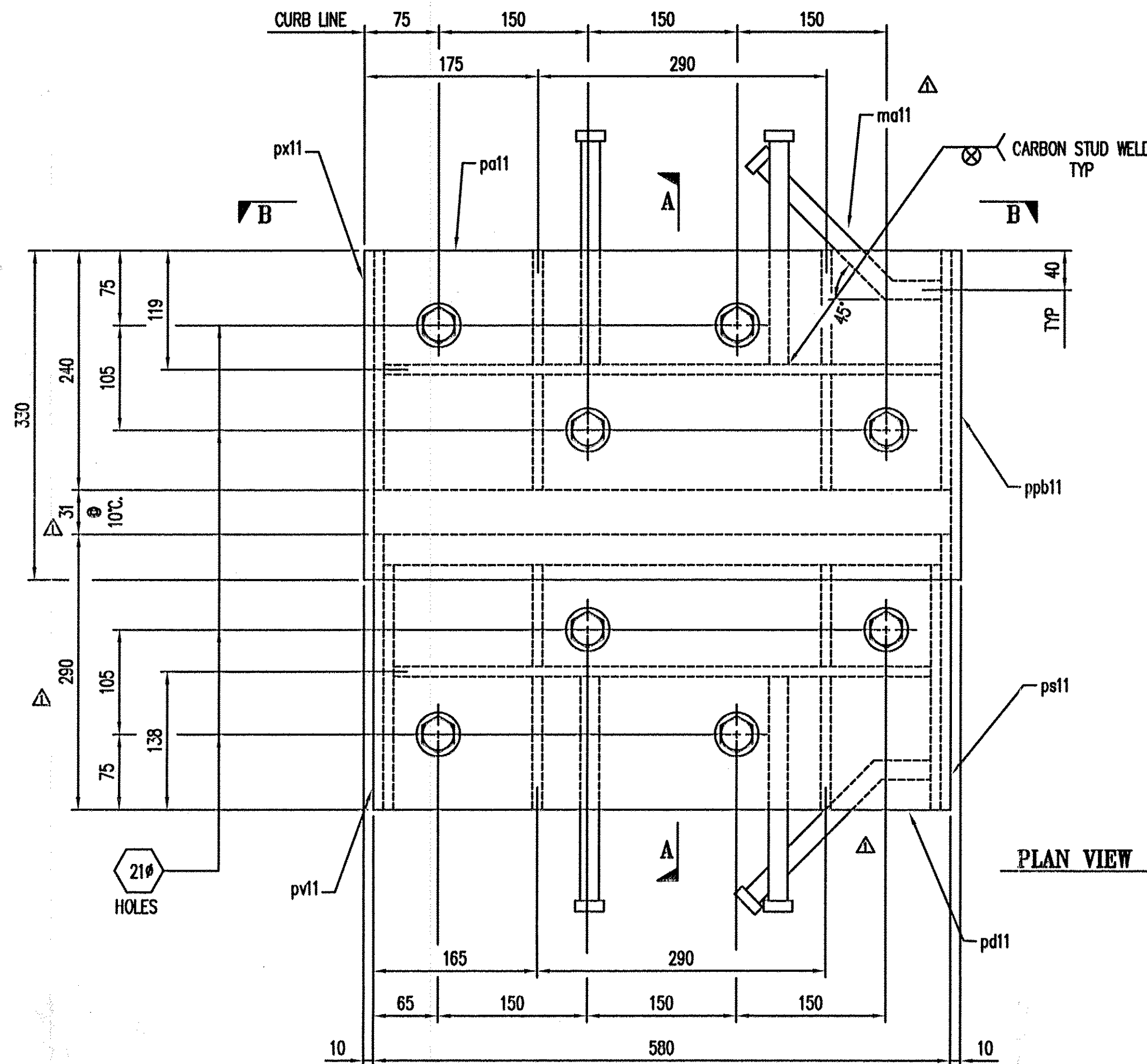
TVGA CONSULTANTS

- NO EXCEPTIONS TAKEN
- REJECTED
- FURNISH AS CORRECTED

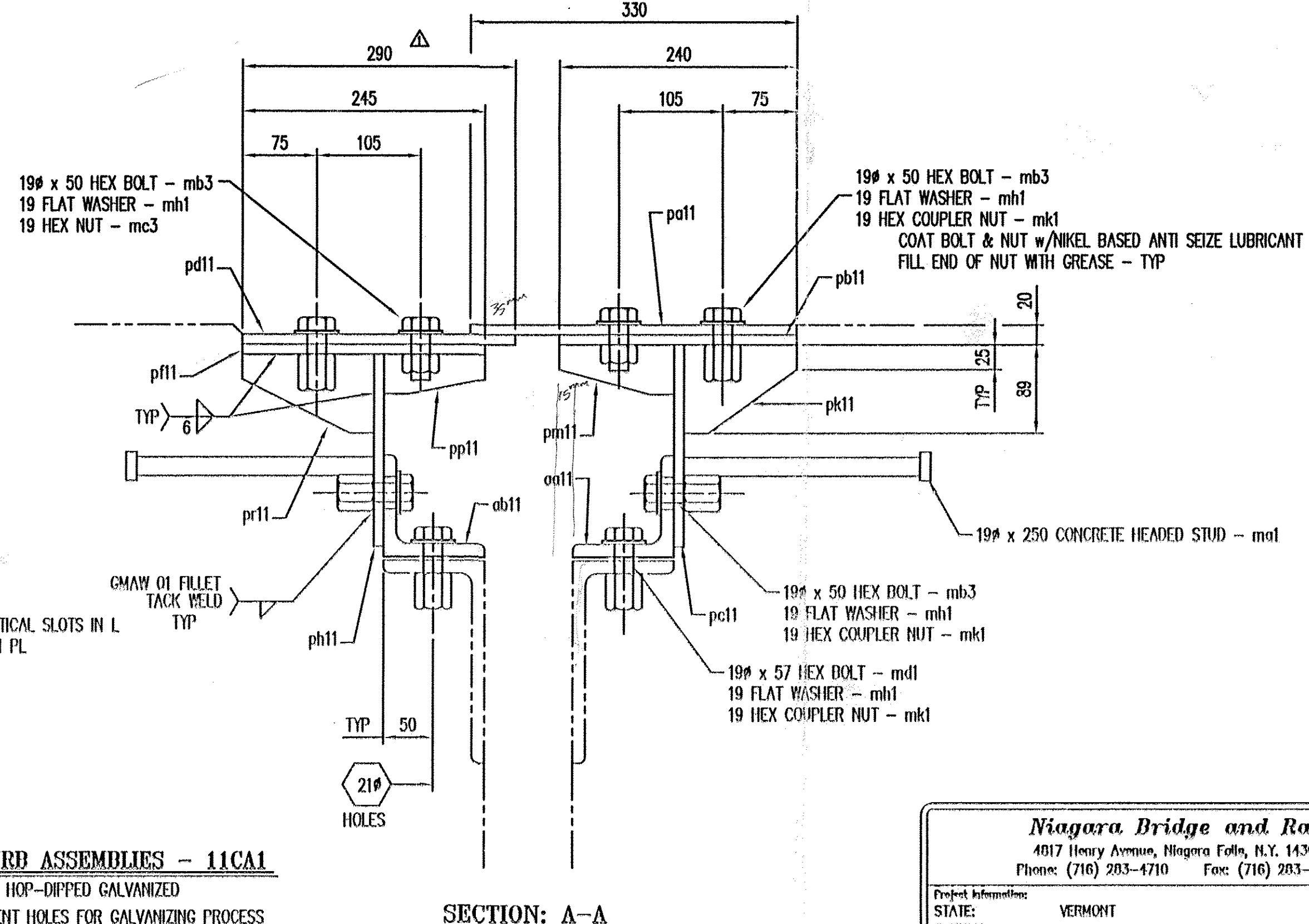
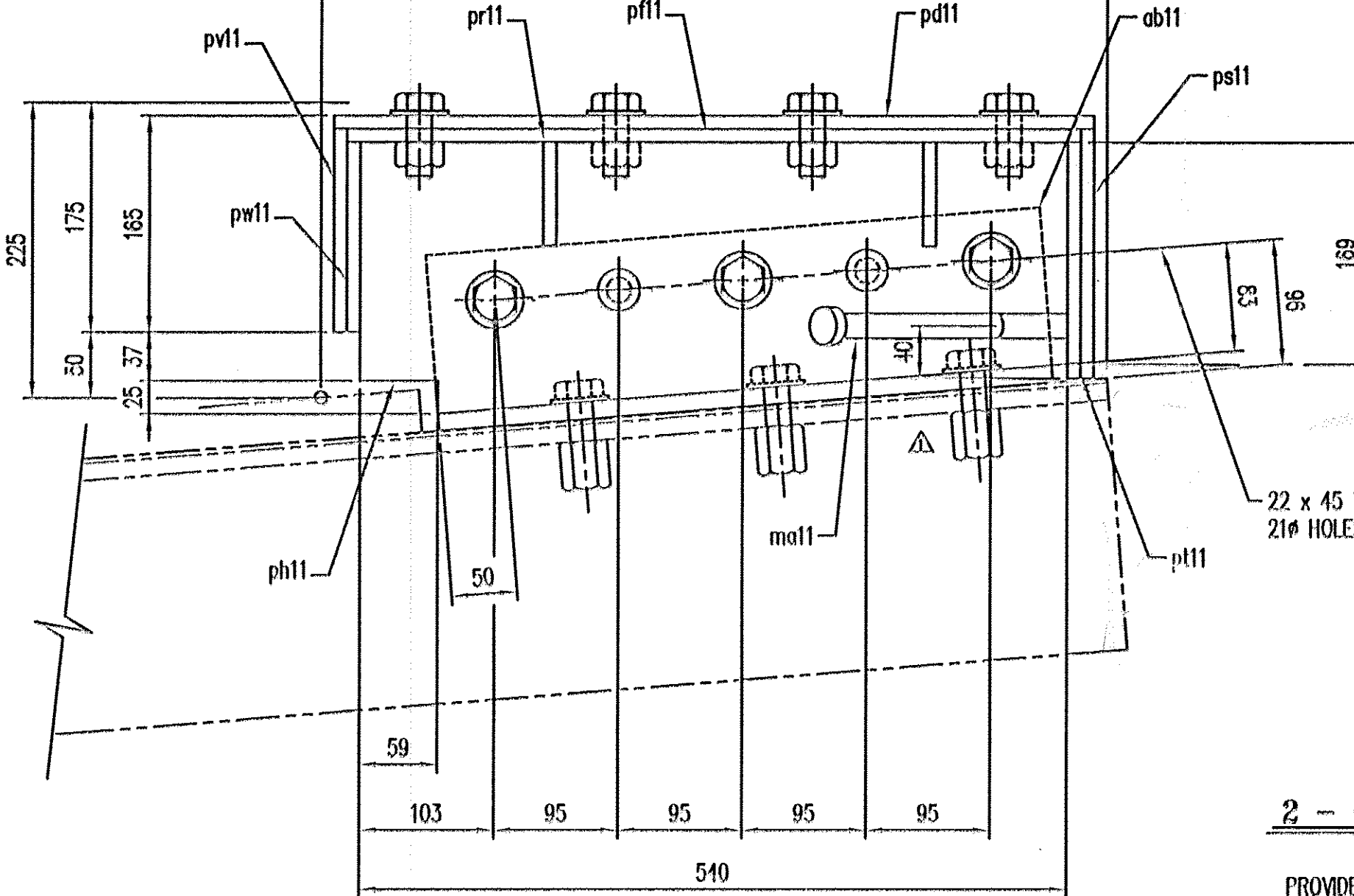
REVISE AND RESUBMIT
 ENGINEER has reviewed Shop Drawings and Samples and other data which Contractor is required to submit, only for conformance with the information given in the Contract Documents and compatibility with the design concept of the completed Project as a functioning whole as indicated in the Contract Documents. Such reviews do not extend to means, methods, techniques, sequences or procedures of construction or to safety precautions and programs incident thereto. Such reviews do not extend to any LEED certification or accreditation. Contractor is responsible for dimensions to be completed and corrected at the job site for information that pertains solely to the fabrication processes or to techniques of construction, and for coordination of the work of all trades.

BY: *BPC*
 DATE: *10/15/08*

Dino Gervasio
 Est. 106
 (716) 462-4000
 (Cell) (716) - 930-7405



BILL OF MATERIALS					
#	MARK No.	QTY	DESCRIPTION	MATERIAL	REMARKS
1			2 - CURB ASSEMBLIES - 11CA1		HDG
2					
3	ma1	8	19# x 250 CONCRETE HEADED STUD	A100	
4	md1	12	19# x 57 HEX BOLT	A325	M/G
5	mh1	40	19 FLAT WASHER	F436	M/G
6	mk1	32	19 HEX COUPLER NUT	A563	M/G
7	mb3	20	19 x 50 HEX BOLT	A325	M/G
8	mc3	8	19 HEX NUT	A563	M/G
9	ma11	4	19# x 175 CONCRETE HEADED STUD	A100	BENT
10	pa11	2	PL 10 x 330 x 600	M270M(250)	
11	pb11	2	PL 10 x 240 x 500		
12	pc11	2	PL 10 x 217 x 500		
13	pd11	2	PL 10 x 290 x 500		
14	pe11	2	PL 10 x 245 x 500		
15	pf11	2	PL 10 x 207 x 540		
16	pk11	4	PL 10 x 89 x 114		
17	pm11	4	PL 10 x 50 x 116		
18	pn11	4	PL 10 x 40 x 102		
19	po11	4	PL 10 x 79 x 133		
20	ps11	2	PL 10 x 190 x 290		
21	pt11	2	PL 10 x 100 x 245		
22	pv11	2	PL 10 x 155 x 290		
23	pw11	2	PL 10 x 145 x 245		
24	px11	2	PL 10 x 165 x 330		
25	py11	2	PL 10 x 155 x 240		
26	pz11	2	PL 10 x 200 x 330		
27	qa11	2	PL 10 x 190 x 240	M270M(250)	
28					
29	aa11	2	L102 x 102 x 9.5 x 470	M270M(250)	
30	ab11	2	L102 x 102 x 9.5 x 470	M270M(250)	
31					
32					
33					
34					



2 - CURB ASSEMBLIES - 11CA1
 HOP-DIPPED GALVANIZED
 PROVIDE VENT HOLES FOR GALVANIZING PROCESS

REFER TO SHEET #9 & 10 FOR BASE ANGLE HOLES
 MATCH DRILL TO EXPANSION JOINT SUPPORT HOLES

*This joint shall be shipped partially assembled
 and spliced together on site*

No.	Description	Date	By	Approved
1	APPROVAL CHANGES	7/10/08	JR	TFW
REVISIONS				

Niagara Bridge and Rail
 4017 Henry Avenue, Niagara Falls, N.Y. 14304
 Phone: (716) 283-4710 Fax: (716) 283-5137

Project Information:
 STATE: VERMONT
 COUNTY:
 CITY / TOWNSHIP: BENNINGTON
 LOCATION: VT ROUTE 279 OVER FURNACE BROOK
 PROJECT NO.: AC NH 019-1(53)
 OWNER: VT-AOT
 CONTRACTOR:

Drawn By: *JRB* Date: *5/01/08* Checked By: *TFW* Date: *5/06/08*

Description: VERMONT - EXPANSION JOINT DETAIL
 ARBUMENT #1 & 2 CURB PLATE DETAILS

Sheet No: 11 of 12
 Drawing No: 10003-01
 Scale: NONE
 Rev No: 1

RECEIVED
 OCT 22 2008
 G.P.I.