

REFER TO SHEET #11 FOR CURB PLATE DETAIL

JOINT OPENING		
TEMP	'A'	'B'
-20° C.	64	114
-10° C.	56	106
0° C.	47	97
10° C.	39	89
20° C.	30	80
30° C.	22	72
40° C.	14	64

SHOP NOTES:

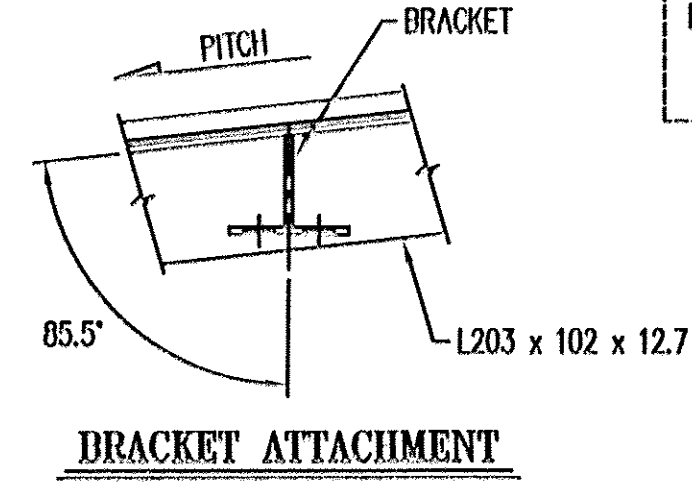
1. WORK THIS SHEET ALONG WITH STANDARD SHEET #8 AND CURB PLATE ASSEMBLY SHEETS.
2. COAT ALL BOLTS AND HEX COUPLER NUTS WITH NEVER SEIZE GREASE PRIOR TO ASSEMBLY.
3. WRENCH TIGHTEN BOLTS AFTER ASSEMBLY OF THE EXPANSION JOINT.
4. SEAL ALL ACCESSIBLE JOINTS PRIOR TO GALVANIZING.

CONTRACTOR NOTES:

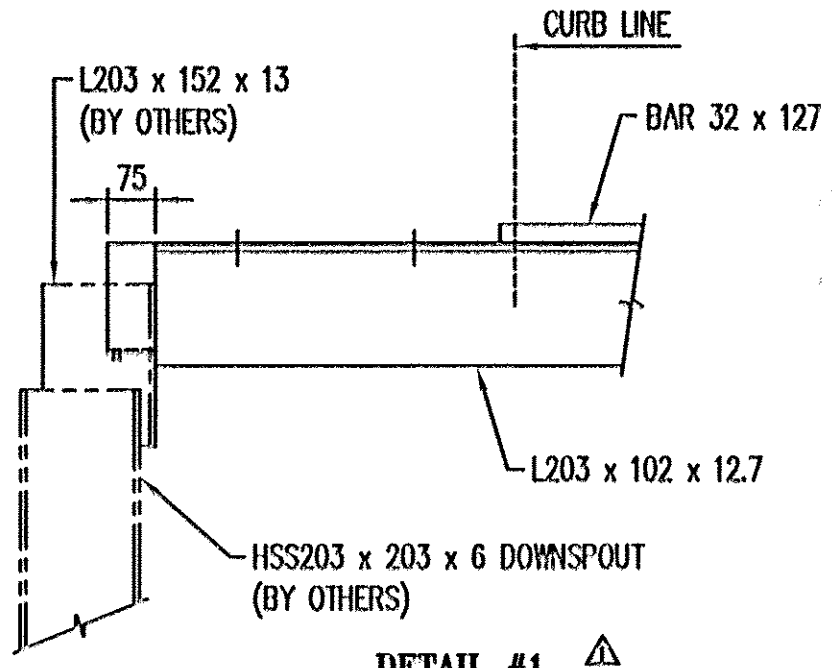
1. ADJUST JOINT OPENING TO PROPER DIMENSION PRIOR TO FIELD WELDING OF THRD RODS.
2. REMOVE SHIPPING ANGLES AND REPLACE WITH 19# x 57 HEX BOLTS. REUSE EXISTING FLAT WASHERS. COAT BOLT TRENDS WITH NEVER SEIZE GREASE PRIOR TO ASSEMBLY.
3. FILL ALL COUNTERBORED HOLES WITH HOT POURED JOINT SEALER AFTER THE BOLT INSTALLATION. WORK AND MATERIALS ARE TO BE DONE BY OTHERS.
4. TORUGH SHALL BE SHIPPED LOOSE AND FIELD INSTALLED BY OTHERS.

PLEASE CONFIRM 22mmØ HOLE, RECOMMENDED SIZE IS 20.5mmØ FOR A 19mmØ BOLT

ONE - EXPANSION JOINT - 10EJ1
ABUTMENT #2



REFER TO SHEET #12 FOR CURB PLATE DETAIL

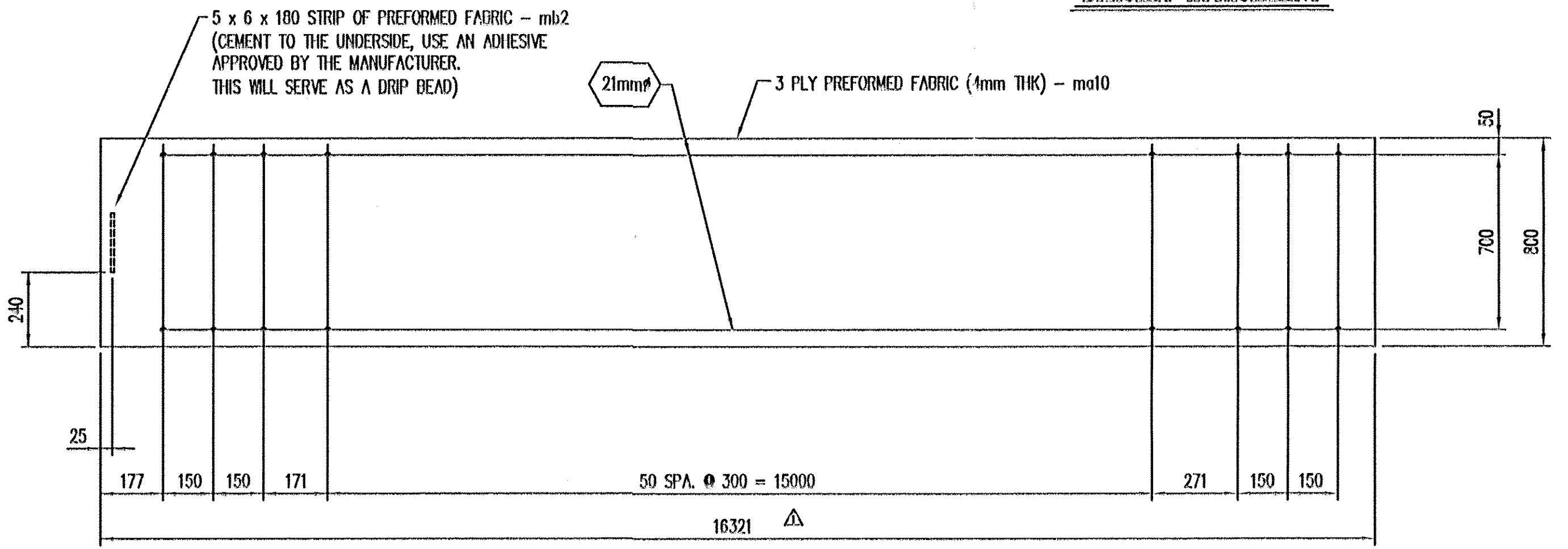


DETAIL #1

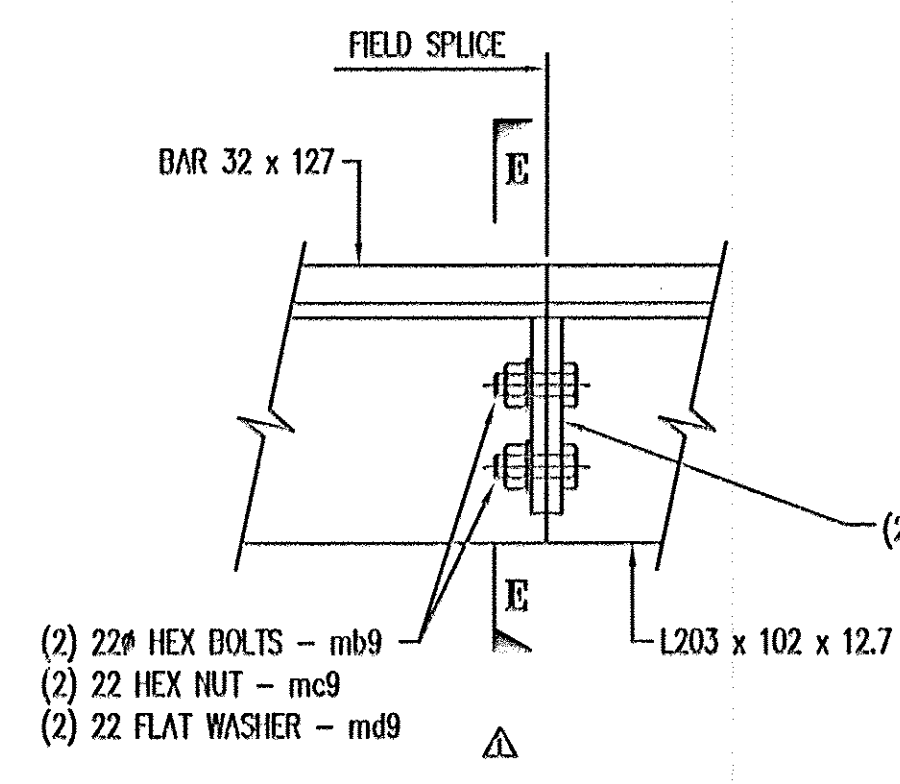
TVGA CONSULTANTS

NO EXCEPTIONS TAKEN
 FURNISH AS CORRECTED
 REVISE AND RESUBMIT
ENGINEER has reviewed Shop Drawings and Samples and Documents and complies with the design concept of the Contract Documents. Such reviews do not extend to means, methods, techniques, sequences or procedures of construction or to safety procedures and programs incident thereto. Such reviews do not extend to any LEED certification or accreditation. Contractor is responsible for dimensions to be confirmed and controlled at the job site, for information that pertains solely to the fabrication processes or to techniques of construction, and for coordination of the work of all trades.

BY: [Signature]
DATE: 1/15/08

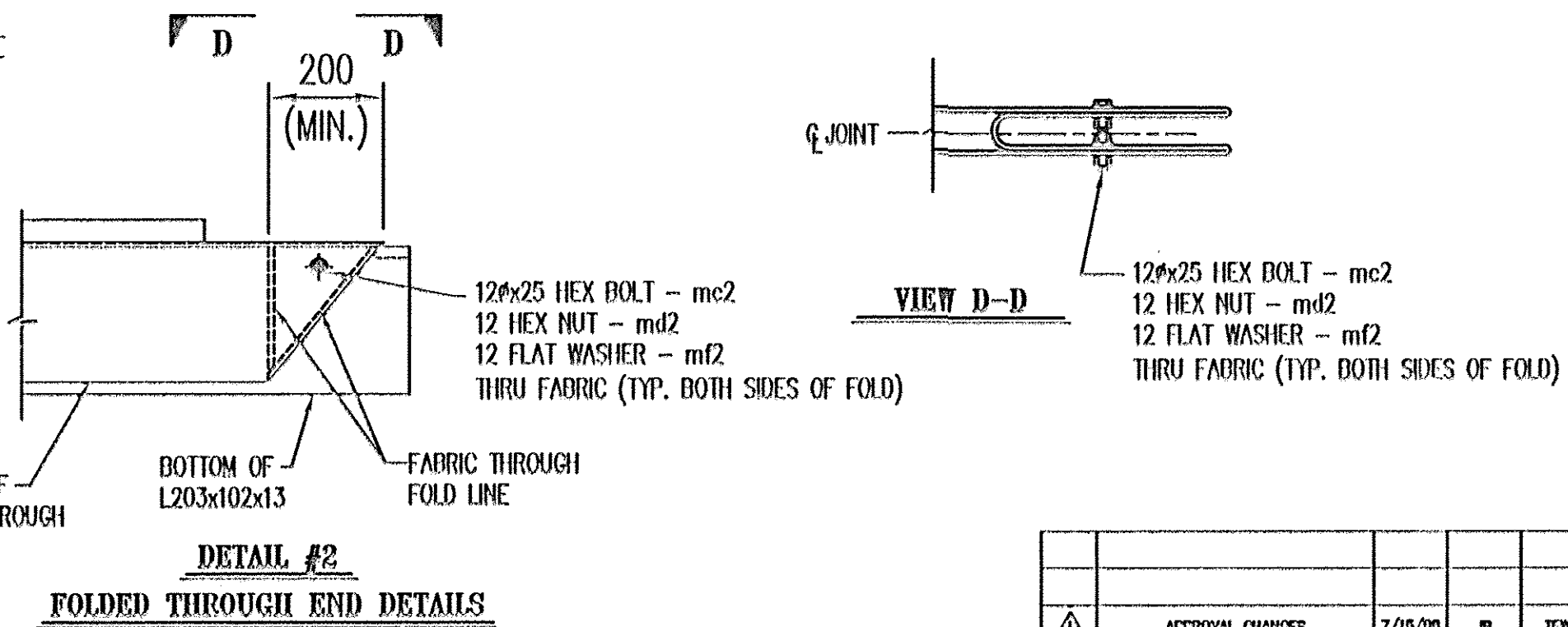
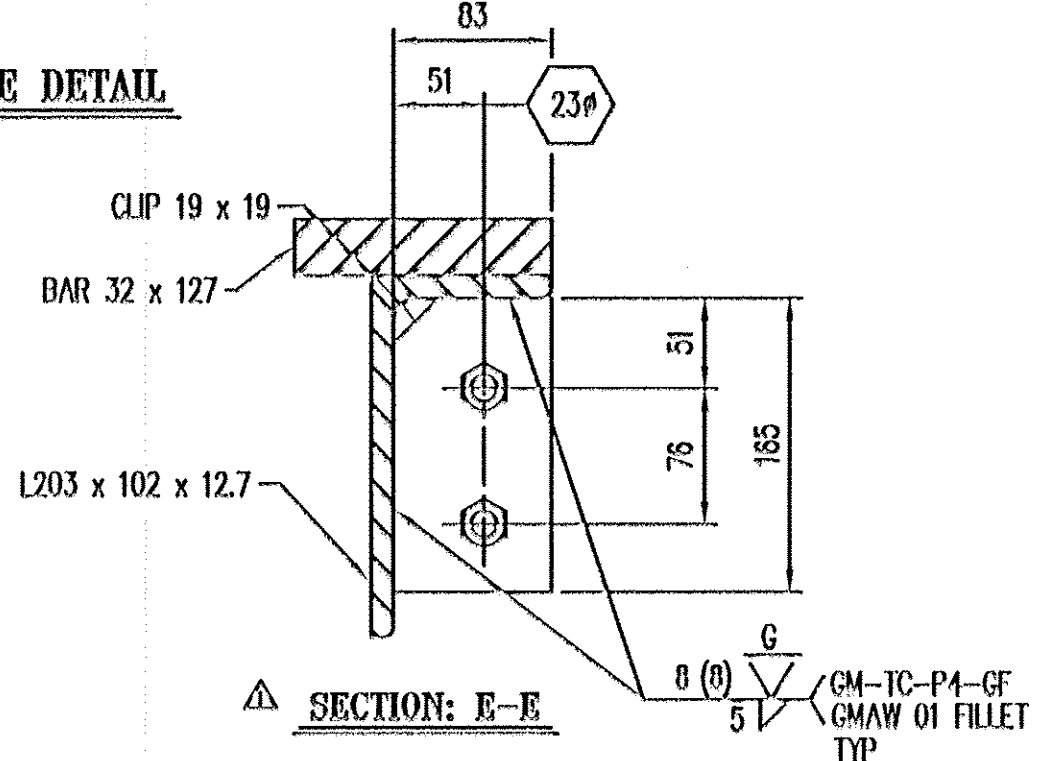


TROUGH DETAIL



BOLTED FIELD SPICE DETAIL

This joint shall be shipped partially assembled and spliced together on site.



BILL OF MATERIALS					
#	MARK No.	QTY	DESCRIPTION	MATERIAL	REMARKS
1			ONE - EXPANSION JOINT - 10EJ1		HDG
2	oa8	7	L102 x 102 x 12.7 x 293	A36	
3					
4	ma1	52	19# x 250 CONCRETE HEADED STUD	A108	
5	mb1	52	19# x 250 CONCRETE HEADED STUD	A108	BENT
6	mc1	2.5	2 x 76 BUTYL RUBBER TAPE (15.2M ROLL)	AASH10 M-190 #75305A15	
7	md1	102	19# x 57 HEX BOLT	A325	M/G
8	mf1	14	19# x 95 HEX BOLT	A325	M/G
9	mh1	114	19 FLAT WASHER	F436	M/G
10	mi1	114	19 HEX COUPLER NUT	A563	M/G
11	mo9	48	25# x 152 THREADED ROD	A36	HDG
12	ma1	96	25 HEAVY HEX NUT	A563	HDG
13	pa8	12	PL 14 x 195 x 275	M270M(250)	
14	pb8	12	PL 14 x 209 x 275	M270M(250)	
15	pc8	6	PL 14 x 225 x 275	M270M(250)	
16	pd1	96	PL 10 x 76 x 76	M270M(250)	HDG
17	oa10	ONE	L203 x 102 x 12.7 x 9174	M270M(250)	
18	ob10	ONE	L203 x 102 x 12.7 x 9174	M270M(250)	
19	oc10	ONE	L203 x 102 x 12.7 x 7072	M270M(250)	
20	od10	ONE	L203 x 102 x 12.7 x 7072	M270M(250)	
21	ba10	ONE	BAR 32 x 127 x 8647	M270M(250)	
22	bb10	ONE	BAR 32 x 127 x 8647	M270M(250)	
23	bc10	ONE	BAR 32 x 127 x 6545	M270M(250)	
24	bd10	ONE	BAR 32 x 127 x 6545	M270M(250)	
25	b19	4	BAR 12.7 x 89 x 165	AASH10 M270	
26	ma10	ONE	3 PLY FABRIC TROUGH 4 x 800 x 16321	PER SPEC	
27	mb2	ONE	3 PLY FABRIC DRIP 4 x 6 x 180	PER SPEC	CLASS 4.6 GALV
28	mc2	2	12 x 25 HEX BOLT	A590M	M/G
29	md2	2	12 HEX NUT	A563	M/G
30	mf2	4	12 FLAT WASHER	F436	M/G
31	mb2	ONE	ANTI SEIZE GREASE		
32	mb9	4	22# x 50 HEX BOLT	A325	M/G
33	mc9	4	22 HEX NUT	A563	M/G
34	md9	4	22 FLAT WASHER	F436	M/G

Niagara Bridge and Rail
4817 Henry Avenue, Niagara Falls, N.Y. 14304
Phone: (716) 283-4710 Fax: (716) 283-5137

STATE: VERMONT
COUNTY: BENNINGTON
CITY / TOWNSHIP: VT ROUTE 279 OVER FURNACE BROOK
PROJECT NO.: AC NH 018-(53)
OWNER: VT-AOT
CONTRACTOR:

Drawn By: JLB Date: 5/01/08 Checked By: TFW Date: 5/06/08
Description: VERMONT - EXPANSION JOINT DETAIL
Scale: 10 of 12 NONE
Drawing No.: 10063-01 Rev No.: 1

RECEIVED
OCT 22 2008
G.P.I.