

REFER TO SHEET #11 FOR CURB PLATE DETAIL

SHOP NOTES:

1. WORK THIS SHEET ALONG WITH STANDARD SHEET #0 AND CURB PLATE ASSEMBLY SHEETS.
2. COAT ALL BOLTS AND HEX COUPLER NUTS WITH NEVER SEIZE GREASE PRIOR TO ASSEMBLY.
3. WRENCH TIGHTEN BOLTS AFTER ASSEMBLY OF THE EXPANSION JOINT.
4. SEAL ALL ACCESSIBLE JOINTS PRIOR TO GALVANIZING.

CONTRACTOR NOTES:

1. ADJUST JOINT OPENING TO PROPER DIMENSION PRIOR TO FIELD WELDING OF THRD RODS.
2. REMOVE SHIPPING ANGLES AND REPLACE WITH 19# x 57 HEX BOLTS. REUSE EXISTING FLAT WASHERS. COAT BOLT TREADS WITH NEVER SEIZE PRIOR TO ASSEMBLY.
3. FILL ALL COUNTERBORED HOLES WITH HOT POURED JOINT SEALER AFTER THE BOLT INSTALLATION. WORK AND MATERIALS ARE TO BE DONE BY OTHERS.
4. TROUGH SHALL BE SHIPPED LOOSE AND FIELD INSTALLED BY OTHERS.

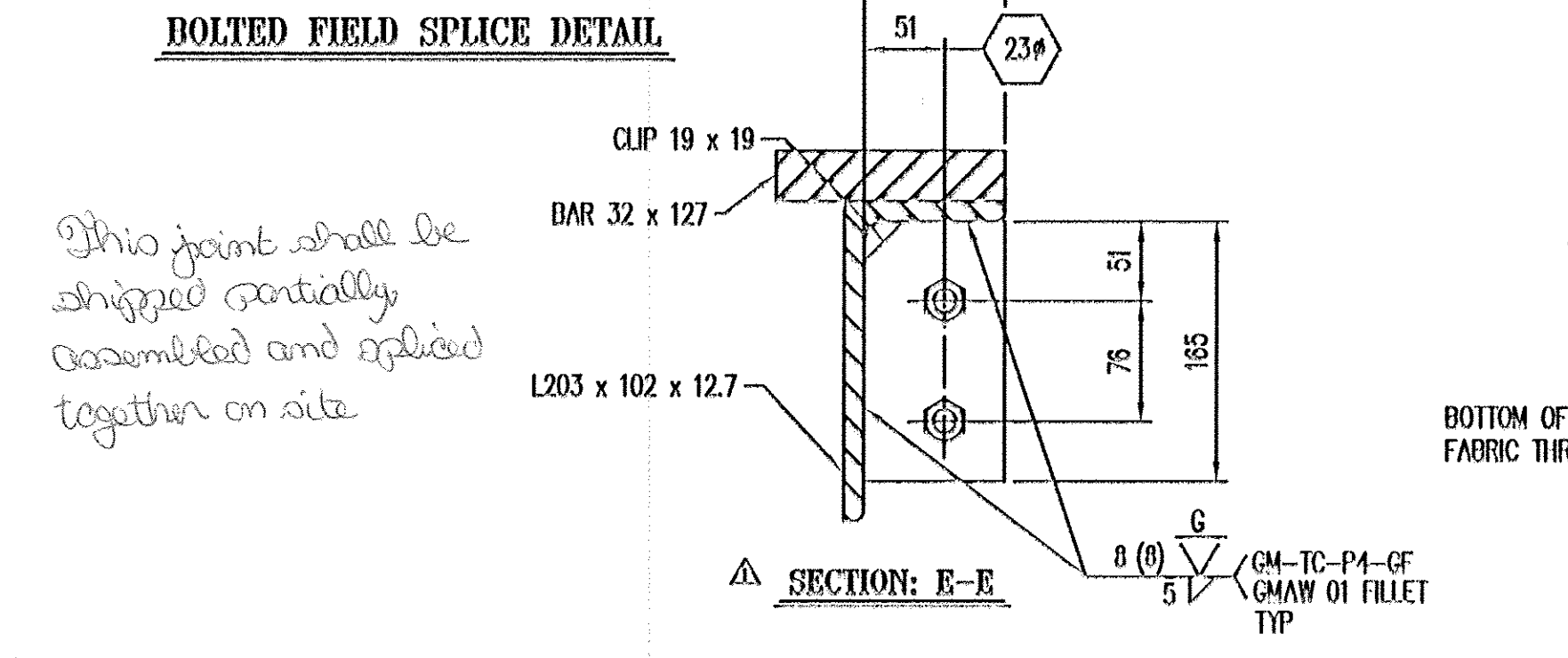
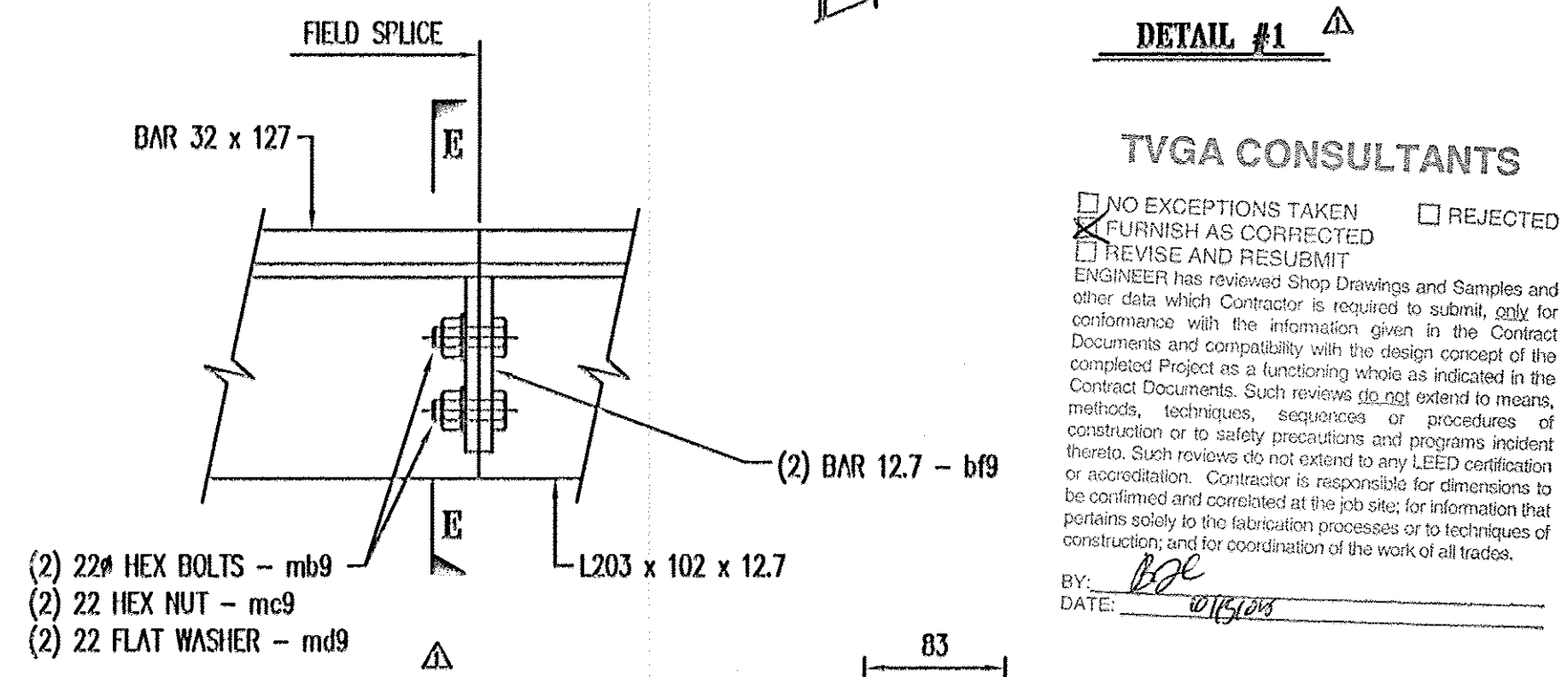
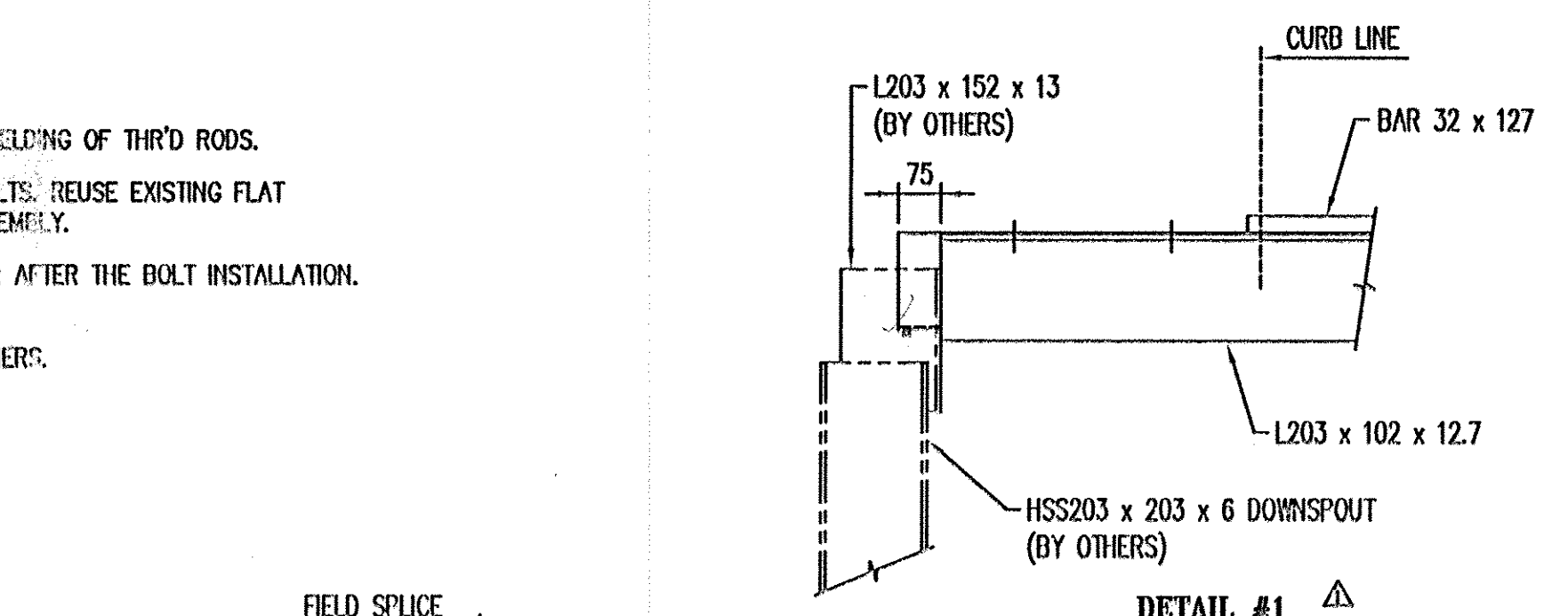
PLEASE CONFIRM 22mm# HOLE, RECOMMENDED SIZE IS 20.5mm# FOR A 19mm# BOLT

ONE - EXPANSION JOINT - 9EJ1
ABUTMENT #1

JOINT OPENING		
TEMP	'A'	'B'
-20° C.	64	114
-10° C.	56	106
0° C.	47	97
10° C.	39	89
20° C.	30	80
30° C.	22	72
40° C.	14	64

REFER TO SHEET #12 FOR CURB PLATE DETAIL

BILL OF MATERIALS					
#	MARK No.	QTY	DESCRIPTION	MATERIAL	REMARKS
1			ONE - EXPANSION JOINT - 9EJ1		IDG
2	oa8	7	L102 x 102 x 12.7 x 293	A36	
3					
4	ma1	52	19# x 250 CONCRETE HEADED STUD	A108	
5	mb1	52	19# x 250 CONCRETE HEADED STUD	A108	DENT
6	mc1	2.5	2 x 76 BUTYL RUBBER TAPE (15.2M ROLL)	AASHTO M-190	#75305A15
7	md1	102	19# x 57 HEX BOLT	A325	M/G
8	mf1	14	19# x 95 HEX BOLT	A325	M/G
9	mh1	114	19 FLAT WASHER	F436	M/G
10	mi1	114	19 HEX COUPLER NUT	A563	M/G
11	me9	48	25# x 152 THREADED ROD	A36	IDG
12	me1	96	25 HEAVY HEX NUT	A563	IDG
13	pe9	12	PL 14 x 195 x 275	M270M(250)	
14	pe8	12	PL 14 x 200 x 275	M270M(250)	
15	pe6	6	PL 14 x 225 x 225	M270M(250)	
16	pd1	96	PL 10 x 76 x 76	M270M(250)	IDG
17	oa9	ONE	L203 x 102 x 12.7 x 9174	M270M(250)	
18	oa8	ONE	L203 x 102 x 12.7 x 9174	M270M(250)	
19	oa9	ONE	L203 x 102 x 12.7 x 7072	M270M(250)	
20	oa9	ONE	L203 x 102 x 12.7 x 7072	M270M(250)	
21	ba9	ONE	BAR 32 x 127 x 0647	M270M(250)	
22	bb9	ONE	BAR 32 x 127 x 0647	M270M(250)	
23	bc9	ONE	BAR 32 x 127 x 6545	M270M(250)	
24	bd9	ONE	BAR 32 x 127 x 6545	M270M(250)	
25	bd9	4	BAR 12.7 x 89 x 165	AASHTO M270	
26	ma9	ONE	3 PLY FABRIC THROUGH 4 x 800 x 16321	PER SPEC	CLASS 4.6 GALV
27	mb2	ONE	3 PLY FABRIC DRIP 4 x 6 x 100	PER SPEC	
28	mc2	2	12 x 25 HEX BOLT	A560M	M/G
29	md2	2	12 HEX NUT	A563	M/G
30	mf2	4	12 FLAT WASHER	F436	M/G
31	mh2	ONE	ANTI SEIZE GREASE		
32	mi9	4	22# x 50 HEX BOLT	A325	M/G
33	mi9	4	22 HEX NUT	A563	M/G
34	md9	4	22 FLAT WASHER	F436	M/G

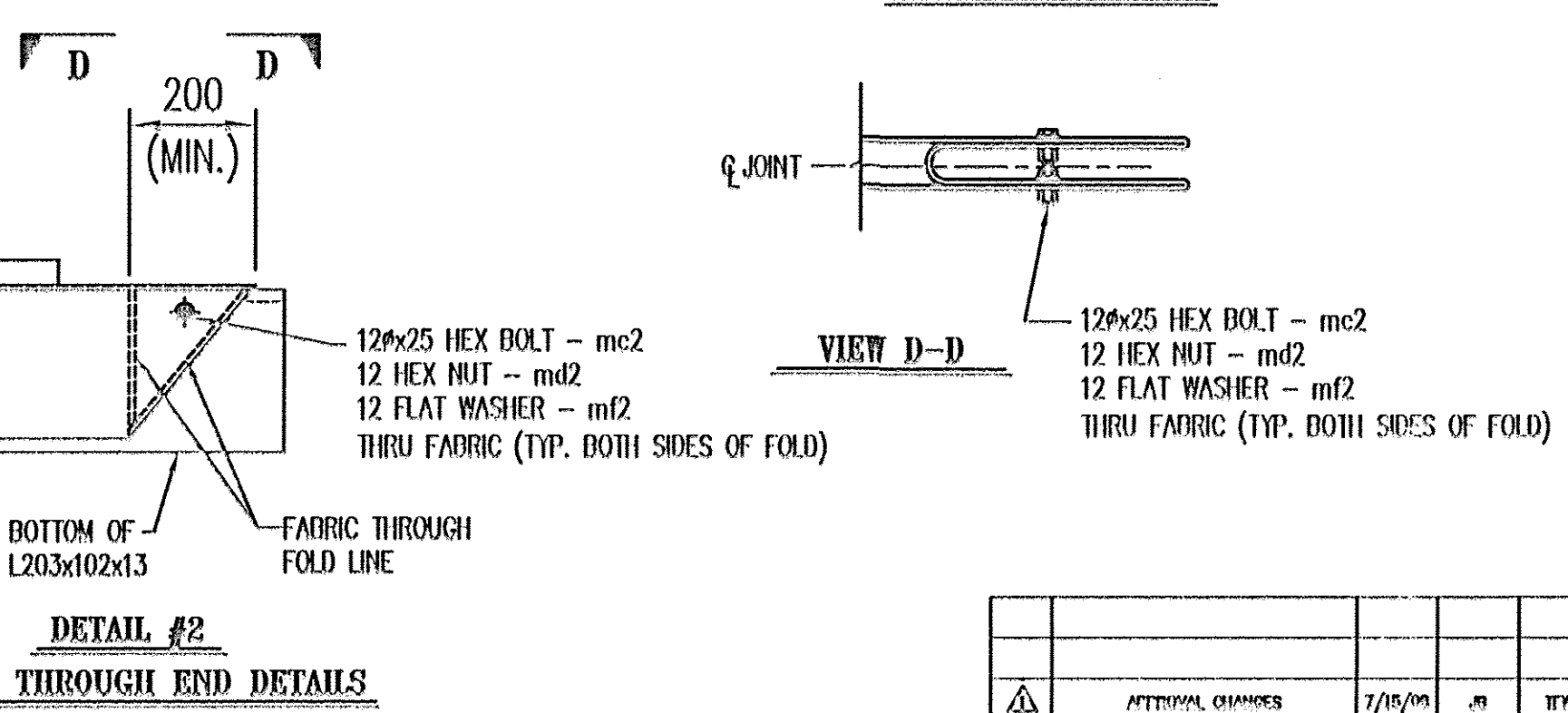
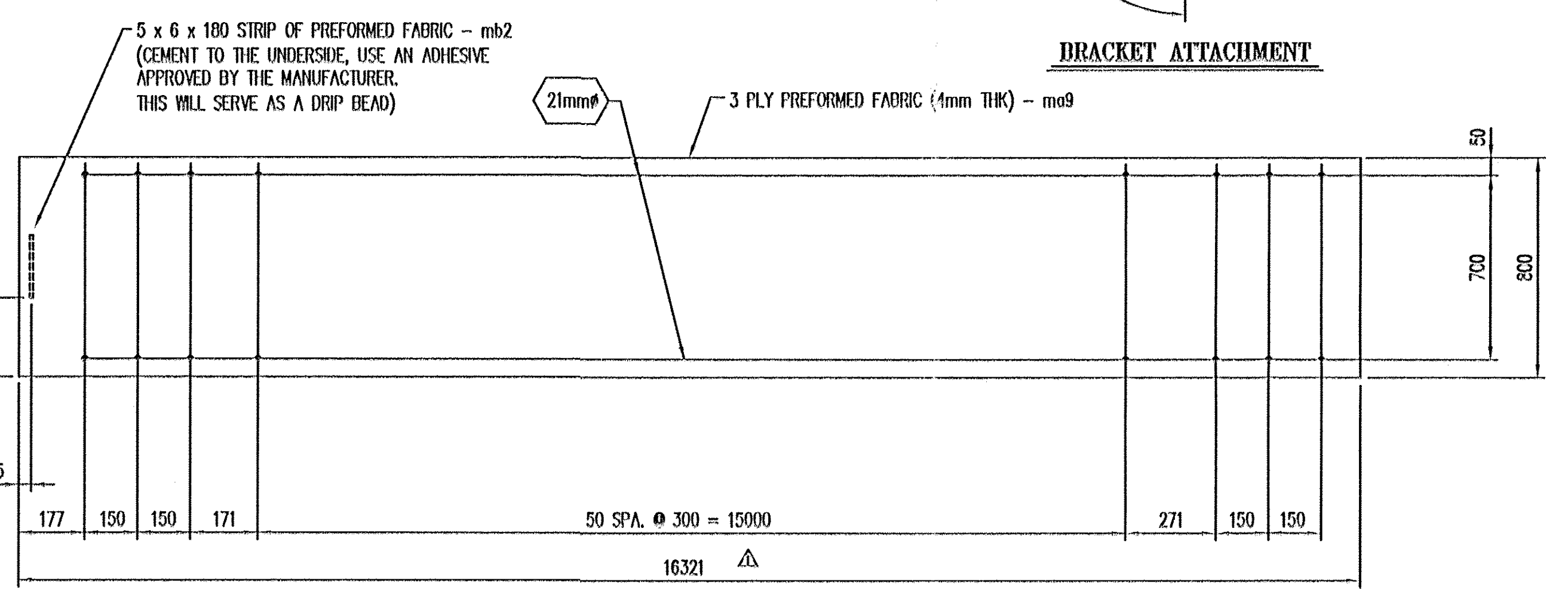
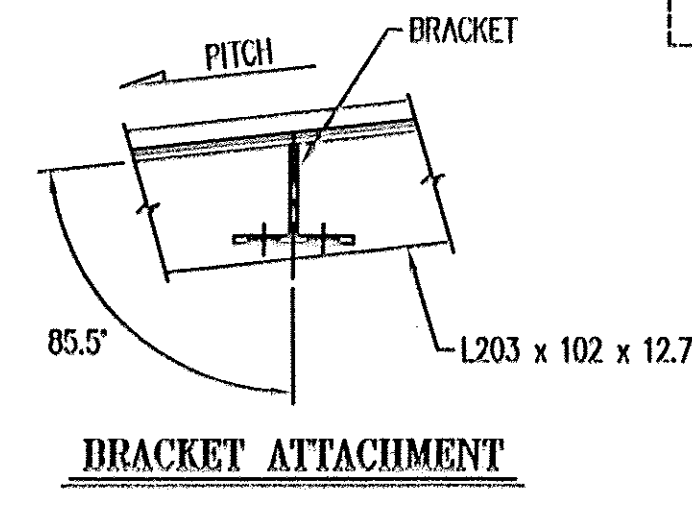


This joint shall be shipped partially assembled and spliced together on site

TVGA CONSULTANTS

NO EXCEPTIONS TAKEN UNLESS FURNISH AS CORRECTED BY REVISE AND RESUBMIT
 ENGINEER has reviewed Shop Drawings and Samples and other data which Contractor is required to submit, only for the completed Project as a functioning whole as indicated in the Contract Documents. Such review does not extend to means, methods, techniques, sequences or procedures of construction or to safety precautions and programs incident thereto. Such review is not intended to constitute certification or accreditation. Contractor is responsible for dimensions to be confirmed and coordinated at the job site; for information that pertains solely to the fabricator's processes or to techniques of construction; and for coordination of the work of all trades.
 BY: [Signature] DATE: 10/15/2008

FIELD SPICE



DETAIL #2 FOLDED THROUGH END DETAILS

RECEIVED
OCT 22 2008
G.P.I.

Niagara Bridge and Rail
4817 Henry Avenue, Niagara Falls, N.Y. 14304
Phone: (716) 283-4710 Fax: (716) 283-5137

Project Information:
STATE: VERMONT
COUNTY:
CITY / TOWNSHIP: DENNHURST
LOCATION: VT ROUTE 279 OVER FURNACE BROOK
PROJECT NO.: AC 101 018-1(53)
OWNER: VT-AOT
CONTRACTOR:

Drawn By: JAB Date: 5/01/08 Checked By: TFW Date: 5/06/08
 Description: VERMONT - EXPANSION JOINT DETAIL
 Scale: 9 of 12 NONE
 Drawing No.: 10063-01 Rev No.: 1