

**ERECTOR FRAMING PLAN**  
WORK THIS DRAWING WITH DRAWINGS E2

**LIST OF FIELD CONNECTIONS**

LINE	ACTUAL NUMBER REQ'D	BOLT DIAM.	BOLT LENGTH	BOLTS PER CONN.	NO. OF CONN.	GRIP	THICKNESS OF PIECES JOINED			PIECES CONNECTED AND REMARKS
1	128	7/8	3	64	2	41.6	14.3	13.0	14.3	WEB SPL @ FS1 G1-G2
2	64	7/8	3 1/4	32	2	50.8	15.9	19.0	15.9	TOP FLG SPL @ FS1 G1-G2
3	64	7/8	3 1/4	32	2	50.8	15.9	19.0	15.9	BOT FLG SPL @ FS1 G1-G2
4	20	7/8	2 3/4	10	2	36.5	22.2	14.3		BRG. STIFF. TO GUSS. PL
5	12	7/8	2 3/4	6	2	36.5	22.2	14.3		PIER BRG. STIFF. TO GUSS PL
6	108	7/8	2 1/2	6	18	28.6	14.3	14.3		INTERMEDIATE CONN. PL. TO GUSS. PL

**LIST OF FIELD CONNECTIONS**

LINE	ACTUAL NUMBER REQ'D	BOLT DIAM.	BOLT LENGTH	BOLTS PER CONN.	NO. OF CONN.	GRIP	THICKNESS OF PIECES JOINED			PIECES CONNECTED AND REMARKS
1	20	7/8	2 3/4	10	2	36.5	22.2	14.3		BRG. STIFF. TO GUSS. PL. (TYPE 1)

**FIELD BOLT SUMMARY - SHIP. #2**

- (2% ADDITIONAL BOLTS ADDED + 3 EA. FOR TESTING)
- AASHTO M164 TYPE 1; W/H VY HEX HD (RCT)
  - 25 - 7/8"Ø HIGH STRENGTH BOLTS x 0'-2 3/4
  - AASHTO M164 TYPE 3; W/H VY HEX HD (RCT)
  - 134 - 7/8"Ø HIGH STRENGTH BOLTS x 0'-3 1/4
  - 134 - 7/8"Ø HIGH STRENGTH BOLTS x 0'-3
  - 37 - 7/8"Ø HIGH STRENGTH BOLTS x 0'-2 3/4
  - 113 - 7/8"Ø HIGH STRENGTH BOLTS x 0'-2 1/2
  - AASHTO M291 GRADE DH; H VY HEX (RCT)
  - 25 - NUTS FOR 7/8"Ø BOLT
  - AASHTO M291 GRADE DH B; H VY HEX (RCT)
  - 418 - NUTS FOR 7/8"Ø BOLT
  - AASHTO M293; ROUND & FLAT (RCT)
  - 25 - STD WASHERS FOR 7/8"Ø BOLT
  - AASHTO M293 WEATHERING; ROUND & FLAT (RCT)
  - 418 - STD WASHERS FOR 7/8"Ø BOLT

**SHIPPING PIECES**

SHIPPING PIECE MARK	WEIGHT EA (KG)	QTY
G1A	7,942	1
G2A	7,942	2
G1B	11,602	3
G2B	11,602	4
CF1	273	5
CF2	273	5
CF3	158	6
CF4	160	6
CF5	160	7

**NOTES:**

NO CREDIT WILL BE ALLOWED FOR WORK PERFORMED BY OTHERS IN REPLACING OR CORRECTING MATERIALS OR WORKMANSHIP COVERED BY THIS DRAWING UNLESS EXPRESSLY AUTHORIZED BY HIGH STEEL STRUCTURES, INC. HIGH STEEL STRUCTURES, INC. DOES NOT SUPPLY STUD SHEER CONNECTORS, EXPANSION DAM MATERIAL, SCUPPERS OR ANY OTHER BRIDGE DRAINAGE, BEARINGS, BEARING PADS OR ANCHOR BOLTS.

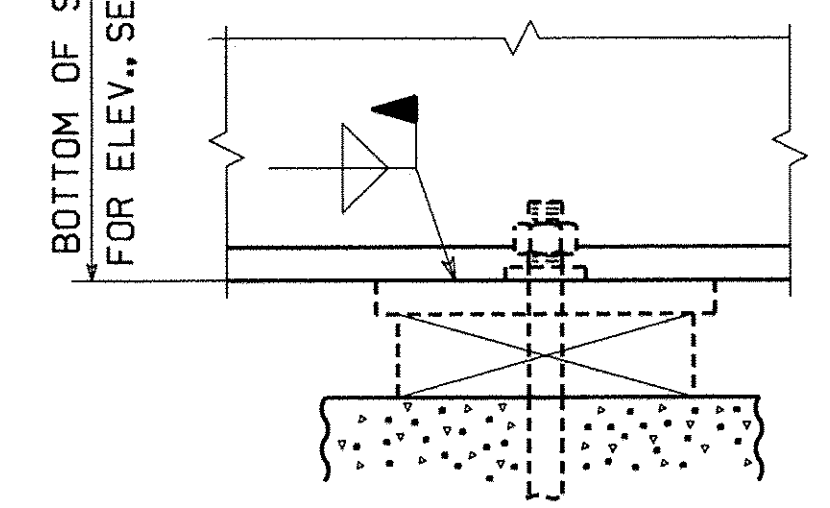
**NOTICE TO ERECTOR & CONTRACTOR:** THIS STRUCTURAL STEEL IS BEING DELIVERED WITH THE FINAL FINISH COAT APPLIED. USE EXTREME CARE AND APPROPRIATE EQUIPMENT FOR HANDLING DURING ERECTION AND SUBSEQUENT FIELD OPERATIONS. HIGH STEEL STRUCTURES, INC. WILL NOT BE RESPONSIBLE FOR ANY TOUCH-UP REQUIRED DUE TO YOUR FAILURE TO PROPERLY PROTECT FINISH PAINT.

**ERECTOR NOTE:** ELEVATIONS, CAMBER CHECKS AND HORIZONTAL ALIGNMENT OF FIELD SPLICES MUST BE COMPLETED PRIOR TO FINAL BOLTING. HIGH STEEL STRUCTURES IS TO BE NOTIFIED AND CONSULTED, PRIOR TO FINAL BOLTING, IF SPLICE LOCATIONS ARE NOT WITHIN ACCEPTABLE TOLERANCE. BOTH VERTICAL & HORIZONTAL CORRECTION OF ANY UNACCEPTABLE SPLICES AFTER FINAL BOLTING WILL BE AT NO COST TO HIGH STEEL STRUCTURES.

**NOTICE:** WEIGHTS OF MEMBERS LISTED ON THESE DRAWINGS ARE ESTIMATED WEIGHTS AND ACTUAL WEIGHTS WILL VARY. HIGH STEEL STRUCTURES, INC. WILL NOT BE RESPONSIBLE FOR ANY ERECTION PROCEDURES, SHIPPING PROCEDURES, ETC. DEVELOPED USING ESTIMATED WEIGHTS AS SHOWN. ALL DIMENSIONS ARE GIVEN HORIZONTALLY (U.N.). ALL ELEVATIONS AND STATIONS ARE GIVEN IN METERS. DIMENSIONS GIVEN THUS: (29 440) ARE THE SHIPPING LENGTHS OUT TO OUT OF FASCIA GIRDERS.

**ERECTOR NOTE:** ALL BOLTS MUST BE LOCATED IN ACCORDANCE WITH THE LIST OF FIELD CONNECTIONS. HIGH STEEL STRUCTURES WILL NOT BE RESPONSIBLE FOR FURNISHING ADDITIONAL BOLTS OR FOR ANY OTHER RELATED COSTS OR DAMAGES RESULTING FROM IMPROPER LOCATION OF BOLTS. ALL FIELD BOLTS THRU WEB OF FASCIA GIRDERS ARE TO HAVE HEADS ON OUTSIDE OF WEB. ALL FIELD BOLTS THRU BOTTOM FLANGE ARE TO HAVE HEADS UP. (RCT) INDICATES ROTATIONAL CAPACITY TESTED BOLTS. DO NOT MIX NUTS, BOLTS AND WASHERS FROM DIFFERENT CONTAINERS UNLESS ALL NUTS, BOLTS AND WASHERS HAVE THE SAME LOT NUMBER. ANCHOR BOLTS AND NUTS MUST BE SET BEFORE CROSSFRAMES AT BEARINGS ARE ERECTED.

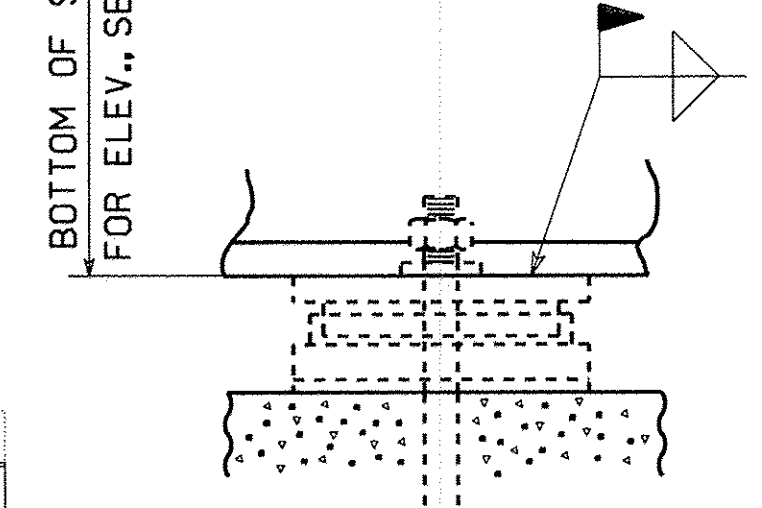
**CONTRACTOR NOTE:**  
ELEVATIONS ARE GIVEN TO BOTTOM OF STEEL - DO NOT POUR TO FINAL ELEVATIONS WITHOUT VERIFICATION OF BEARING HEIGHTS AND BRIDGE SEATS.



**SECTION A**

LINE	ABUT. 1	PIER	ABUT 2
G1	242.050	242.268	242.484
G2	242.100	242.318	242.534

**CONTRACTOR NOTE:**  
ELEVATIONS ARE GIVEN TO BOTTOM OF STEEL - DO NOT POUR TO FINAL ELEVATIONS WITHOUT VERIFICATION OF BEARING HEIGHTS AND BRIDGE SEATS.



**SECTION B**

NO.	REVISION	BY	CHK'D	DATE
<b>ERECTOR FRAMING PLAN</b> SHARED USE PATH OVER VT ROUTE 279 SHARED USE PATH STA. 1+148.400 TO STA. 1+220.200 TOWN OF BENNINGTON VERMONT, BRIDGE B11 STATE OF VERMONT AGENCY OF TRANSPORTATION				
SCALE	AC NH 019-1(53)	FED. AID PROJ. NO.		
N.T.S.	GENERAL CONTRACTOR J.A. McDONALD, INC.	HSSI PROJ. MGR	DEB KUPRES	
SHIPMT	2	DRAWING MANAGER BRITIGAN (IH)	MADE BY MAF	CHK'D BY CS
STATE	VT	HSSI PROJECT NUMBER S-1070147	HSSI STRUCT. ID C	DRAWING NUMBER E1 OF E2

Scale = 0.009500 of full size.

SHIPMENT 01 PAKING: 500228L1 PRD: 500228D5 SHIP/PACKET: 500228L5

By: Mkrred1 PLOTTED: 10/22/2007 2:42:28 PM