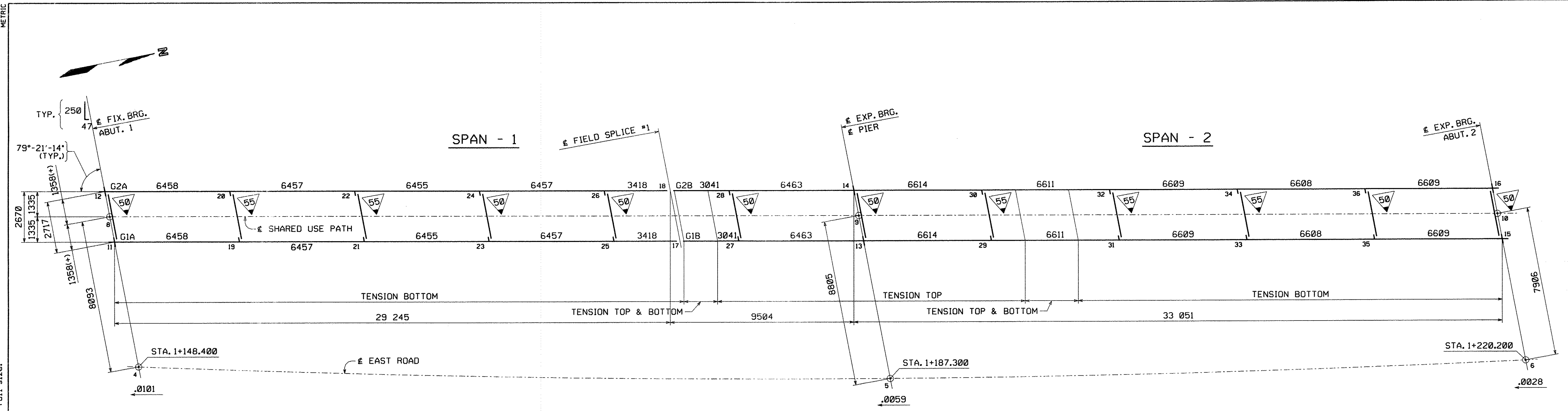


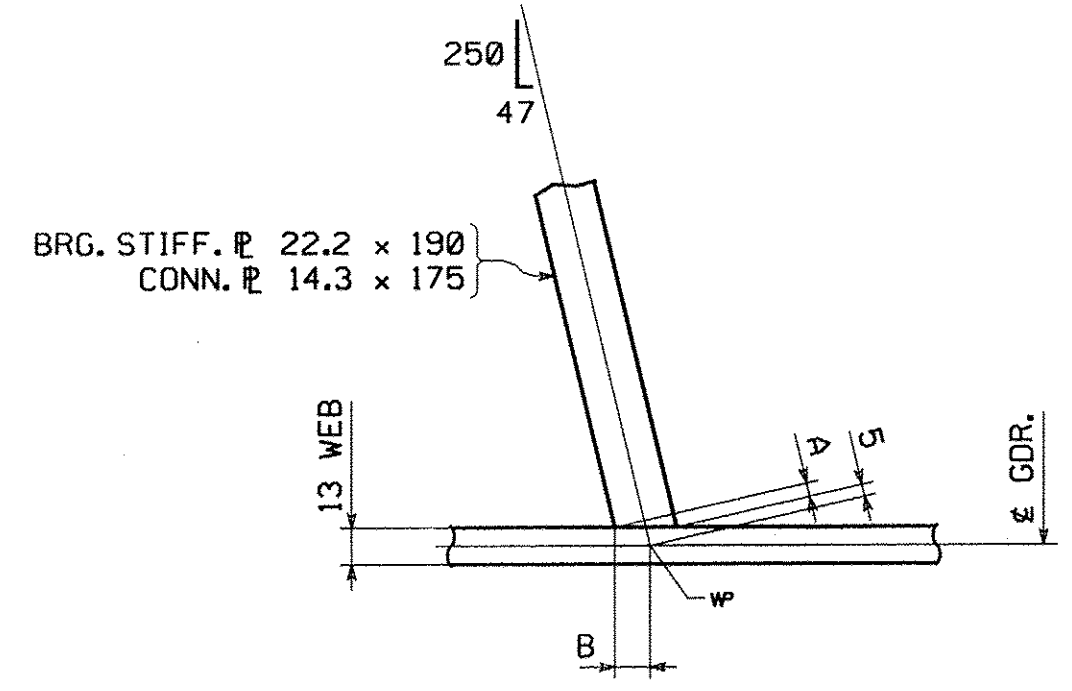
METRIC  
 Scale = 0.009500 of full size.  
 SHIPMENT 01  
 BY: MK/veidai  
 PLOTTED: 10/2/2007 2:42:47 PM  
 60



**CALCULATION PLAN**

SHOP DRAWINGS ARE REVIEWED UNLESS NOTED OTHERWISE	
NO EXCEPTION TAKEN	
REVISE AS NOTED	
PERMISSION NOT REQUIRED	<input checked="" type="checkbox"/>
REVISE AS NOTED	
PERMISSION REQUIRED	
REJECTED	
DATE	10/24/07
SIGNATURE	<i>Michael Chertoff</i>
<small>           REVIEW BY STANTEC IS FOR THE SOLE PURPOSE OF ASCERTAINING GENERAL CONFORMITY WITH DESIGN. CONTRACTOR IS RESPONSIBLE FOR DIMENSIONS, FABRICATION AND CONSTRUCTION METHODS, COORDINATION OF SUB-TRADES, DETAIL DESIGN OF COMPONENTS, AND ERRORS OR OMISSIONS ON SHOP DRAWINGS.         </small>	

- See comment on Drawing E1



**SKewed BRG. STIFF. & CONN. P. LAYOUT**

	A	B
BRG. STIFF.	4	13
CONN. P.	3	8

**NOTES:**

DIMENSIONS ON PLAN ALONG GIRDERS ARE GIVEN TO THE CHORD AT THE BOTTOM OF WEB IN FULLY CAMBERED POSITION. ALL OTHER DIMENSIONS ARE GIVEN HORIZONTALLY.  
 DIMENSIONS PLACED ON THE GIRDER LINES REPRESENT CROSSFRAME SPACING. FIGURES GIVEN THUS:  $\pm 0.01$  ARE THE GRADES OF THE GIRDERS AT THE BEARINGS IN FINAL POSITION; ARROW POINTS DOWNGRADE.  
 ALL STIFFENER AND CONNECTION PLATE SPACINGS ARE GIVEN TO P. PLATE. ENDS OF GIRDERS AND ALL BEARING STIFFENERS TO BE VERTICAL IN FINAL POSITION.  
 ALL STEEL TO BE ASTM AASHTO M270M GRADE 345W (U.N.). ALL FIELD CONNECTIONS TO BE MADE WITH  $\frac{3}{8}$ " H.S. (AASHTO M164 TYPE 3) BOLTS IN  $\frac{15}{16}$ " HOLES (U.N.).  
 FIGURES GIVEN THUS:  $\Delta$  ARE THE DIFFERENCES IN ELEVATIONS OF GIRDERS (IN THE PLANE OF THE CROSSFRAME IN FINAL POSITION) AT CROSSFRAMES; ARROW POINTS TOWARD LOW GIRDER.  
 FOR TYPICAL DETAIL LAYOUTS, SEE DRAWINGS PREFIXED 'TD'. ALL STATIONS ARE GIVEN IN METERS.

**\*\*NOTE\*\***  
 THE PURPOSE OF THIS DRAWING IS TO COORDINATE GEOMETRIC CONTROL INFORMATION. THIS DRAWING IS SUBMITTED FOR INFORMATION ONLY AND IS NOT INTENDED FOR SHOP FABRICATION. THIS DRAWING IS FOR REFERENCE ONLY, APPROVAL IS NOT REQUIRED.

NO.	REVISION	BY	CHK'D	DATE
<b>WORKSHEET - CALCULATION PLAN</b> SHARED USE PATH OVER VT ROUTE 279 SHARED USE PATH STA. 1+148.400 TO STA. 1+220.200 TOWN OF BENNINGTON VERMONT, BRIDGE B11 STATE OF VERMONT AGENCY OF TRANSPORTATION				
SCALE	AC NH 019-1(53)	FED. AID PROJ. NO.		
N.T.S.	GENERAL CONTRACTOR J.A. McDONALD, INC.	HSSI PROJ. MGR	HSSI CHK'D BY DEB KUPRES	
SHPMT	2	DRAWING MANAGER BRITIGAN (IH)	MADE BY EES	CHK'D BY CS DATE 9-25-07
STATE	VT	HSSI PROJECT NUMBER S-1070147	HSSI STRUCT. ID C	DRAWING NUMBER WS1 OF WS1