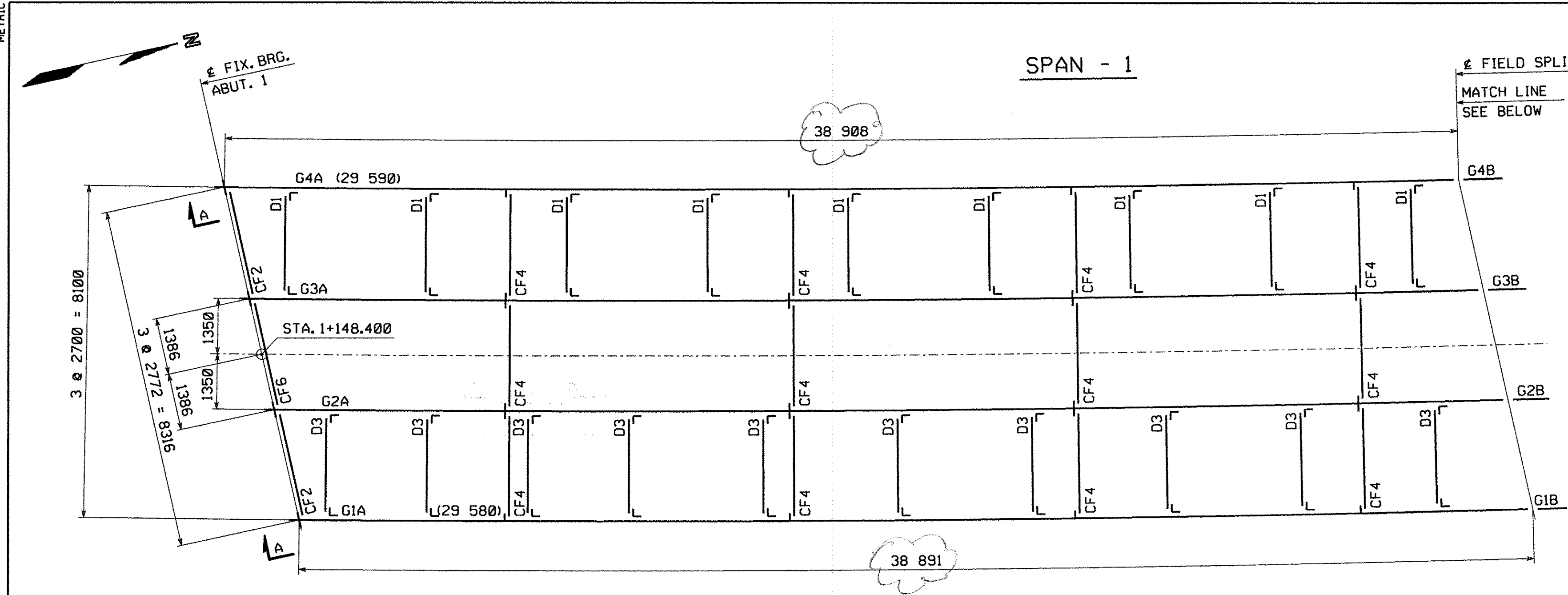
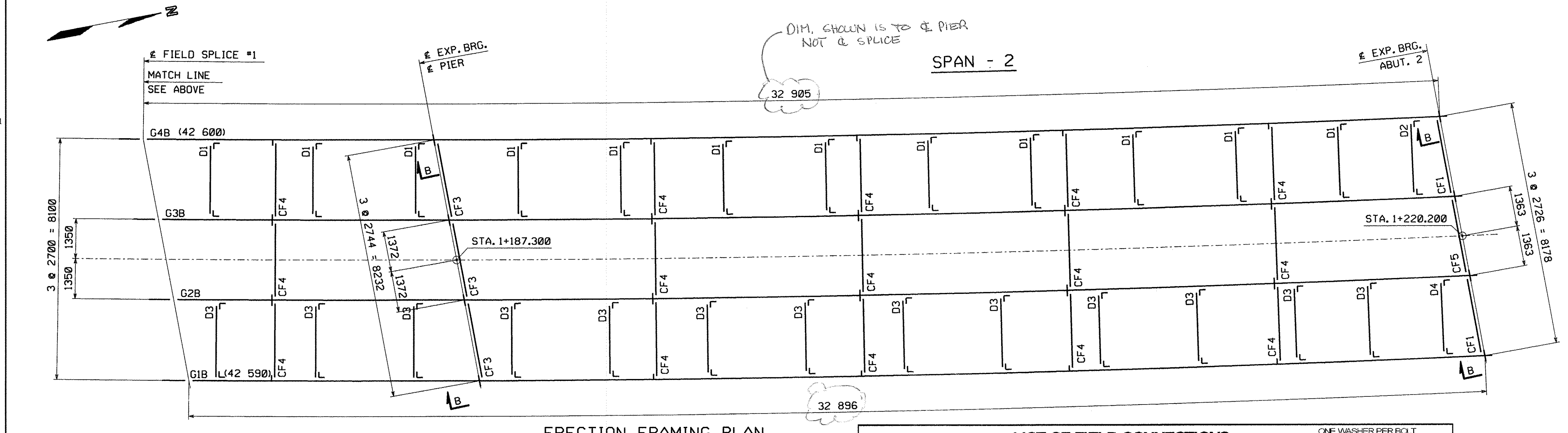


METRIC
Scale = 0.012500 of full size.
SHIPMENT 01
BY: MKredel
PLOTTER: 10/1/2007 11:07:49 AM
PH: ENCL 50023811 PRD: 50023812 SHIPARECT: 50023813



ERECTOR FRAMING PLAN



ERECTOR FRAMING PLAN

NOTES:

NO CREDIT WILL BE ALLOWED FOR WORK PERFORMED BY OTHERS IN REPLACING OR CORRECTING MATERIALS OR WORKMANSHIP COVERED BY THIS DRAWING UNLESS EXPRESSLY AUTHORIZED BY HIGH STEEL STRUCTURES, INC. HIGH STEEL STRUCTURES, INC. DOES NOT SUPPLY STUD SHEER CONNECTORS, EXPANSION DAM MATERIAL, ROD HANGERS OR HARDWARE AT UTILITIES, SCUPPERS OR ANY OTHER BRIDGE DRAINAGE, BEARINGS, BEARING PADS OR ANCHOR BOLTS. NOTICE TO ERECTOR & CONTRACTOR: THIS STRUCTURAL STEEL IS BEING DELIVERED WITH THE FINAL FINISH COAT APPLIED. USE EXTREME CARE AND APPROPRIATE EQUIPMENT FOR HANDLING DURING ERECTION AND SUBSEQUENT FIELD OPERATIONS. HIGH STEEL STRUCTURES, INC. WILL NOT BE RESPONSIBLE FOR ANY TOUCH-UP REQUIRED DUE TO YOUR FAILURE TO PROPERLY PROTECT FINISH PAINT. ERECTOR NOTE: ELEVATIONS, CAMBER CHECKS AND HORIZONTAL ALIGNMENT OF FIELD SPLICES MUST BE COMPLETED PRIOR TO FINAL BOLTING. HIGH STEEL STRUCTURES IS TO BE NOTIFIED AND CONSULTED, PRIOR TO FINAL BOLTING, IF SPLICE LOCATIONS ARE NOT WITHIN ACCEPTABLE TOLERANCE. BOTH VERTICAL & HORIZONTAL CORRECTION OF ANY UNACCEPTABLE SPLICES AFTER FINAL BOLTING WILL BE AT NO COST TO HIGH STEEL STRUCTURES. NOTICE: WEIGHTS OF MEMBERS LISTED ON THESE DRAWINGS ARE ESTIMATED WEIGHTS AND ACTUAL WEIGHTS WILL VARY. HIGH STEEL STRUCTURES, INC. WILL NOT BE RESPONSIBLE FOR ANY ERECTION PROCEDURES, SHIPPING PROCEDURES, ETC. DEVELOPED USING ESTIMATED WEIGHTS AS SHOWN. ALL DIMENSIONS ARE GIVEN HORIZONTALLY (U.N.). ALL ELEVATIONS AND STATIONS ARE GIVEN IN METERS. DIMENSIONS GIVEN THUS: (29 580) ARE THE SHIPPING LENGTHS OUT TO OUT OF FASCIA GIRDERS. ERECTOR NOTE: ALL BOLTS MUST BE LOCATED IN ACCORDANCE WITH THE LIST OF FIELD CONNECTIONS. HIGH STEEL STRUCTURES WILL NOT BE RESPONSIBLE FOR FURNISHING ADDITIONAL BOLTS OR FOR ANY OTHER RELATED COSTS OR DAMAGES RESULTING FROM IMPROPER LOCATION OF BOLTS. ALL FIELD BOLTS THRU WEB OF FASCIA GIRDERS ARE TO HAVE HEADS ON OUTSIDE OF WEB. ALL FIELD BOLTS THRU BOTTOM FLANGE ARE TO HAVE HEADS UP. (RCT) INDICATES ROTATIONAL CAPACITY TESTED BOLTS. DO NOT MIX NUTS, BOLTS AND WASHERS FROM DIFFERENT CONTAINERS UNLESS ALL NUTS, BOLTS AND WASHERS HAVE THE SAME LOT NUMBER. ANCHOR BOLTS AND NUTS MUST BE SET BEFORE CROSSFRAMES AT BEARINGS ARE ERECTED.

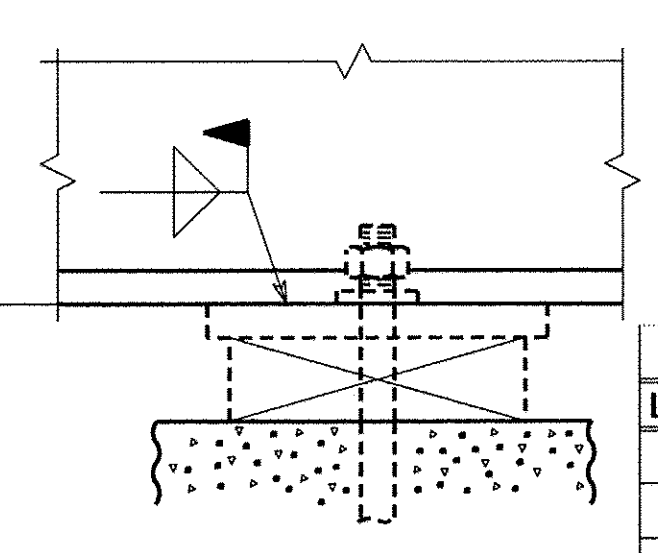
SHIPPING PIECES		
SHIPPING PIECE MARK	WEIGHT (KG)	DWG NO.
G1A	11,248	1
G2A	11,377	2
G3A	11,371	3
G4A	11,247	4
G1B	15,763	5
G2B	15,923	6
G3B	15,916	7
G4B	15,759	8
D1	45	12
D2	45	12
D3	45	12
D4	45	12
CF1	339	9
CF2	343	9
CF3	258	10
CF4	257	10
CF5	339	11
CF6	343	11

FIELD BOLT SUMMARY - SHIP. #1

(2% ADDITIONAL BOLTS ADDED + 3 EA. FOR TESTING)

AASHTO M164 TYPE 1 (RCT); W/HVY HEX HD	
125	- 7/8" HIGH STRENGTH BOLTS x 0'-2 3/4
13	- 7/8" HIGH STRENGTH BOLTS x 0'-2 1/4
AASHTO M164 TYPE 3 (RCT); W/HVY HEX HD	
231	- 7/8" HIGH STRENGTH BOLTS x 0'-4 1/4
166	- 7/8" HIGH STRENGTH BOLTS x 0'-3 1/2
370	- 7/8" HIGH STRENGTH BOLTS x 0'-3
125	- 7/8" HIGH STRENGTH BOLTS x 0'-2 3/4
664	- 7/8" HIGH STRENGTH BOLTS x 0'-2 1/2
183	- 7/8" HIGH STRENGTH BOLTS x 0'-2 1/4
AASHTO M291 GRADE DH (RCT); HVY HEX	
138	- NUTS FOR 7/8" BOLT
AASHTO M291 GRADE DH3 (RCT); HVY HEX	
1,739	- NUTS FOR 7/8" BOLT
AASHTO M293 (RCT); ROUND & FLAT	
138	- STD WASHERS FOR 7/8" BOLT
AASHTO M293 WEATHERING (RCT); ROUND & FLAT	
1,739	- STD WASHERS FOR 7/8" BOLT

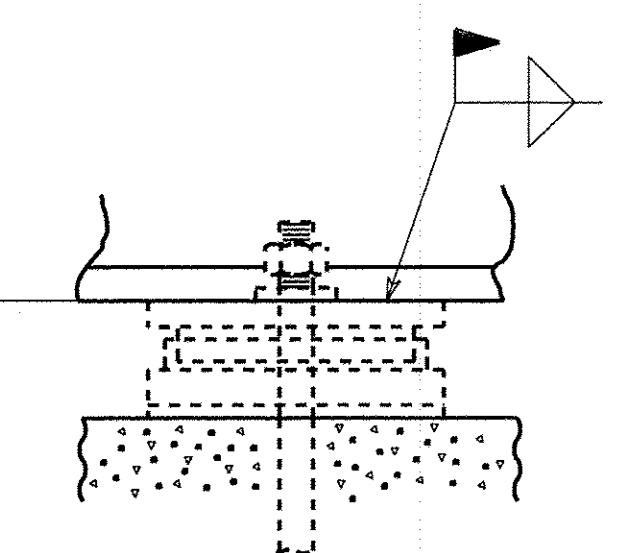
CONTRACTOR NOTE:
ELEVATIONS ARE GIVEN TO BOTTOM OF STEEL - DO NOT POUR TO FINAL ELEVATIONS WITHOUT VERIFICATION OF BEARING HEIGHTS AND BRIDGE SEATS.



SECTION A

ELEVATIONS			
LINE	ABUT. 1	PIER	ABUT. 2
G1	241.948	242.096	242.314
G2	241.890	242.039	242.257
G3	241.831	241.982	242.201
G4	241.772	241.925	242.145

CONTRACTOR NOTE:
ELEVATIONS ARE GIVEN TO BOTTOM OF STEEL - DO NOT POUR TO FINAL ELEVATIONS WITHOUT VERIFICATION OF BEARING HEIGHTS AND BRIDGE SEATS.



SECTION B

LIST OF FIELD CONNECTIONS										
LINE	ACTUAL NUMBER REQ'D	BOLT DIAM.	BOLT LENGTH	BOLTS PER CONN.	NO. OF CONN.	GRIP	THICKNESS OF PIECES JOINED			PIECES CONNECTED AND REMARKS
1	288	7/8	3	72	4	42.6	14.3	14.0	14.3	WEB SPL @ FS1 G1-G4
2	160	7/8	3 1/2	40	4	56.8	14.3	25.0	17.5	TOP FLG SPL @ FS1 G1-G4
3	224	7/8	4 1/4	56	4	73.3	19.1	32.0	22.2	BOT FLG SPL @ FS1 G1-G4
4	120	7/8	2 3/4	20	6	36.5	22.2	14.3		BRG STIFF. TO GUSS. PL
5	72	7/8	3	12	6	39.7	25.4	14.3		PIER BRG STIFF. TO GUSS. PL
6	648	7/8	2 1/2	12	54	28.6	14.3	14.3		INTERMEDIATE CONN. PL TO GUSS. PL
7	176	7/8	2 1/4	2	88	20.7	8.0	12.7		UTILITY SUPPORT TO CLIP "L"

LIST OF FIELD CONNECTIONS										
LINE	ACTUAL NUMBER REQ'D	BOLT DIAM.	BOLT LENGTH	BOLTS PER CONN.	NO. OF CONN.	GRIP	THICKNESS OF PIECES JOINED			PIECES CONNECTED AND REMARKS
1	120	7/8	2 3/4	20	6	36.5	22.2	14.3		BRG STIFF. TO GUSS. PL (TYPE 1)
2	8	7/8	2 1/4	2	4	20.7	8.0	12.7		UTILITY SUPPORT TO CLIP "L" (TYPE 1)

NO.	REVISION	BY	CHK'D	DATE
ERECTOR FRAMING PLAN EAST ROAD OVER VT ROUTE 279 EAST ROAD STA. 1+148.400 TO STA. 1+220.200 TOWN OF BENNINGTON VERMONT, BRIDGE B11 STATE OF VERMONT AGENCY OF TRANSPORTATION				
SCALE	N.T.S.	AC NH 019-1(53)	FED. AID PROJ. NO.	
GENERAL CONTRACTOR	J.A. McDONALD, INC.		HSSI PROJ. MGR	DEB KUPRES
DRAWING MANAGER	BRITIGAN (IH)	MADE BY	MAF	CHK'D BY CS
DATE	9-27-07			
STATE	VT	HSSI PROJECT NUMBER	S-1070147	HSSI STRUCT. ID
		DRAWING NUMBER	E1 OF E2	