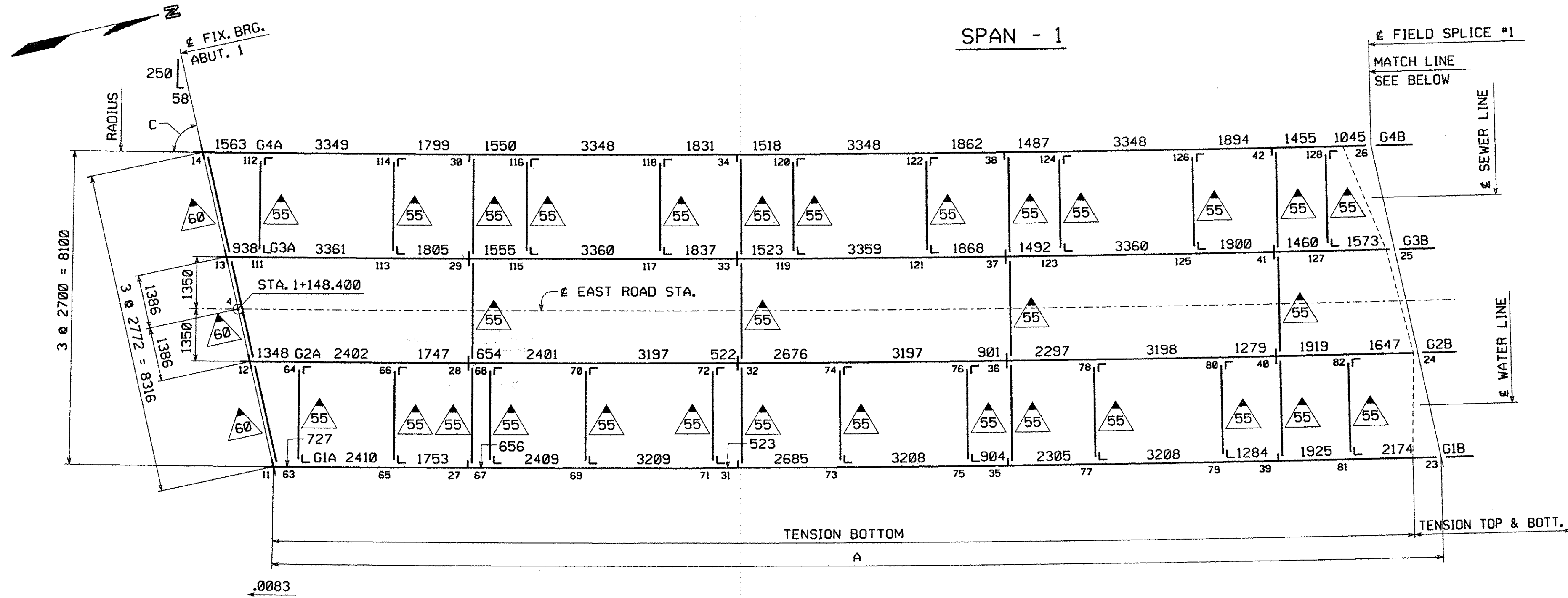


METRIC

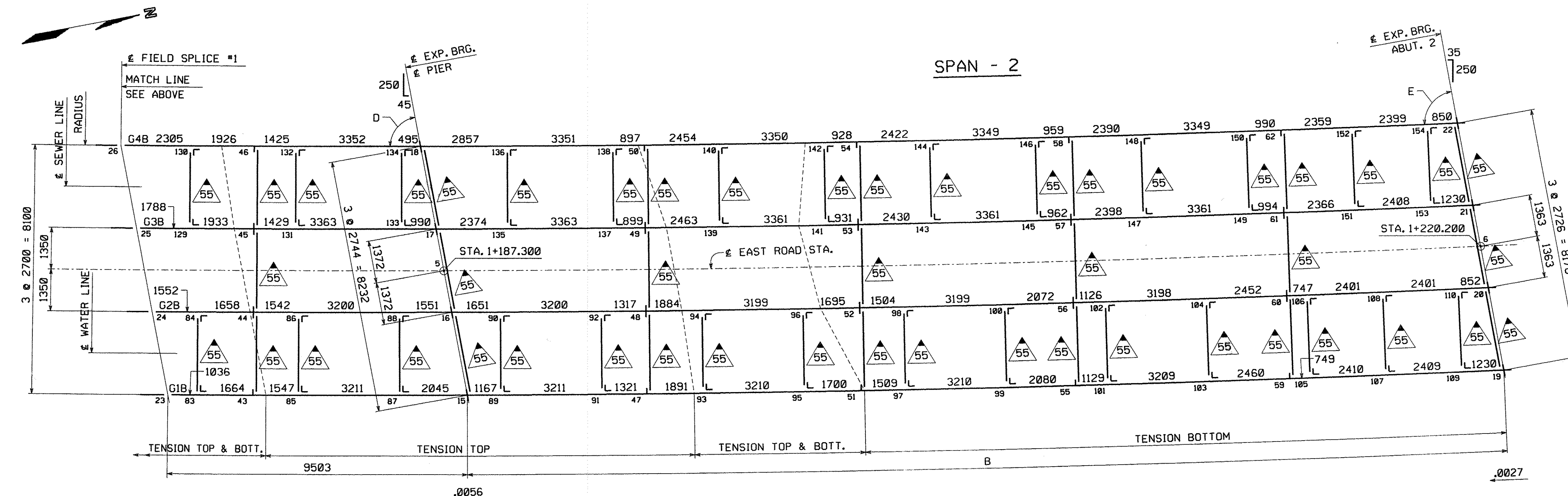
Scale = 0.012500 of full size.

SHIPMENT 01
PMSBNG 5002281L PFD 5002282 SHIPARECT-1 5002283

BY: MKF/edl
PLOTTED: 10/17/2007 9:24:35 AM



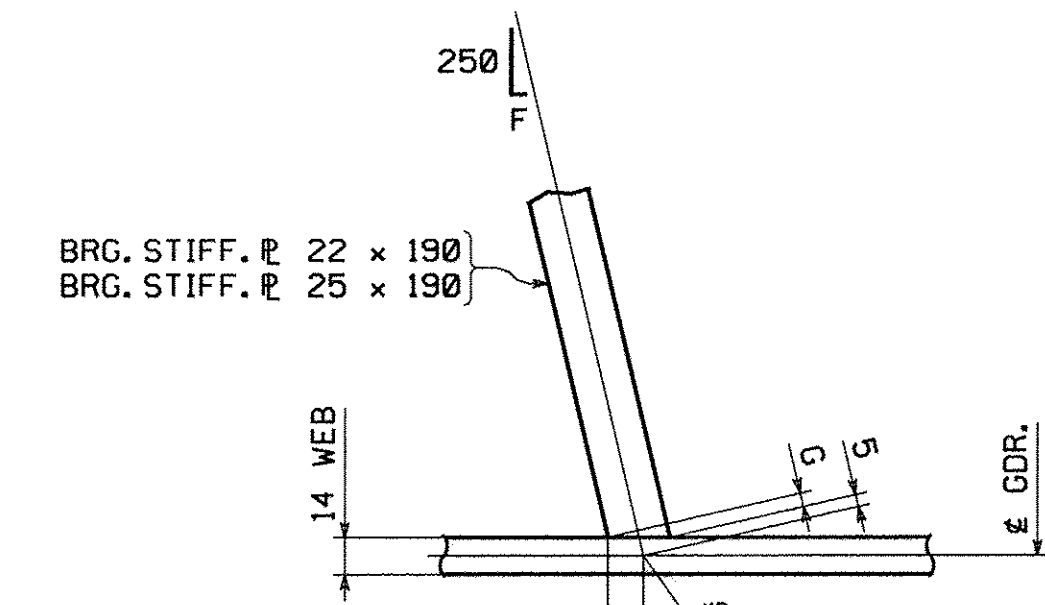
CALCULATION PLAN



CALCULATION PLAN

NOTES:

DIMENSIONS ON PLAN ALONG GIRDERS ARE GIVEN TO THE CHORD AT THE BOTTOM OF WEB IN FULLY CAMBERED POSITION. ALL OTHER DIMENSIONS ARE GIVEN HORIZONTALLY.
 DIMENSIONS PLACED ON THE GIRDER LINES REPRESENT CROSSFRAME OR UTILITY SUPPORT SPACING. DIMENSIONS FOR UTILITY SUPPORTS ARE GIVEN TO BACK OF ANGLE. FIGURES GIVEN THUS: .0083 ARE THE GRADES OF THE GIRDERS AT THE BEARINGS IN FINAL POSITION; ARROW POINTS DOWNGRADE.
 ALL STIFFENER AND CONNECTION PLATE SPACINGS ARE GIVEN TO ϵ PLATE. ENDS OF GIRDERS AND ALL BEARING STIFFENERS TO BE VERTICAL IN FINAL POSITION.
 ALL STEEL TO BE AASHTO M270M GRADE 345W (U.N.). ALL FIELD CONNECTIONS TO BE MADE WITH $\frac{7}{8}$ " H.S. (AASHTO M164 TYPE 3) BOLTS IN $\frac{1}{8}$ " HOLES (U.N.).
 FIGURES GIVEN THUS: .60 ARE THE DIFFERENCES IN ELEVATIONS OF GIRDERS (IN THE PLANE OF THE CROSSFRAME IN ERECTED POSITION) AT CROSSFRAMES; ARROW POINTS TOWARD LOW GIRDER.
 FOR TYPICAL DETAIL LAYOUTS, SEE DRAWINGS PREFIXED 'TD'. ALL STATIONS ARE GIVEN IN METERS.



SKEWED BRG. STIFF. LAYOUT

F	G	H
58	5	13
45	5	14
35	3	12

NO EXCEPTION TAKEN
 REVIEW BY STATISTIC IS FOR THE SOLE PURPOSE OF ASCERTAINING GENERAL CONFORMITY WITH DIMENSIONAL FABRICATION AND CONSTRUCTION METHODS. COORDINATION OF SUB TRADES, FINAL DESIGN OF COMPONENTS, AND ERRORS OR OMISSIONS ON SHOP DRAWINGS.
 DATE: 10/24/07
 SIGNATURE: [Signature]
 REVIEWED BY STATISTIC IS FOR THE SOLE PURPOSE OF ASCERTAINING GENERAL CONFORMITY WITH DIMENSIONAL FABRICATION AND CONSTRUCTION METHODS. COORDINATION OF SUB TRADES, FINAL DESIGN OF COMPONENTS, AND ERRORS OR OMISSIONS ON SHOP DRAWINGS.

-see comments on Drawings E1 & E2



NO.	REVISION	BY	CHK'D	DATE
Holes				
Bolts				
Coating				
Code(s)				
Scale				
N.T.S.				
General Contractor				
J.A. McDONALD, INC.				
HSS/PROJ. MGR				
DEB KUPRES				
Drawing Manager				
BRITIGAN (IH)				
MADE BY				
MGK				
CHK'D BY				
CS				
DATE				
9/13/07				
State				
VT				
Project Number				
S-1070147				
Struct. ID				
B				
Drawing Number				
WS1 OF WS1				

••NOTE••
 THE PURPOSE OF THIS DRAWING IS TO COORDINATE GEOMETRIC CONTROL INFORMATION. THIS DRAWING IS SUBMITTED FOR INFORMATION ONLY AND IS NOT INTENDED FOR SHOP FABRICATION. THIS DRAWING IS FOR REFERENCE ONLY, APPROVAL IS NOT REQUIRED.

LINE	RADIUS	A	B	C	D	E
G1	804.050'	29 380	32 895	76°-59'-47"	79°-46'-04"	82°-06'-43"
G2	801.350'	29 385	32 898	76°-57'-07"	79°-43'-59"	82°-05'-06"
G3	798.650'	29 391	32 901	76°-54'-25"	79°-41'-52"	82°-03'-30"
G4	795.950'	29 397	32 904	76°-51'-42"	79°-39'-45"	82°-01'-52"