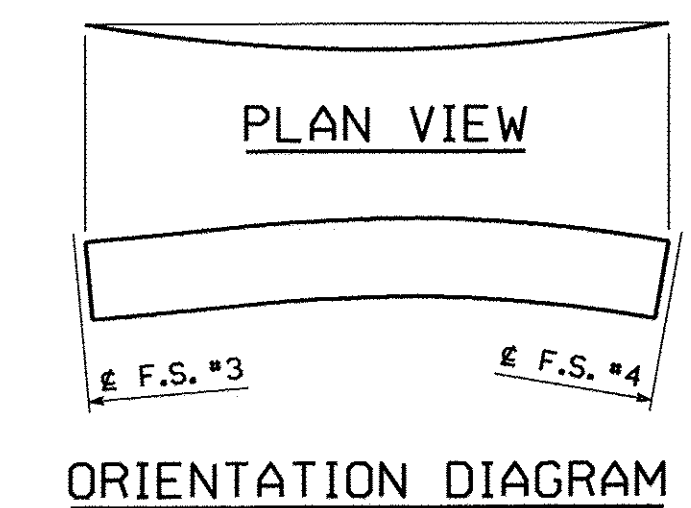
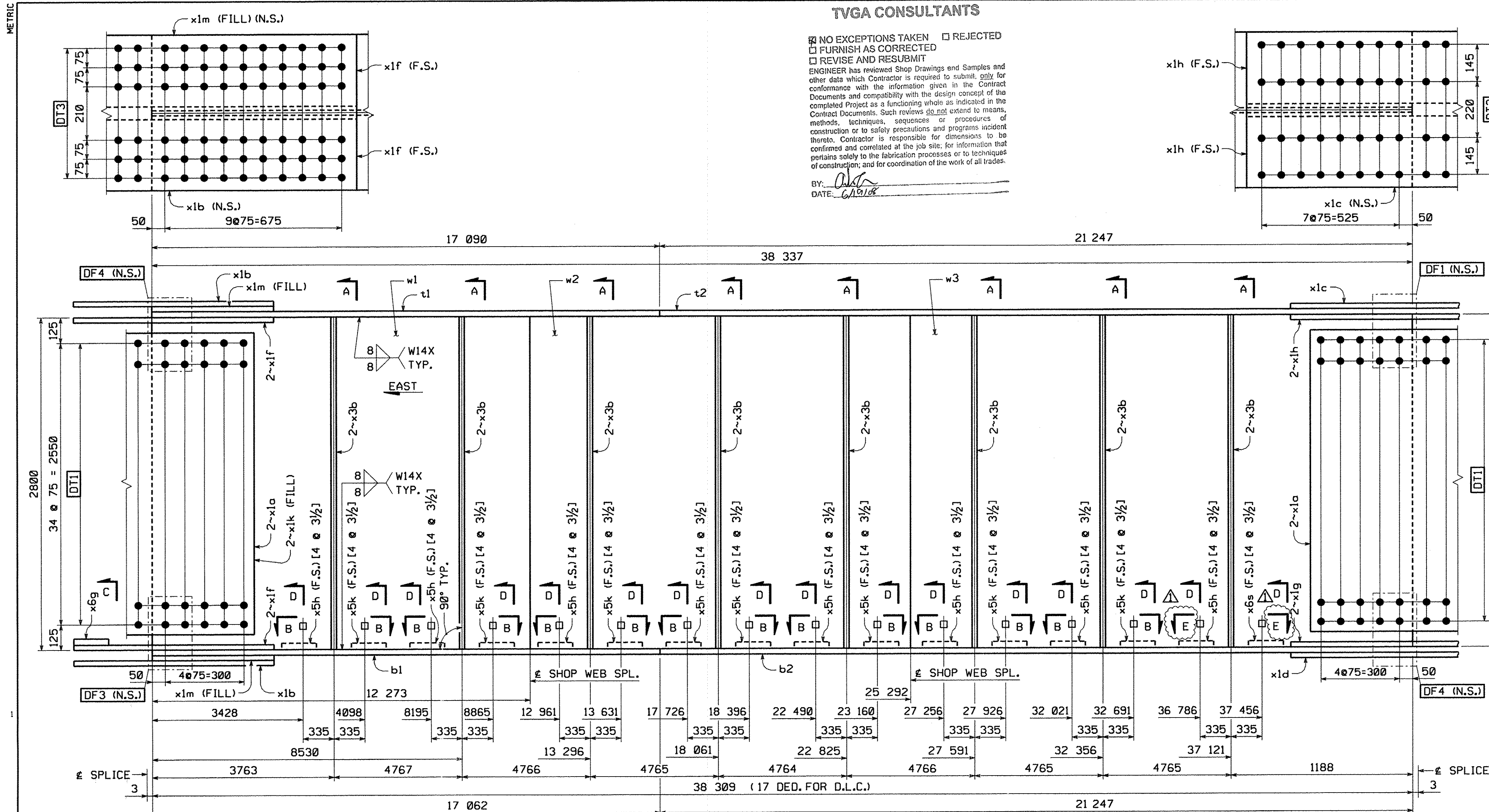


TVGA CONSULTANTS

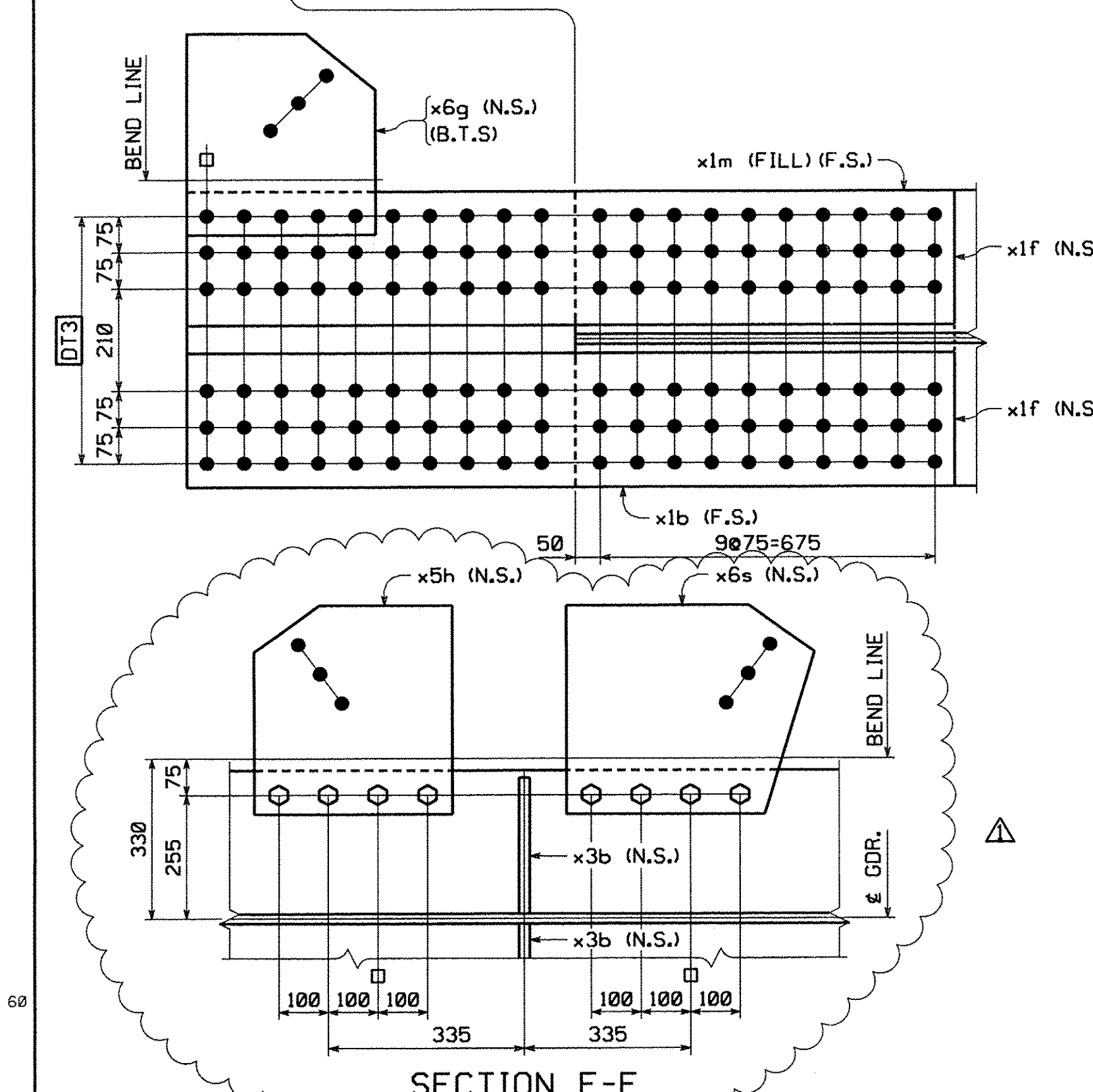
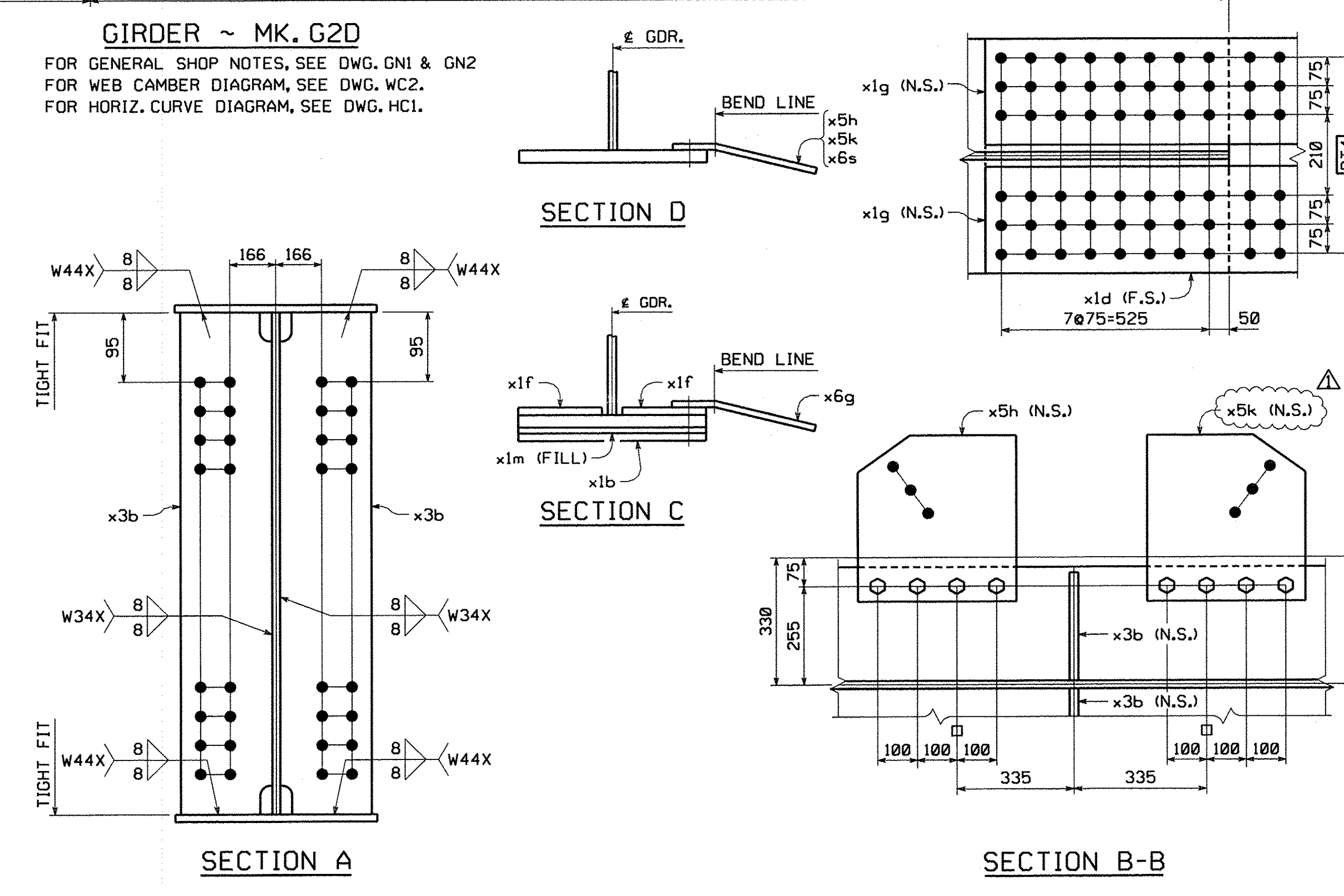
NO EXCEPTIONS TAKEN REJECTED
 FURNISH AS CORRECTED
 REVISE AND RESUBMIT
 ENGINEER has reviewed Shop Drawings and Samples and other data which Contractor is required to submit, only for performance with the information given in the Contract Documents and compliance with the design concept of the completed Project as a functioning whole as indicated in the Contract Documents. Such reviews do not extend to methods, techniques, sequences or procedures of construction or to safety precautions and programs incident thereto. Contractor is responsible for dimensions to be confirmed and correlated at the job site, for information that pertains solely to the fabrication processes or to techniques of construction, and for coordination of the work of all trades.

DATE: 6/21/08

| BILL OF MATERIAL | | | | | | | | | | | |
|---------------------------------|--------|----------|-------------|---------|-----------------|-------|---------------|---------|-------|----------------------|---------------|
| QTY EA | MARK | COMM | DESCRIPTION | LENGTH | SPEC | GRADE | TEST | REMARKS | ITEM | GROSS WT. EA | NET WT. EA |
| 1 | G2D | | GRIDER | | | | | | | 37194.59 | 6.84 37187.75 |
| 1 | w1 | PL | 22 x 2800 | 12 283 | M270M | 345W | T | | 06012 | 5938.85 | 2.44 5936.41 |
| 1 | w2 | PL | 22 x 2800 | 13 022 | M270M | 345W | T | | 06009 | 6296.16 | 0.00 6296.16 |
| 1 | w3 | PL | 22 x 2800 | 13 035 | M270M | 345W | T | | 06008 | 6302.44 | 4.40 6298.05 |
| 1 | t1 | PL | 40 x 610 | 17 090 | M270M | 345W | T | | 04002 | 3273.02 | 0.00 3273.02 |
| 1 | t2 | PL | 40 x 610 | 21 247 | M270M | 345W | T | | 04003 | 4069.16 | 0.00 4069.16 |
| 1 | t1 | PL | 40 x 610 | 17 062 | M270M | 345W | T | | 04002 | 3267.66 | 0.00 3267.66 |
| 1 | t2 | PL | 40 x 610 | 21 247 | M270M | 345W | T | | 04003 | 4069.16 | 0.00 4069.16 |
| 4 | x1a | PL | 15.9 x 2630 | 786 | M270M | 345W | T | | 06001 | 257.98 | 0.00 257.98 |
| 2 | x1b | PL | 20.6 x 610 | 1536 | M270M | 345W | T | | 06002 | 151.50 | 0.00 151.50 |
| 1 | x1c | PL | 20.6 x 610 | 1236 | M270M | 345W | T | | 06002 | 121.91 | 0.00 121.91 |
| 1 | x1d | PL | 20.6 x 610 | 1236 | M270M | 345W | T | | 06002 | 121.91 | 0.00 121.91 |
| 4 | x1f | PL | 20.6 x 280 | 1536 | M270M | 345W | T | | 06003 | 69.54 | 0.00 69.54 |
| 2 | x1g | PL | 20.6 x 280 | 1236 | M270M | 345W | T | | 06003 | 55.96 | 0.00 55.96 |
| 2 | x1h | PL | 20.6 x 280 | 1236 | M270M | 345W | T | | 06003 | 55.96 | 0.00 55.96 |
| 2 | x1k | SHT | 16GA x 380 | 2630 | AB06 Type 4 | | FILL | | 06004 | 16.10 | 0.00 16.10 |
| 2 | x1m | PL | 15.9 x 610 | 765 | M270M | 345W | FILL | | 06005 | 58.24 | 0.00 58.24 |
| 16 | x3b | PL | 14.3 x 280 | 2600 | M270M | 345W | T | | 07002 | 88.00 | 0.00 88.00 |
| 8 | x5h | PL | 14.3 x 420 | 423 | M270M | 345W | BENT | | 07003 | 19.94 | 0.00 19.94 |
| 7 | x5k | PL | 14.3 x 420 | 422 | M270M | 345W | BENT | | 07003 | 19.89 | 0.00 19.89 |
| 1 | x6g | PL | 14.3 x 380 | 417 | M270M | 345W | BENT (B.T.S.) | | 07003 | 17.79 | 0.00 17.79 |
| 1 | x6s | PL | 14.3 x 511 | 422 | M270M | 345W | BENT | | 07003 | 24.20 | 0.00 24.20 |
| 64 | 140308 | HS Bolt | 7/8 | 0-3 1/2 | M164 Type 3 | | | | 17002 | 0.00 | 0.00 0.00 |
| 64 | N14 | Nut | 7/8 | | M291 | DH3 | | | 17004 | 0.00 | 0.00 0.00 |
| 64 | W14 | Std Wash | 7/8 | | M293 Weathering | | | | 17006 | 0.00 | 0.00 0.00 |
| TOTAL WEIGHT THIS SHEET: | | | | | | | | | | 37 187.75 kgs | |
| BID ITEM 0160 506.56 | | | | | | | | | | | |



SHOP NOTE:
 [4 @ 3/2]
 INDICATES LENGTH OF 7/8" H.S. BOLTS
 INDICATES NUMBER OF 7/8" H.S. BOLTS



| | | | |
|-----------------------------------------------------------------------------------------------------------------------------------------------|----------------------------------|-----------------------------|----------------------------|
| ADDED SECT. E-E FOR GUSSET PLATE x6s | MGK | CS | 5/28/08 |
| NO. REVISION BY CHK'D DATE | | | |
| | | | |
| AS NOTED GIRDERS G2D | | | |
| COATING NONE VT ROUTE 279 OVER FURNACE BROOK VT ROUTE 279 STA. 8+542.000 TO STA. 8+685.000 TOWN OF BENNINGTON VERMONT, BRIDGE B12 | | | |
| CODE(S) 30 STATE OF VERMONT AGENCY OF TRANSPORTATION | | | |
| SCALE N.T.S. | | AC NH F019-1(53) | FED. AID PROJ. NO. |
| GENERAL CONTRACTOR J.A. McDONALD, INC. | | HSS PROJ. NO. DEB KUPRES | |
| SHPMT 3 | DRAWING MANAGER BRITIGAN (IH) | MADE BY JAW | CHK'D BY CS |
| STATE VT | HSS PROJECT NUMBER S-1070147 | HSS STRUCT. ID A | DRAWING NUMBER 20 OF 34 |

SHIPMENT 01
 PAKING: 50628127 PRO: 50628108 SHIP: 50628109
 BY: Mcdonald
 PLOTTED: 5/29/2008 10:07:16 AM