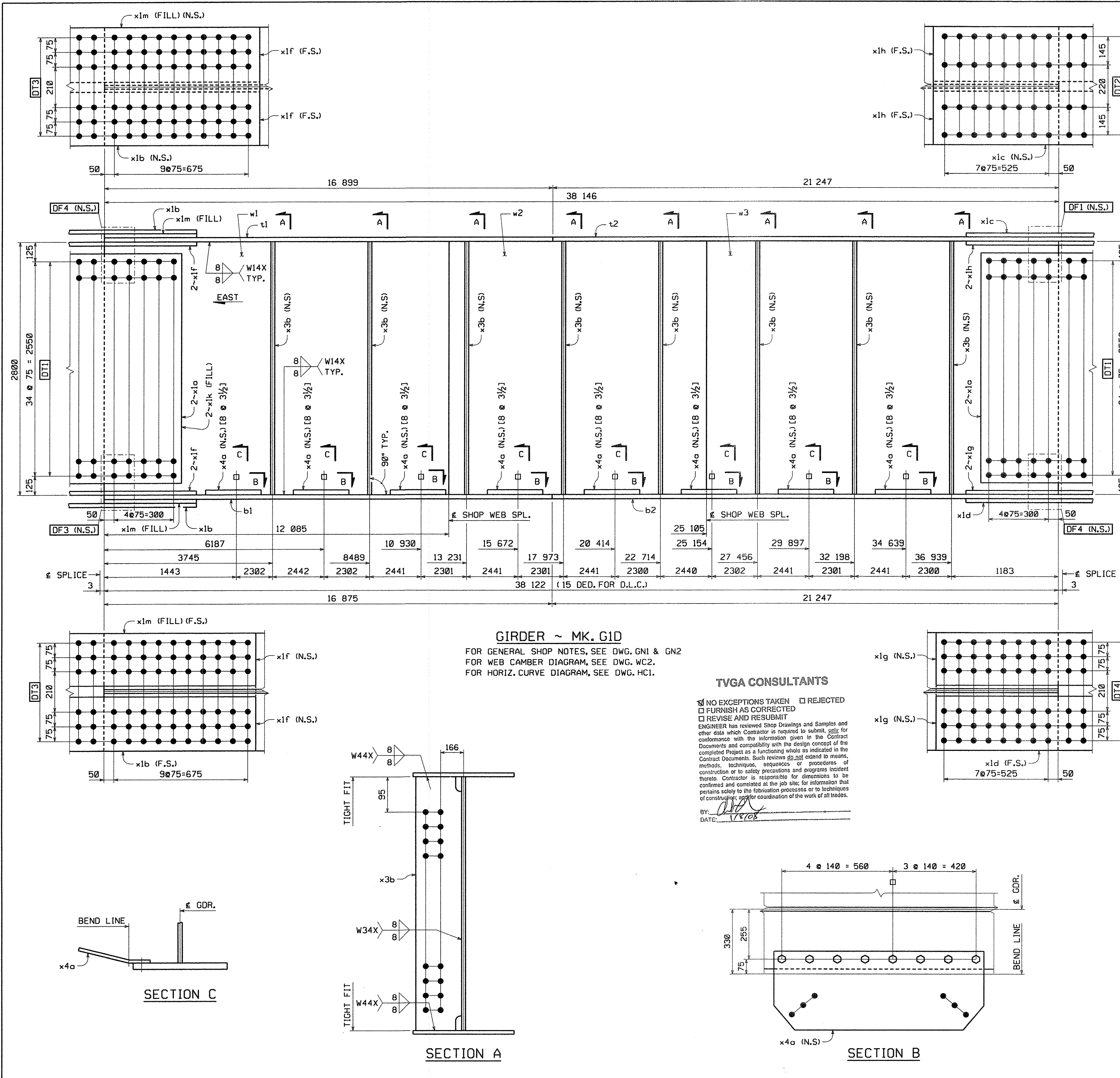


METRIC

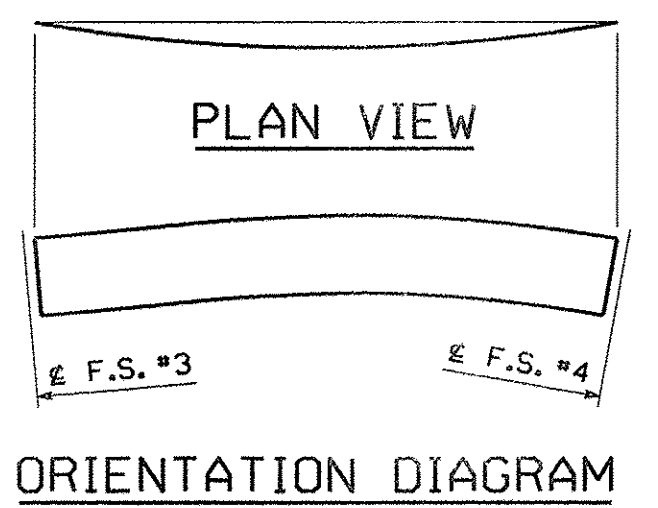


**GIRDER ~ MK. G1D**  
 FOR GENERAL SHOP NOTES, SEE DWG. GNI & GN2  
 FOR WEB CAMBER DIAGRAM, SEE DWG. WC2.  
 FOR HORIZ. CURVE DIAGRAM, SEE DWG. HC1.

**TVGA CONSULTANTS**  
 NO EXCEPTIONS TAKEN  REJECTED  
 FURNISH AS CORRECTED  
 REVISE AND RESUBMIT  
 ENGINEER has reviewed Shop Drawings and Samples and other data which Contractor is required to submit, only for conformance with the information given in the Contract Documents and compatibility with the design concept of the completed Project as a functioning whole as indicated in the Contract Documents. Such reviews do not extend to means, methods, techniques, sequences or procedures of construction or to safety precautions and programs incident thereto. Contractor is responsible for dimensions to be confirmed and controlled at the job site for information that pertains solely to the fabrication processes or to techniques of construction, and/or for coordination of the work of all trades.

BY: *[Signature]*  
 DATE: 11/19/07

BILL OF MATERIAL												
QTY EA.	MARK	COMM	DESCRIPTION	LENGTH	SPEC	GRADE	TEST	REMARKS	ITEM	QRCG WT. EA.	DED. WT. EA.	NET WT. EA.
1	G1D		GIRDER							36421.17	5.98	36415.19
1	w1	PL	22 x 2800	12.094	M270M	345V	T		03004	5847.47	2.05	5845.41
1	w2	PL	22 x 2800	13.022	M270M	345V	T		03009	6296.16	0.00	6296.16
1	w3	PL	22 x 2800	13.033	M270M	345V	T		03008	6301.47	3.93	6297.55
1	t1	PL	40 x 610	16.899	M270M	345V	T		04002	3236.44	0.00	3236.44
1	t2	PL	40 x 610	21.247	M270M	345V	T		04003	4069.16	0.00	4069.16
1	b1	PL	40 x 610	16.875	M270M	345V	T		04002	3231.85	0.00	3231.85
1	b2	PL	40 x 610	21.247	M270M	345V	T		04003	4069.16	0.00	4069.16
4	x1a	PL	15.9 x 2630	786	M270M	345V	T		06001	257.98	0.00	257.98
2	x1b	PL	20.6 x 610	1.536	M270M	345V	T		06002	151.50	0.00	151.50
1	x1c	PL	20.6 x 610	1.236	M270M	345V	T		06002	121.91	0.00	121.91
1	x1d	PL	20.6 x 610	1.236	M270M	345V	T		06002	121.91	0.00	121.91
4	x1f	PL	20.6 x 280	1.536	M270M	345V	T		06003	69.54	0.00	69.54
2	x1g	PL	20.6 x 280	1.236	M270M	345V	T		06003	55.96	0.00	55.96
2	x1h	PL	20.6 x 280	1.236	M270M	345V	T		06003	55.96	0.00	55.96
2	x1k	SHT	16GA x 360	2.630	A606 Type 4			FILL	06004	16.10	0.00	16.10
2	x1m	PL	15.9 x 610	765	M270M	345V	T	FILL	06005	58.24	0.00	58.24
8	x3b	PL	14.3 x 260	2.800	M270M	345V	T		07002	88.00	0.00	88.00
8	x4a	PL	14.3 x 1140	426	M270M	345V	T	BENT	07003	54.51	0.00	54.51
64	140308	HS Bolt	7/8	0-3 1/2	M164 Type 3				17002	0.00	0.00	0.00
64	N14	Nut	7/8		M281		DH3		17004	0.00	0.00	0.00
64	W14	Std Wash	7/8		M293 Weathering				17006	0.00	0.00	0.00
<b>TOTAL WEIGHT THIS SHEET:</b>										<b>36 415.19 kgs</b>		



**SHOP NOTE:**  
 TB @ 3/2"  
 INDICATES LENGTH OF 7/8" H.S. BOLTS  
 INDICATES NUMBER OF 7/8" H.S. BOLTS

NO.	REVISION	BY	CHK'D	DATE

HOLES	15/16"		
BOLTS			
AS NOTED	GIRDER G1D		
COATING	VT ROUTE 279 OVER FURNACE BROOK		
NONE	VT ROUTE 279 STA. B+542.000 TO STA. B+685.000		
CODE(S)	TOWN OF BENNINGTON VERMONT, BRIDGE B12		
30	STATE OF VERMONT		
	AGENCY OF TRANSPORTATION		
SCALE	AC NH F019-1(53)	FED. AID PROJ. NO.	
N.T.S.			
GENERAL CONTRACTOR	J.A. McDONALD, INC.	HSSI PROJ. MGR	DEB KUPRES
SHPMT	3	DRAWING MANAGER	BRITIGAN (IH)
STATE	VT	HSSI PROJECT NUMBER	S-1070147
		MADE BY	JAW
		CHK'D BY	CS
		DATE	11/27/07
		HSSI STRUCT. ID	A
		DRAWING NUMBER	19 OF 34

SHIPMENT 01  
 PMS/ENG 500261Z PRD 500261B SHIP/RECT 500261C  
 BH: MK/rel/oh  
 PLOTTED: 11/29/07 09:07  
 12:28:02 PM