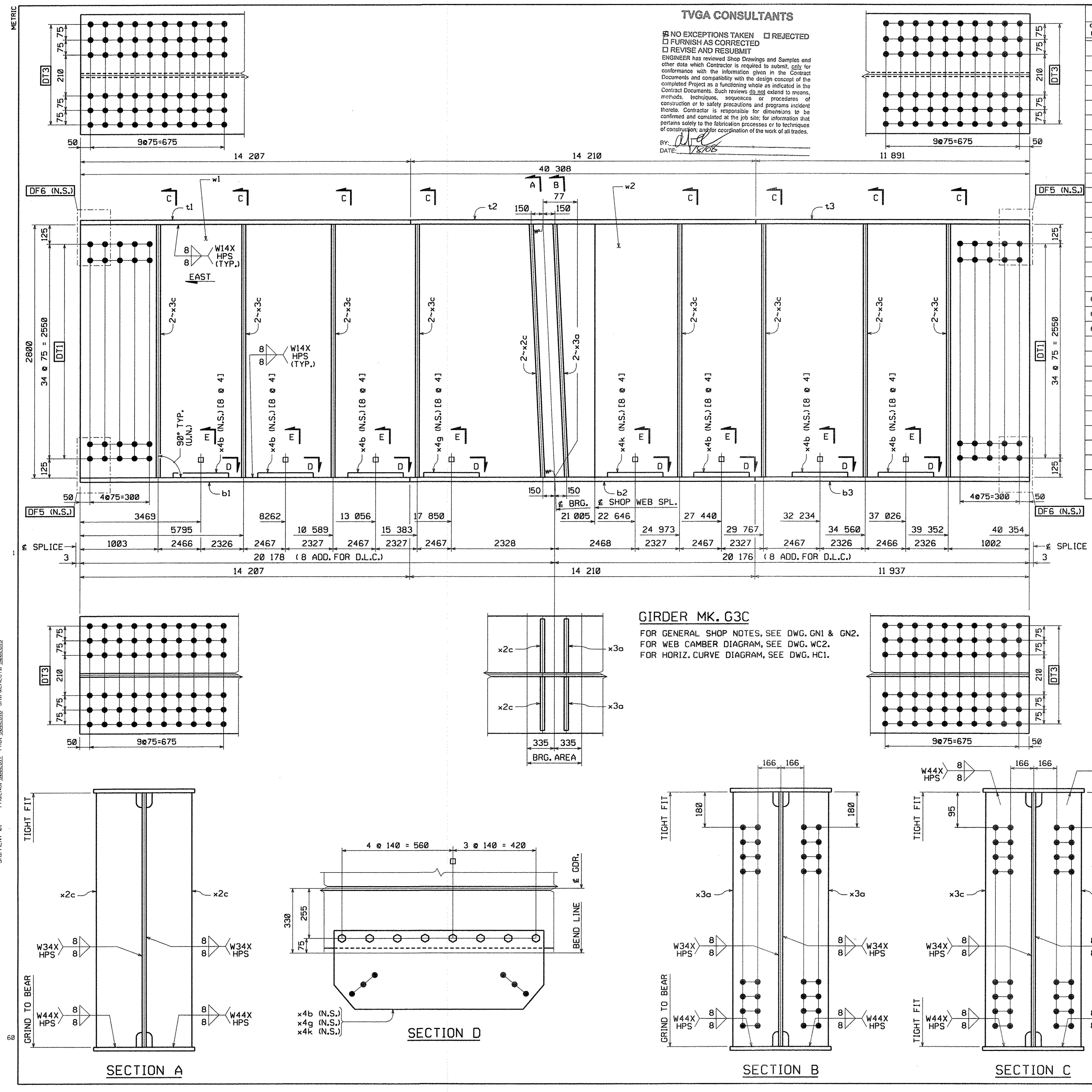


TVGA CONSULTANTS

NO EXCEPTIONS TAKEN
 □ FURNISH AS CORRECTED
 □ REVISE AND RESUBMIT

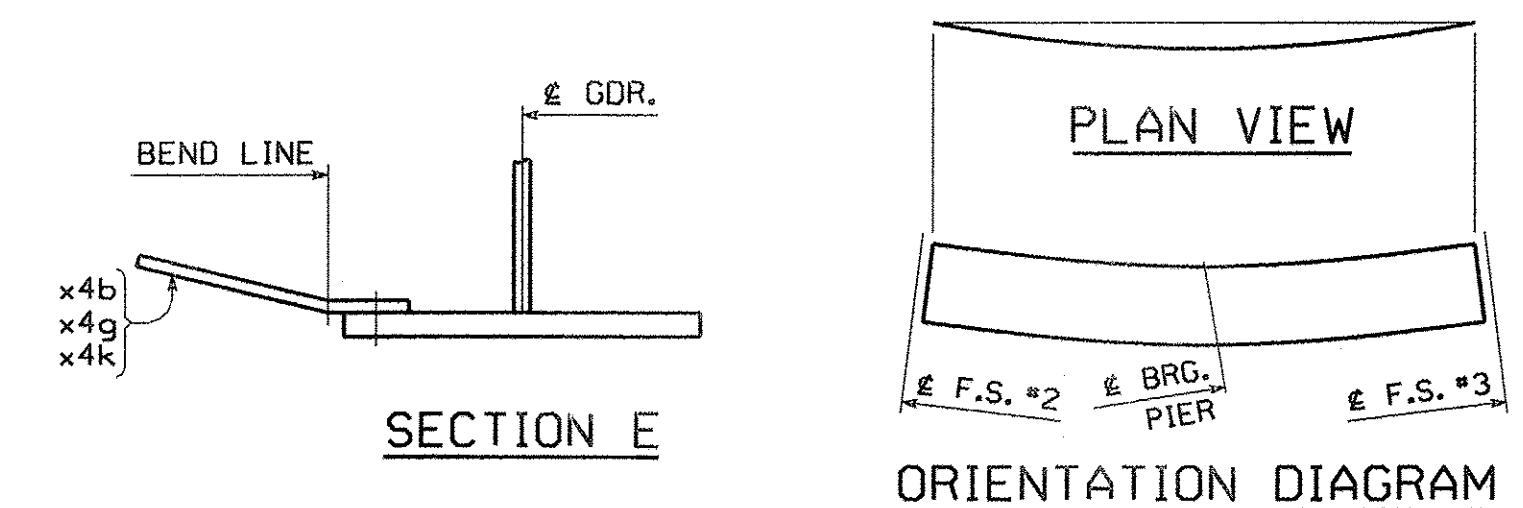
ENGINEER has reviewed Shop Drawings and Samples and other data which Contractor is required to submit, only for conformance with the information given in the Contract Documents and compatibility with the design concept of the completed Project as a functioning whole as indicated in the Contract Documents. Such reviews do not extend to means, methods, techniques, sequences or procedures of construction or to safety precautions and programs incident thereto. Contractor is responsible for dimensions to be confirmed and correlated at the job site; for information that pertains solely to the fabrication processes or to techniques of construction, and/or coordination of the work of all trades.

BY: *[Signature]*
 DATE: 11/26/07



GIRDER MK. G3C
 FOR GENERAL SHOP NOTES, SEE DWG. GNI & GN2.
 FOR WEB CAMBER DIAGRAM, SEE DWG. WC2.
 FOR HORIZ. CURVE DIAGRAM, SEE DWG. HC1.

BILL OF MATERIAL												
QTY	MARK	COMM	DESCRIPTION	LENGTH	SPEC	GRADE	TEST	REMARKS	ITEM	GRGS WT. EA.	DED. WEIGHT	NET WT. EA.
1	G3C		GIRDER							46826.82	170.58	46756.24
1	w1	PL	26 x 2800	21 005	M270M	HPS485W	T		03013	12002.48	6.57	11995.91
1	w2	PL	26 x 2800	19 349	M270M	HPS485W	T		03017	11056.23	6.57	11049.66
1	t1	PL	55 x 610	14 207	M270M	HPS485W	T		04011	3741.21	0.00	3741.21
1	t2	PL	55 x 610	14 210	M270M	HPS485W	T		04011	3742.00	0.00	3742.00
1	t3	PL	55 x 610	11 892	M270M	HPS485W	T		04010	3131.59	0.00	3131.59
1	b1	PL	55 x 610	14 207	M270M	HPS485W	T		04011	3741.21	0.00	3741.21
1	b2	PL	55 x 610	14 210	M270M	HPS485W	T		04011	3742.00	0.00	3742.00
1	b3	PL	55 x 610	11 938	M270M	HPS485W	T		04010	3143.70	0.00	3143.70
2	x2c	PL	25.4 x 280	2 801	M270M	345W	T		07001	156.36	0.00	156.36
2	x3a	PL	25.4 x 280	2 801	M270M	345W	T		07001	156.36	0.00	156.36
16	x3c	PL	15.9 x 280	2 800	M270M	345W	T		07006	97.84	9.84	88.00
6	x4b	PL	14.3 x 1140	425	M270M	345W	BENT		07003	54.38	0.00	54.38
1	x4g	PL	14.3 x 1140	435	M270M	345W	BENT		07003	55.66	0.00	55.66
1	x4k	PL	14.3 x 1140	434	M270M	345W	BENT		07003	55.53	0.00	55.53
64	140400	HS Bolt	7/8		0-4	M164 Type 3			17001	0.00	0.00	0.00
64	N14	Nut	7/8			M291	DH3		17004	0.00	0.00	0.00
64	W14	Std Wash	7/8			M293 Weathering			17006	0.00	0.00	0.00
WEIGHT FOR BID ITEM# 0990 900.635										44 287.28 kgs		
WEIGHT FOR BID ITEM# 0160 506.56										2 470.96 kgs		
TOTAL WEIGHT THIS SHEET:										46 758.24 kgs		



SHOP NOTE:
 (8 @ 4)
 INDICATES LENGTH OF 7/8" H.S. BOLTS
 INDICATES NUMBER OF 7/8" H.S. BOLTS

NO.	REVISION	BY	CHK'D	DATE
GIRDER G3C				
VT ROUTE 279 OVER FURNACE BROOK VT ROUTE 279 STA. 8+542.000 TO STA. 8+685.000 TOWN OF BENNINGTON VERMONT, BRIDGE B12 STATE OF VERMONT AGENCY OF TRANSPORTATION				
SCALE: N.T.S.		AC NH F019-1(53)		FED. AID PROJ. NO.
GENERAL CONTRACTOR: J.A. McDONALD, INC.		HSSI PROJ. MGR: DEB KUPRES		
SHPMT: 3	DRAWING MANAGER: BRITIGAN (IH)	MADE BY: MAF	CHK'D BY: WBW	DATE: 11/26/07
STATE: VT	HSSI PROJECT NUMBER: S-1070147	HSSI STRUCT. ID: A	DRAWING NUMBER: 15	OF 34

SHIPMENT 01
 PAKING: 5002817 PRO: 5002818 SHIPPERECT: 5002819
 BY: MK-revel
 PLOTTED: 11/28/2007 1:26:47 PM