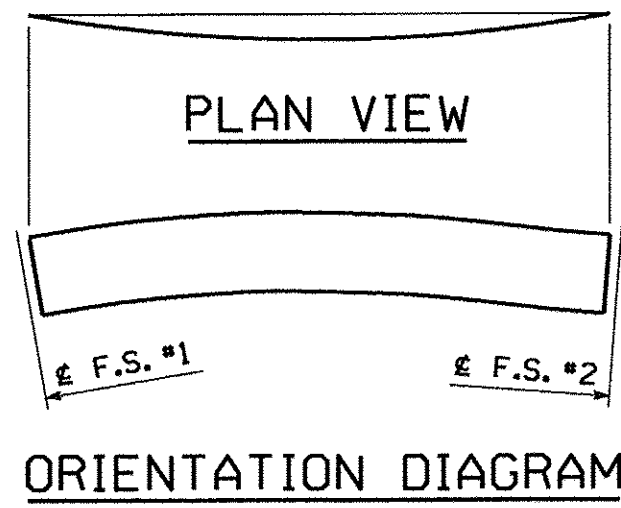
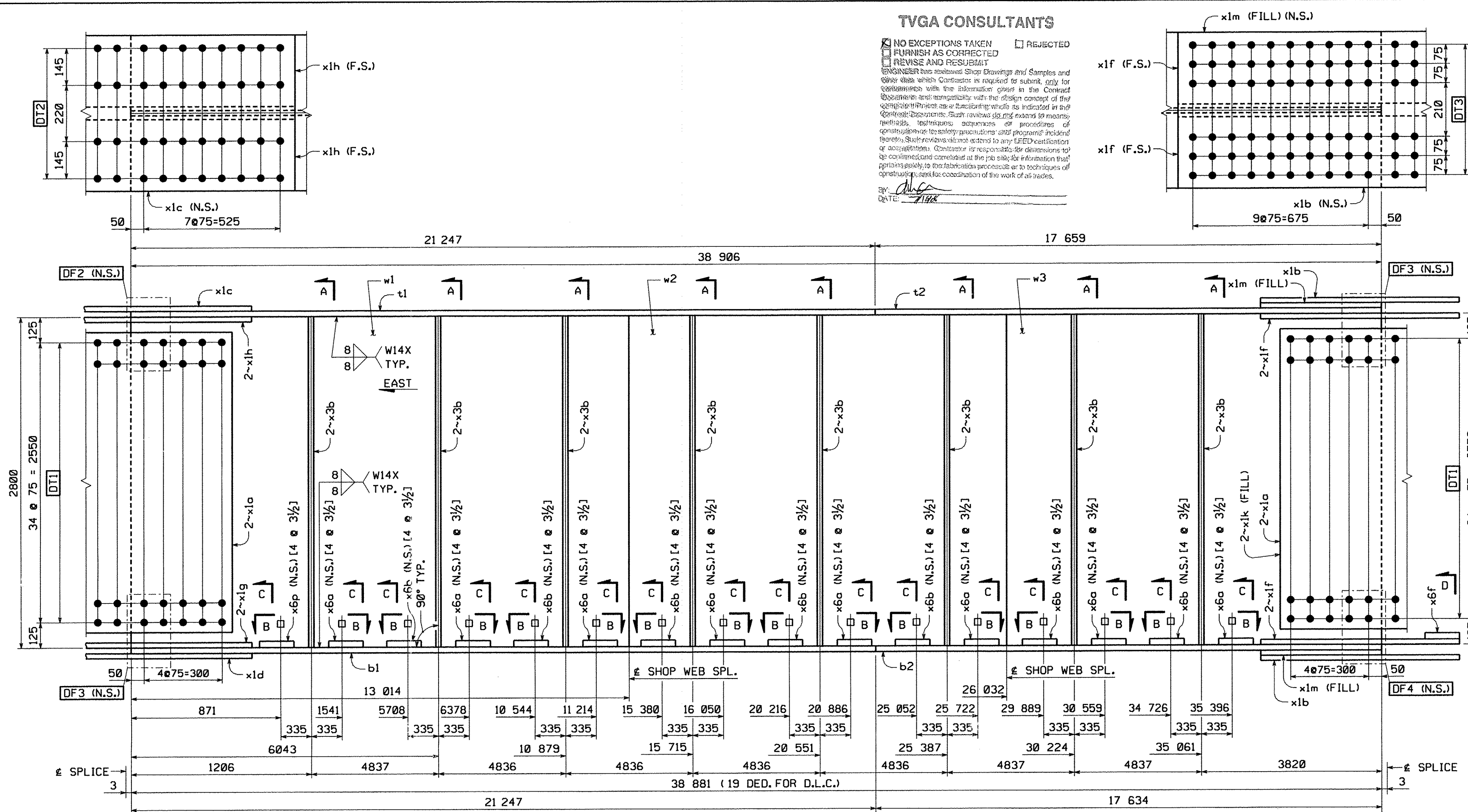


TVGA CONSULTANTS

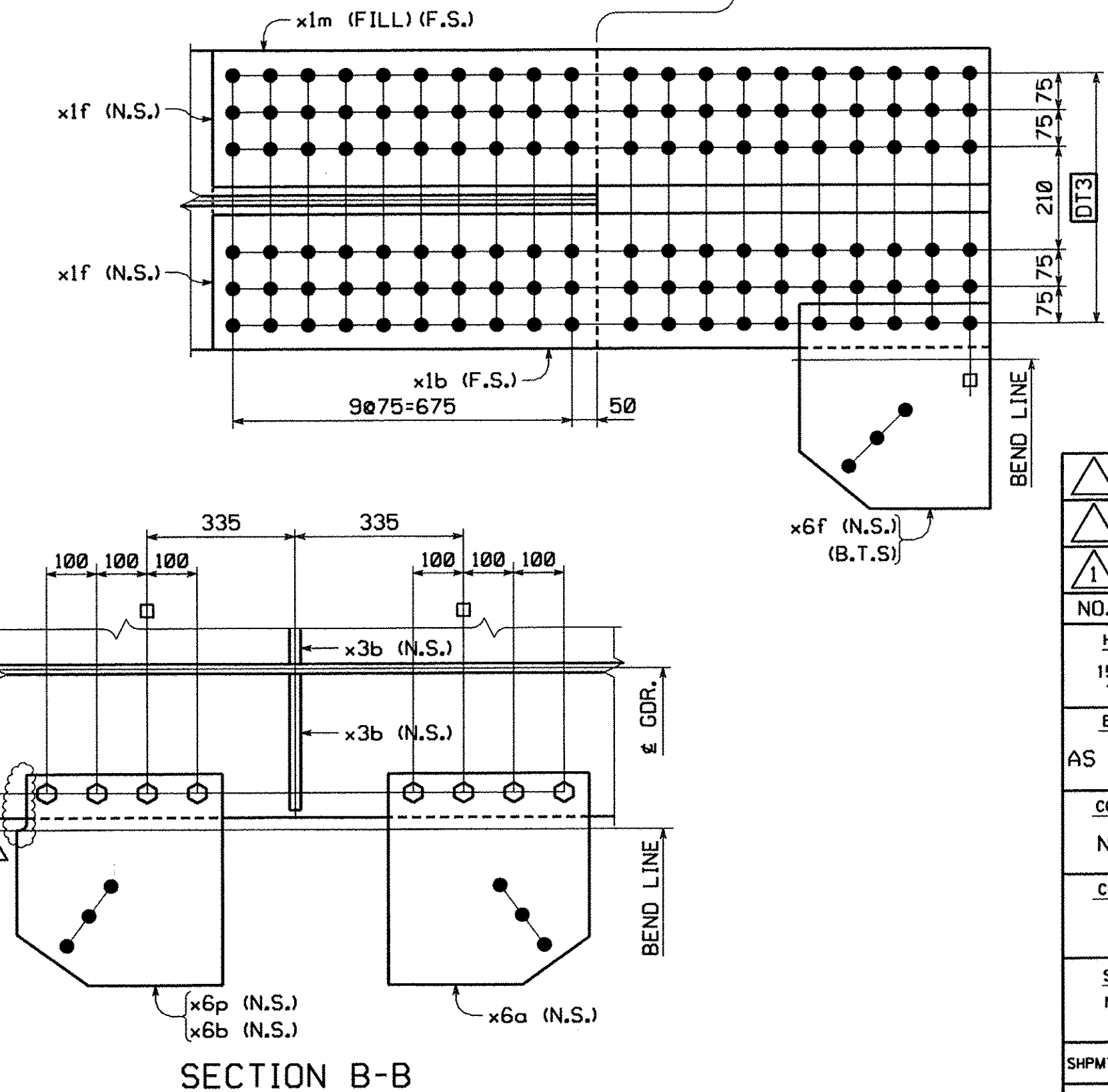
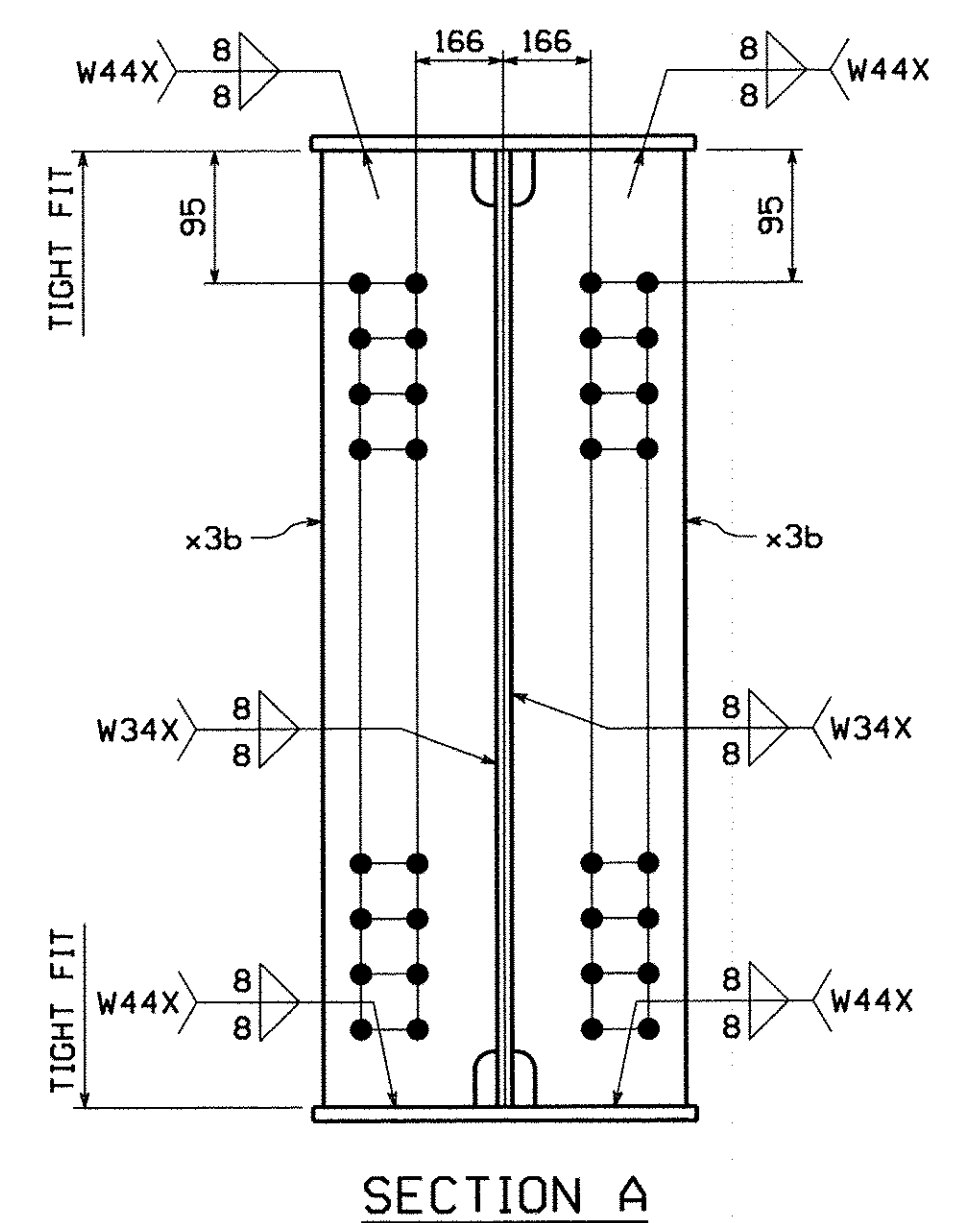
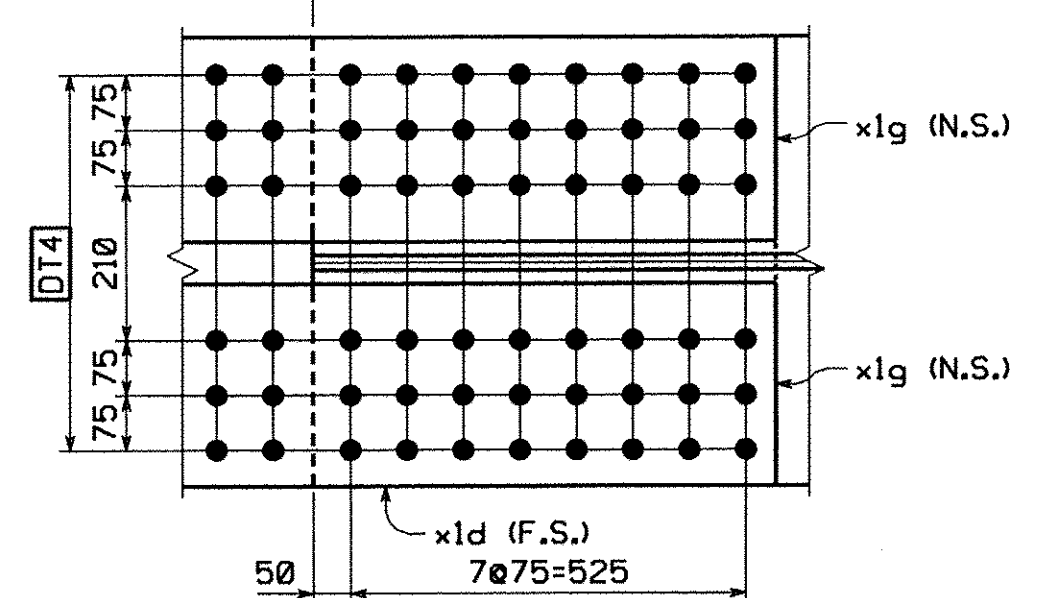
NO EXCEPTIONS TAKEN
 FURNISH AS CORRECTED
 REVISE AND RESUBMIT
 ENGINEER has reviewed Shop Drawings and Samples and other data which Contractor is required to submit, only for conformance with the information given in the Contract Documents and necessarily with the design concept of the architect. Engineer is not responsible for the accuracy of quantities shown on drawings or for the construction of the work. Contractor is responsible for the accuracy of quantities shown on drawings and for the construction of the work. Engineer is not responsible for the accuracy of quantities shown on drawings or for the construction of the work. Contractor is responsible for the accuracy of quantities shown on drawings and for the construction of the work.

DATE: 7/1/08

BILL OF MATERIAL												
QTY EA	MARK	COMM	DESCRIPTION	LENGTH	SPEC	GRADE	TEST	REMARKS	ITEM	GROSS WT. EA	NET WT. EA	
1	G5B		GIRDER							37680.97	6.00	37674.98
1	w1	PL	22 x 2800	13 030	M270M	345W	T		03008	6300.02	3.72	6296.30
1	w2	PL	22 x 2800	13 019	M270M	345W	T		03009	6294.71	0.00	6294.71
1	w3	PL	22 x 2800	12 838	M270M	345W	T		03011	6216.86	2.28	6214.58
1	t1	PL	40 x 610	21 247	M270M	345W	T		04003	4089.16	0.00	4089.16
1	t2	PL	40 x 610	17 659	M270M	345W	T		04001	3382.00	0.00	3382.00
1	b1	PL	40 x 610	21 247	M270M	345W	T		04003	4089.16	0.00	4089.16
1	b2	PL	40 x 610	17 634	M270M	345W	T		04001	3377.21	0.00	3377.21
4	x1a	PL	15.9 x 2630	786	M270M	345W	T		06001	257.98	0.00	257.98
2	x1b	PL	20.6 x 610	1 536	M270M	345W	T		06002	151.50	0.00	151.50
1	x1c	PL	20.6 x 610	1 236	M270M	345W	T		06002	121.91	0.00	121.91
1	x1d	PL	20.6 x 610	1 236	M270M	345W	T		06002	121.91	0.00	121.91
4	x1f	PL	20.6 x 280	1 536	M270M	345W	T		06003	69.54	0.00	69.54
2	x1g	PL	20.6 x 280	1 236	M270M	345W	T		06003	56.96	0.00	56.96
2	x1h	PL	20.6 x 280	1 236	M270M	345W	T		06003	56.96	0.00	56.96
2	x1k	SHT	16GA x 330	2 630	A606 Type 4			FILL	06004	16.10	0.00	16.10
2	x1m	PL	15.9 x 610	765	M270M	345W	T	FILL	06005	58.24	0.00	58.24
16	x3b	PL	14.3 x 280	2 800	M270M	345W	T		07002	88.00	0.00	88.00
8	x6a	PL	14.3 x 420	420	M270M	345W	T	BENT	07003	19.80	0.00	19.80
7	x6b	PL	14.3 x 420	420	M270M	345W	T	BENT	07003	19.80	0.00	19.80
1	x6f	PL	14.3 x 380	415	M270M	345W	T	BENT (B.T.S.)	07003	17.70	0.00	17.70
1	x6p	PL	14.3 x 420	420	M270M	345W	T	BENT	07003	19.80	0.00	19.80
64	140308	HS Bolt	7/8	0-3 1/2	M164 Type 3				17002	0.00	0.00	0.00
64	N14	NUT	7/8		M291		DH3		17004	0.00	0.00	0.00
64	W14	Std Wash	7/8		M293 Weathering				17006	0.00	0.00	0.00
TOTAL WEIGHT THIS SHEET:										37 674.98 kgs		



GIRDER ~ MK. G5B
 FOR GENERAL SHOP NOTES, SEE DWG. G01 & G02
 FOR WEB CAMBER DIAGRAM, SEE DWG. WC1.
 FOR HORIZ. CURVE DIAGRAM, SEE DWG. HC1.



NO.	REVISION	BY	CHK'D	DATE
	REVISED GUSSET PLATE x6p DUE TO FOULING OF SPLICE PLATE	MGK	CS	5/28/08
AS NOTED GIRDER G5B				
COATING: VT ROUTE 279 OVER FURNACE BROOK NONE: VT ROUTE 279 STA. 8+542.000 TO STA. 8+685.000 CODE(S): TOWN OF BENNINGTON VERMONT, BRIDGE B12 30: STATE OF VERMONT AGENCY OF TRANSPORTATION				
SCALE: N.T.S.		GENERAL CONTRACTOR: J.A. McDONALD, INC.		
SHPMT: 3		HSSI PROJ. MGR: DEB KUPRES		
STATE: VT		DRAWING NUMBER: 11 OF 34		

RECEIVED
 JUL 18 2008