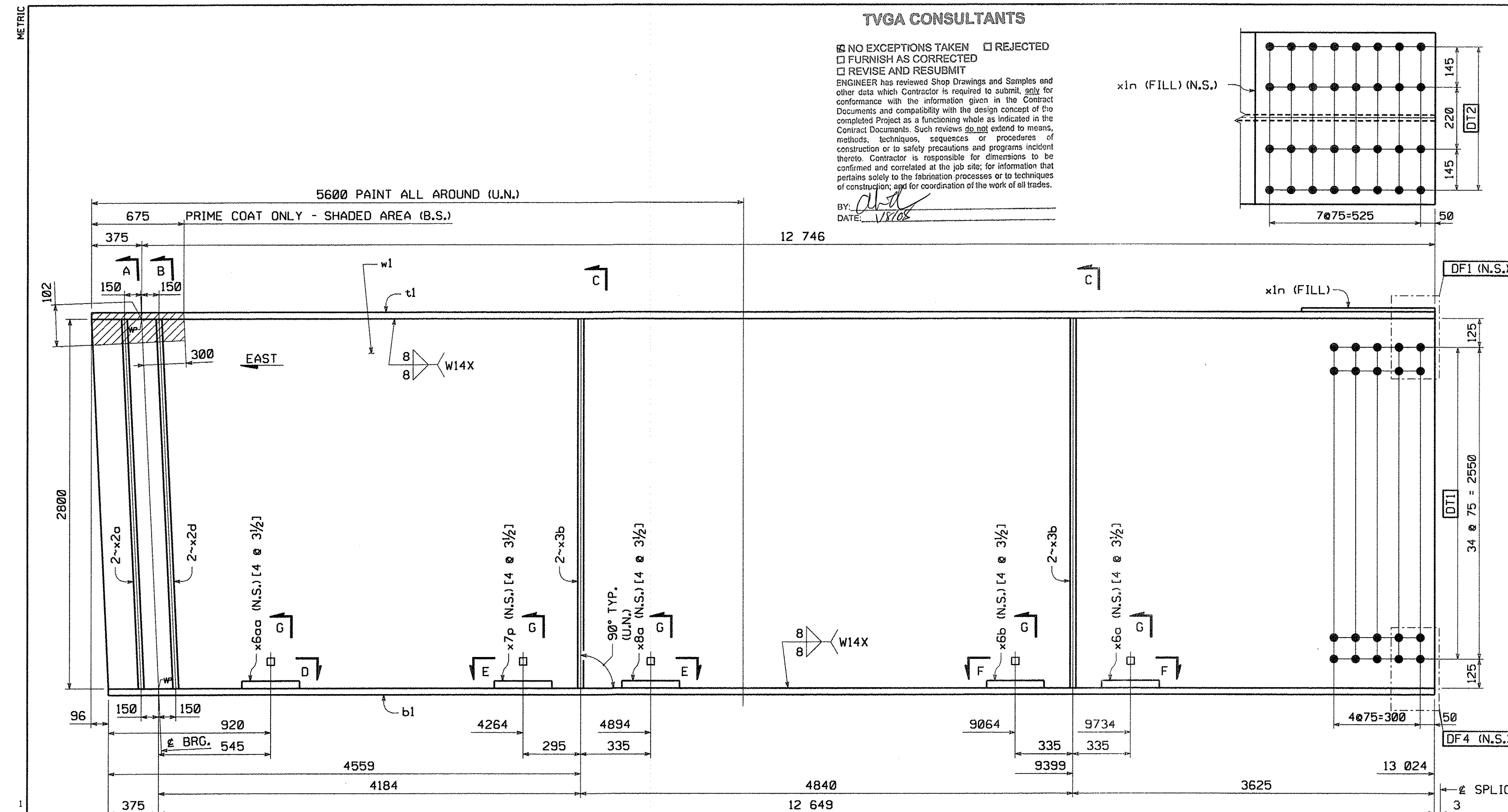


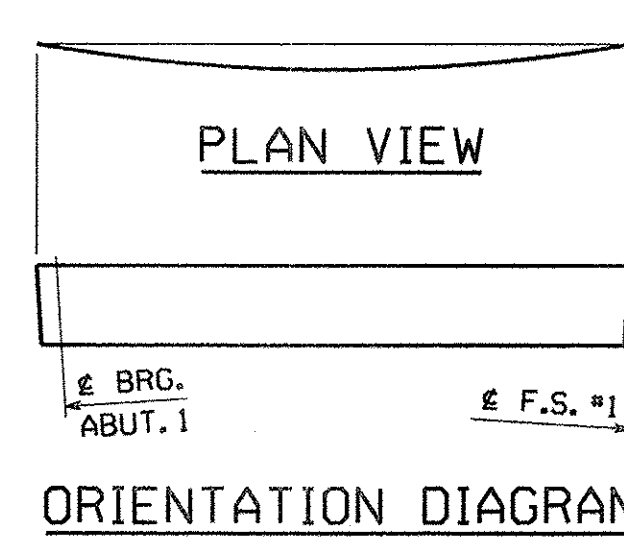
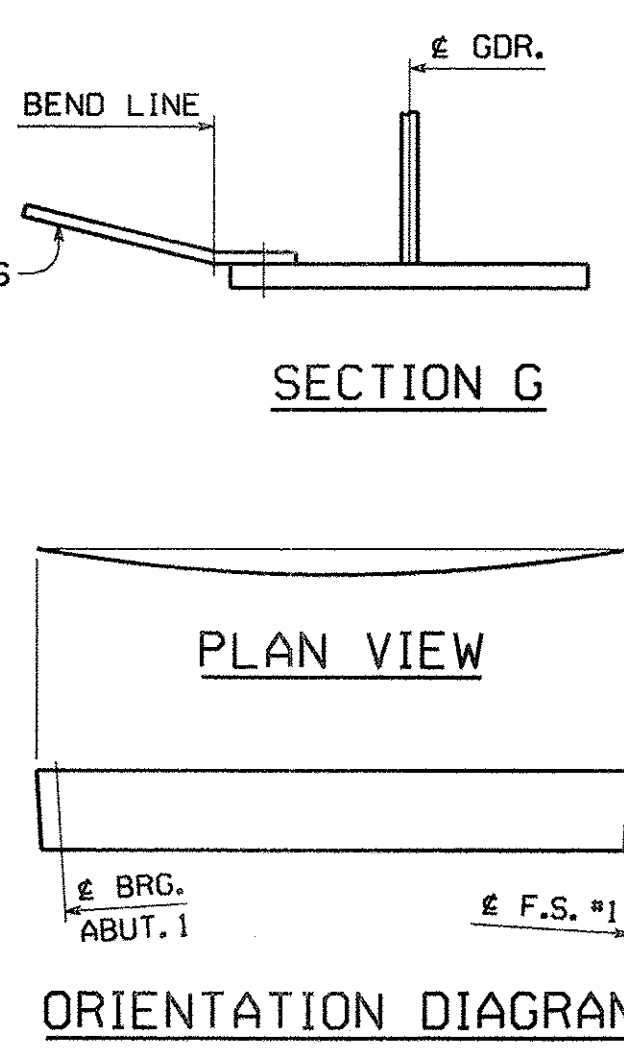
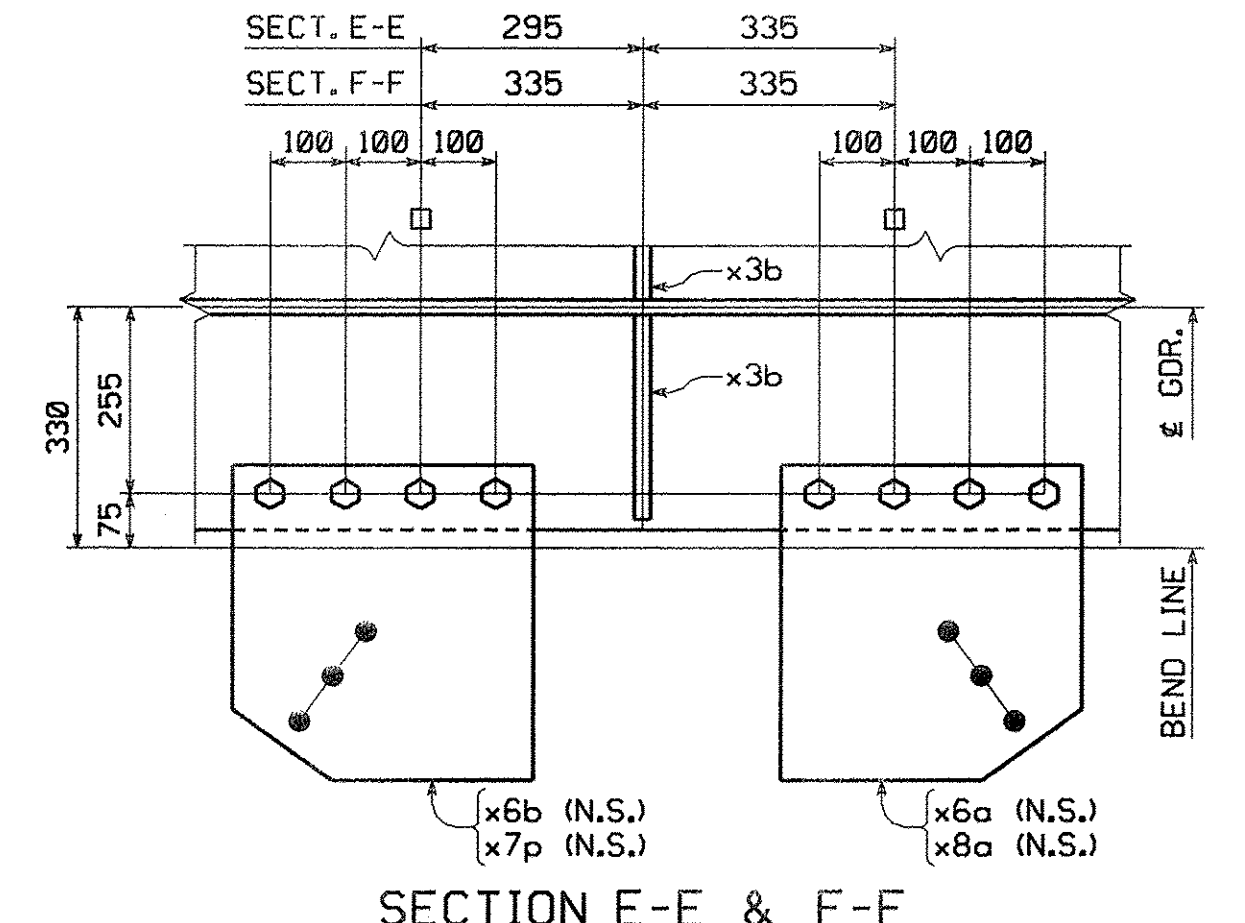
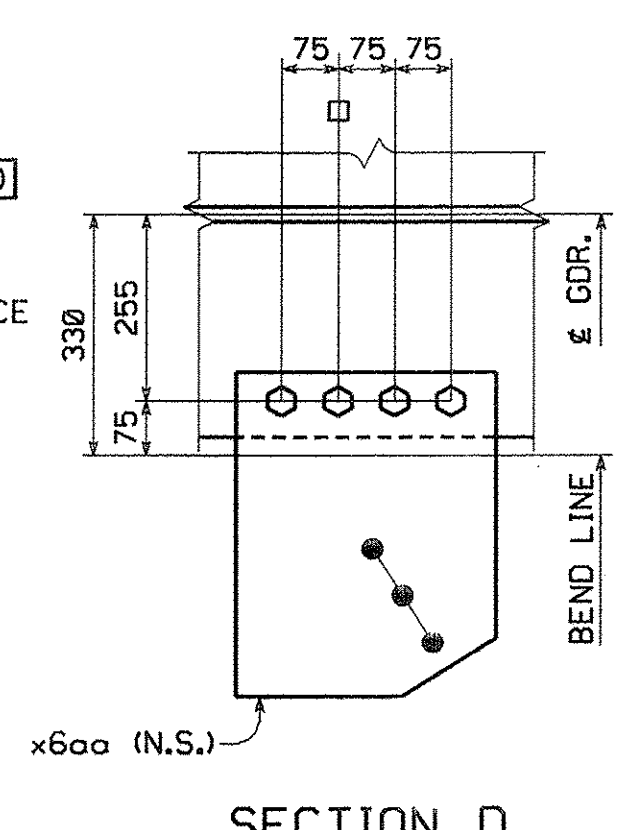
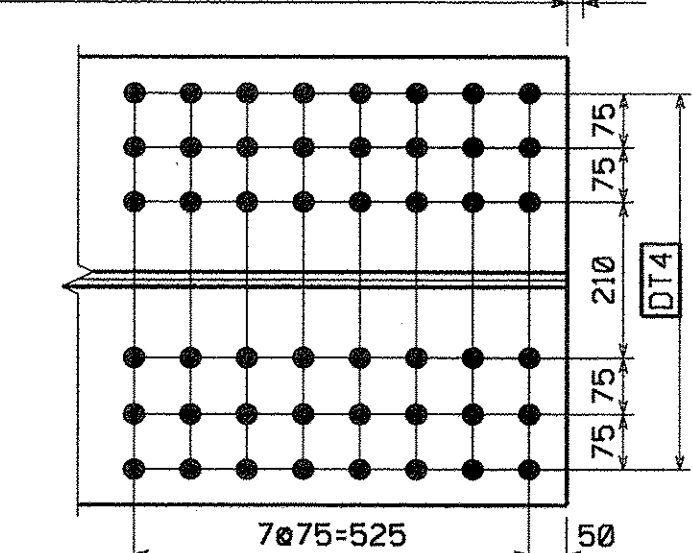
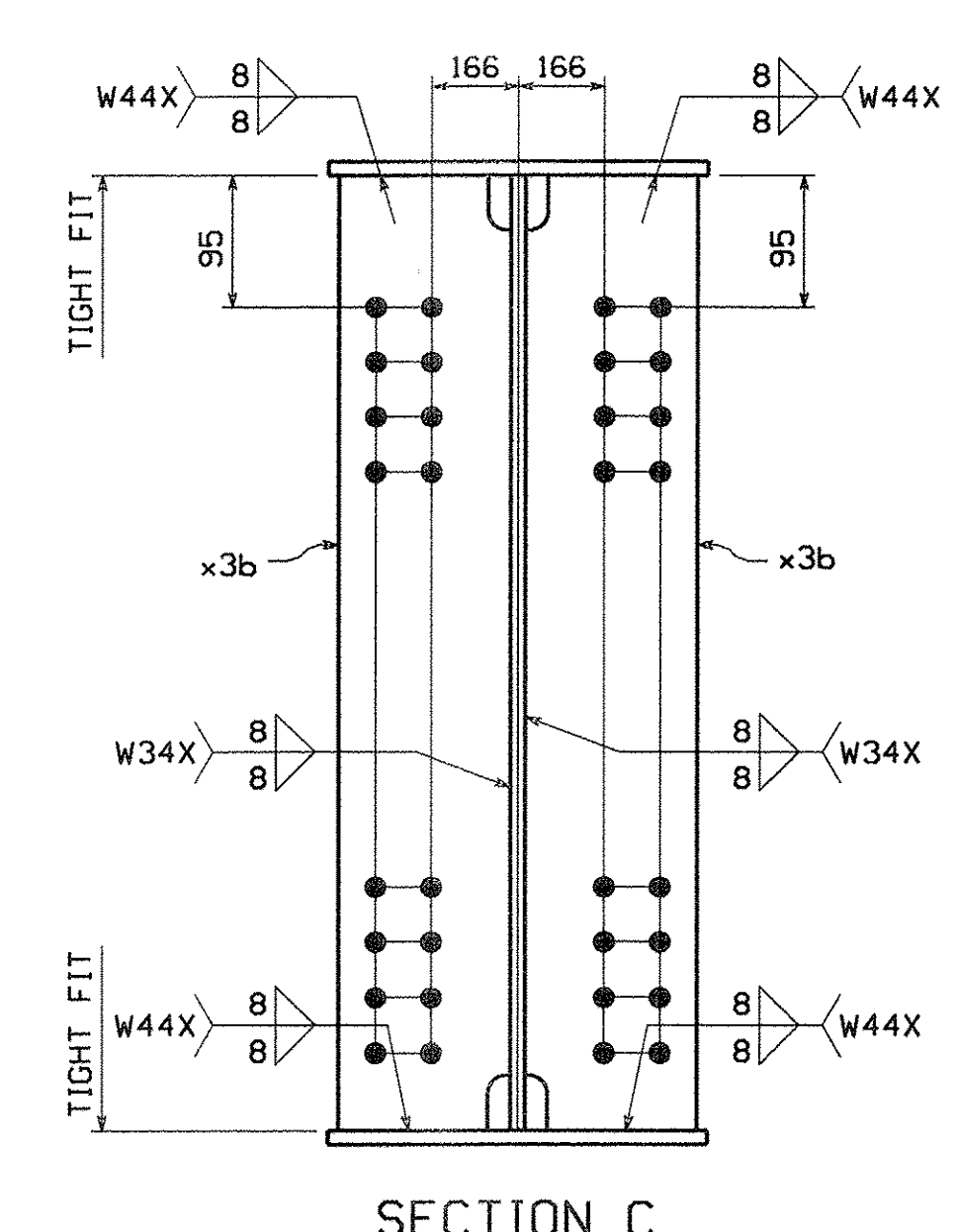
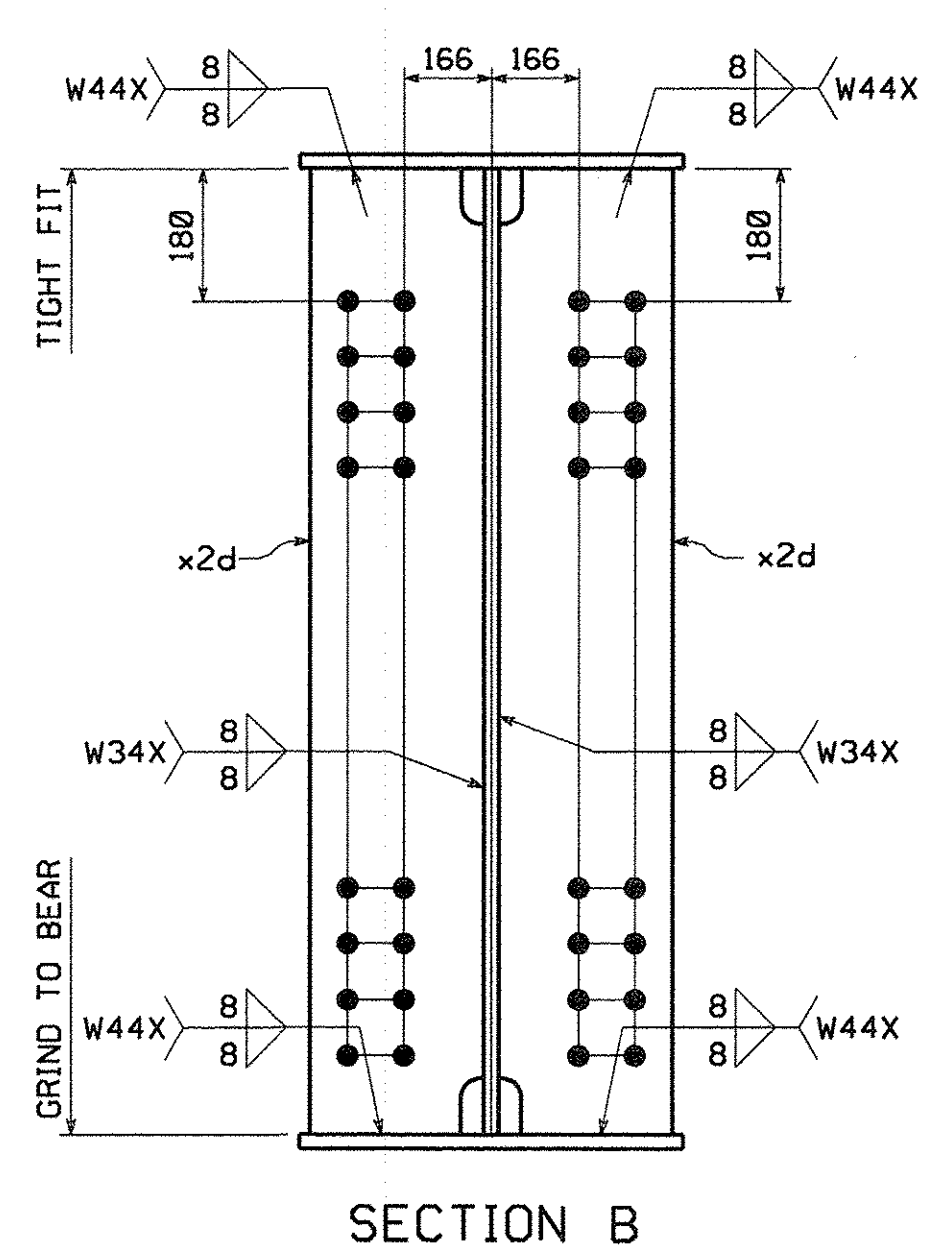
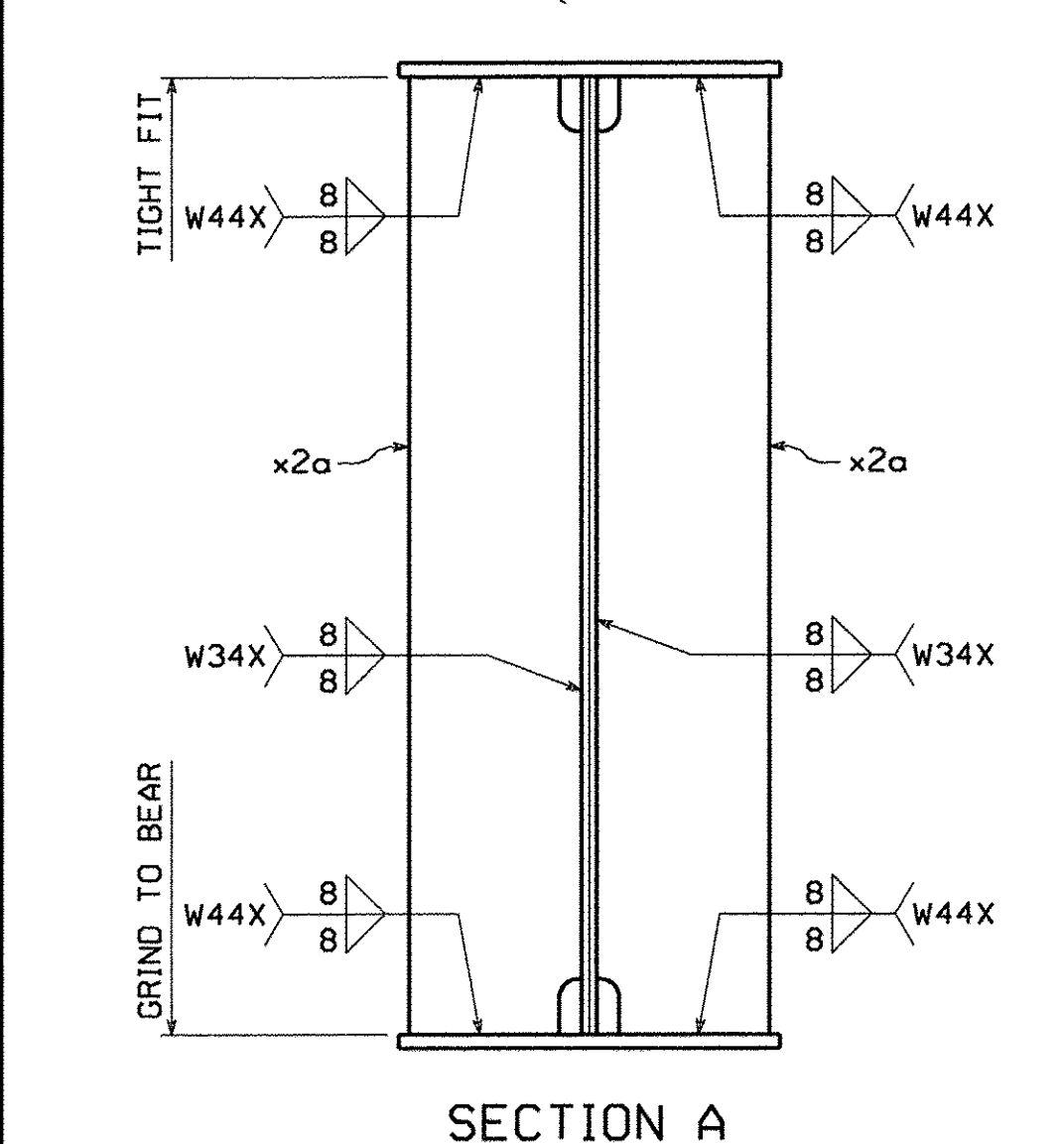
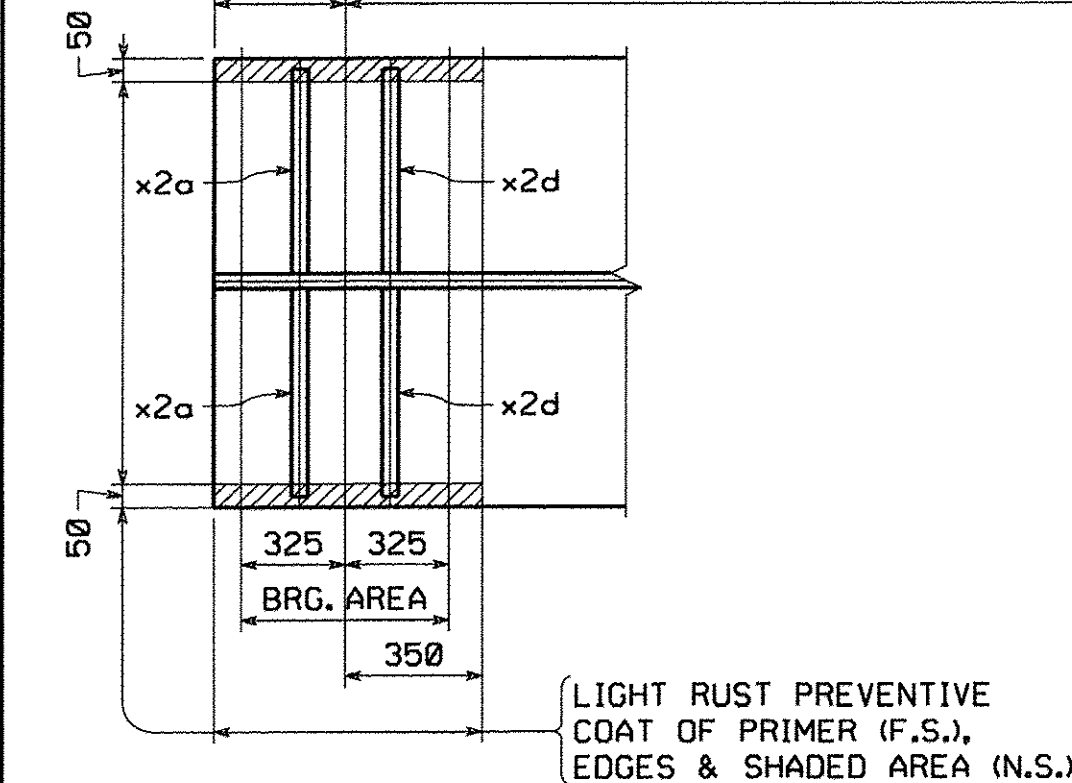
**TVGA CONSULTANTS**

NO EXCEPTIONS TAKEN □ REJECTED  
 □ FURNISH AS CORRECTED  
 □ REVISE AND RESUBMIT  
 ENGINEER has reviewed Shop Drawings and Samples and other data which Contractor is required to submit, only for conformance with the information given in the Contract Documents and compatibility with the design concept of the completed Project as a functioning whole as indicated in the Contract Documents. Such reviews do not extend to means, methods, techniques, sequences or procedures of construction or to safety precautions and programs incident thereto. Contractor is responsible for dimensions to be confirmed and correlated at the job site; for information that pertains solely to the fabrication processes or to techniques of construction; and for coordination of the work of all trades.

BY: *[Signature]*  
 DATE: 11/20/07



**GIRDER MK. G5A**  
 FOR GENERAL SHOP NOTES, SEE DWG. GN1. & GN2.  
 FOR WEB CAMBER DIAGRAM, SEE DWG. WC1.  
 FOR HORIZ. CURVE DIAGRAM, SEE DWG. HC1.



BILL OF MATERIAL												
QTY	MARK	COMM	DESCRIPTION	LENGTH	SPEC	GRADE	TEST	REMARKS	ITEM	GROSS WT	NET WT	
1	G5A		GIRDER							11707.41	23.21	11684.20
1	w1	PL	22 x 2600	13 121	M270M	345W	T		03005	6344.02	23.21	6,320.81
1	t1	PL	28 x 610	13 121	M270M	345W	T		04007	1759.02	0.00	1,759.02
1	b1	PL	40 x 610	13 024	M270M	345W	T		04005	2494.32	0.00	2,494.32
1	x1n	PL	12.7 x 610	615	M270M	345W	FILL		06006	37.40	0.00	37.40
2	x2a	PL	25.4 x 280	2 802	M270M	345W	T		07001	156.41	0.00	156.41
4	x3b	PL	14.3 x 280	2 800	M270M	345W	T		07002	88.00	0.00	88.00
2	x2d	PL	25.4 x 280	2 802	M270M	345W	T		07001	156.41	0.00	156.41
1	x6a	PL	14.3 x 420	420	M270M	345W	BENT		07003	19.80	0.00	19.80
1	x6b	PL	14.3 x 420	420	M270M	345W	BENT		07003	19.80	0.00	19.80
1	x7p	PL	14.3 x 400	429	M270M	345W	BENT		07003	19.26	0.00	19.26
1	x8a	PL	14.3 x 420	421	M270M	345W	BENT		07003	19.85	0.00	19.85
1	x6aa	PL	14.3 x 345	421	M270M	345W	BENT		07003	16.30	0.00	16.30
12	140308-G	HS Bolt	7/8	0'-3 1/2	M164 Type 1			GALV.	17003	0.00	0.00	0.00
8	140308	HS Bolt	7/8	0'-3 1/2	M164 Type 3				17002	0.00	0.00	0.00
12	N14-G	Nut	7/8		M291		DH	GALV.	17005	0.00	0.00	0.00
8	N14	Nut	7/8		M291		DH		17004	0.00	0.00	0.00
12	W14-G	Std Wash	7/8		M293			GALV.	17007	0.00	0.00	0.00
8	W14	Std Wash	7/8		M293 Weathering				17008	0.00	0.00	0.00
<b>TOTAL WEIGHT THIS SHEET:</b>										<b>11 684.20 kgs</b>		
<b>BID ITEM 0160 506.56</b>												

**SHOP NOTE:**  
 [4 @ 3/2]  
 INDICATES LENGTH OF 7/8" H.S. BOLTS  
 INDICATES NUMBER OF 7/8" H.S. BOLTS

NO.	REVISION	BY	CHK'D	DATE
HOLES 15/16" # BOLTS AS NOTED COATING VT ROUTE 279 OVER FURNACE BROOK SEE DWG. GN1 VT ROUTE 279 STA. 8+542.000 TO STA. 8+685.000 CODE(S) 30 TOWN OF BENNINGTON VERMONT, BRIDGE B12 STATE OF VERMONT AGENCY OF TRANSPORTATION SCALE AC NH F019-1(53) FED. AID PROJ. NO. N.T.S. GENERAL CONTRACTOR J.A. McDONALD, INC. HSSI PROJ. MGR DEB KUPRES SHPMT 3 DRAWING MANAGER BRITIGAN (IH) MADE BY MAF CHK'D BY MCK DATE 11/21/07 STATE VT HSSI PROJECT NUMBER S-1070147 HSSI STRUCT. ID A DRAWING NUMBER 5 OF 34				

SHIPMENT 01  
 PAKING: 5082317 FRD: 5082318 SUPPARECT: 5082319  
 BY: Mkretda  
 PLOTTED: 11/20/2007 12:31:59 PM