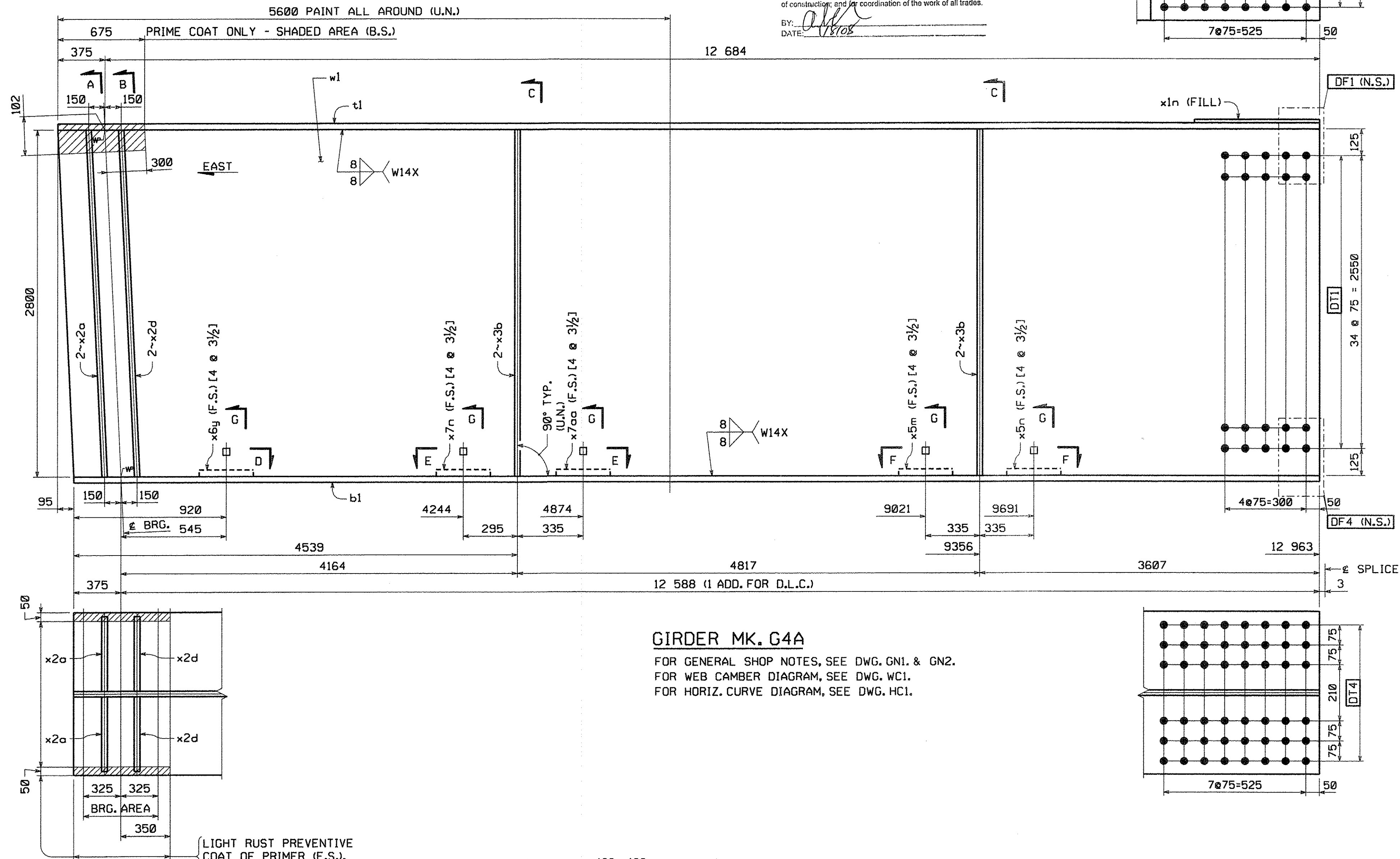


METRIC

TVGA CONSULTANTS

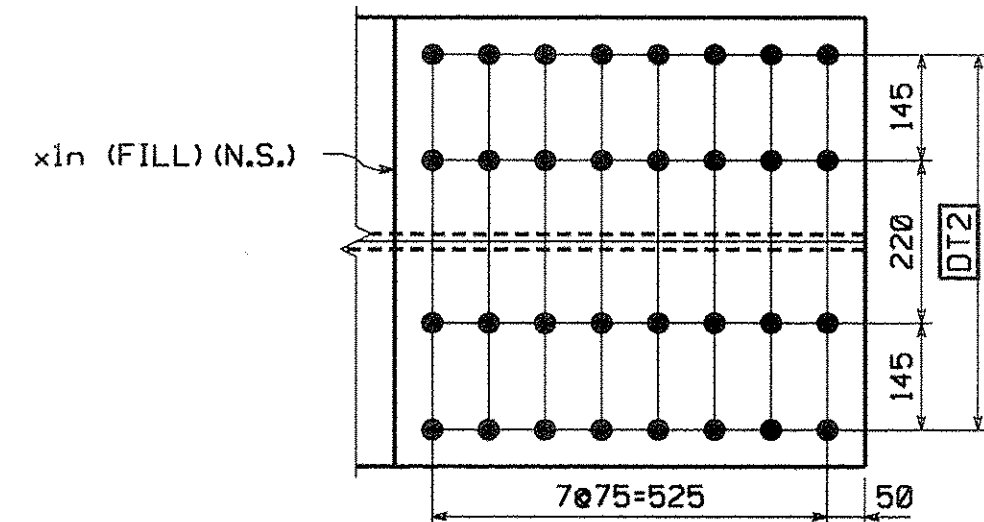
NO EXCEPTIONS TAKEN REJECTED FURNISH AS CORRECTED REVISE AND RESUBMIT ENGINEER has reviewed Shop Drawings and Samples and other data which Contractor is required to submit...

BY: [Signature] DATE: 11/20/07

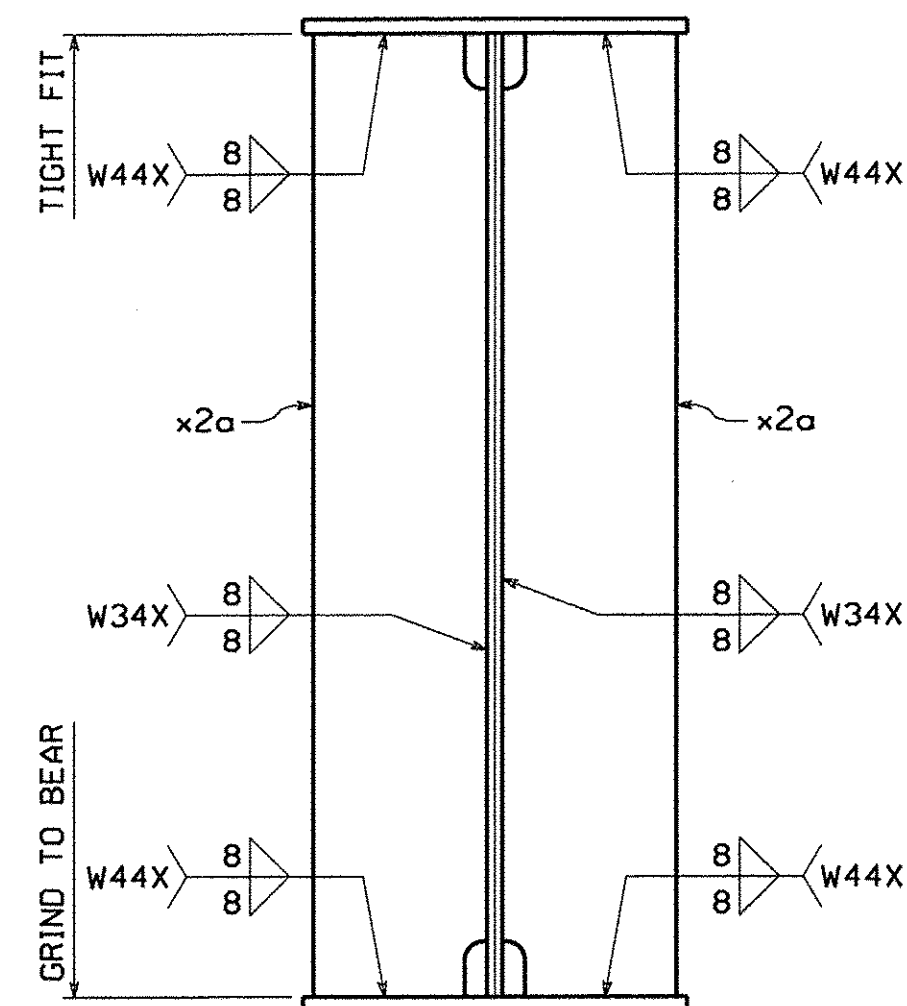


GIRDER MK. G4A

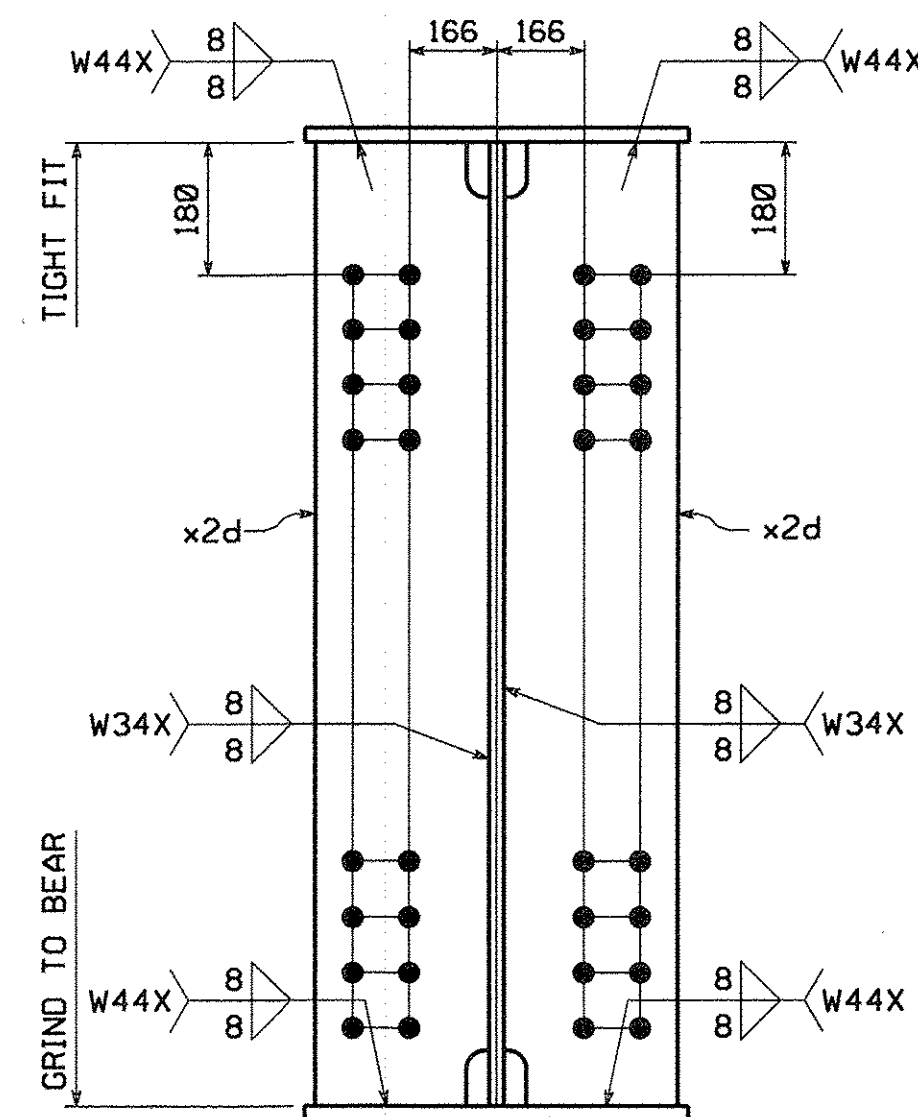
FOR GENERAL SHOP NOTES, SEE DWG. GNI. & GN2. FOR WEB CAMBER DIAGRAM, SEE DWG. WC1. FOR HORIZ. CURVE DIAGRAM, SEE DWG. HC1.



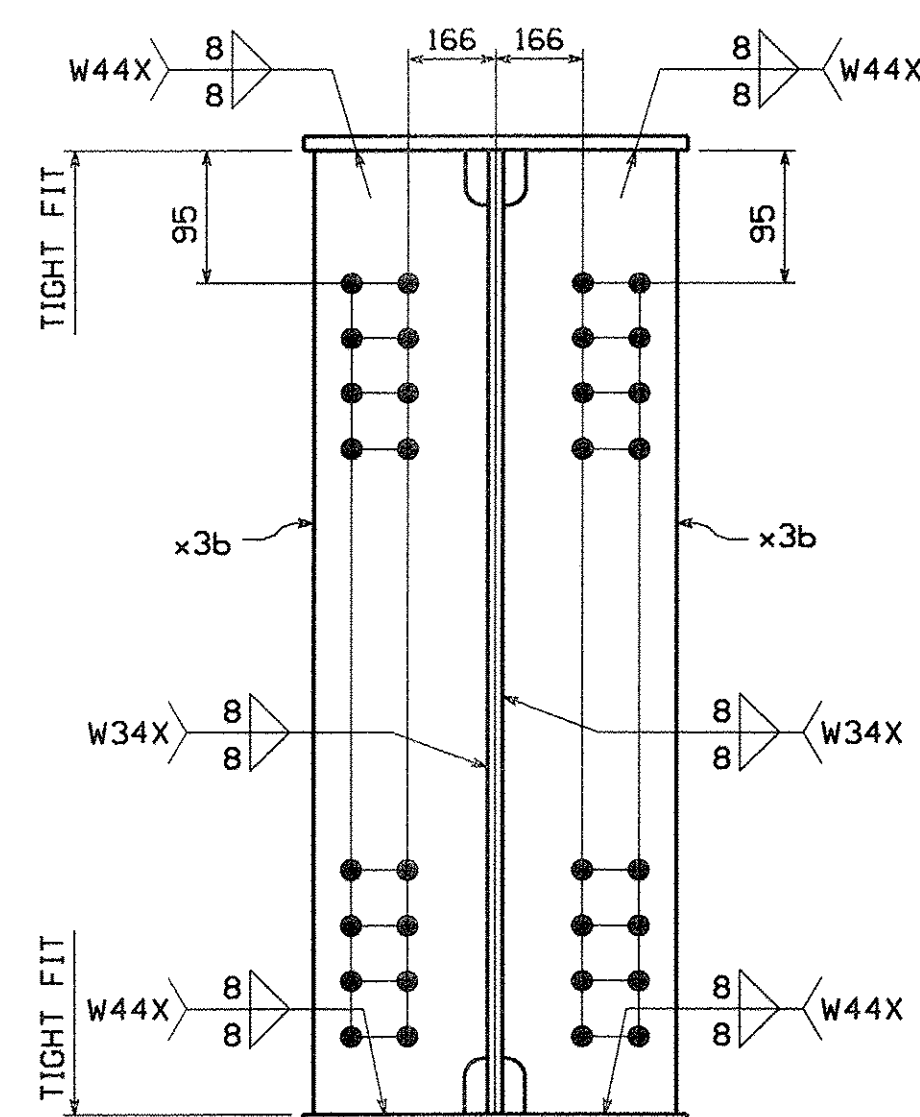
LIGHT RUST PREVENTIVE COAT OF PRIMER (F.S.), EDGES & SHADED AREA (N.S.)



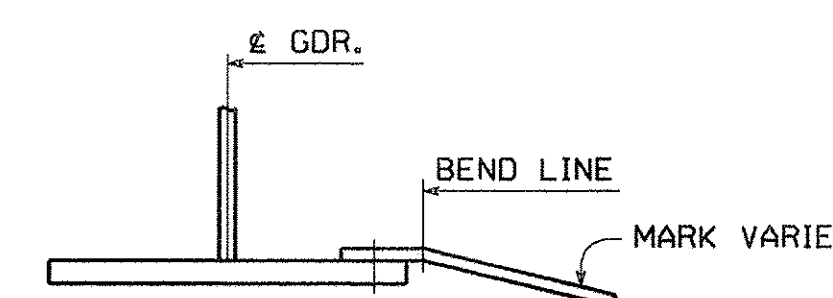
SECTION A



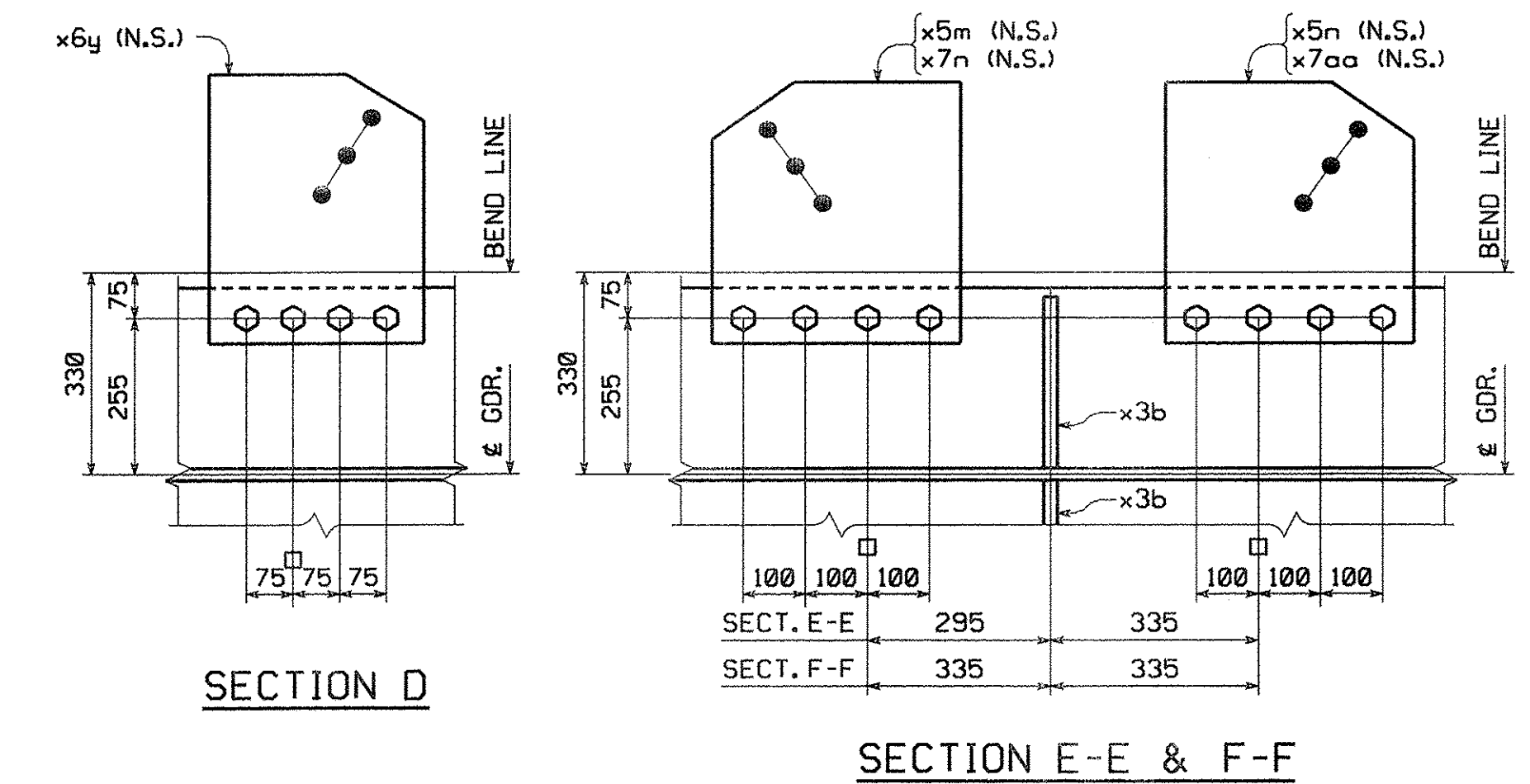
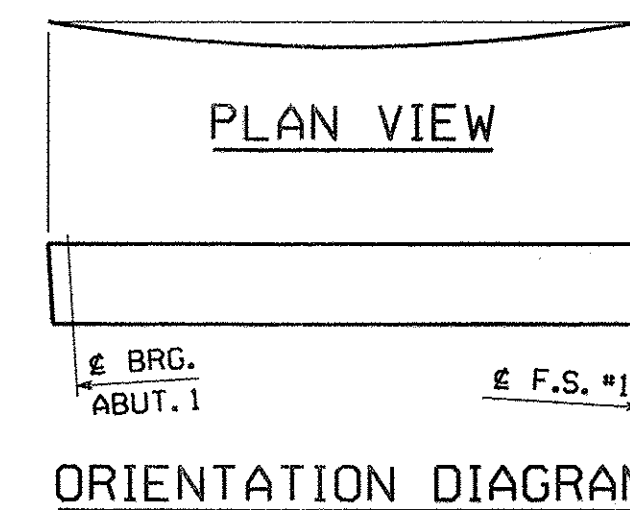
SECTION B



SECTION C



SECTION G



SECTION D

SECTION E-E & F-F

SHOP NOTE:

[4 ø 3/2] INDICATES LENGTH OF 3/8" H.S. BOLTS INDICATES NUMBER OF 7/8" H.S. BOLTS

BILL OF MATERIAL table with columns: QTY EA, MARK, COMB, DESCRIPTION, LENGTH, SPEC, GRADE, TEST, REMARKS, ITEM, GROSS WT EA, NET WT EA. Includes items for G4A, w1, t1, b1, x1n, x2a, x2d, x3b, x5m, x5n, x6y, x7aa, x7n, HS Bolt, Nut, Std Wash, and weathering steel.

TOTAL WEIGHT THIS SHEET: 11 634.74 kgs BID ITEM 0160 506.56

SHIPPING BY: PKG ENG: 508281Z PRD: 508281B SHIP/RECT: 5082819 BY: Mkreidol PLOTTED: 11/20/07 12:31:46 PM