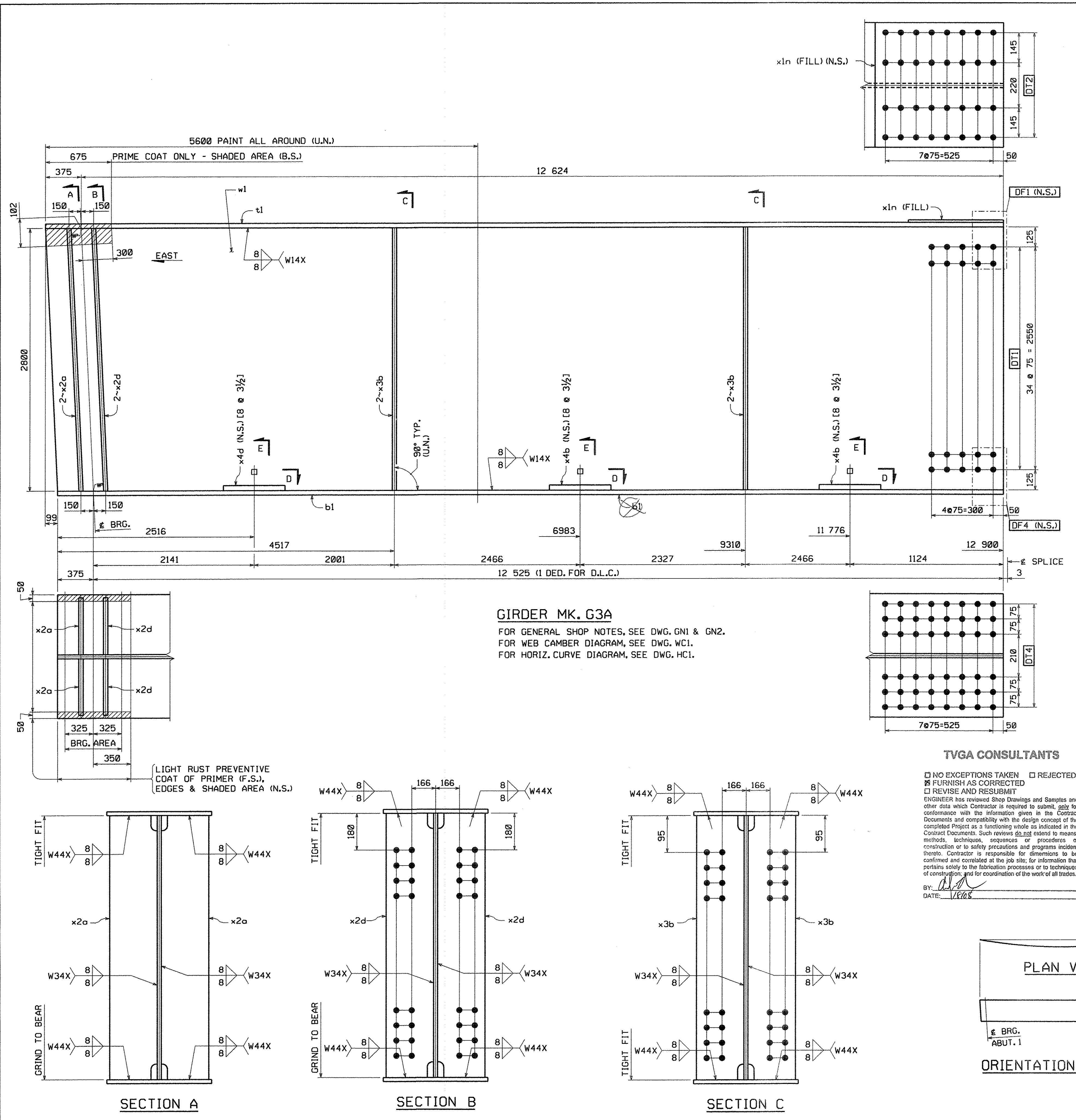


METRIC  
 SHIPMENT 01  
 PK&ENG: 500281Z PRD: 500281B SHIP&RECT: 5002819  
 BY: Mckendel  
 PLOTTER: 11/30/2007 12:30:52 PM



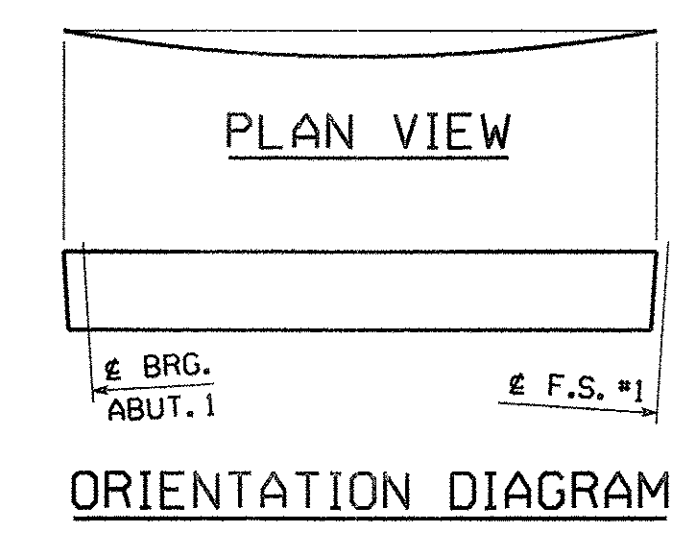
**GIRDER MK. G3A**  
 FOR GENERAL SHOP NOTES, SEE DWG. GNI & GN2.  
 FOR WEB CAMBER DIAGRAM, SEE DWG. WC1.  
 FOR HORIZ. CURVE DIAGRAM, SEE DWG. HC1.

**TVGA CONSULTANTS**

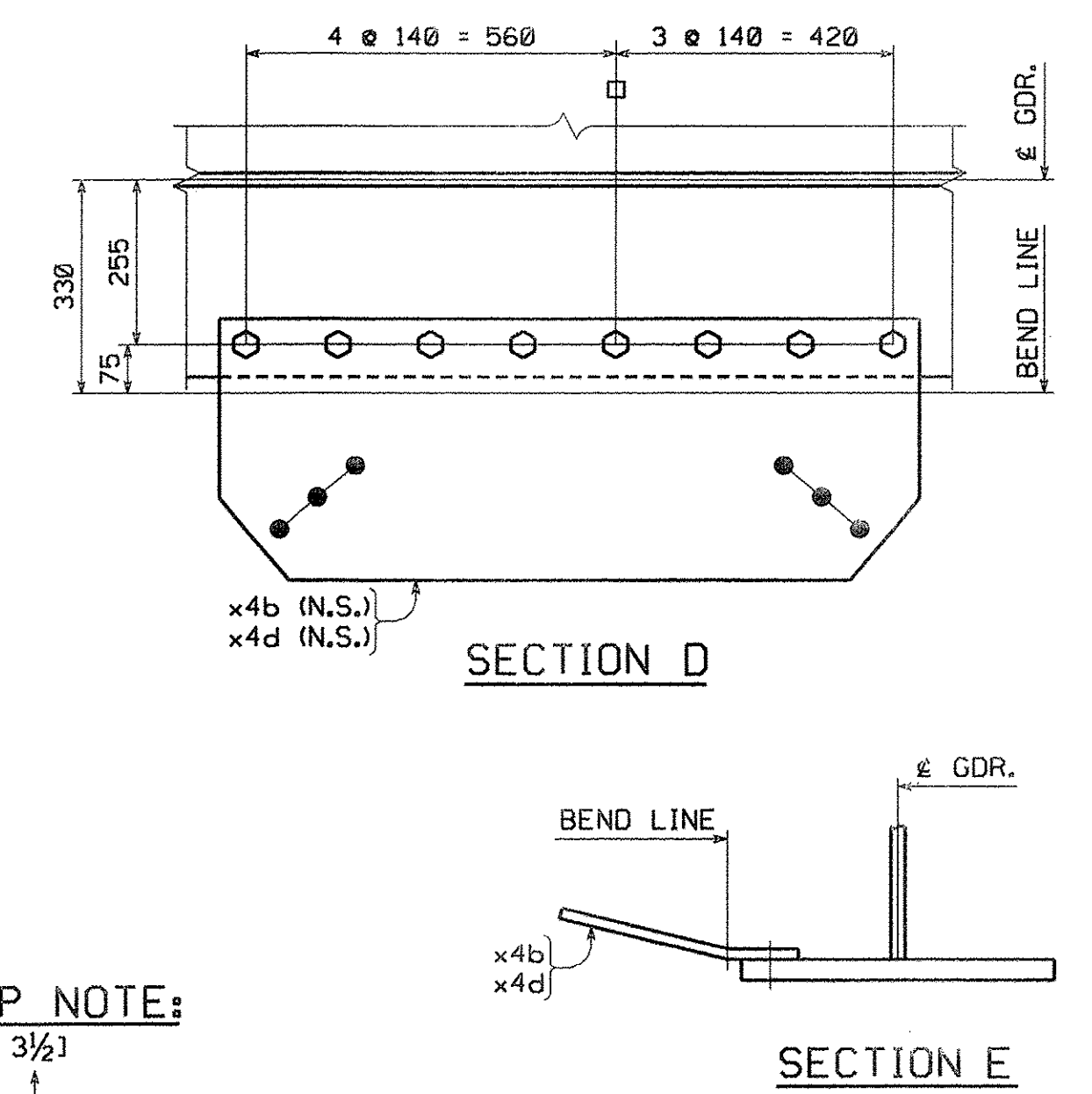
NO EXCEPTIONS TAKEN  
 FURNISH AS CORRECTED  
 REVISE AND RESUBMIT  
 REJECTED

ENGINEER has reviewed Shop Drawings and Samples and other data which Contractor is required to submit, and for conformance with the information given in the Contract Documents and compatibility with the design concept of the completed Project as a functioning whole as indicated in the Contract Documents. Such review does not extend to means, methods, techniques, sequences or procedures of construction or to safety precautions and programs incident thereto. Contractor is responsible for dimensions to be confirmed and correlated at the job site, for information that pertains solely to the fabrication processes or to techniques of construction, and for coordination of the work of all trades.

BY: *[Signature]*  
 DATE: 1/16/08



BILL OF MATERIAL												
QTY EA	MARK	CONM	DESCRIPTION	LENGTH	SPEC	GRADE	TEST	REMARKS	ITEM	GROSS WT EA	DED WT	NET WEIGHT EA
1	G3A		GIRDER							11679.27	23.94	11655.34
1	w1	PL	22 x 2800	12 999	M270M	345W	T		03001	6285.04	23.94	6,261.10
1	t1	PL	28 x 610	12 999	M270M	345W	T		04007	1742.67	0.00	1,742.67
1	b1	PL	40 x 610	12 900	M270M	345W	T		04005	2470.57	0.00	2,470.57
1	x1n	PL	12.7 x 610	615	M270M	345W	FILL		06006	37.40	0.00	37.40
2	x2a	PL	25.4 x 280	2 802	M270M	345W	T		07001	156.41	0.00	156.41
2	x2d	PL	25.4 x 280	2 802	M270M	345W	T		07001	156.41	0.00	156.41
4	x3b	PL	14.3 x 280	2 800	M270M	345W	T		07002	88.00	0.00	88.00
2	x4b	PL	14.3 x 1140	425	M270M	345W	BENT		07003	54.38	0.00	54.38
1	x4d	PL	14.3 x 1140	447	M270M	345W	BENT		07003	57.20	0.00	57.20
8	140308-G	HS Bolt	7/8	0'-3 1/2	M164 Type 1			GALV.	17003	0.00	0.00	0.00
16	140308	HS Bolt	7/8	0'-3 1/2	M164 Type 3				17002	0.00	0.00	0.00
8	N14-G	Nut	7/8		M291		DH	GALV.	17005	0.00	0.00	0.00
16	N14	Nut	7/8		M291		DH3		17004	0.00	0.00	0.00
8	W14-G	Std Wash	7/8		M293			GALV.	17007	0.00	0.00	0.00
16	W14	Std Wash	7/8		M293 Weathering				17006	0.00	0.00	0.00
<b>TOTAL WEIGHT THIS SHEET:</b>										<b>11 655.34 kgs</b>		
<b>BID ITEM 0160 506.56</b>												



**SHOP NOTE:**  
 [8 @ 3 1/2]  
 INDICATES LENGTH OF 7/8" H.S. BOLTS  
 INDICATES NUMBER OF 7/8" H.S. BOLTS

NO.	REVISION	BY	CHK'D	DATE

HOLES $1\frac{1}{16}$ " #		<b>HIGH STEEL STRUCTURES</b> Lancaster Facility 95 Oak Ridge Road Lancaster, PA 17605-0008 Phone (717) 299-5231 Williamsport Facility 3501 W. 4th Street Williamsport, PA 17701 Phone (570) 328-9051 www.hststeel.com
BOLTS AS NOTED	GIRDER G3A	
COATING SEE DWG. GNI	VT ROUTE 279 OVER FURNACE BROOK VT ROUTE 279 STA. 8+542.000 TO STA. 8+685.000 TOWN OF BENNINGTON VERMONT, BRIDGE B12	
CODE(S) 30	STATE OF VERMONT AGENCY OF TRANSPORTATION	
SCALE N.T.S.	AC NH F019-1(53)	FED. AID PROJ. NO. HSI PROJ. MGR DEB KUPRES
SHPMT 3 STATE VT	DRAWING MANAGER BRITIGAN (IH)	MADE BY MAF HSI PROJECT NUMBER S-1070147
	CHK'D BY MCK	DATE 11/21/07
	DRAWING NUMBER A	3 OF 34