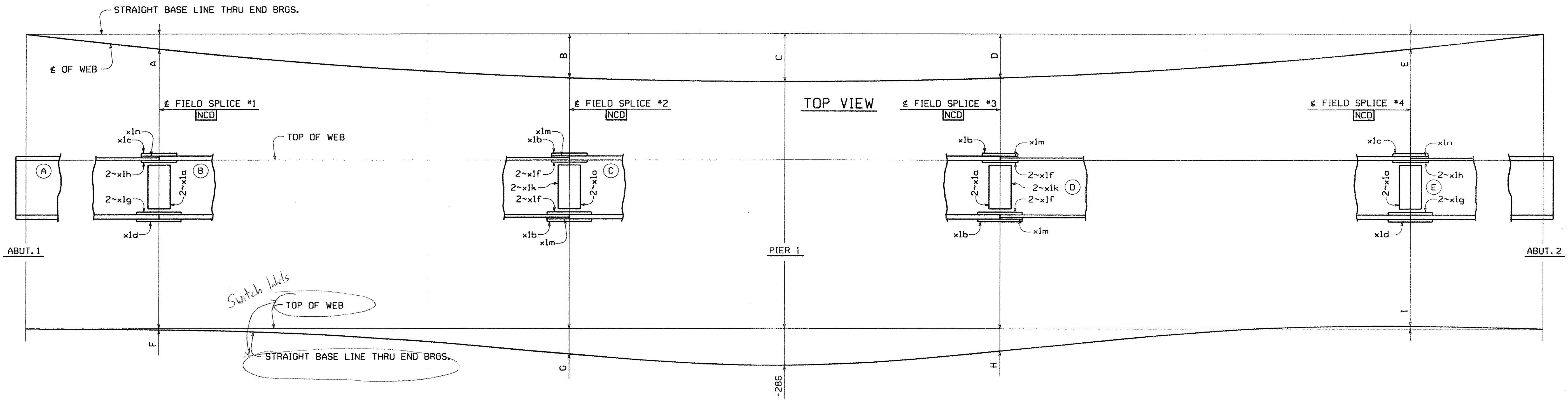


METRIC



LINE ASSEMBLY DIAGRAM

GDR. LINE	A	B	C	D	E	F	G	H	I
G1	-1413	-4030	-4379	-4025	-1397	-10	-197	-174	22
G2	-1420	-4050	-4400	-4045	-1404	-5	-193	-170	28
G3	-1427	-4070	-4422	-4065	-1411	1	-190	-167	33
G4	-1434	-4090	-4444	-4085	-1418	6	-184	-162	39
G5	-1441	-4110	-4465	-4105	-1425	12	-181	-158	44
G6	-1448	-4130	-4487	-4125	-1432	20	-176	-153	52

NOTES:

- MATCH MARKING OF SPLICE PLATES IS NOT REQUIRED.
- FOR GIRDER MARKS, SEE THE ERECTION FRAMING PLAN DRAWINGS.
- HOLES MARKED [NCD] ARE TO BE DRILLED FULL SIZE USING A CNC MACHINING CENTER OR DRILLED FULL SIZE USING DRILL TEMPLATES.
- (A) INDICATES SUFFIX MARK OF SHIPPING PIECE.
- FIELD SPLICE PLATES TO BE SHIPPED WITH THE (B) (D) GIRDERS.
- MINIMUM ONE LINE SET-UP AS REQUIRED BY SHOP INSPECTOR (TYPICALLY FIRST GIRDER LINE FABRICATED WITH SPLICE PLATES ATTACHED AND PINED).
- NEGATIVE CAMBER ORDINATES INDICATE THAT TOP OF WEB IS BELOW BASE LINE.

TVGA CONSULTANTS

NO EXCEPTIONS TAKEN REJECTED
 FURNISH AS CORRECTED
 REVISE AND RESUBMIT
 ENGINEER has reviewed Shop Drawings and Samples and conformance with the information given in the Contract Documents and compatibility with the design concept of the completed Project as a functioning whole as indicated in the Contract Documents. Such reviews do not extend to means, methods, techniques, sequences or procedures of construction or to safety precautions and programs incident thereto. Contractor is responsible for dimensions to be confirmed and correlated at the job site; for information that pertains solely to the fabrication processes or to techniques of construction; and for coordination of the work of all trades.

BY: *[Signature]*
 DATE: 1/18/07

PLOTTED: 11/29/2007 12:43:23 PM
 SUPPLEMENT 01
 BY: MKresold1
 PAPER: 508281Z PRO: 508281B SHIPRECT: 508281B

NO.	REVISION	BY	CHK'D	DATE
SHOP ASSEMBLY DIAGRAM				
VT ROUTE 279 OVER FURNACE BROOK				
VT ROUTE 279 STA. 8+542.000 TO STA. 8+685.000				
TOWN OF BENNINGTON VERMONT, BRIDGE B12				
STATE OF VERMONT				
AGENCY OF TRANSPORTATION				
SCALE	AC NH F019-1(53)	FED. AID PROJ. NO.		
N.T.S.	GENERAL CONTRACTOR J.A. McDONALD, INC.	HSSI PROJ. MGR	DEB KUPRES	
SHPMT	3	DRAWING MANAGER BRITIGAN (IH)	MADE BY ERS	CHK'D BY CS
STATE	VT	HSSI PROJECT NUMBER S-1070147	HSSI STRUCT. ID A	DRAWING NUMBER SA1 OF SA1
DATE 11-15-07				