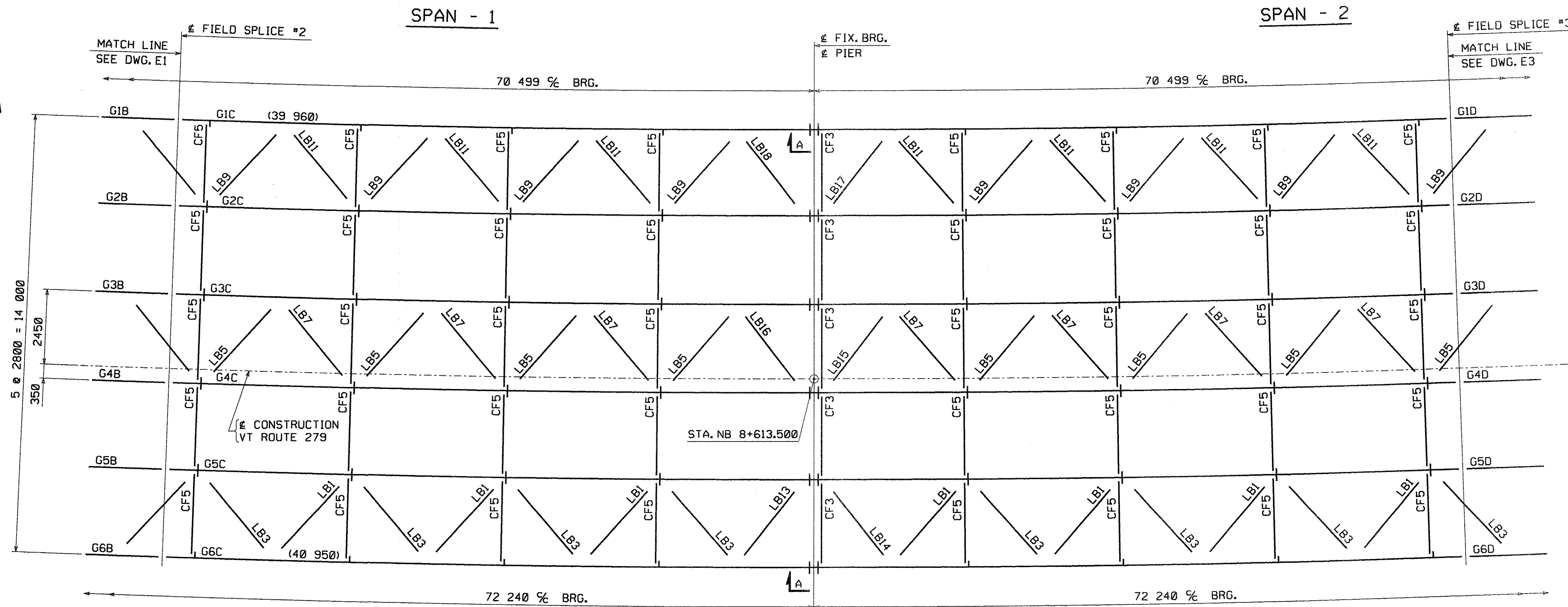


METRIC



ERECTOR FRAMING PLAN

LIST OF FIELD CONNECTIONS

LINE	ACTUAL NUMBER REQ'D	BOLT DIAM.	BOLT LENGTH	BOLTS PER CONN.	NO. OF CONN.	GRIP	THICKNESS OF PIECES JOINED			PIECES CONNECTED AND REMARKS		
1	4200	7/8	3 1/2	350	12	53.8	15.9	22.0	15.9	WEB SPL @ FS1 G1-G6; FS4 G1-G6		
2	4200	7/8	3 1/2	350	12	57.7	15.9	26.0	15.9	WEB SPL @ FS2 G1-G6; FS3 G1-G6		
3	768	7/8	4 1/2	64	12	81.3	20.6	40.0	20.6	TOP FLG SPL @ FS1 G1-G6; FS4 G1-G6		
4	1440	7/8	5 1/4	120	12	96.3	20.6	55.0	20.6	TOP FLG SPL @ FS2 G1-G6; FS3 G1-G6		
5	1152	7/8	4 1/2	96	12	81.3	20.6	40.0	20.6	BOT FLG SPL @ FS1 G1-G6; FS4 G1-G6		
6	1410	7/8	5 1/4	120	12	96.3	20.6	55.0	20.6	BOT FLG SPL @ FS2 G1-G6; FS3 G1-G6		
7	30	7/8	6	5	6	115.5	14.3	20.6	55.0	20.6	5.0	SPLICE PL. W/ LAT. BRACING BT. GUSSET PL. (2 WASHERS REQ'D)
8	990	7/8	2 1/2	3	330	32.0	12.7	14.3	5.0	LAT. BRACING TO BT. GUSS. PL. (2 WASHERS REQ'D)		
9	160	7/8	3	16	10	39.7	25.4	14.3		PIER BRG STIFF. TO GUSS. PL.		
10	2880	7/8	2 1/2	16	180	28.6	14.3	14.3		INT. STIFF. TO GUSS. PL.		
11	1280	7/8	2 1/2	16	80	30.2	15.9	14.3		INT. STIFF. TO GUSS. PL. "C" GDRS		

LIST OF FIELD CONNECTIONS

LINE	ACTUAL NUMBER REQ'D	BOLT DIAM.	BOLT LENGTH	BOLTS PER CONN.	NO. OF CONN.	GRIP	THICKNESS OF PIECES JOINED			PIECES CONNECTED AND REMARKS
1	90	7/8	2 1/2	3	30	32.0	12.7	14.3	5.0	LAT. BRACING TO BT. GUSS. PL. (2 WASHERS REQ'D) (TYPE 1)
2	320	7/8	3	16	20	39.7	25.4	14.3		END BRG STIFF. TO GUSS. PL. (TYPE 1)
3	320	7/8	2 1/2	16	20	28.6	14.3	14.3		INT. STIFF. TO GUSS. PL. (TYPE 1)

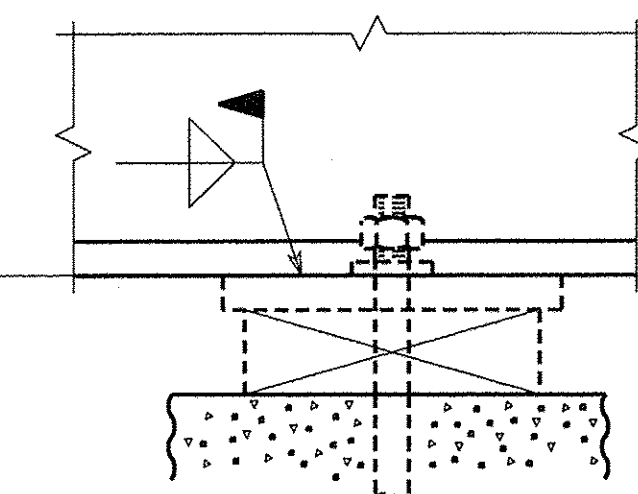
FIELD BOLT SUMMARY - SHIP. #3	
(2% ADDITIONAL BOLTS ADDED + 3 EA. FOR TESTING)	
AASHTO M164 TYPE 1 (RCT); HWY HEX HD; GALV. TO AASHTO M298 CLASS 50	
329	- 7/8" HIGH STRENGTH BOLTS x 0'-3
421	- 7/8" HIGH STRENGTH BOLTS x 0'-2 1/2
AASHTO M164 TYPE 3 (RCT); HWY HEX HD	
35	- 7/8" HIGH STRENGTH BOLTS x 0'-6
2,910	- 7/8" HIGH STRENGTH BOLTS x 0'-5 1/4
1,961	- 7/8" HIGH STRENGTH BOLTS x 0'-4 1/2
8,571	- 7/8" HIGH STRENGTH BOLTS x 0'-3 1/2
166	- 7/8" HIGH STRENGTH BOLTS x 0'-3
5,256	- 7/8" HIGH STRENGTH BOLTS x 0'-2 1/2
AASHTO M291 GRADE DH (RCT); HWY HEX; GALV. TO AASHTO M298 CLASS 50	
750	- NUTS FOR 7/8" BOLT
AASHTO M291 GRADE DH-3 (RCT); HWY HEX	
18,899	- NUTS FOR 7/8" BOLT
AASHTO M293 (RCT); ROUND & FLAT; GALV. TO AASHTO M298 CLASS 50	
842	- STD WASHERS FOR 7/8" BOLT
AASHTO M293 WEATHERING (RCT); ROUND & FLAT	
19,939	- STD WASHERS FOR 7/8" BOLT

NOTES:
WORK THIS DRAWING WITH DRAWINGS E1, E3 AND E4.

CONTRACTOR NOTE:

ELEVATIONS ARE GIVEN TO BOTTOM OF STEEL - DO NOT POUR TO FINAL ELEVATIONS WITHOUT VERIFICATION OF BEARING HEIGHTS AND BRIDGE SEATS.

BOTTOM OF STEEL FOR ELEV., SEE PLAN



SECTION A

LINE	PIER	ELEVATIONS
G1	250.630	
G2	250.849	
G3	251.067	
G4	251.285	
G5	251.504	
G6	251.722	

TVGA CONSULTANTS

NO EXCEPTIONS TAKEN
FURNISH AS CORRECTED
REVISE AND RESUBMIT
ENGINEER has reviewed Shop Drawings and Samples and other data which Contractor is required to submit, only for conformance with the information given in the Contract Documents and compatibility with the design concept of the completed Project as a functioning whole as indicated in the Contract Documents. Such reviews do not extend to means, methods, techniques, sequences or procedures of construction or to safety precautions and programs incident thereto. Contractor is responsible for dimensions to be confirmed and controlled at the job site, for information that pertains solely to the fabrication processes or to techniques of construction, and for coordination of the work of all trades.

BY: *[Signature]*
DATE: 1/17/08

NO.	REVISION	BY	CHK'D	DATE

HOLES				
BOLTS				
COATING				
CODE(S)				
SCALE				
N.T.S.				
DRAWING MANAGER	BRITIGAN (IH)	MADE BY	MAF	CHK'D BY
GENERAL CONTRACTOR	J.A. McDONALD, INC.	HSS/ PROJ. MGR		DEB KUPRES
STATE	VT	HSS/ PROJECT NUMBER	S-1070147	DRAWING NUMBER
		HSS/ STRUCT. ID	A	E2 OF E5

BY: Mkr(s)del
SHIPMENT 01
PMD: 5/20/2007
SHIP/PROJECT: 5/20/2007
PLOTTED: 11/20/2007 12:42:56 PM