

METRIC

Scale = 0.012000 of full size.

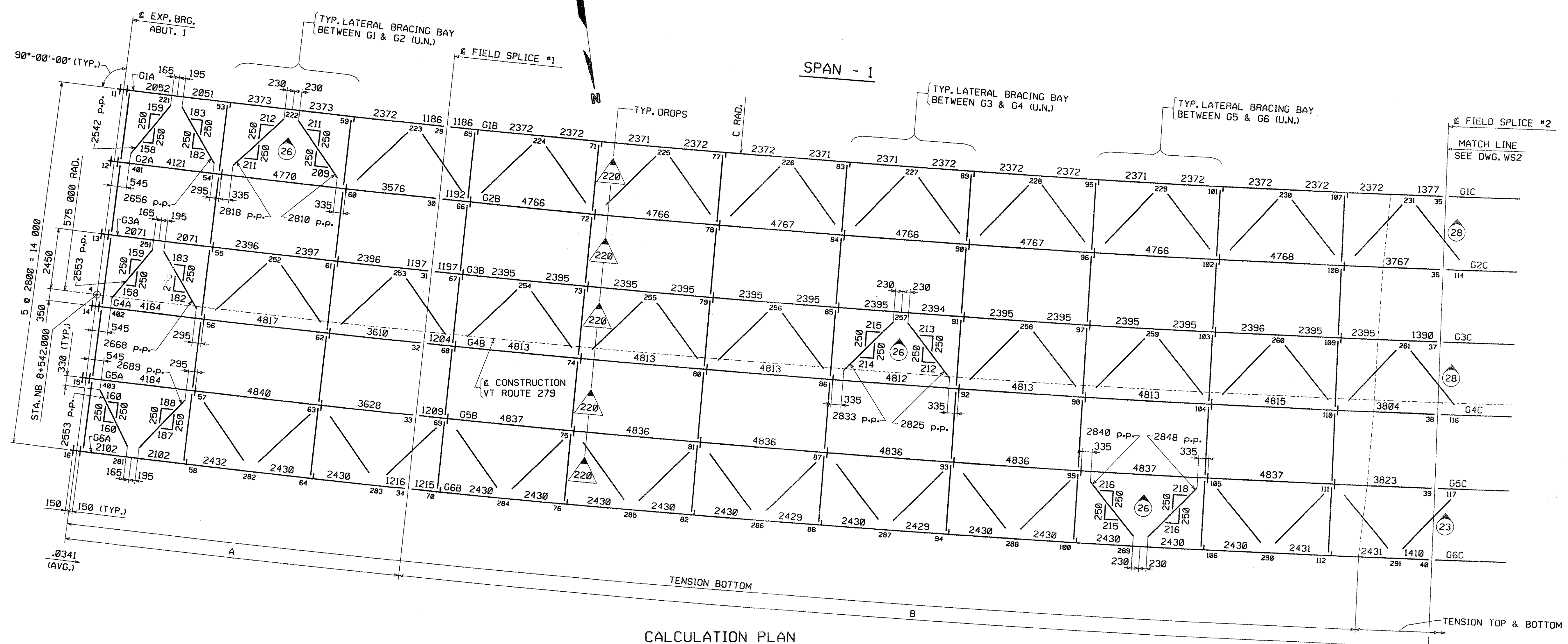
PM&ENG: 5002817 PRD: 5002818 SHIP&RECT: 5002819

SHIPMENT 01

BY: MCR/racl

PLOTTED: 11/30/2007 12:43:38 PM

60



CALCULATION PLAN

TVGA CONSULTANTS

NO EXCEPTIONS TAKEN  REJECTED  
 PURVISH AS CORRECTED   
 REVISE AND RESUBMIT  
 ENGINEER has reviewed Shop Drawings and Samples and other data which Contractor is required to submit, only for conformance with the information given in the Contract Documents and conformance with the design concept of the complete Project as a functioning whole as indicated in the Contract Documents. Such review shall extend to incidents, methods, techniques, sequence or procedures of construction or to safety precautions and programs incident thereto. Contractor is responsible for dimensions to be controlled and controlled as the job dies for information that returns solely to the fabricator, precision or to techniques of construction, and for coordination of the work of all trades.

BY: *[Signature]*  
 DATE: 1/5/08

NOTES:

- DIMENSIONS ON PLAN ALONG GIRDERS ARE GIVEN TO THE CHORD AT THE BOTTOM OF WEB IN FULLY CAMBERED POSITION. ALL OTHER DIMENSIONS ARE GIVEN HORIZONTALLY.
- DIMENSIONS PLACED ON THE GIRDER LINES REPRESENT CROSSFRAME SPACING. FIGURES GIVEN THUS:  $\frac{0.341}{A}$  ARE THE GRADES OF THE GIRDERS AT THE BEARINGS IN FINAL POSITION; ARROW POINTS DOWNGRADE.
- ALL STIFFENER AND CONNECTION PLATE SPACINGS ARE GIVEN TO  $\frac{1}{2}$  PLATE. ENDS OF GIRDERS AND ALL BEARING STIFFENERS TO BE VERTICAL IN FINAL POSITION.
- ALL STEEL TO BE AASHTO M270M GRADE 345W (U.N.).
- "C" GIRDER WEB AND FLANGE PLATES TO BE AASHTO M270M GRADE HPS485W.
- ALL FIELD CONNECTIONS IN UNPAINTED AREAS TO BE MADE WITH  $\frac{3}{8}$ " H.S. (AASHTO M164 TYPE 3) BOLTS IN  $\frac{1}{16}$ " HOLES (U.N.).
- ALL FIELD CONNECTIONS IN PAINTED AREAS TO BE MADE WITH  $\frac{3}{8}$ " H.S. (AASHTO M164 TYPE 1, GALV.) BOLTS IN  $\frac{1}{16}$ " HOLES (U.N.).
- FIGURES GIVEN THUS:  $\frac{220}{\Delta}$  ARE THE DIFFERENCES IN ELEVATIONS OF GIRDERS (IN THE PLANE OF THE CROSSFRAME IN ERECTED POSITION) AT CROSSFRAMES; ARROW POINTS TOWARD LOW GIRDER.
- FIGURES GIVEN THUS:  $\frac{26}{\nabla}$  ARE THE BEVELS FOR LATERAL BRACING; ARROW POINTS TOWARD LOW END.
- FOR TYPICAL DETAIL LAYOUTS, SEE DRAWINGS PREFIXED "TD".
- ALL STATIONS ARE GIVEN IN METERS.

**\*\*NOTE\*\***  
 THE PURPOSE OF THIS DRAWING IS TO COORDINATE GEOMETRIC CONTROL INFORMATION. THIS DRAWING IS SUBMITTED FOR INFORMATION ONLY AND IS NOT INTENDED FOR SHOP FABRICATION. THIS DRAWING IS FOR REFERENCE ONLY. APPROVAL IS NOT REQUIRED.

LINE	A	B	C
G1	12 407	38 139	566 950
G2	12 467	38 325	569 750
G3	12 528	38 512	572 550
G4	12 591	38 700	575 350
G5	12 652	38 887	578 150
G6	12 712	39 075	580 950

NO.	REVISION	BY	CHK'D	DATE

HOLES			
BOLTS	<b>HIGH STEEL STRUCTURES</b> <small>An ISO 9001:2000 Certified Company An Affiliate of High Industries Inc. www.highsteel.com</small>		
COATING	WORKSHEET - CALCULATION PLAN VT ROUTE 279 OVER FURNACE BROOK VT ROUTE 279 STA. 8+542.000 TO STA. 8+685.000 TOWN OF BENNINGTON VERMONT, BRIDGE B12		
CODE(S)	STATE OF VERMONT AGENCY OF TRANSPORTATION		
SCALE	AC NH F019-1(53)	FED. AID PROJ. NO.	
N.T.S.			
GENERAL CONTRACTOR	J.A. McDONALD, INC.	HSSI PROJ. MGR	DEB KUPRES
SHIPMT	3	DRAWING MANAGER	BRITIGAN (IH)
STATE	VT	HSSI PROJECT NUMBER	S-1070147
		HSSI STRUCT. ID	A
		DRAWING NUMBER	WS1 OF WS3
		MADE BY	WBW
		CHK'D BY	CS
		DATE	11-14-07