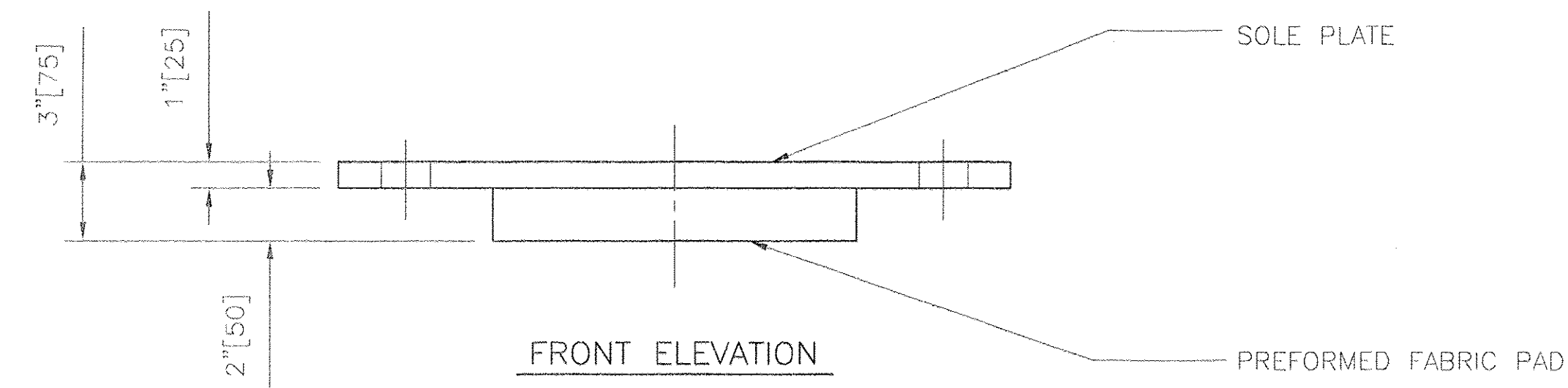


PLAN VIEW

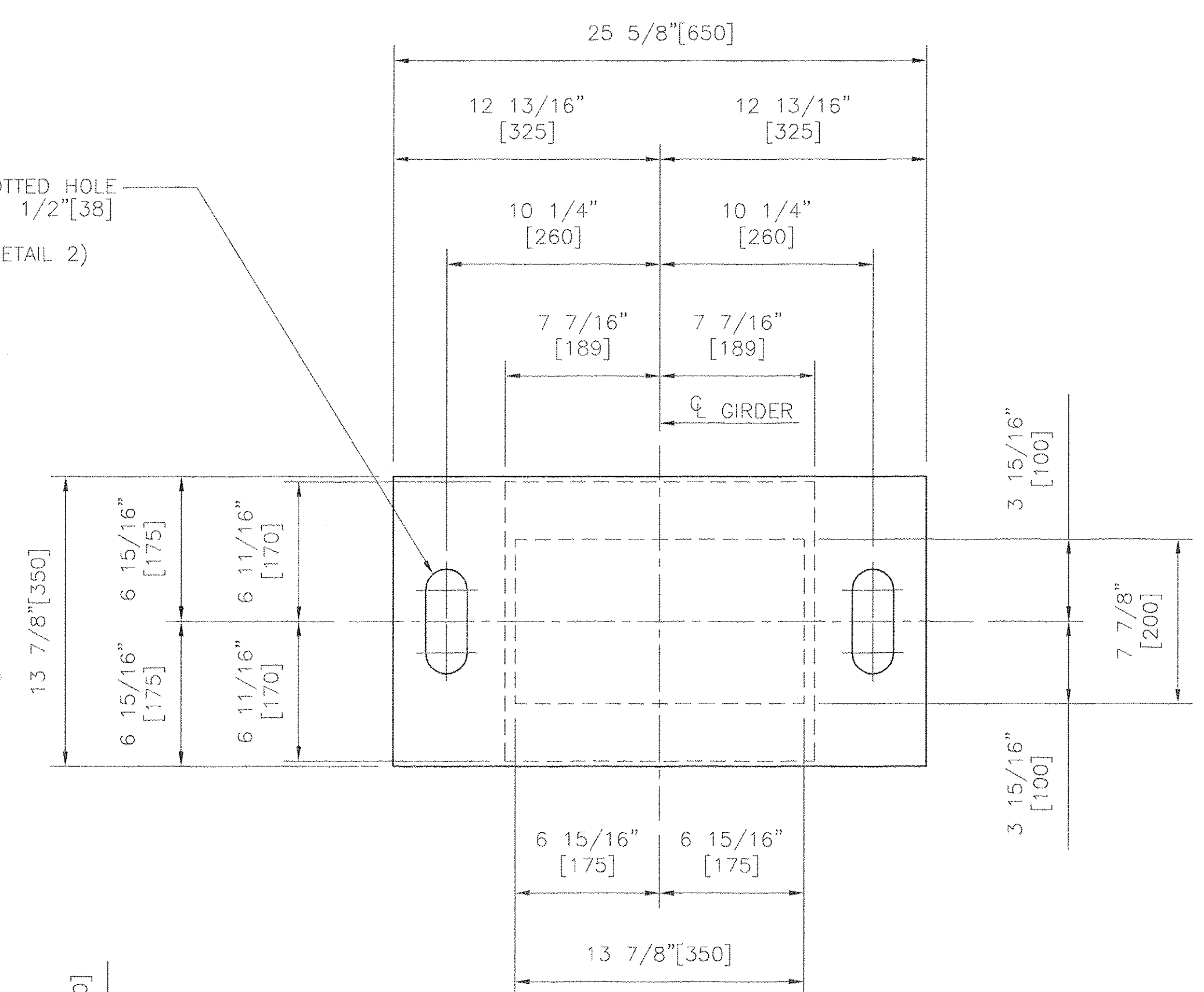


FRONT ELEVATION

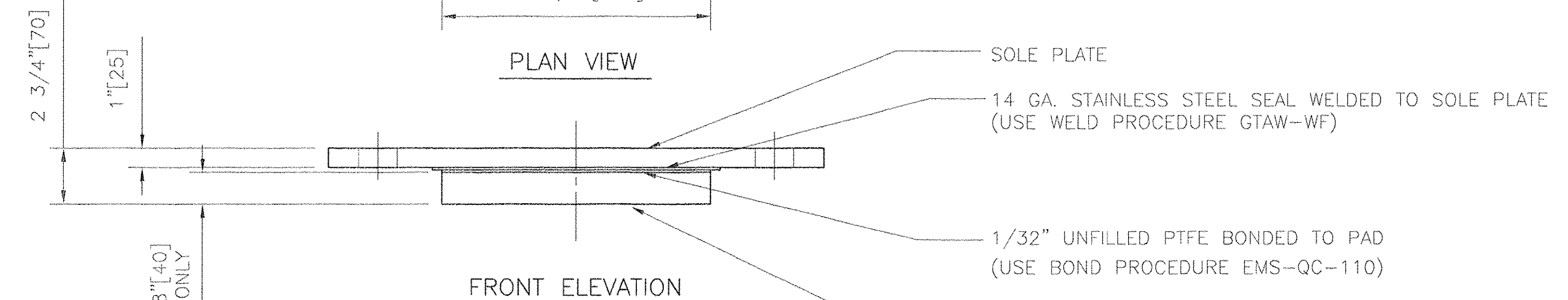
COSMEC FIXED PREFORMED FABRIC PAD BEARING AT ABUTMENT 1

QUANTITY - 2
 TOTAL VERTICAL CAPACITY - 90 KIPS[400kN]
 TOTAL TRANSVERSE CAPACITY - 9 KIPS[40kN]
 TOTAL LONGITUDINAL CAPACITY - 13.7 KIPS[61kN]
 ROTATION CAPACITY - 0.02 RADIAN

2"[50] x 5"[125] SLOTTED HOLE IN SOLE PLATE FOR 1 1/2"[38] DIA. ANCHOR BOLT (SEE ANCHOR BOLT DETAIL 2)



PLAN VIEW



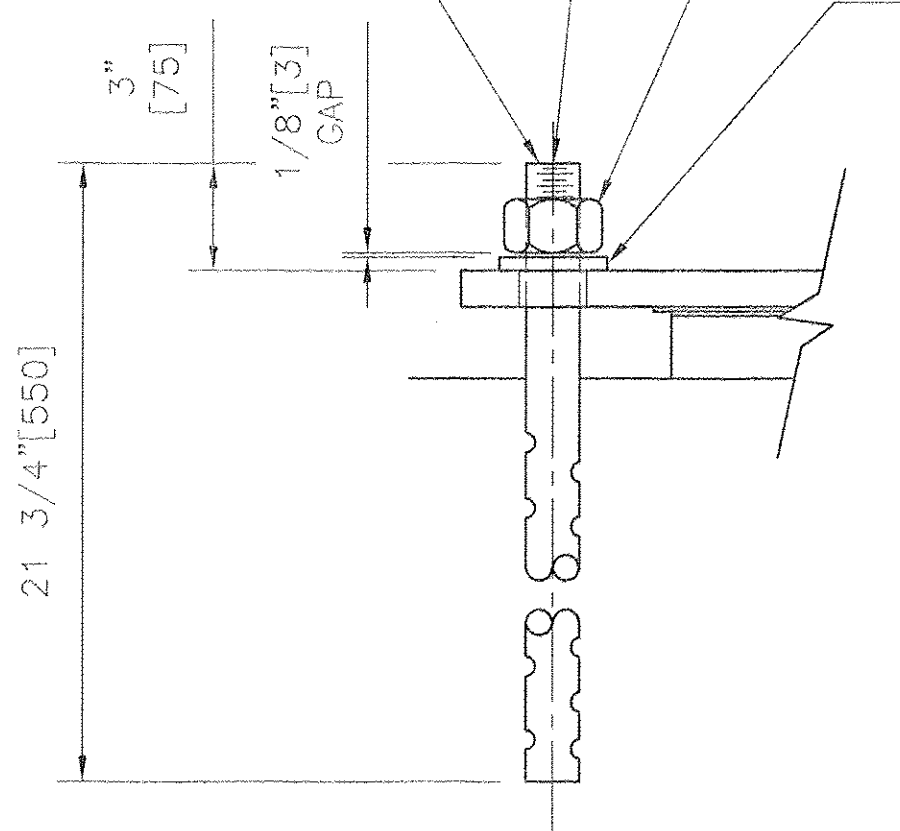
FRONT ELEVATION

COSMEC EXPANSION PREFORMED FABRIC PAD BEARING AT ABUTMENT 2

QUANTITY - 2
 TOTAL VERTICAL CAPACITY - 71 KIPS[316kN]
 TOTAL TRANSVERSE CAPACITY - N/A
 TOTAL LONGITUDINAL CAPACITY - N/A
 ROTATION CAPACITY - 0.02 RADIAN

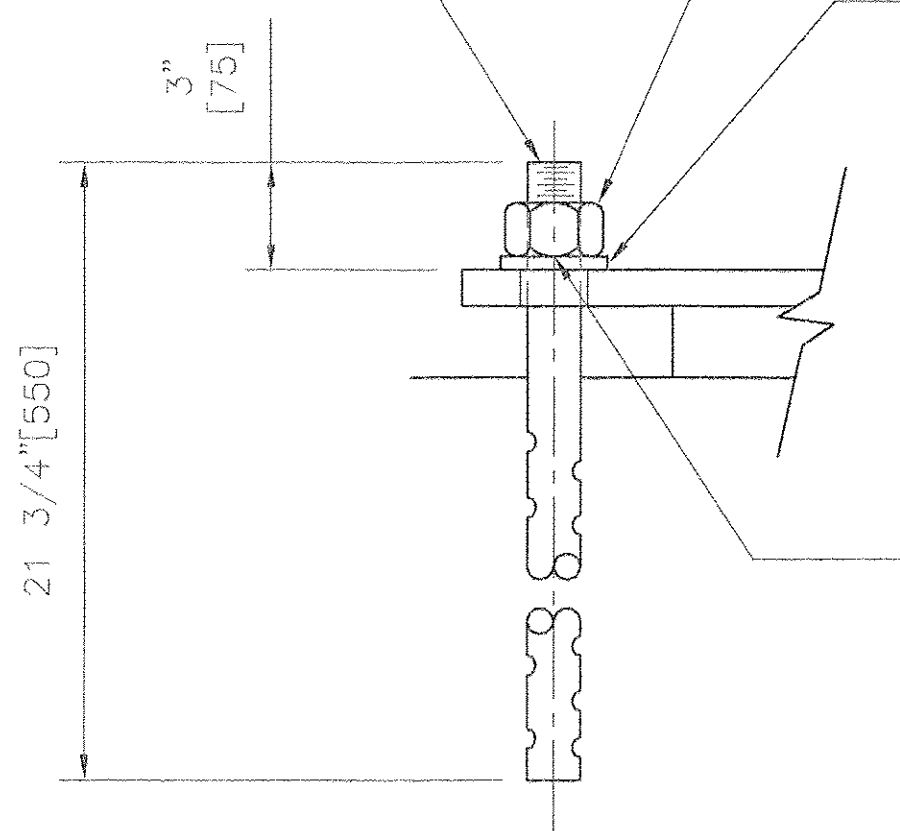
BURR THREADS TO PREVENT REMOVAL OF NUT

1 1/2"[38] DIA. x 21 3/4"[550] LONG ASTM A.449 SWEDGED AND GALVANIZED ANCHOR BOLT WITH 4"[100] THREADED ONE END



ANCHOR BOLT DETAIL 2

1 1/2"[38] DIA. x 21 3/4"[550] LONG ASTM A.449 SWEDGED AND GALVANIZED ANCHOR BOLT WITH 4"[100] THREADED ONE END



ANCHOR BOLT DETAIL 1

BEARING NOTES:

- ANCHOR BOLTS AND ASSOCIATED HARDWARE SHALL BE GALVANIZED IN ACCORDANCE WITH ASTM A153 OR A123 AS APPLICABLE.
- COSMEC, INC. REPRESENTATIVE: MR. MATT McANDREWS (508)668-6600
- ALL EDGES OF STEEL PLATES SHALL HAVE A 1/16"[1.6] MINIMUM RADIUS.
- ALL BEARING DEVICES SHALL BE ZINC METALLIZED AS PER SUBSECTION 531.04(b) AND 506.15(b). BEARINGS SHALL BE SEALED WITH AN APPROVED SEALER AS SPECIFIED IN STANDARD SPECIFICATION SUBSECTION 506.15(b). AREAS OF METALLIZING DAMAGED BY FIELD WELDING OR HANDLING SHALL BE PAINTED WITH AN APPROVED SEALANT. 6 MILS. MIN. EXTERIOR SURFACES.
- BEARINGS SHALL BE MARKED FOR IDENTIFICATION WITH LOCATION AND SHALL BE WRAPPED FOR PROTECTION DURING TRANSIT AND STORAGE.

NO. OF DRAWINGS AND REVISIONS	DATE
NO. OF REVISIONS TAKEN	2/28/08
DESIGNED BY	
CHECKED BY	
DATE	
APPROVED BY	
DATE	

BEARING MATERIALS:

- STEEL - ASTM A.709 GR.345 (GR.50) AND SHALL BE ZINC METALLIZED
- STAINLESS STEEL - ASTM A.240 TYPE 304 WITH A #8 MIRROR FINISH
- PTFE - ASTM D.4894 VIRGIN UNFILLED
- △ PREFORMED FABRIC PAD - VTRANS STANDARD SPECIFICATION FOR CONSTRUCTION, SECTION 731.01
- ANCHOR BOLTS AND HARDWARE - SEE DETAILS

STATE OF VERMONT
 AGENCY OF TRANSPORTATION

SHARED USE PATH OVER
 VT ROUTE 279
 TOWN OF BENNINGTON
 BRIDGE NO. 11
 PROJECT NO. AC NH 019-1(53)

COSMEC, INC. 70 SOUTH STREET WALPOLE, MA. 02081

SCALE: 3/16"=1"	DRAWN BY: MCM	CHECKED BY: MM
DATE: 1/7/08	DATE: 1/7/08	DATE: 1/10/08

COSMEC BEARINGS

REV.	DESCRIPTION	BY	DATE	CHK'D	DATE	CUSTOMER	S.O. NUMBER	DRAWING NUMBER	REV.
1	REVISED PREFORMED PAD MATERIAL SPECIFICATION	MCM	2/14/08	MCM	2/14/08	J. A. McDONALD, INC.	60775	5328	1

RECEIVED
 MAR 03 2008
 G.P.O.